

AS-BUILT IMPACT PLATE KEYMAP

I-95 ETL NORTHBOUND EXTENSION
 PHASE II
 ECCLESTON MITIGATION SITE
 BALTIMORE COUNTY, MARYLAND



**MARYLAND
 TRANSPORTATION AUTHORITY**

CONTRACT NO.: KH-3038

SCALE: 1" = 400'

DATE: NOVEMBER 2023

ECCLESTON WETLAND IMPACT SUMMARY TABLE

November 2023

Impact Plate Number	Resource ID	Temporary Nontidal Wetland Impacts				Temp. Wetland Buffer Impacts
		PEM	PSS	PUB	PFO	
		SF	SF	SF	SF	SF
Plate 3	WET 04	15,461	0	0	18,835	3,805
	WET 05	0	0	0	0	1,044
	WET 06	0	0	0	265	557
Plate 4	WET 05	1,407	0	0	0	2,378
	WET 06	25,355	0	0	3,341	17,571
Plate 5	WET 02	1,614	0	0	0	4,740
	WET 02A	179	0	0	0	2,445
	WET 03	518	0	0	0	5,316
	WET 06	5,142	0	0	0	11,974
Plate 6	WET 01	5,944	0	0	16,535	19,225
	WET01A	0	0	0	216	
	WET 02	1,385	0	0	6,558	5,220
	WET 11	0	0	0	0	237
	WET 12	4,351	0	0	0	12,032
Plate 7	WET 01	11,077	6,012	0	7,112	17,054
Plate 9	WET 09	1,026	0	0	997	13,166
Plate 10	WET 09	0	0	0	0	12,503
Plate 11	WET 01	646	247	0	0	2,930
	WET 09	0	0	0	0	5,458
	WET 20	1,728	0	0	0	7,352
	WET 21	0	0	0	0	1,104
Plate 12	WET 01	0	0	0	0	166
	WET 02	0	0	0	2,284	6,036
	WET 11	740	0	0	0	4,611
	WET 21	1,374	0	0	0	6,387
	WET 22	4,327	0	0	0	12,264
Plate 13	WET 07	0	0	0	0	470
	WET 09	0	0	0	0	54
	WET 10	0	0	5,236	0	9,565
Plate 14	WET 22	36	0	0	0	1,505
Total		82,310	6,259	5,236	56,143	187,169

ECCLESTON WATERWAY IMPACT SUMMARY TABLE

November 2023

Impact Plate Number	Resource ID	Permanent WUS Impacts				Temporary WUS Impacts				Temporary Floodplain Impacts
		Perennial		Intermittent		Perennial		Intermittent		
		LF	SF	LF	SF	LF	SF	LF	SF	SF
Plate 1	WUS 04	543	6,963	0	0	0	0	0	0	10,377
Plate 2	WUS 04	185	1,495	0	0	0	0	0	0	16,052
Plate 3	WUS 05	203	3,406	0	0	9	162	0	0	48,401
	WUS 06	26	36	0	0	0	0	0	0	
Plate 4	WUS 05	414	6,221	0	0	0	0	0	0	104,304
	WUS 06	87	303	0	0	0	0	0	0	
Plate 5	WUS 02	73	305	0	0	0	0	0	0	87,191
	WUS 03	245	1,617	0	0	0	0	0	0	
	WUS 05	509	8,367	0	0	0	0	0	0	
Plate 6	WUS 01	151	735	0	0	0	0	0	0	102,509
	WUS 02	345	1,515	154	376	0	0	0	0	
	WUS 03	47	397	0	0	0	0	0	0	
	WUS 05	332	5,410	0	0	0	0	0	0	
	WUS 13	0	0	0	0	0	0	141	365	
	WUS 20	78	753	0	0	0	0	0	0	
Plate 7	WUS 01	357	1,653	0	0	0	0	0	0	54,668
	WUS 02	0	0	83	217	0	0	0	0	
Plate 8	WUS 01	323	1,614	0	0	4	14	0	0	24,563
Plate 9	N/A	0	0	0	0	0	0	0	0	15,057
Plate 10	WUS 05	77	884	0	0	0	0	0	0	7,873
	WUS 07	0	0	10	21	0	0	0	0	
Plate 11	WUS 05	560	7,324	0	0	0	0	0	0	81,631
	WUS 11	0	0	9	21	0	0	46	101	
Plate 12	WUS 05	208	3,592	0	0	0	0	0	0	137,360
	WUS 20	529	4,476	0	0	0	0	0	0	
	WUS 21	0	0	495	4,102	0	0	0	0	
Plate 13	WUS 05	8	28	0	0	14	184	0	0	715
	WUS 07	0	0	17	32	0	0	4	8	
Plate 14	WUS 20	482	3,809	0	0	0	0	0	0	59,704
	WUS 21	0	0	45	311	0	0	0	0	
Total		5,782	60,903	813	5,080	27	360	191	474	750,405

EXISTING 100-YEAR FLOODPLAIN



WETLAND



WETLAND BUFFER



WATERS OF THE US



HEDGE / TREE LINE



PROPERTY BOUNDARY



EXISTING GROUND CONTOURS (1')



PROPOSED GROUND CONTOURS (0.5')



LIMIT OF DISTURBANCE



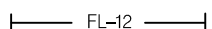
LIMIT OF PLANTING



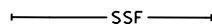
DEER FENCE



FILTER LOG



SUPER SILT FENCE



STREAM IMPACTS PERMANENT



STREAM IMPACTS TEMPORARY



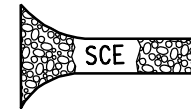
WETLAND IMPACTS TEMPORARY



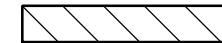
BUFFER IMPACTS TEMPORARY



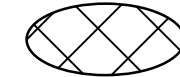
STABILIZED CONSTRUCTION ENTRANCE



ACCESS ROAD



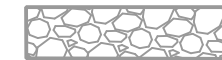
STAGING AND STOCKPILE AREA



TIMBER MATTING



PROPOSED RIPRAP



PROPOSED STREAM CHANNEL CENTERLINE



LOG VANE



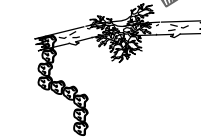
BOULDERS



ROCK AND ROLL LOGS



LOG VANE WITH ROCK J HOOK



LIVE FASCINE



ROCK CROSS VANE



LEGEND

ECCLESTON MITIGATION SITE
BALTIMORE COUNTY, MD

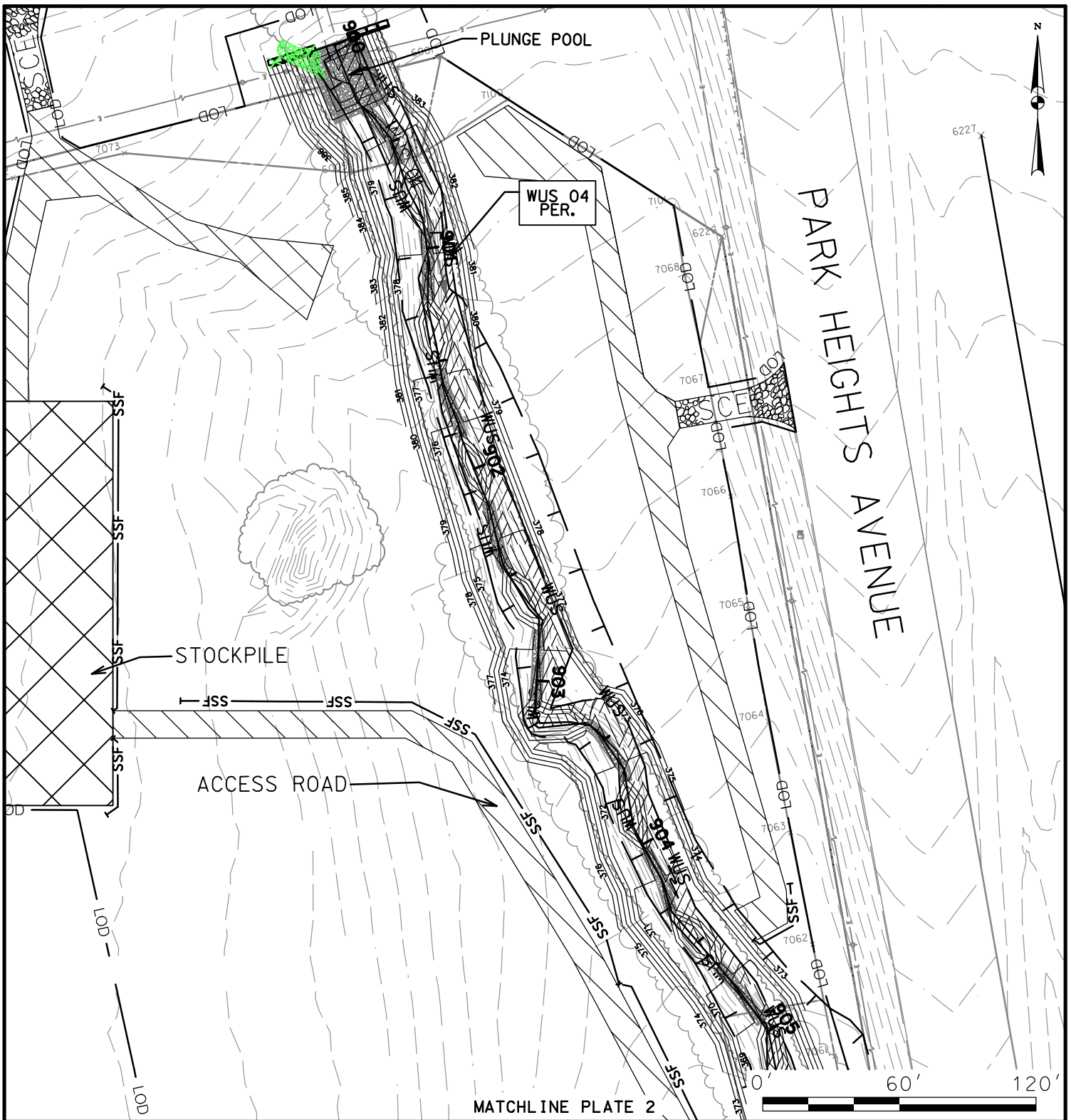


Maryland
Transportation
Authority

MARYLAND
TRANSPORTATION AUTHORITY

SCALE: N.T.S.

DATE: NOVEMBER 2023



IMPACTS ON THIS PLATE

	TEMPORARY		PERMANENT	
		SF		SF
PFO WETLAND	0	SF	0	SF
PSS WETLAND	0	SF	0	SF
PEM WETLAND	0	SF	0	SF
PERENNIAL WUS	0	LF/SF	543/6,963	LF/SF
INTERMITTENT WUS	0	LF/SF	0	LF/SF
EPHEMERAL WUS	0	LF/SF	0	LF/SF
WETLAND BUFFER	0	SF	0	SF
100-YEAR FLOODPLAIN	10,377	SF	0	SF

*100-YEAR FLOODPLAIN IMPACTS ARE NOT HATCHED

WETLAND AS-BUILT IMPACT PLATE

I-95 ETL NORTHBOUND EXTENSION
 PHASE II
 ECCLESTON MITIGATION SITE
 BALTIMORE COUNTY, MARYLAND



**MARYLAND
 TRANSPORTATION AUTHORITY**

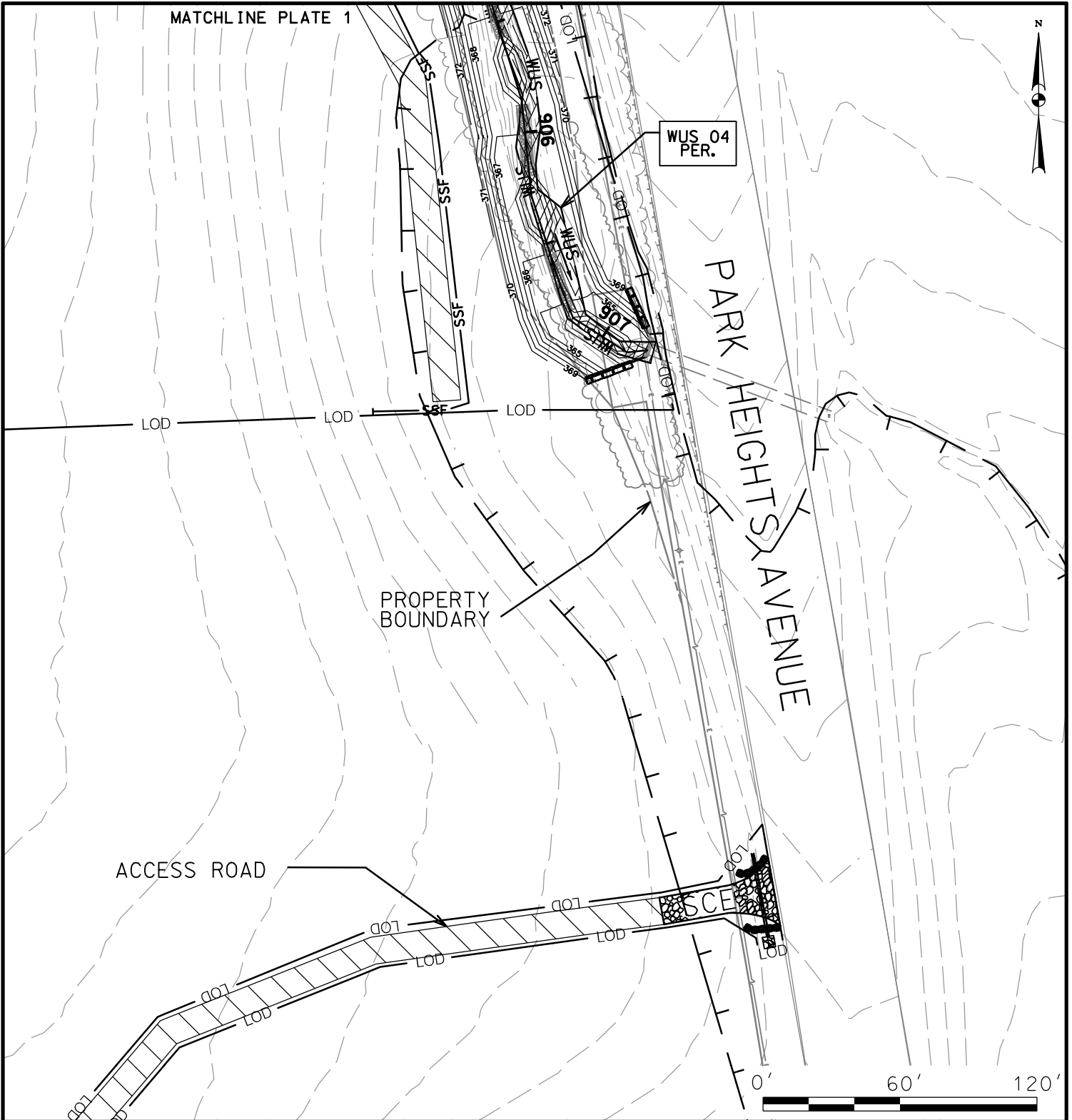
SCALE: 1" = 60'

CONTRACT NO.: KH-3038

DATE: NOVEMBER 2023

PLATE 1 OF 14

MATCHLINE PLATE 1



IMPACTS ON THIS PLATE

	TEMPORARY		PERMANENT	
	0	SF	0	SF
PFO WETLAND	0	SF	0	SF
PSS WETLAND	0	SF	0	SF
PEM WETLAND	0	SF	0	SF
PERENNIAL WUS	0	LF/SF	185/1,495	LF/SF
INTERMITTENT WUS	0	LF/SF	0	LF/SF
EPHEMERAL WUS	0	LF/SF	0	LF/SF
WETLAND BUFFER	0	SF	0	SF
100-YEAR FLOODPLAIN	16,052	SF	0	SF

*100-YEAR FLOODPLAIN IMPACTS ARE NOT HATCHED

WETLAND AS-BUILT IMPACT PLATE

I-95 ETL NORTHBOUND EXTENSION
 PHASE II
 ECCLESTON MITIGATION SITE
 BALTIMORE COUNTY, MARYLAND



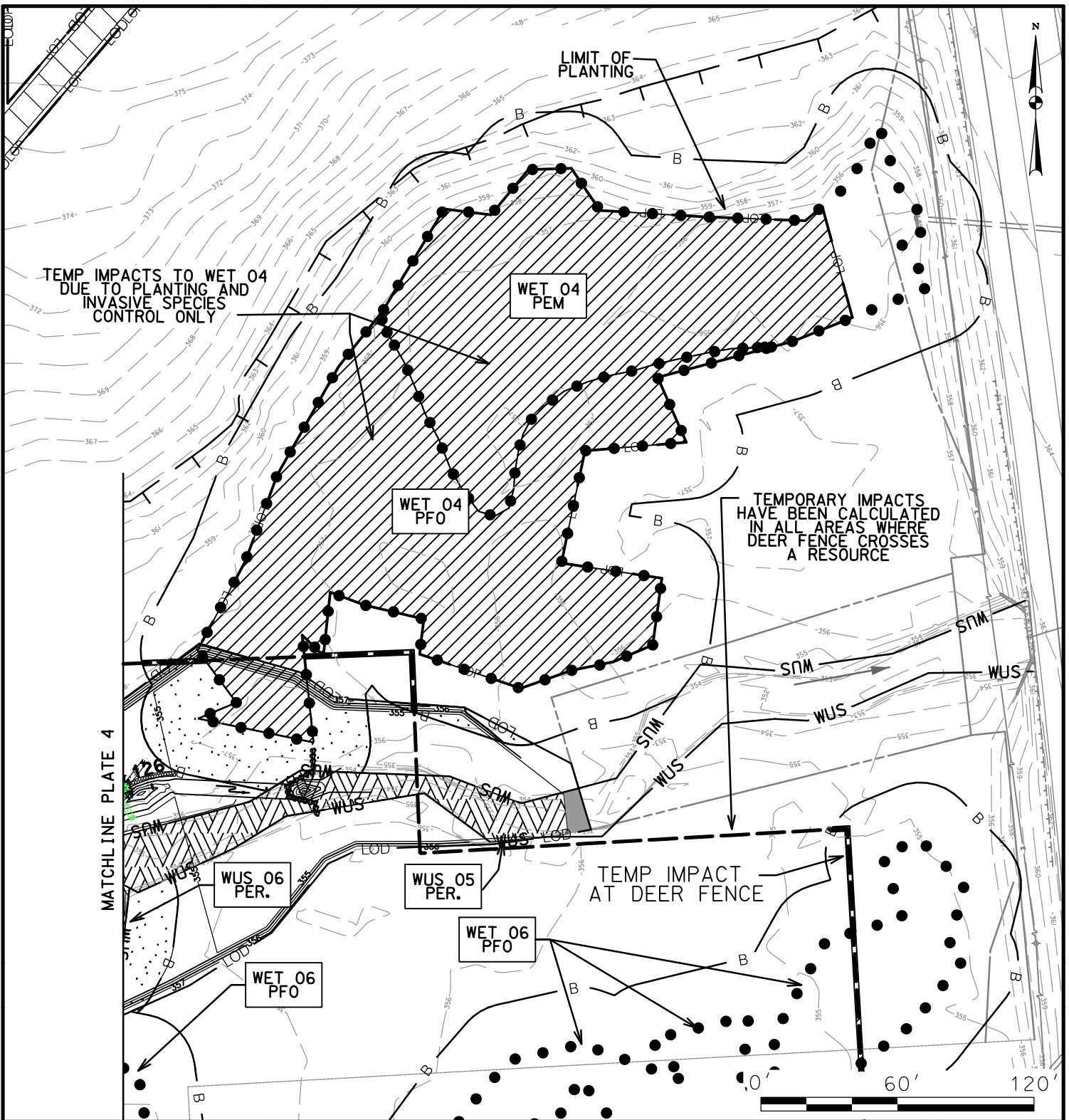
**MARYLAND
TRANSPORTATION AUTHORITY**

SCALE: 1" = 60'

CONTRACT NO.: KH-3038

DATE: NOVEMBER 2023

PLATE 2 OF 14



IMPACTS ON THIS PLATE

	TEMPORARY		PERMANENT	
PFO WETLAND	19,100	SF	0	SF
PSS WETLAND	0	SF	0	SF
PEM WETLAND	15,461	SF	0	SF
PERENNIAL WUS	9/162	LF/SF	229/3,442	LF/SF
INTERMITTENT WUS	0	LF/SF	0	LF/SF
EPHEMERAL WUS	0	LF/SF	0	LF/SF
WETLAND BUFFER	5,406	SF	0	SF
100-YEAR FLOODPLAIN	48,401	SF	0	SF

*100-YEAR FLOODPLAIN IMPACTS ARE NOT HATCHED

WETLAND AS-BUILT IMPACT PLATE

I-95 ETL NORTHBOUND EXTENSION
 PHASE II
 ECCLESTON MITIGATION SITE
 BALTIMORE COUNTY, MARYLAND



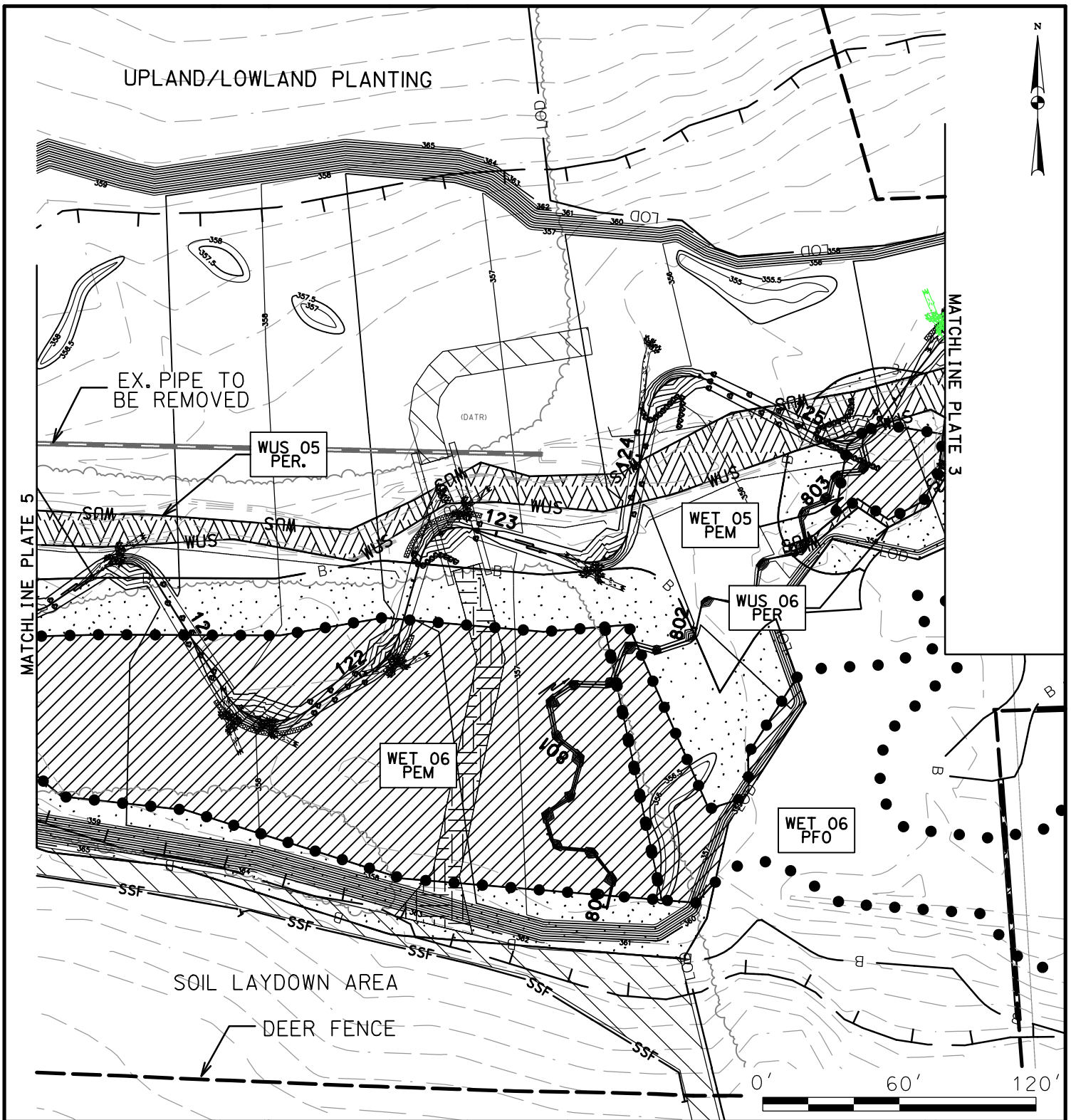
**MARYLAND
 TRANSPORTATION AUTHORITY**

SCALE: 1" = 60'

CONTRACT NO.: KH-3038

DATE: NOVEMBER 2023

PLATE 3 OF 14



IMPACTS ON THIS PLATE

	TEMPORARY		PERMANENT	
PFO WETLAND	3,341	SF	0	SF
PSS WETLAND	0	SF	0	SF
PEM WETLAND	26,762	SF	0	SF
PERENNIAL WUS	0	LF/SF	501/6,524	LF/SF
INTERMITTENT WUS	0	LF/SF	0	LF/SF
EPHEMERAL WUS	0	LF/SF	0	LF/SF
WETLAND BUFFER	19,949	SF	0	SF
100-YEAR FLOODPLAIN	104,304	SF	0	SF

*100-YEAR FLOODPLAIN IMPACTS ARE NOT HATCHED

WETLAND AS-BUILT IMPACT PLATE

I-95 ETL NORTHBOUND EXTENSION
 PHASE II
 ECCLESTON MITIGATION SITE
 BALTIMORE COUNTY, MARYLAND



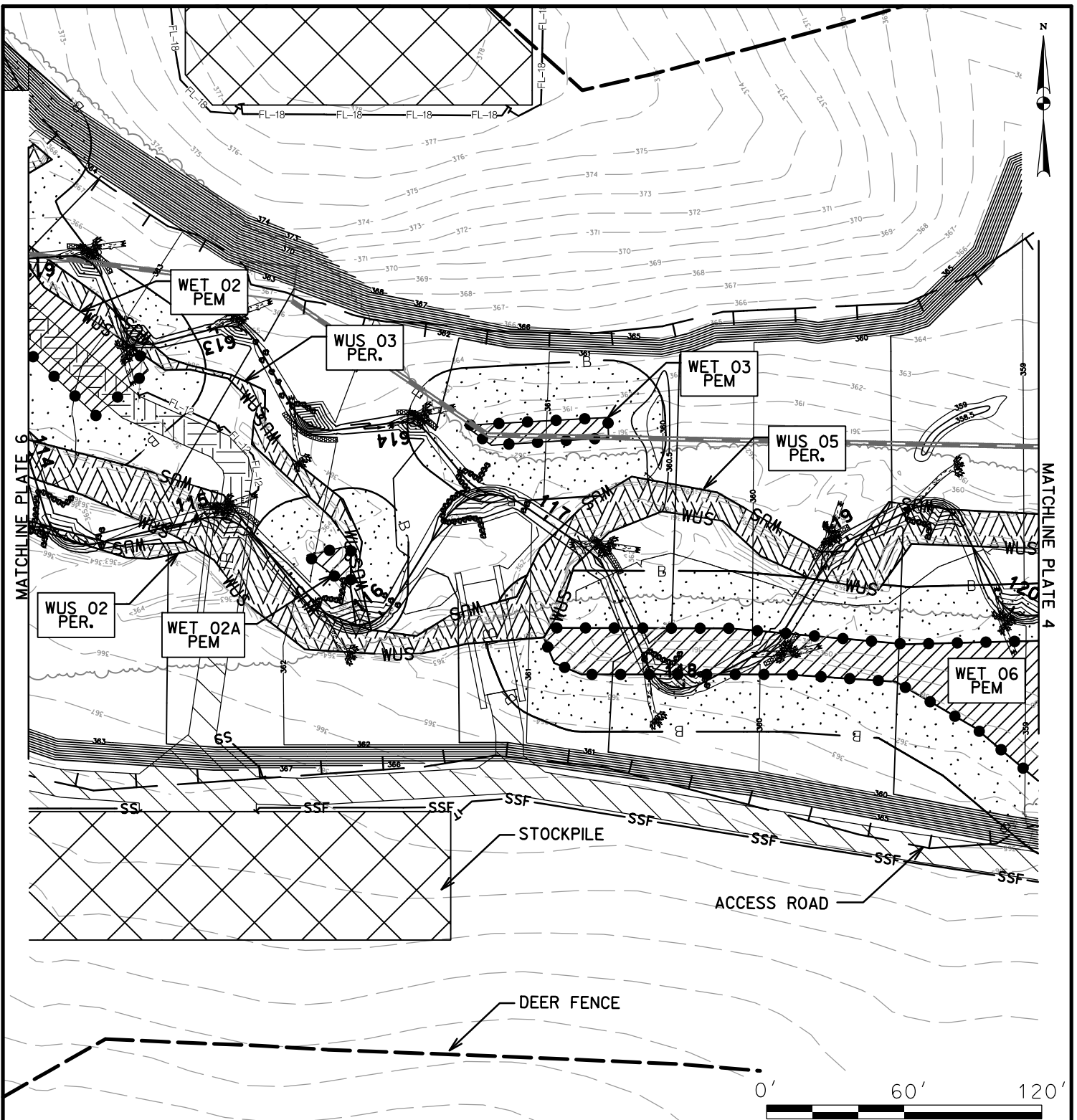
**MARYLAND
 TRANSPORTATION AUTHORITY**

SCALE: 1" = 60'

CONTRACT NO.: KH-3038

DATE: NOVEMBER 2023

PLATE 4 OF 14



IMPACTS ON THIS PLATE

	TEMPORARY		PERMANENT	
PFO WETLAND	0	SF	0	SF
PSS WETLAND	0	SF	0	SF
PEM WETLAND	7,453	SF	0	SF
PERENNIAL WUS	0	LF/SF	827/10,289	LF/SF
INTERMITTENT WUS	0	LF/SF	0	LF/SF
EPHEMERAL WUS	0	LF/SF	0	LF/SF
WETLAND BUFFER	24,475	SF	0	SF
100-YEAR FLOODPLAIN	87,191	SF	0	SF

*100-YEAR FLOODPLAIN IMPACTS ARE NOT HATCHED

WETLAND AS-BUILT IMPACT PLATE

I-95 ETL NORTHBOUND EXTENSION
 PHASE II
 ECCLESTON MITIGATION SITE
 BALTIMORE COUNTY, MARYLAND



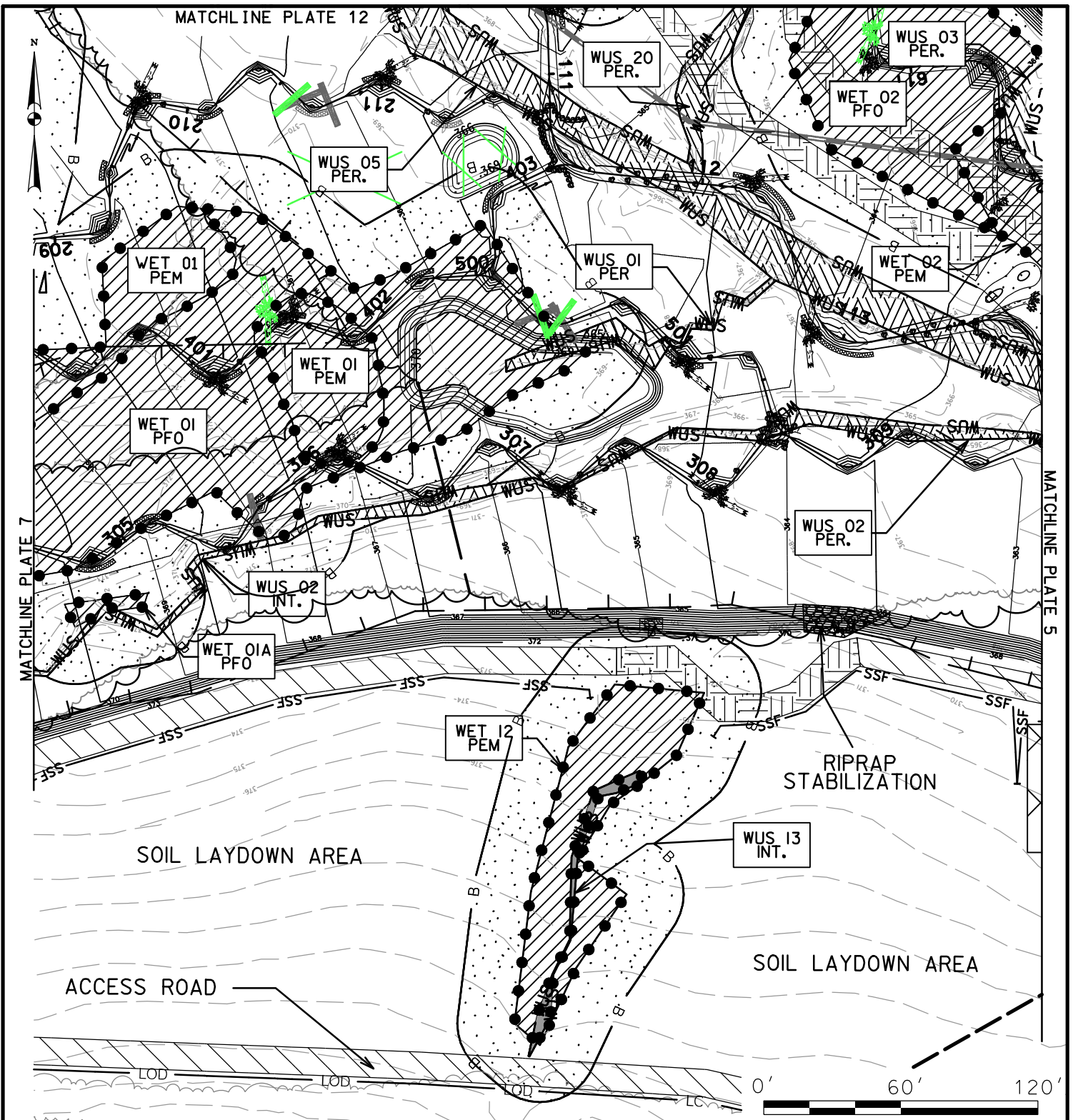
**MARYLAND
 TRANSPORTATION AUTHORITY**

SCALE: 1" = 60'

CONTRACT NO.: KH-3038

DATE: NOVEMBER 2023

PLATE 5 OF 14



IMPACTS ON THIS PLATE

	TEMPORARY		PERMANENT	
	Area	Code	Area	Code
PFO WETLAND	23,309	SF	0	SF
PSS WETLAND	0	SF	0	SF
PEM WETLAND	11,680	SF	0	SF
PERENNIAL WUS	0	LF/SF	953/8,810	LF/SF
INTERMITTENT WUS	141/365	LF/SF	154/376	LF/SF
EPHEMERAL WUS	0	LF/SF	0	LF/SF
WETLAND BUFFER	36,714	SF	0	SF
100-YEAR FLOODPLAIN	102,509	SF	0	SF

*100-YEAR FLOODPLAIN IMPACTS ARE NOT HATCHED

WETLAND AS-BUILT IMPACT PLATE

I-95 ETL NORTHBOUND EXTENSION
 PHASE II
 ECCLESTON MITIGATION SITE
 BALTIMORE COUNTY, MARYLAND



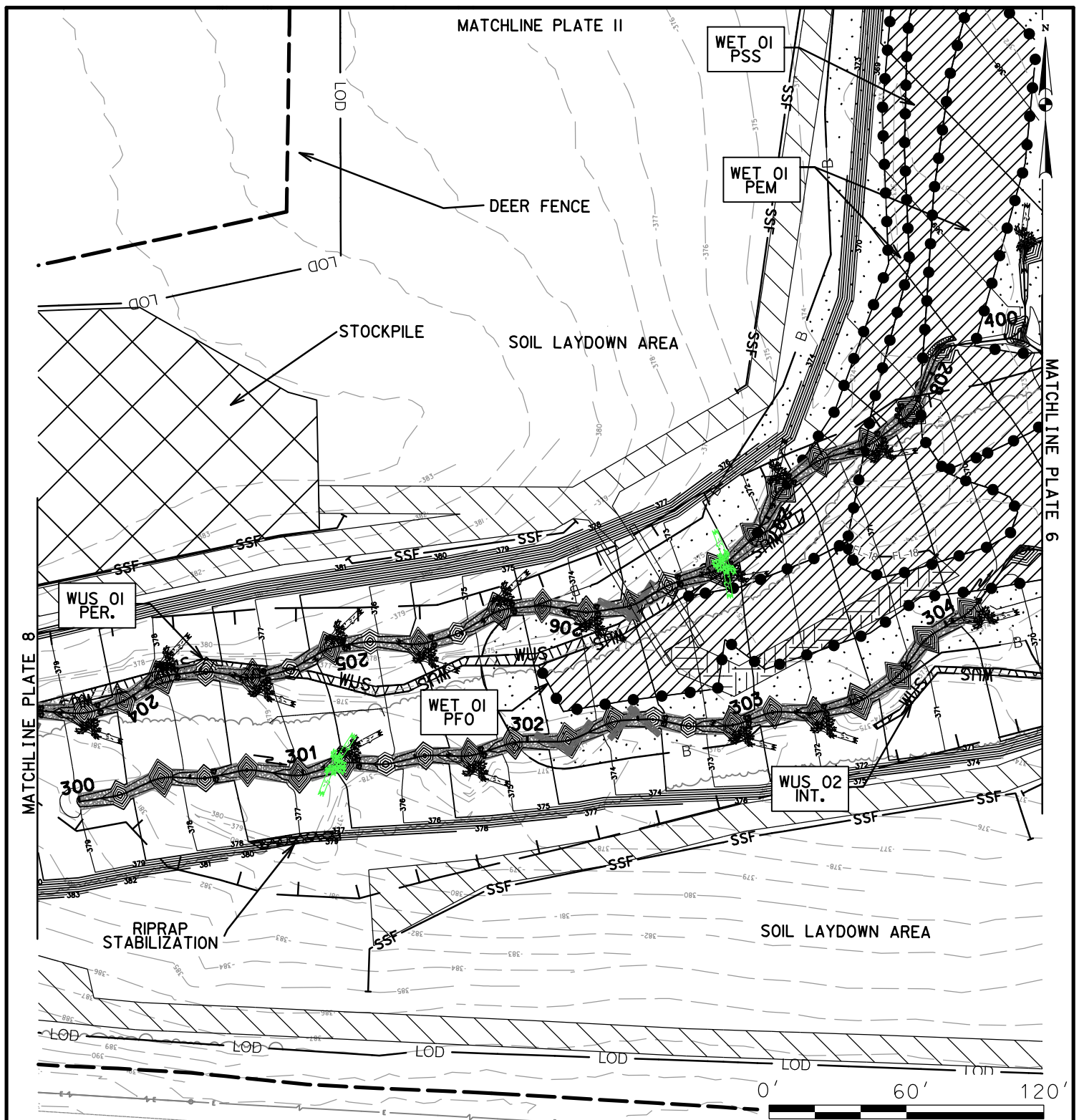
**MARYLAND
 TRANSPORTATION AUTHORITY**

SCALE: 1" = 60'

CONTRACT NO.: KH-3038

DATE: NOVEMBER 2023

PLATE 6 OF 14



IMPACTS ON THIS PLATE

	TEMPORARY		PERMANENT	
PFO WETLAND	7,112	SF	0	SF
PSS WETLAND	6,012	SF	0	SF
PEM WETLAND	11,077	SF	0	SF
PERENNIAL WUS	0	LF/SF	357/1,653	LF/SF
INTERMITTENT WUS	0	LF/SF	83/217	LF/SF
EPHEMERAL WUS	0	LF/SF	0	LF/SF
WETLAND BUFFER	17,054	SF	0	SF
100-YEAR FLOODPLAIN	54,668	SF	0	SF

*100-YEAR FLOODPLAIN IMPACTS ARE NOT HATCHED

WETLAND AS-BUILT IMPACT PLATE

I-95 ETL NORTHBOUND EXTENSION
 PHASE II
 ECCLESTON MITIGATION SITE
 BALTIMORE COUNTY, MARYLAND



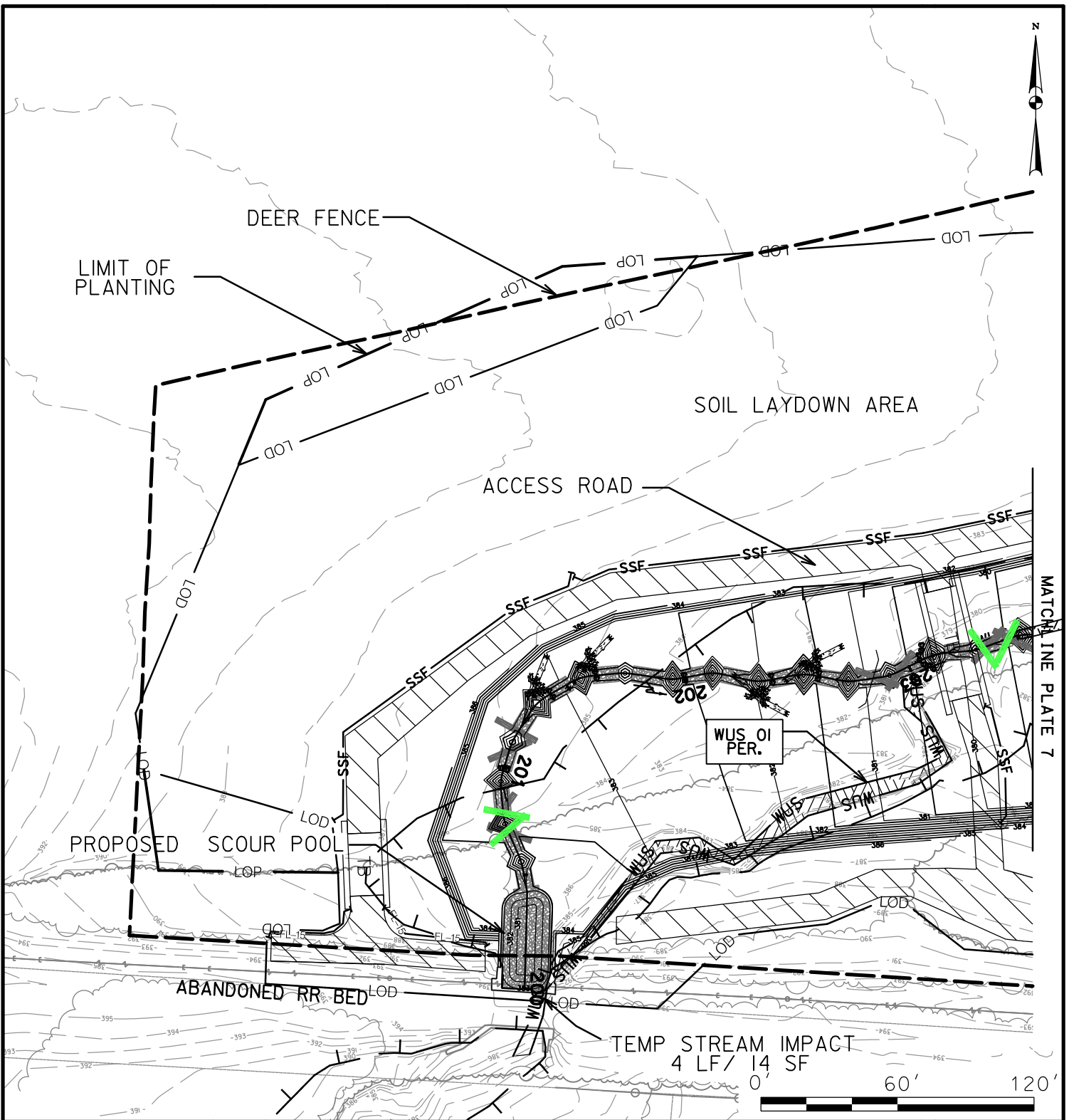
**MARYLAND
 TRANSPORTATION AUTHORITY**

SCALE: 1" = 60'

CONTRACT NO.: KH-3038

DATE: NOVEMBER 2023

PLATE 7 OF 14



IMPACTS ON THIS PLATE

	TEMPORARY		PERMANENT	
PFO WETLAND	0	SF	0	SF
PSS WETLAND	0	SF	0	SF
PEM WETLAND	0	SF	0	SF
PERENNIAL WUS	4/14	LF/SF	323/1,614	LF/SF
INTERMITTENT WUS	0	LF/SF	0	LF/SF
EPHEMERAL WUS	0	LF/SF	0	LF/SF
WETLAND BUFFER	0	SF	0	SF
100-YEAR FLOODPLAIN	24,563	SF	0	SF

*100-YEAR FLOODPLAIN IMPACTS ARE NOT HATCHED

WETLAND AS-BUILT IMPACT PLATE

I-95 ETL NORTHBOUND EXTENSION
 PHASE II
 ECCLESTON MITIGATION SITE
 BALTIMORE COUNTY, MARYLAND



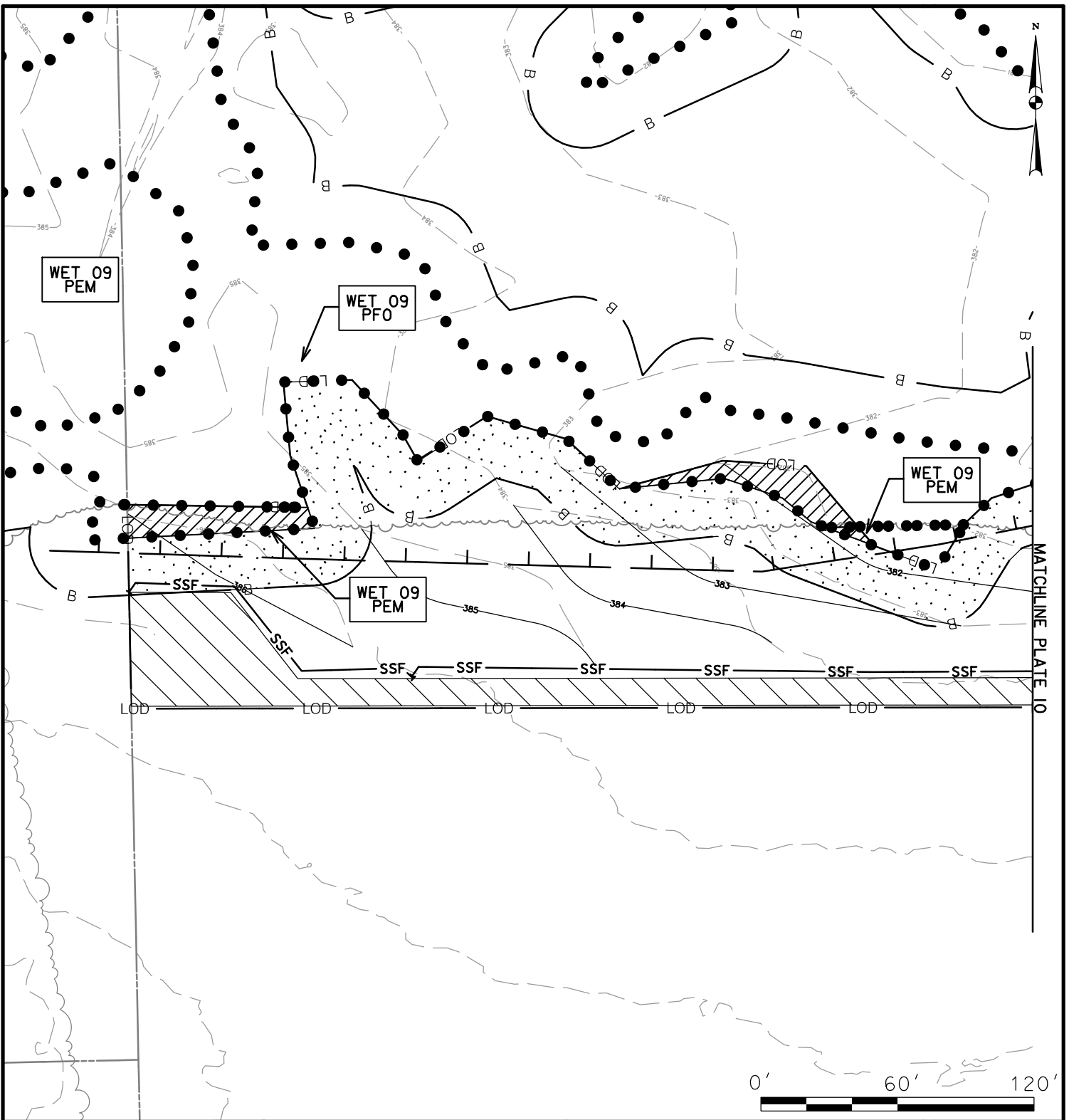
**MARYLAND
 TRANSPORTATION AUTHORITY**

SCALE: 1" = 60'

CONTRACT NO.: KH-3038

DATE: NOVEMBER 2023

PLATE 8 OF 14



IMPACTS ON THIS PLATE

	TEMPORARY		PERMANENT	
PFO WETLAND	997	SF	0	SF
PSS WETLAND	0	SF	0	SF
PEM WETLAND	1,026	SF	0	SF
PERENNIAL WUS	0	LF/SF	0	LF/SF
INTERMITTENT WUS	0	LF/SF	0	LF/SF
EPHEMERAL WUS	0	LF/SF	0	LF/SF
WETLAND BUFFER	13,166	SF	0	SF
100-YEAR FLOODPLAIN	15,057	SF	0	SF

*100-YEAR FLOODPLAIN IMPACTS ARE NOT HATCHED

WETLAND AS-BUILT IMPACT PLATE

I-95 ETL NORTHBOUND EXTENSION
 PHASE II
 ECCLESTON MITIGATION SITE
 BALTIMORE COUNTY, MARYLAND



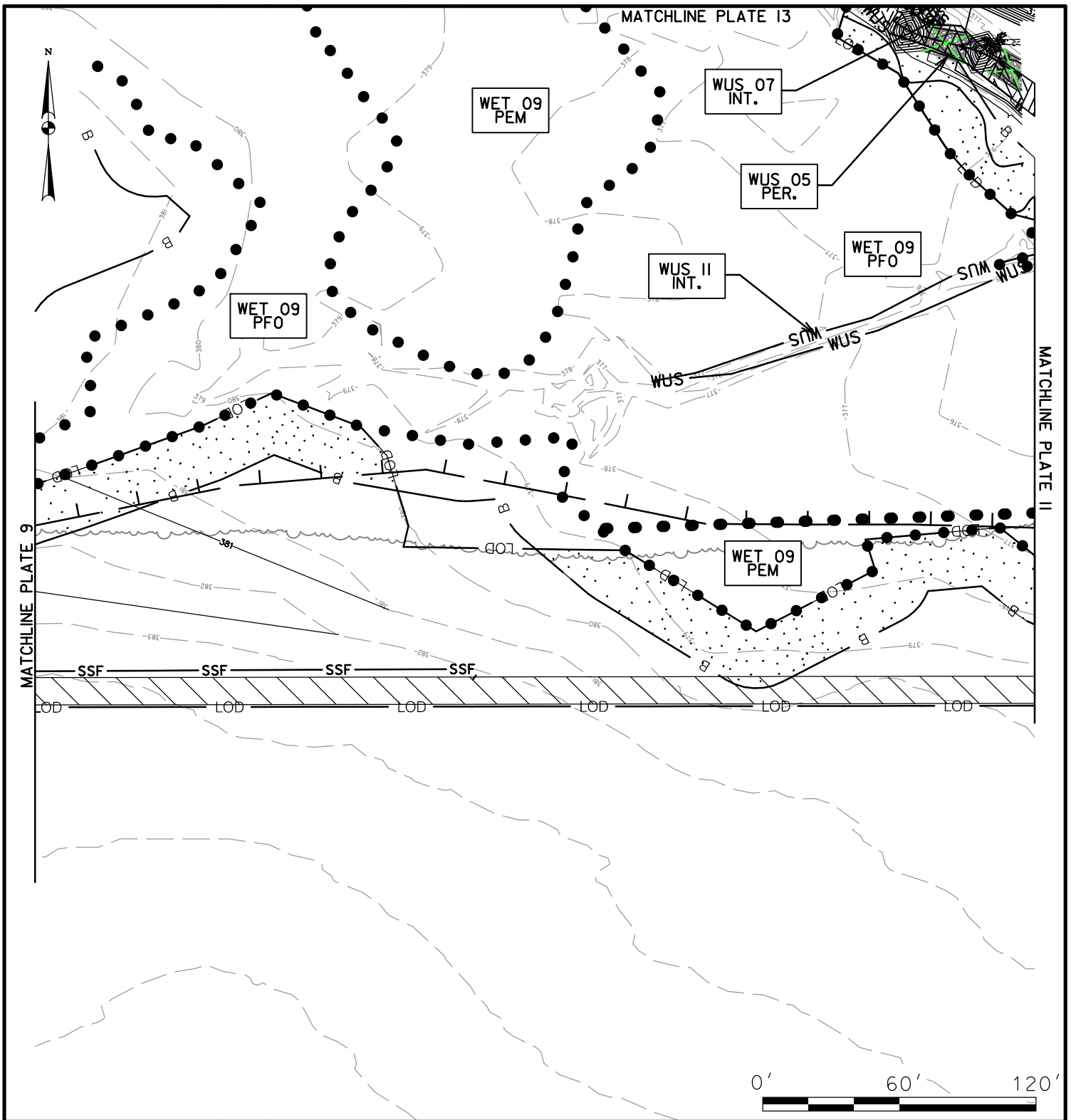
**MARYLAND
 TRANSPORTATION AUTHORITY**

SCALE: 1" = 60'

CONTRACT NO.: KH-3038

DATE: NOVEMBER 2023

PLATE 9 OF 14



IMPACTS ON THIS PLATE

	TEMPORARY		PERMANENT	
PFO WETLAND	0	SF	0	SF
PSS WETLAND	0	SF	0	SF
PEM WETLAND	0	SF	0	SF
PERENNIAL WUS	0	LF/SF	77/884	LF/SF
INTERMITTENT WUS	0	LF/SF	10/21	LF/SF
EPHEMERAL WUS	0	LF/SF	0	LF/SF
WETLAND BUFFER	12,503	SF	0	SF
100-YEAR FLOODPLAIN	7,873	SF	0	SF

*100-YEAR FLOODPLAIN IMPACTS ARE NOT HATCHED

WETLAND AS-BUILT IMPACT PLATE

I-95 ETL NORTHBOUND EXTENSION
 PHASE II
 ECCLESTON MITIGATION SITE
 BALTIMORE COUNTY, MARYLAND



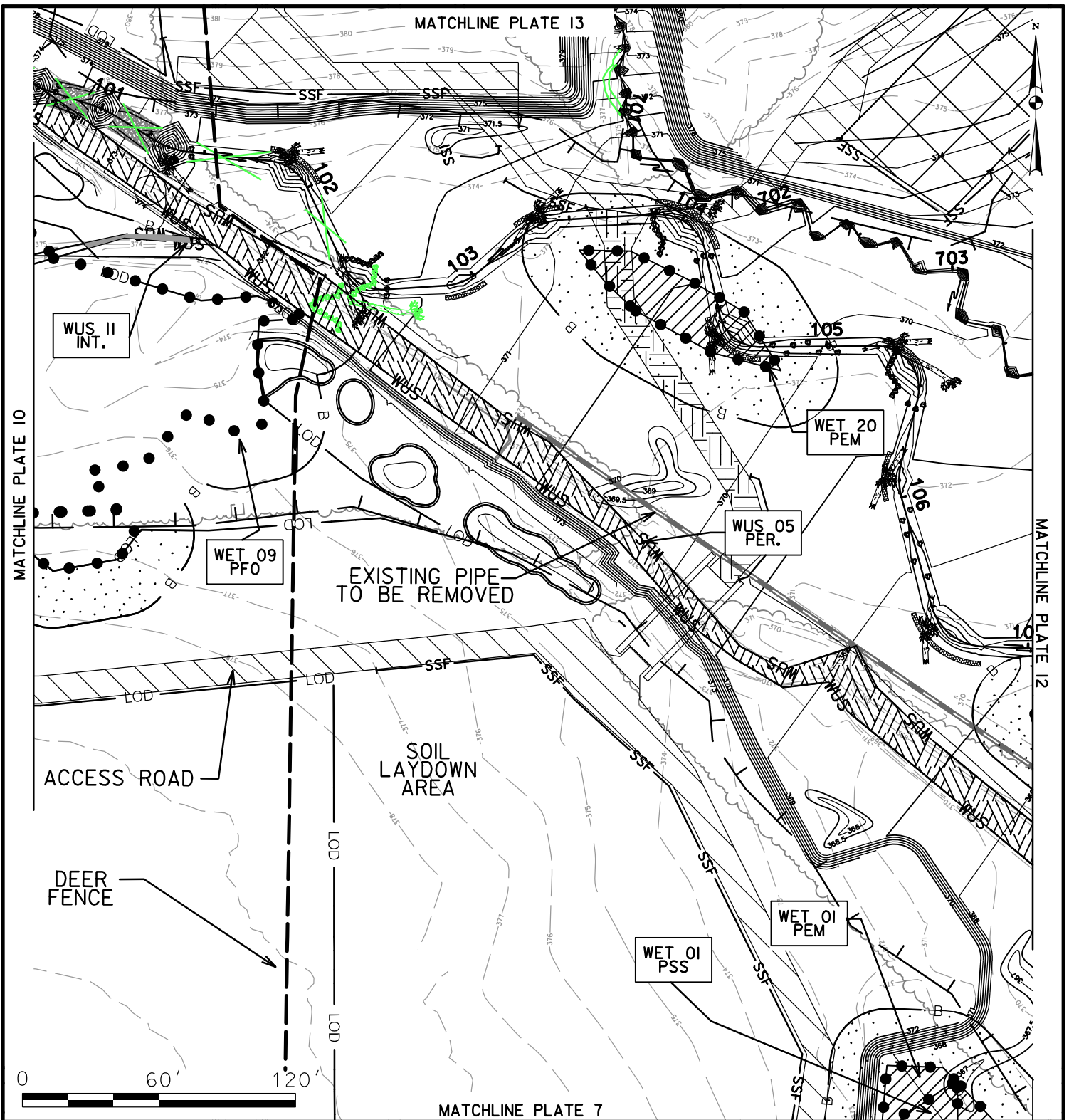
**MARYLAND
 TRANSPORTATION AUTHORITY**

SCALE: 1" = 60'

CONTRACT NO.: KH-3038

DATE: NOVEMBER 2023

PLATE 10 OF 14



IMPACTS ON THIS PLATE

	TEMPORARY		PERMANENT	
PFO WETLAND	0	SF	0	SF
PSS WETLAND	247	SF	0	SF
PEM WETLAND	2,374	SF	0	SF
PERENNIAL WUS	0	LF/SF	560/7,324	LF/SF
INTERMITTENT WUS	46/101	LF/SF	09/21	LF/SF
EPHEMERAL WUS	0	LF/SF	0	LF/SF
WETLAND BUFFER	16,844	SF	0	SF
100-YEAR FLOODPLAIN	81,631	SF	0	SF

*100-YEAR FLOODPLAIN IMPACTS ARE NOT HATCHED

WETLAND AS-BUILT IMPACT PLATE

I-95 ETL NORTHBOUND EXTENSION
 PHASE II
 ECCLESTON MITIGATION SITE
 BALTIMORE COUNTY, MARYLAND



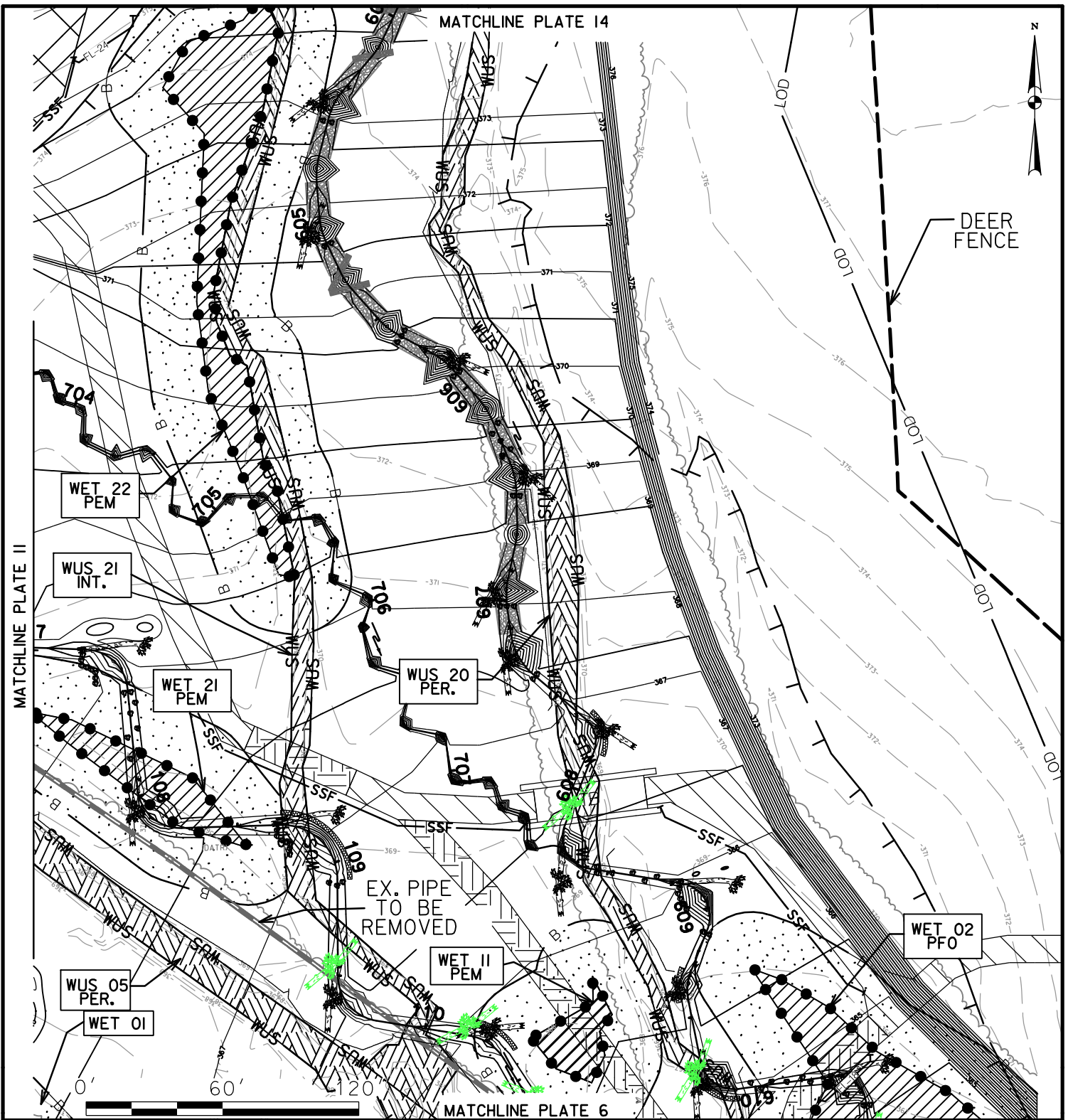
**MARYLAND
 TRANSPORTATION AUTHORITY**

SCALE: 1" = 60'

CONTRACT NO.: KH-3038

DATE: NOVEMBER 2023

PLATE II OF 14



IMPACTS ON THIS PLATE

	TEMPORARY		PERMANENT	
PFO WETLAND	2,284	SF	0	SF
PSS WETLAND	0	SF	0	SF
PEM WETLAND	6,441	SF	0	SF
PERENNIAL WUS	0	LF/SF	737/8,068	LF/SF
INTERMITTENT WUS	0	LF/SF	495/4,102	LF/SF
EPHEMERAL WUS	0	LF/SF	0	LF/SF
WETLAND BUFFER	29,464	SF	0	SF
100-YEAR FLOODPLAIN	137,360	SF	0	SF

*100-YEAR FLOODPLAIN IMPACTS ARE NOT HATCHED

WETLAND AS-BUILT IMPACT PLATE

I-95 ETL NORTHBOUND EXTENSION
 PHASE II
 ECCLESTON MITIGATION SITE
 BALTIMORE COUNTY, MARYLAND



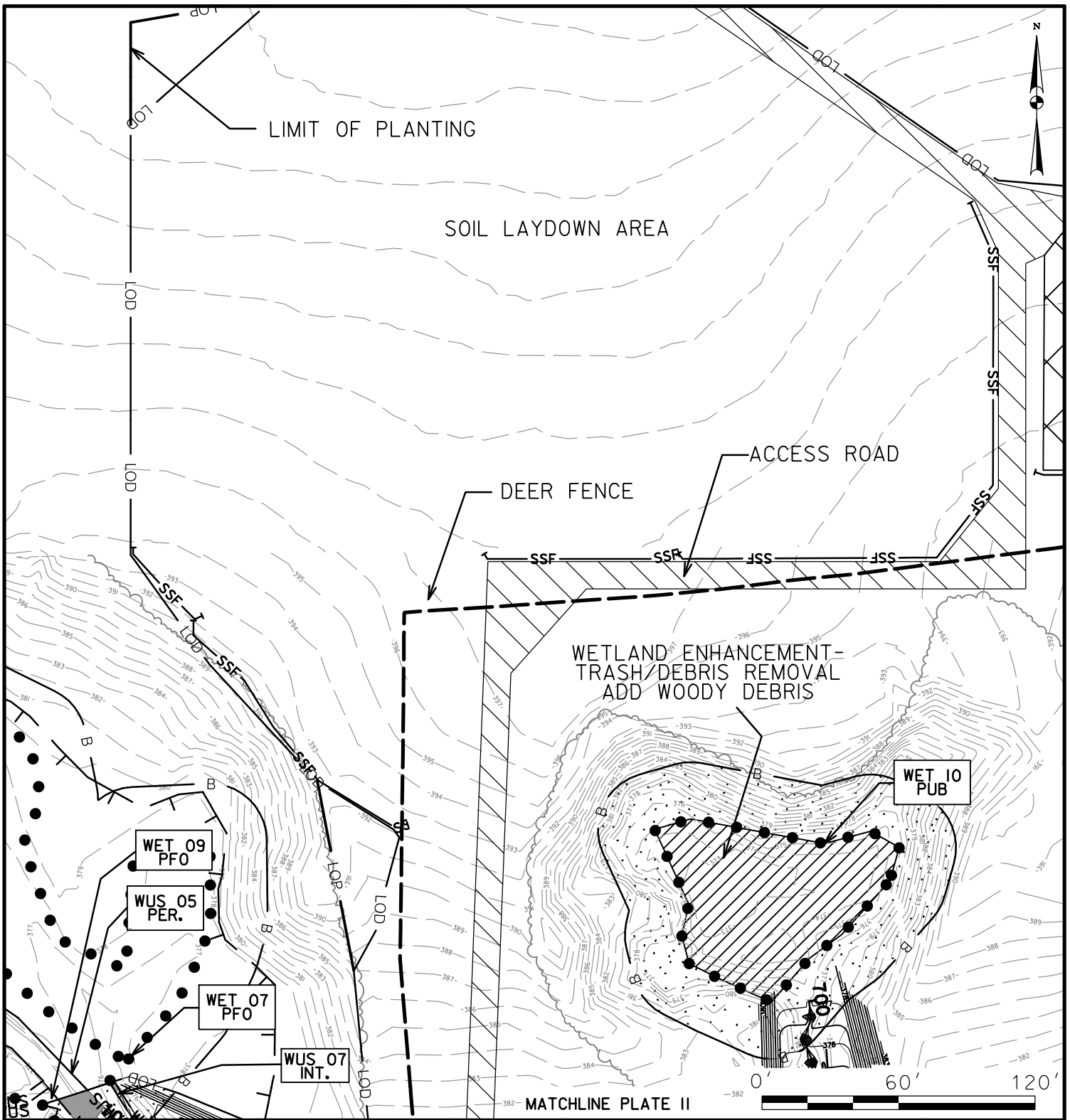
**MARYLAND
 TRANSPORTATION AUTHORITY**

SCALE: 1" = 60'

CONTRACT NO.: KH-3038

DATE: NOVEMBER 2023

PLATE 12 OF 14



IMPACTS ON THIS PLATE

	TEMPORARY		PERMANENT	
PFO WETLAND	0	SF	0	SF
PUB WETLAND	5,236	SF	0	SF
PEM WETLAND	0	SF	0	SF
PERENNIAL WUS	14/184	LF/SF	8/28	LF/SF
INTERMITTENT WUS	4/8	LF/SF	17/32	LF/SF
EPHEMERAL WUS	0	LF/SF	0	LF/SF
WETLAND BUFFER	10,089	SF	0	SF
100-YEAR FLOODPLAIN	715	SF	0	SF

*100-YEAR FLOODPLAIN IMPACTS ARE NOT HATCHED

WETLAND AS-BUILT IMPACT PLATE

I-95 ETL NORTHBOUND EXTENSION
 PHASE II
 ECCLESTON MITIGATION SITE
 BALTIMORE COUNTY, MARYLAND



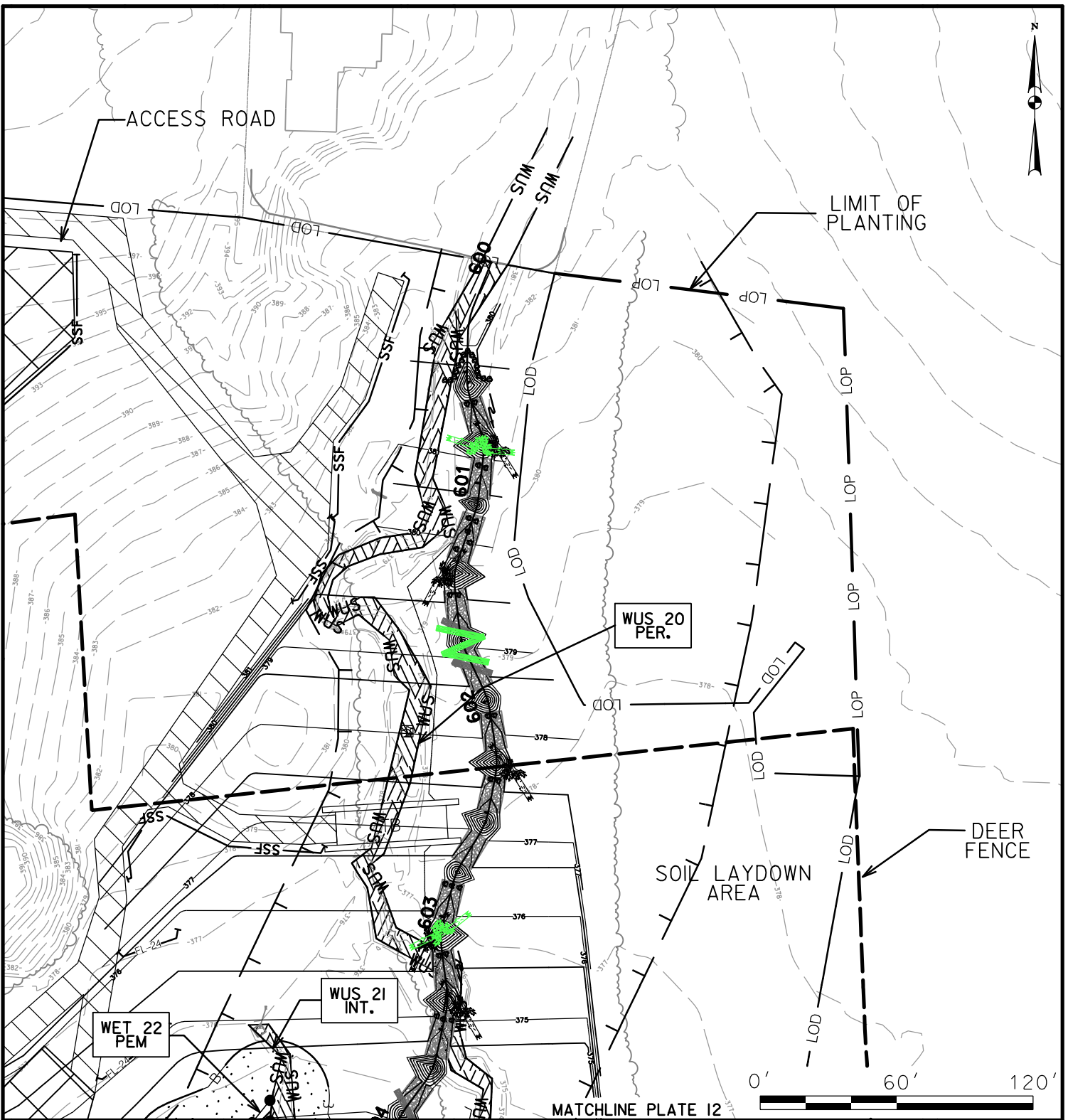
**MARYLAND
 TRANSPORTATION AUTHORITY**

SCALE: 1" = 60'

CONTRACT NO.: KH-3038

DATE: NOVEMBER 2023

PLATE 13 OF 14



IMPACTS ON THIS PLATE

	TEMPORARY		PERMANENT	
PFO WETLAND	0	SF	0	SF
PSS WETLAND	0	SF	0	SF
PEM WETLAND	36	SF	0	SF
PERENNIAL WUS	0	LF/SF	482/3,809	LF/SF
INTERMITTENT WUS	0	LF/SF	45/311	LF/SF
EPHEMERAL WUS	0	LF/SF	0	LF/SF
WETLAND BUFFER	1,505	SF	0	SF
100-YEAR FLOODPLAIN	59,704	SF	0	SF

*100-YEAR FLOODPLAIN IMPACTS ARE NOT HATCHED

WETLAND AS-BUILT IMPACT PLATE

I-95 ETL NORTHBOUND EXTENSION
 PHASE II
 ECCLESTON MITIGATION SITE
 BALTIMORE COUNTY, MARYLAND



**MARYLAND
 TRANSPORTATION AUTHORITY**

SCALE: 1" = 60'

CONTRACT NO.: KH-3038

DATE: NOVEMBER 2023

PLATE 14 OF 14