



# I-895 ROADWORK NEAR MD 295 EXPECT DELAYS

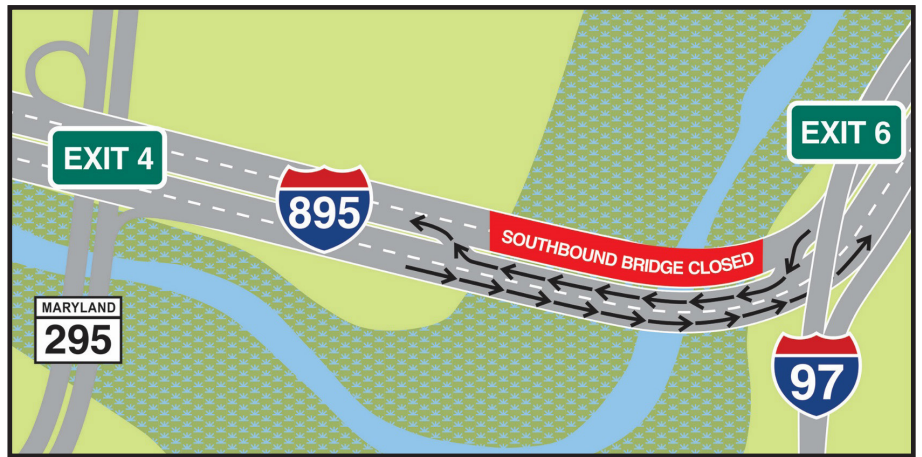
## Use I-95 in peak times.

@TheMDTA #i895bmore

## I-895 Patapsco Flats

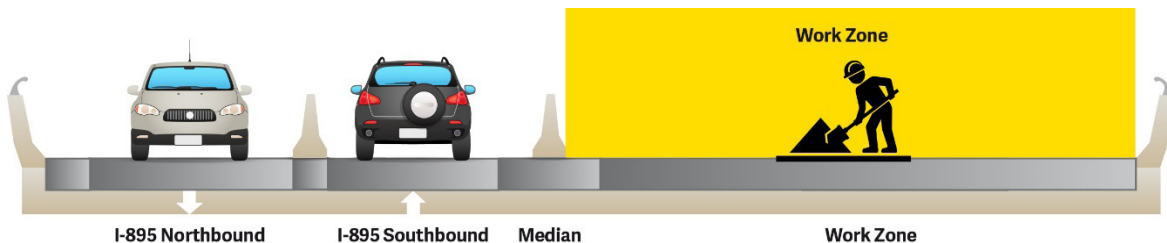
### Changing traffic patterns through Summer 2019 on I-895 between Exit 6 (I-97 and MD 2 spur road) and Exit 4 (MD 295)

The Maryland Transportation Authority (MDTA) is replacing the bridge deck and superstructure on the bridge carrying I-895 over the Patapsco River Flats, located between Exit 6 (I-97 and MD 2 spur road) and Exit 4 (MD 295). This preservation project, funded completely by toll revenue, is part of the MDTA's commitment to preserving and maintaining the State's aging toll bridges, tunnels and highways.



**Beginning in late spring, southbound traffic will be diverted to the newly completed northbound bridge to allow construction on the southbound bridge. The southbound bridge is expected to reopen Summer 2019.**

Project involves replacing the bridge's superstructure in its entirety, which will reduce the number of bridge joints for a smoother ride.



**Get current traffic patterns at [mdta.maryland.gov](http://mdta.maryland.gov).  
Follow us @The MDTA on Twitter or #i895bmore.**

