

I-95 at Belvidere Road Transportation Improvement Study



WELCOME VIRTUAL PROJECT UPDATE

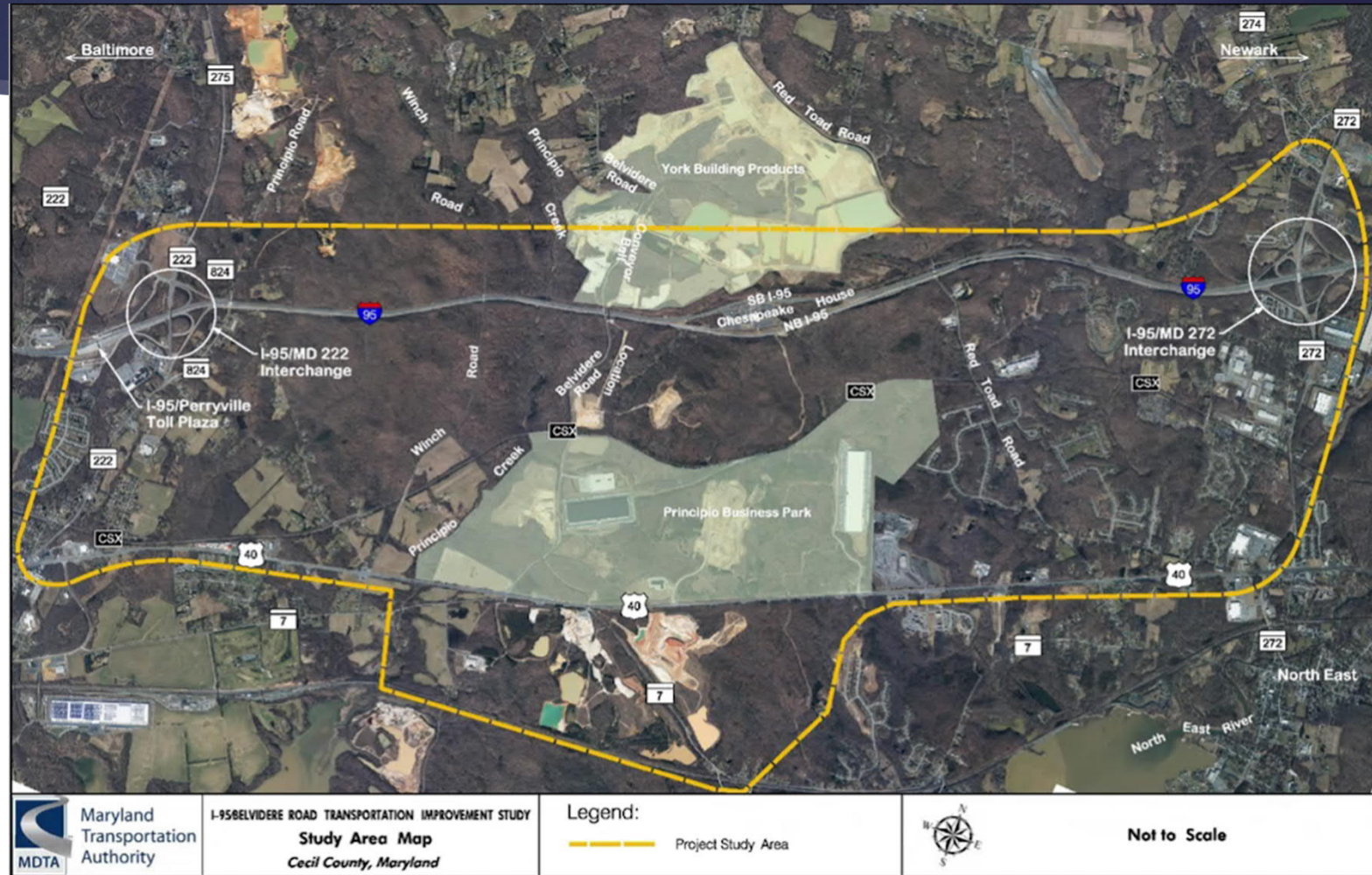
MAY 19, 2020



Project Introduction/ Overview

- ▶ The Maryland Transportation Authority (MDTA), in coordination with the Federal Highway Administration (FHWA), is conducting a National Environmental Policy Act (NEPA) study to identify potential improvements to Interstate 95 (I-95), Belvidere Road and other nearby transportation facilities between MD 272 and MD 222 in Cecil County, MD
- ▶ I-95 is a major corridor supporting passenger and freight transportation along the eastern seaboard, including Maryland. I-95 links Cecil County with major metropolitan areas and transportation hubs, such as Baltimore and Philadelphia.
- ▶ The Project Study Area generally extends along I 95 between MD 222 and MD 272. It includes the existing and future boundary of the Principio Business Park, which is located south of I-95 along Belvidere Road, within the Cecil County-designated Principio Enterprise Zone. The Principio Business Park is planned for future growth. This study seeks to address existing and future travel demand linked to this growth.

Project Study Area



Project Purpose

- ▶ The project study began in 2018 and has included two public open house events in 2018 and 2019, as well as ongoing opportunity for public information and comments. As presented in previous open houses the purpose of this project is to facilitate the safe and efficient flow of local, commuter, and commercial vehicle traffic movements of people and goods along I-95 in the Belvidere Road area, while providing a cost-effective and environmentally sensitive multi-modal transportation system that supports existing and future travel demand, land use and development efforts that are consistent with state and Cecil County planning policies.

Project Need

Three specific needs for the project were identified:

- ▶ Accommodate the increased traffic demand and operations associated with the proposed development.
- ▶ Address safety concerns related to additional traffic, including truck traffic associated with the proposed development.
- ▶ Ensure the ability of the roadway network in the vicinity of Belvidere Road to support economic development and job opportunities within the Cecil County Principio Enterprise Zone (CCPEZ).

Alternatives Retained for Detail Study

▶ Alternative 1: No-Build

- ▶ This alternative is carried forward as a baseline condition comparison. As part of the No-Build Alternative, short-term minor reconstruction, such as safety upgrading and maintenance.

▶ Alternative 4D Option 1: Modified Partial Cloverleaf Interchange

- ▶ This alternative offers one of the best operational benefits compared to the full range of proposed alternatives and results in the lowest level of environmental impacts.

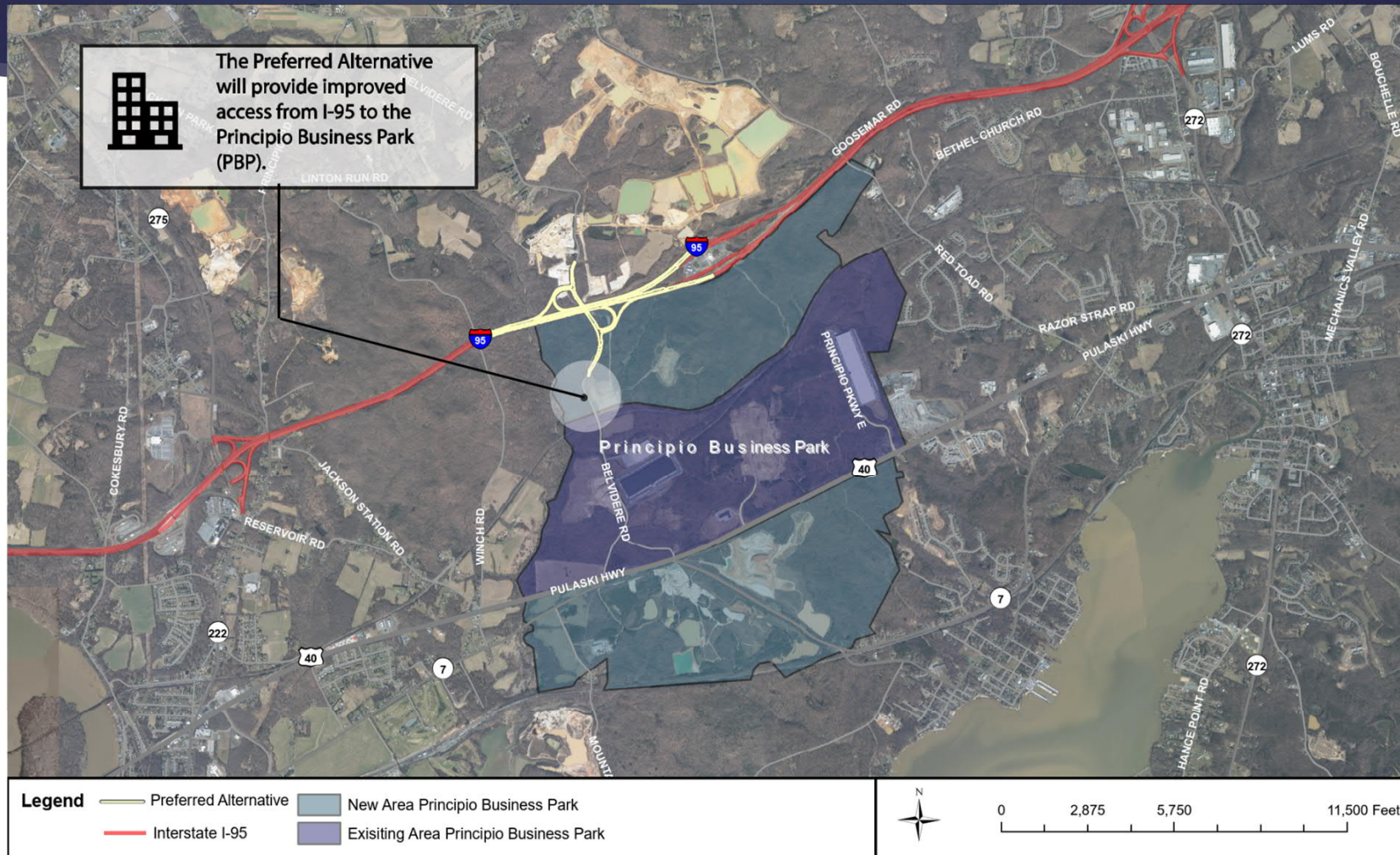
Interchange Overview



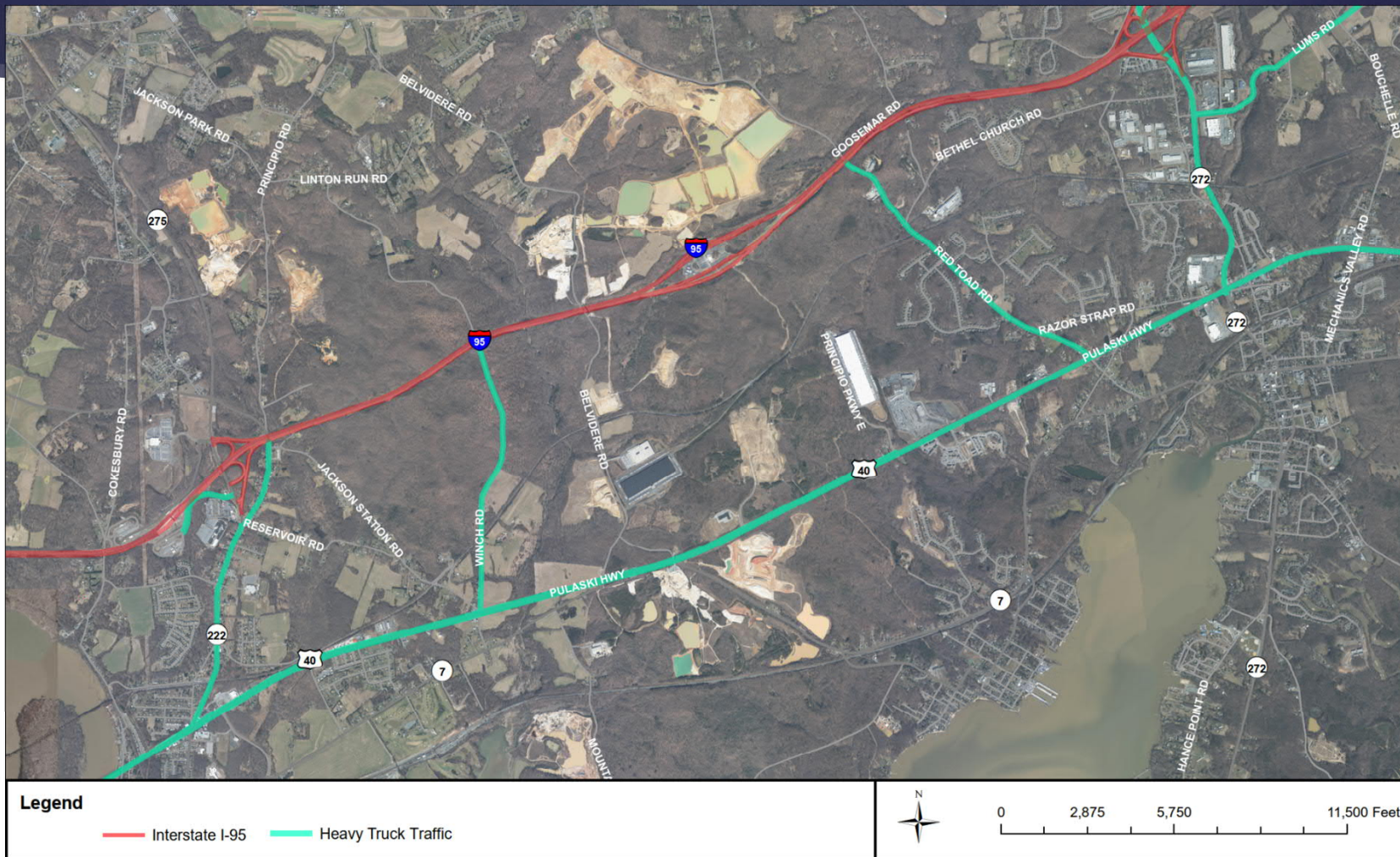
Shifted Modified Partial Cloverleaf Interchange



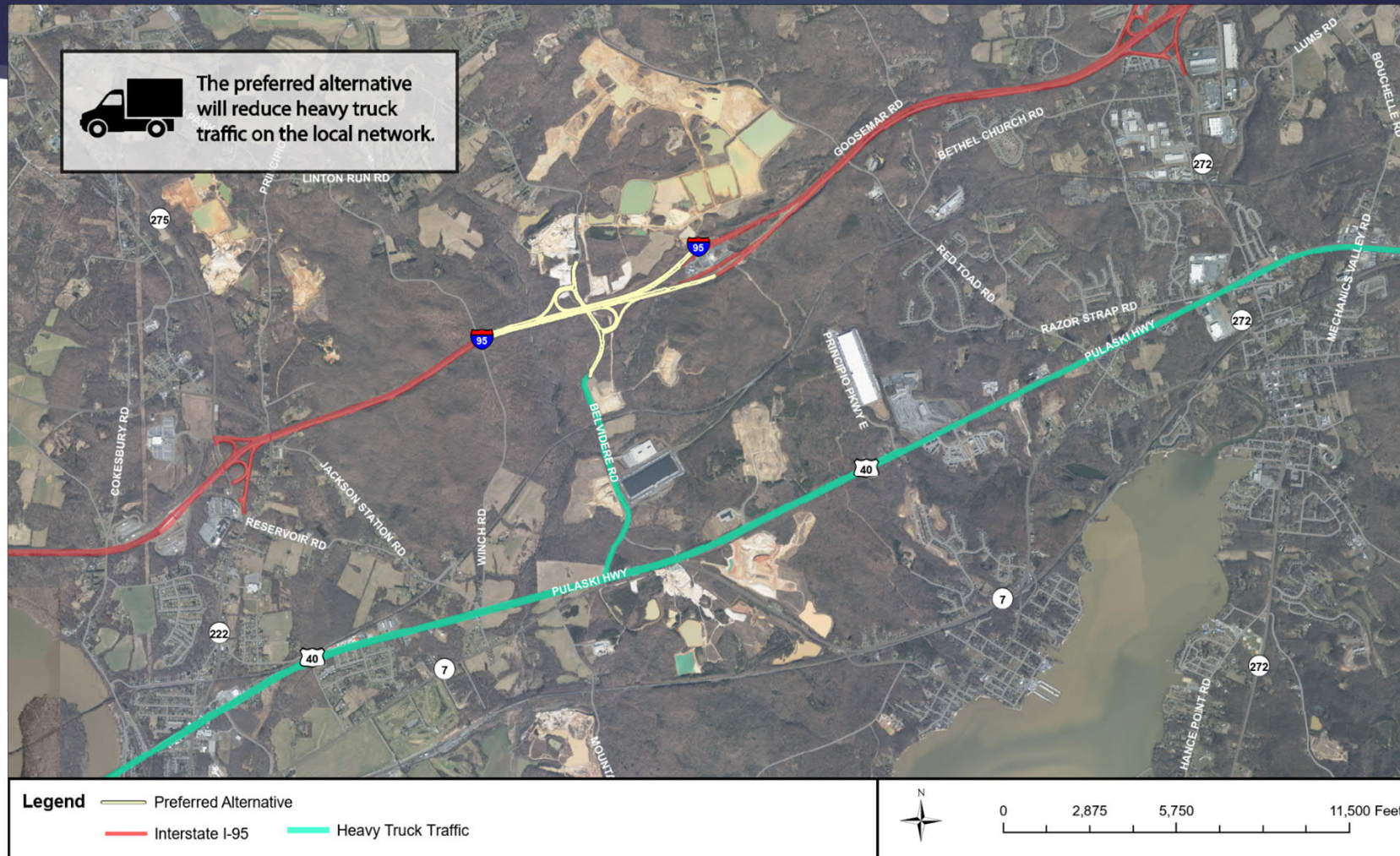
Proposed Development



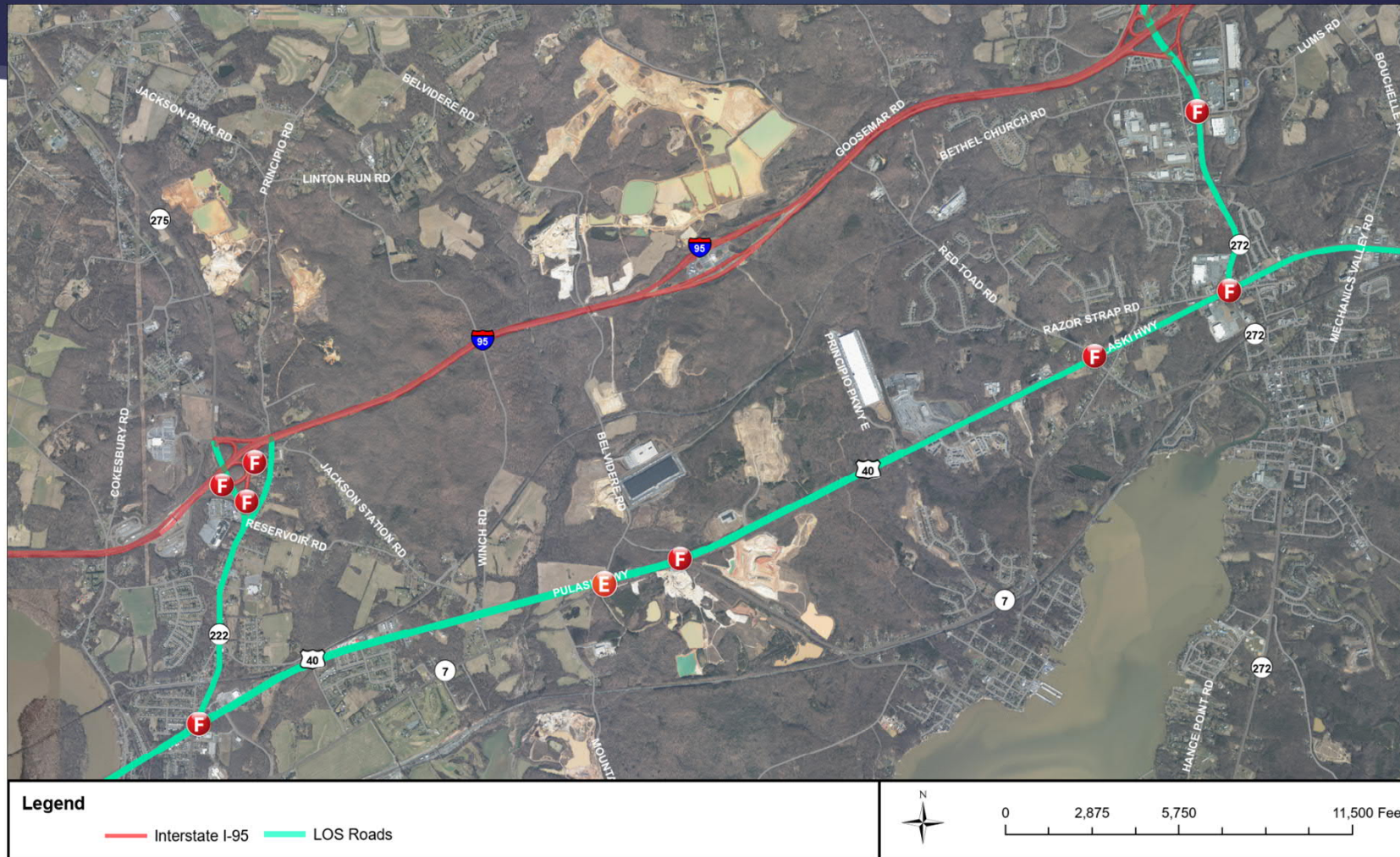
Truck Traffic w/2040 No-Build Alternative



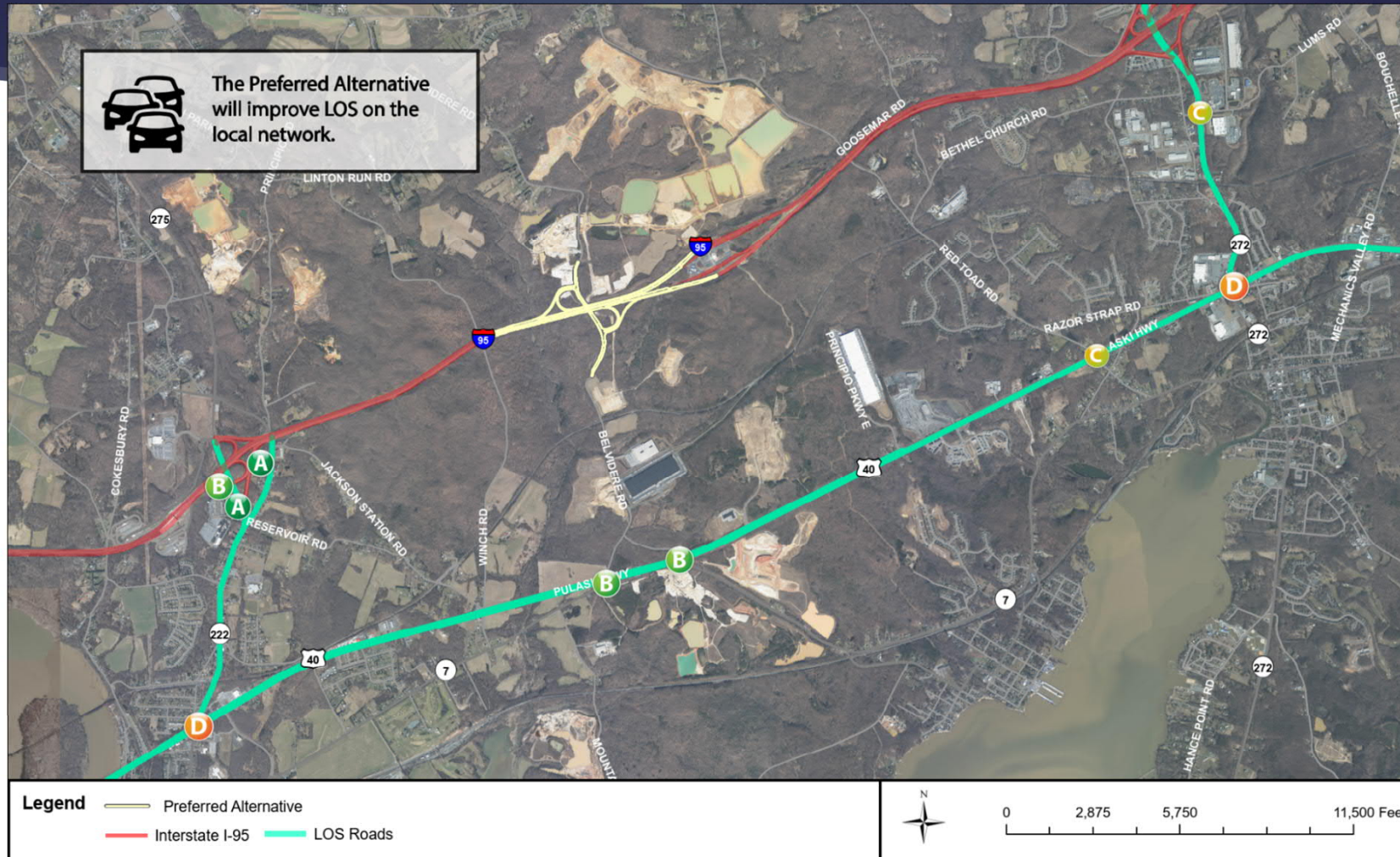
Reduced Truck Traffic w/2040 Preferred Alternative



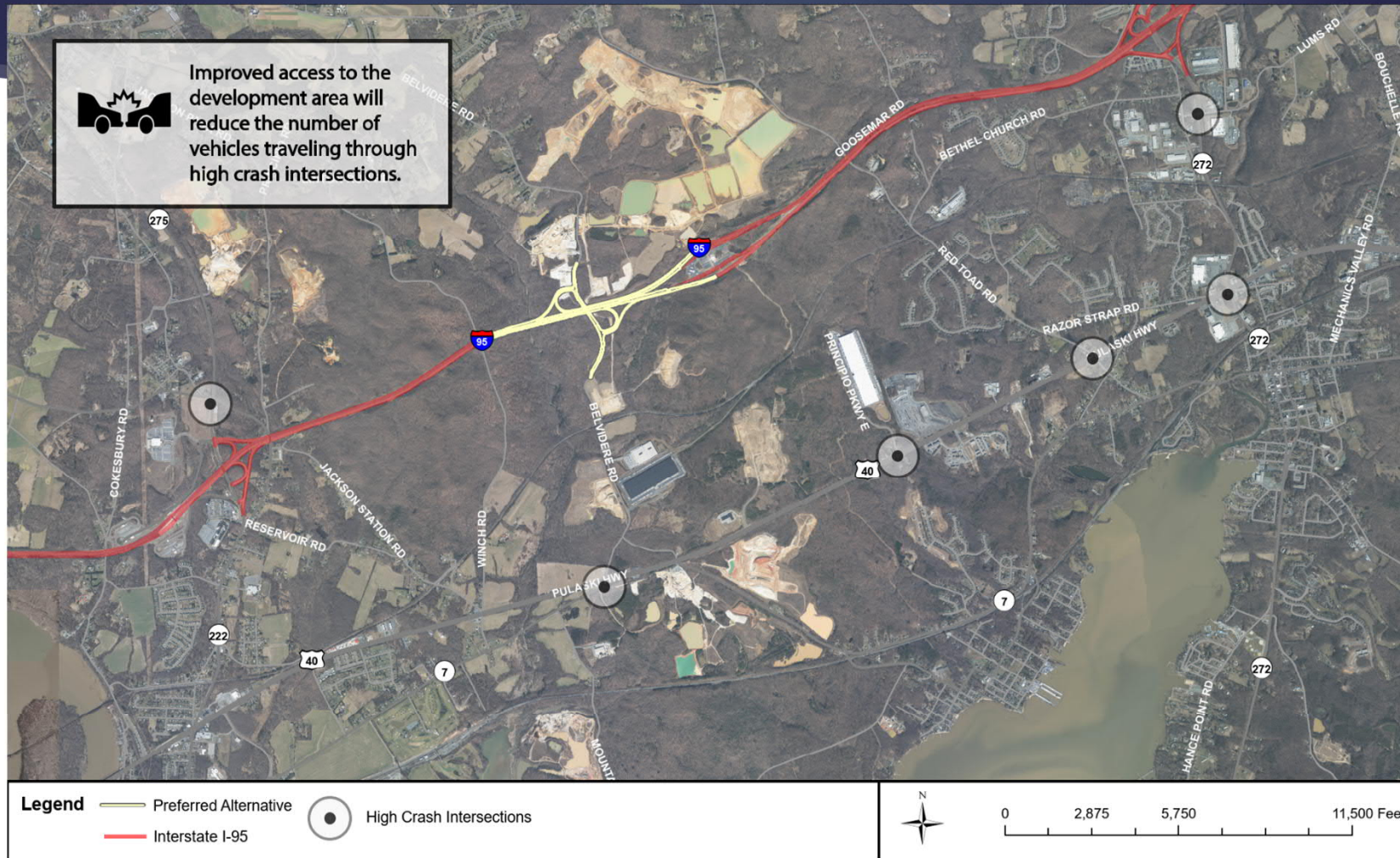
Level of Service w/2040 No-Build Alternative



Level of Service w/2040 Preferred Alternative



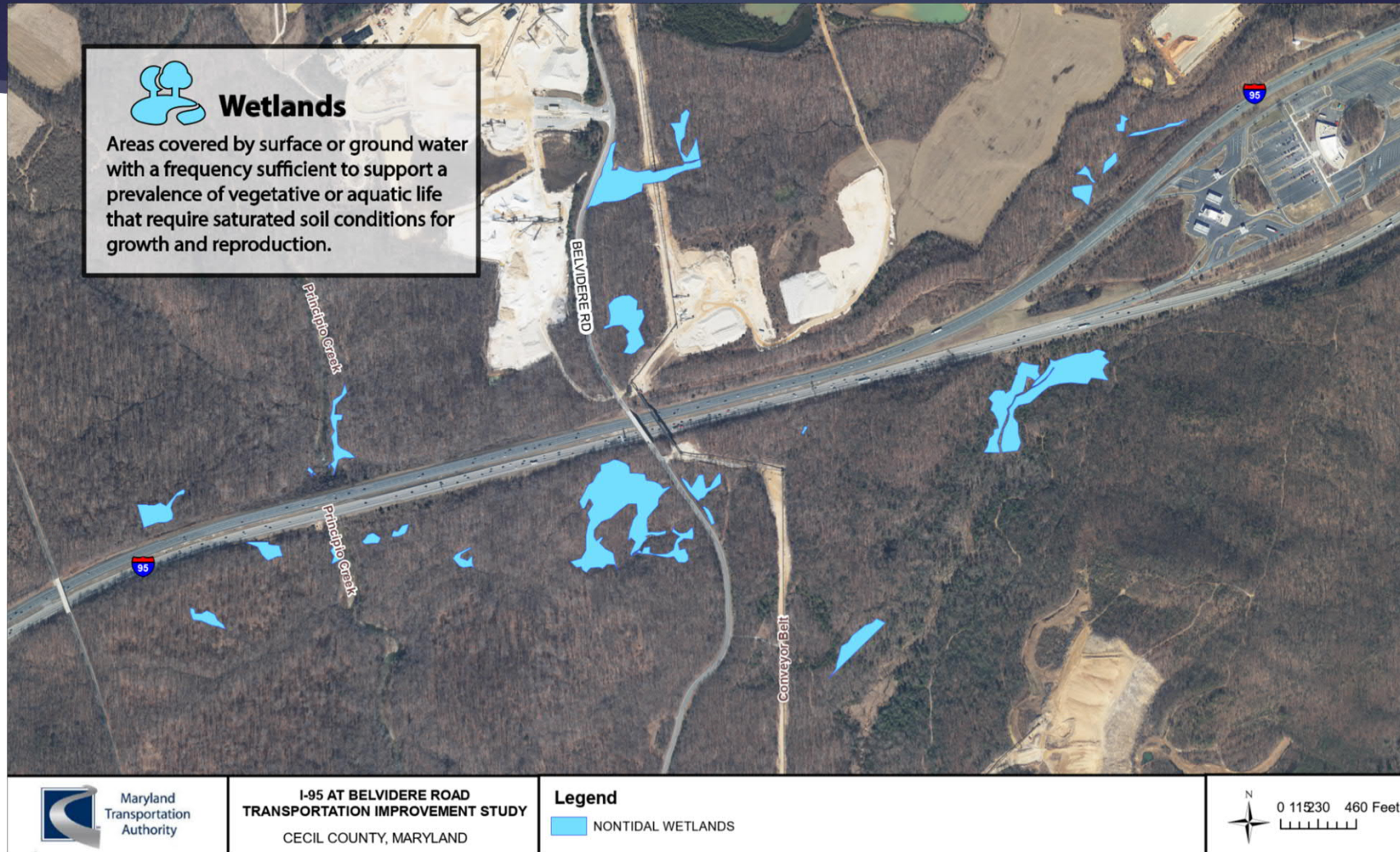
High Crash Intersections



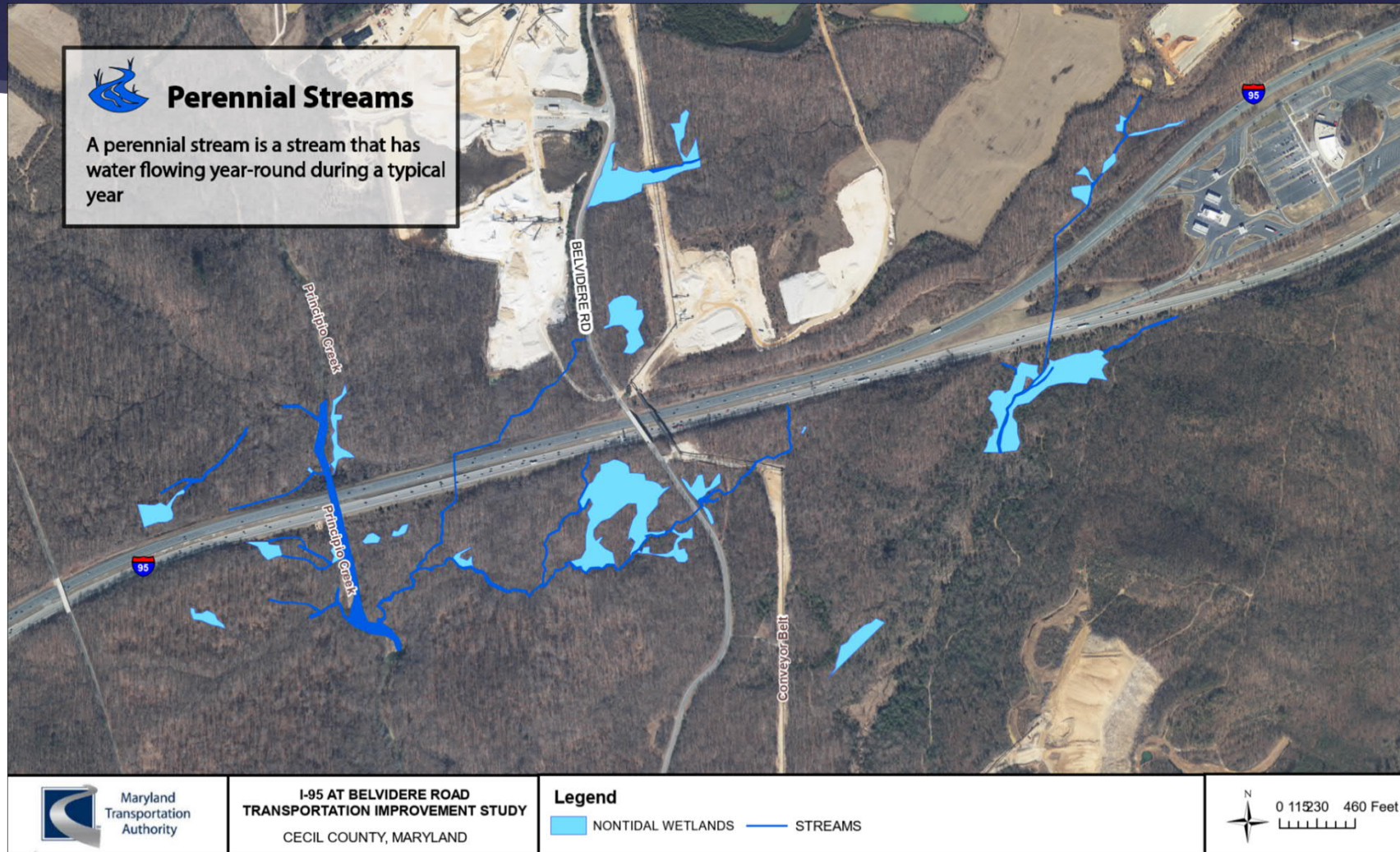
Environmental Documentation

- ▶ The Preferred Alternative will mainly involve impacts associated with Traffic & Transportation, Natural & Environmental Resources, and Construction. As the project progresses, we will continue to evaluate opportunities to avoid, minimize and mitigate impacts to these important resources and the cumulative results of these investigations will help us, in coordination with the Federal Highway Administration (FHWA), complete the environmental documentation for the project.

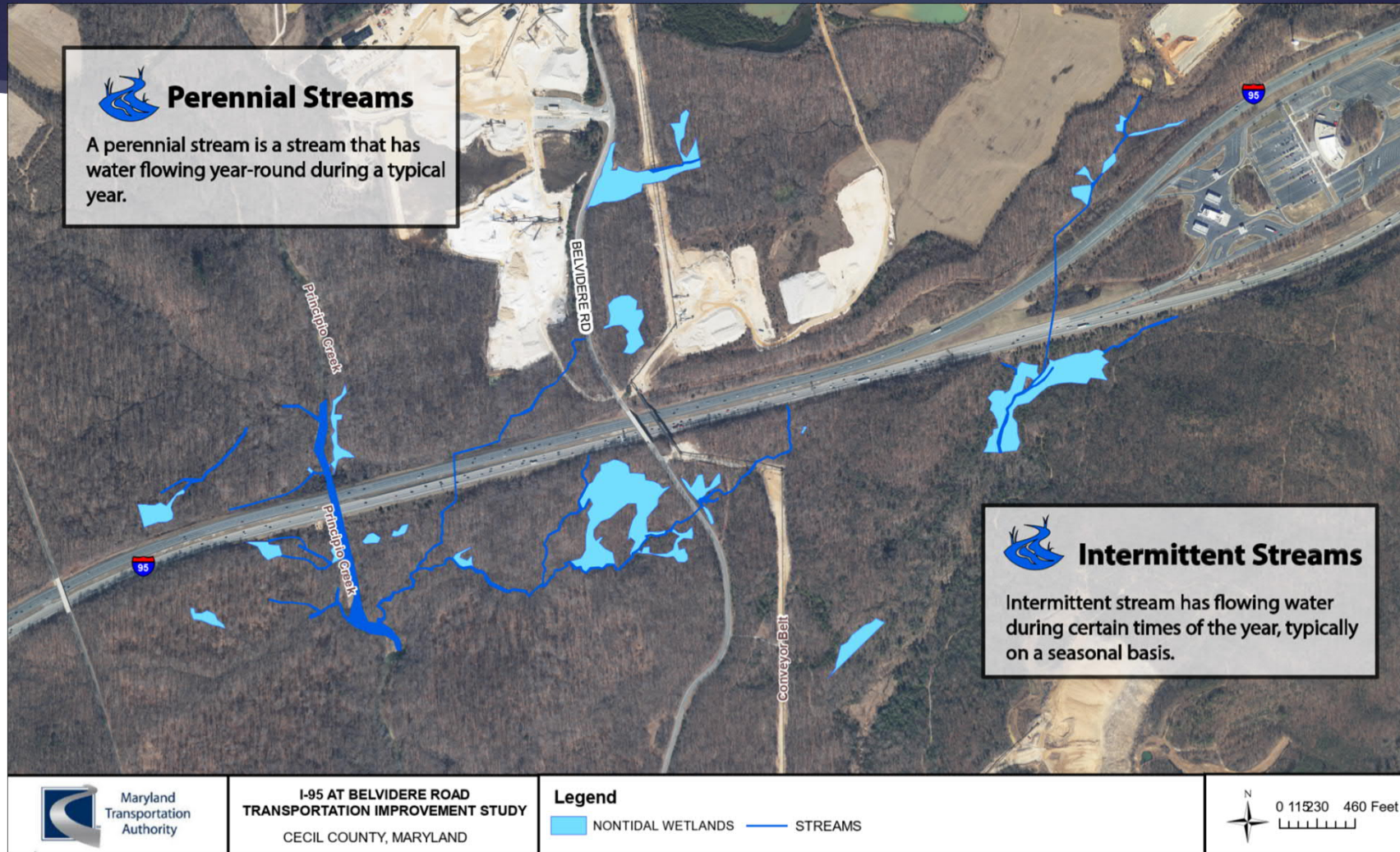
Environmental Consideration - Wetlands



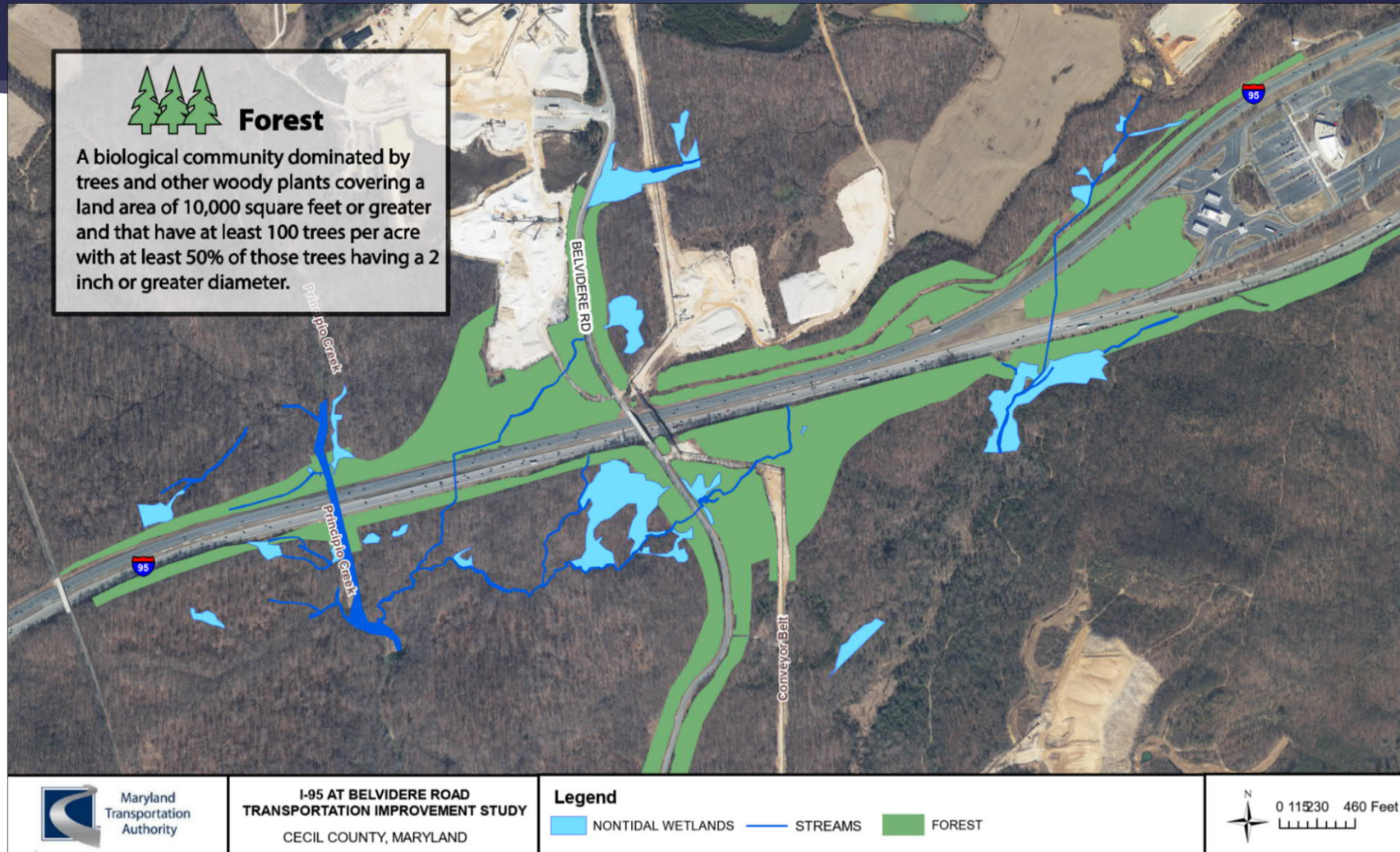
Environmental Consideration - Streams



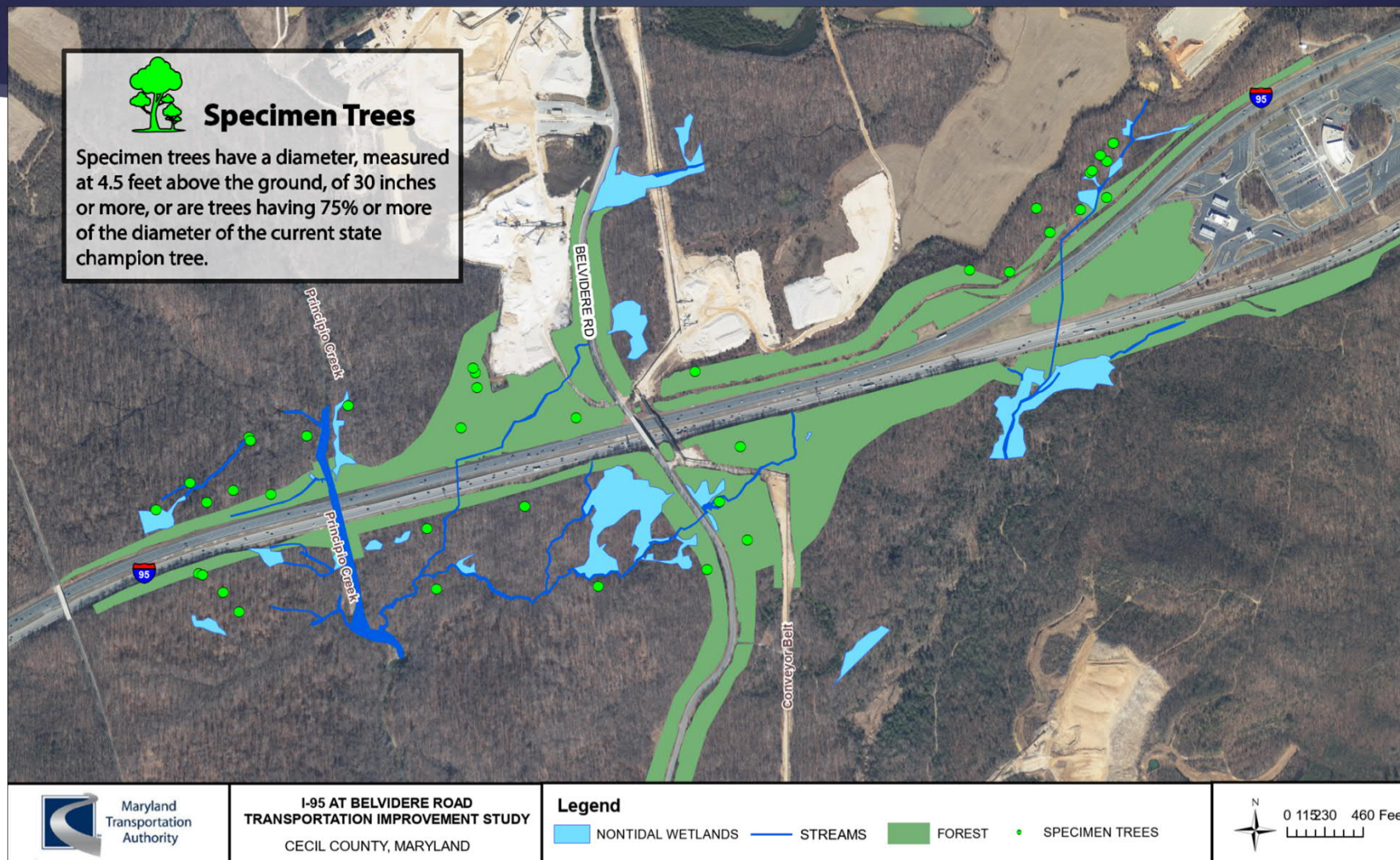
Environmental Consideration - Streams



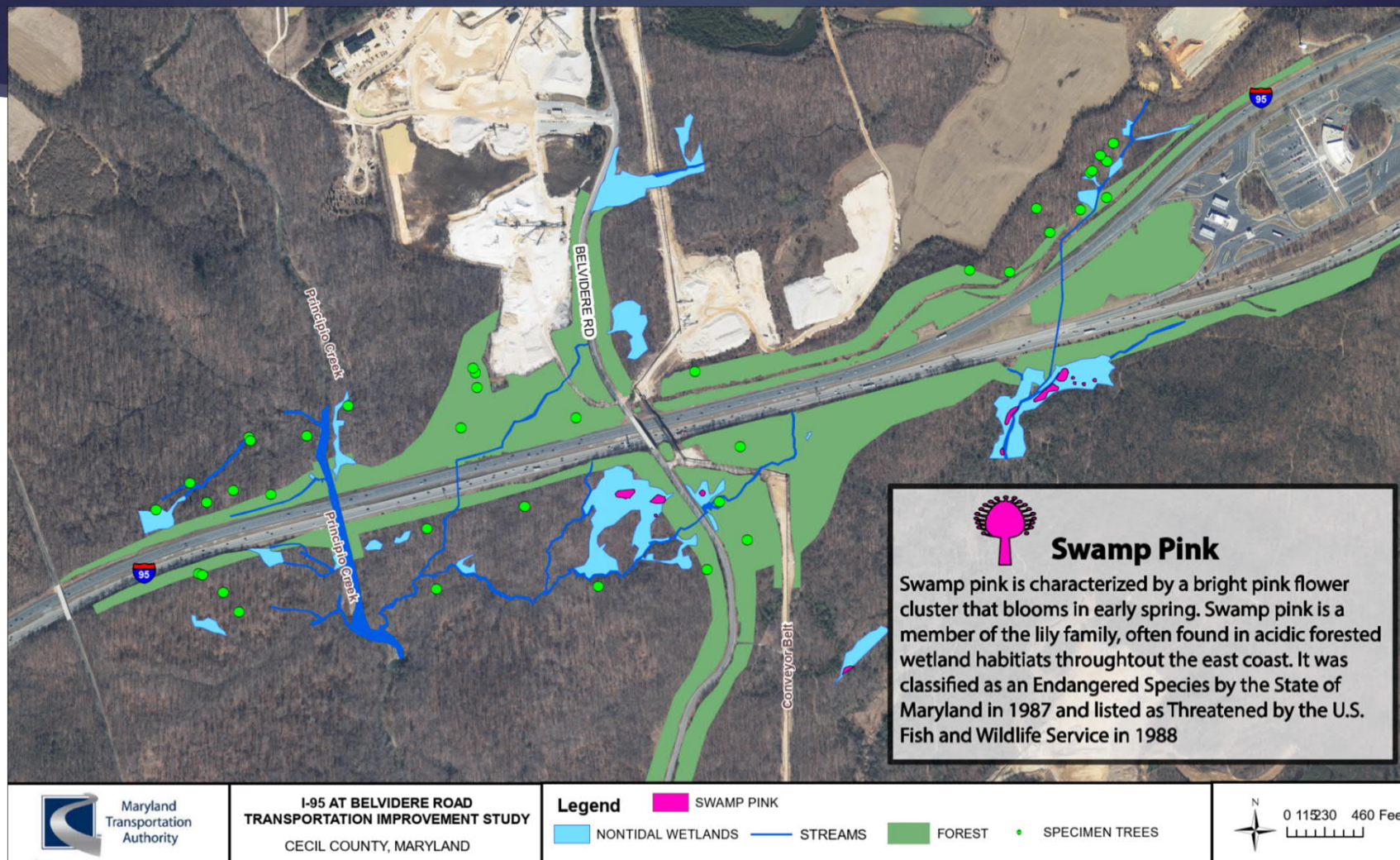
Environmental Consideration - Forest




Environmental Consideration – Specimen Trees

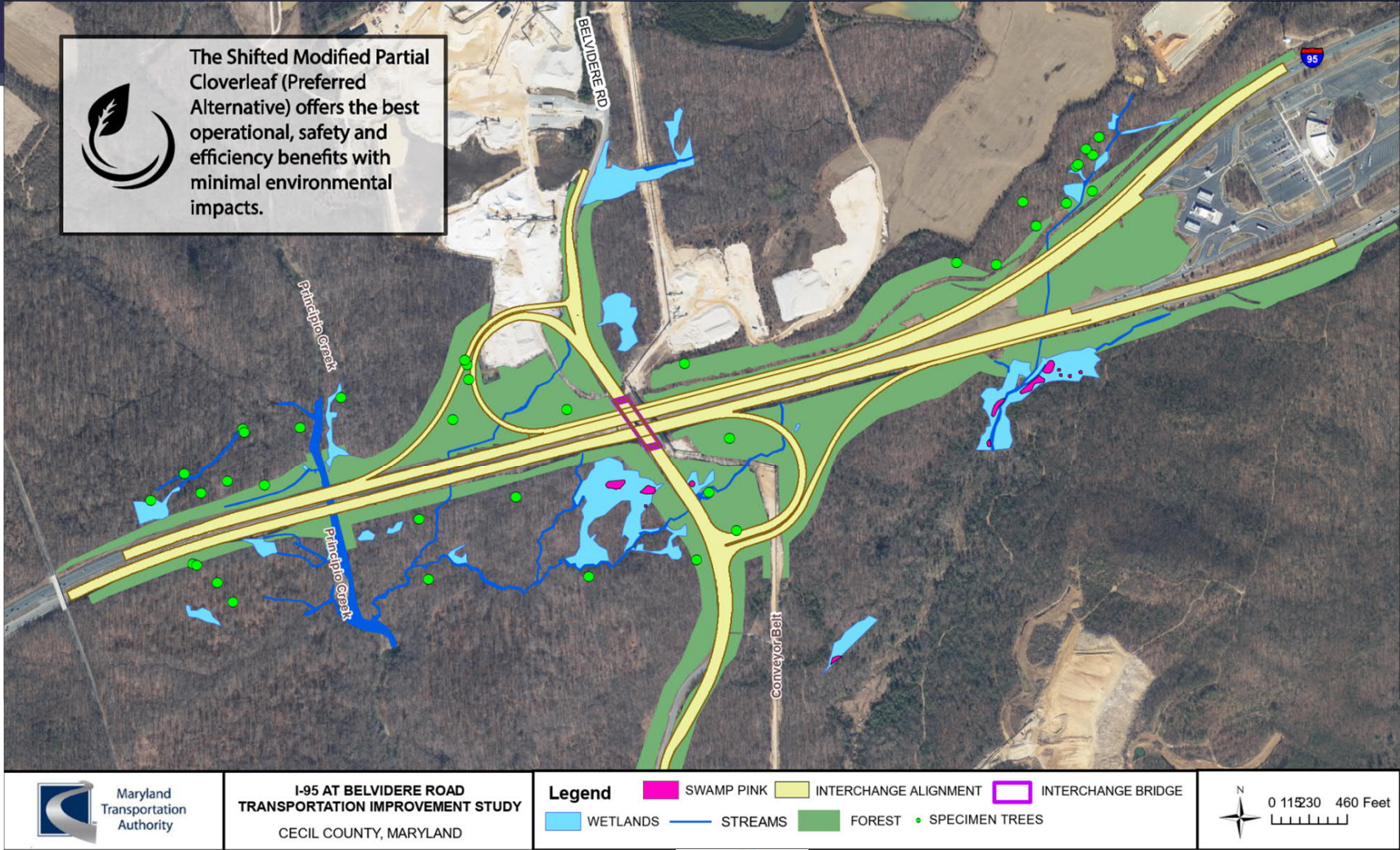


Environmental Consideration – Swamp Pink



Environmental Benefits

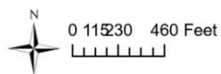

 The Shifted Modified Partial Cloverleaf (Preferred Alternative) offers the best operational, safety and efficiency benefits with minimal environmental impacts.



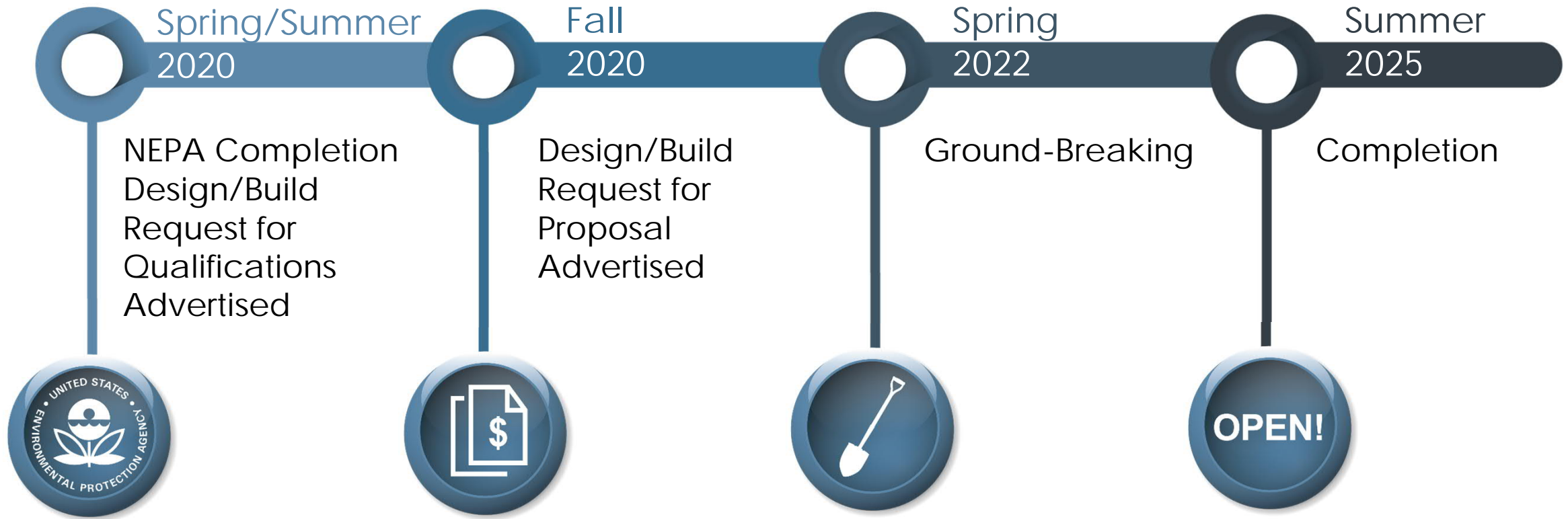
I-95 AT BELVIDERE ROAD
TRANSPORTATION IMPROVEMENT STUDY
 CECIL COUNTY, MARYLAND

Legend
 SWAMP PINK
 INTERCHANGE ALIGNMENT
 INTERCHANGE BRIDGE

WETLANDS
 STREAMS
 FOREST
 SPECIMEN TREES



Schedule



Stay Connected

The Maryland Transportation Authority and Federal Highway Administration would like to thank you for your interest in the I-95 at Belvidere Road Transportation Improvement Virtual Project Update.

Mr. Carl Chamberlin
Project Manager
Division of Planning and Program
Development
Maryland Transportation Authority
2310 Broening Highway
Baltimore, MD 21224
410-537-5651

Ms. Melissa Bogdan
Community Relations
Division of Planning and Program
Development
Maryland Transportation Authority
2310 Broening Highway
Baltimore, MD 21224
410-537-5675

I-95BelvidereRdStudy@mdta.maryland.gov