



# **WELCOME**

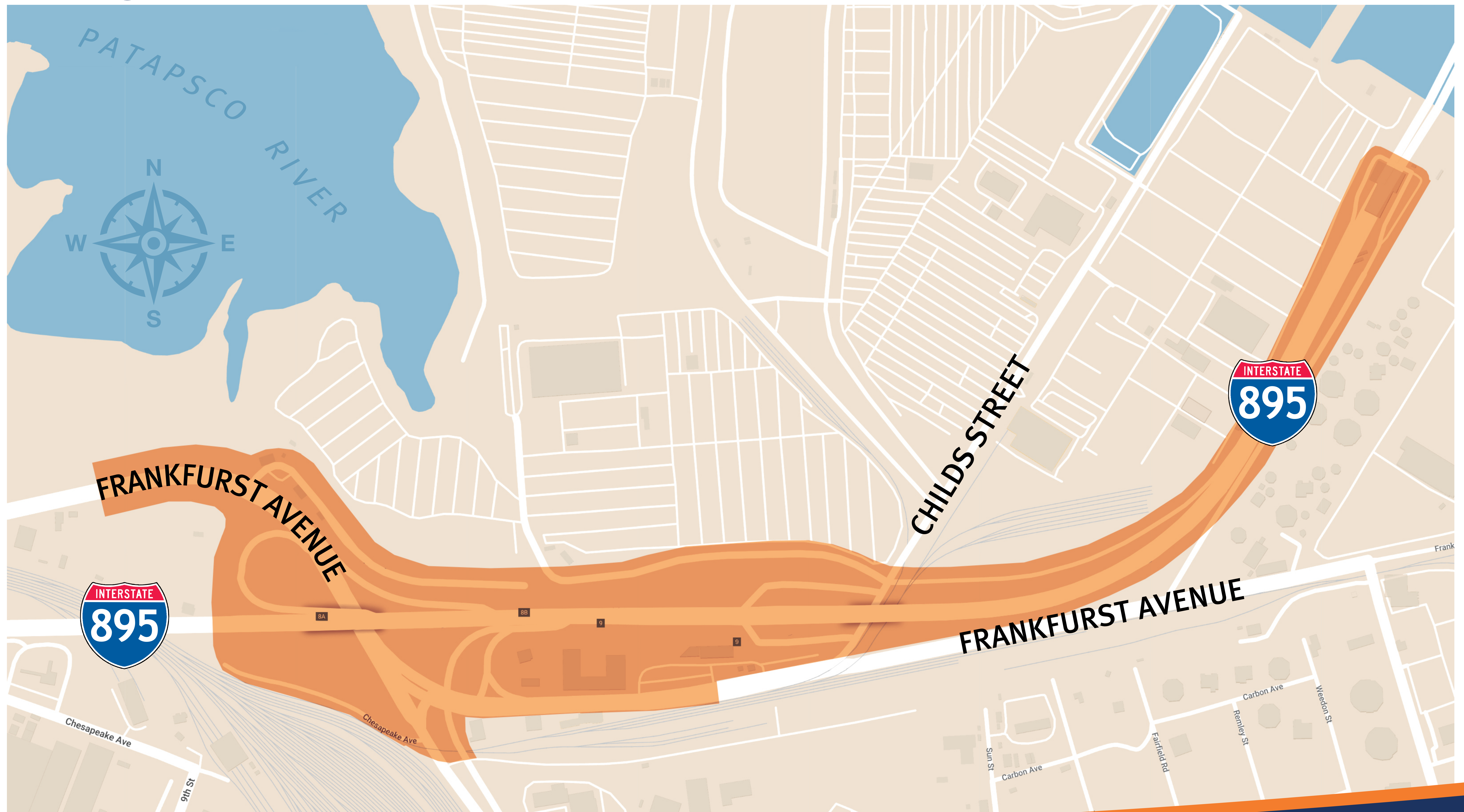
## **to the Informational Open House**





# I-895 AT FRANKFURST AVENUE INTERCHANGE IMPROVEMENTS PROJECT

## Project Limits







## Purpose and Need

- To complete MDTA's conversion of toll plazas to highway speed all electronic tolling
- Aging structures are in need of replacement
- Roadway pavement near the toll plaza is in need of major reconstruction



## Project Benefits

- Improve safety for motorists and reduce crashes
- Foster regional economic growth via more efficient commuting and increased freight travel productivity
- Reduce congestion and emission related air pollution for the nearby Brooklyn and Curtis Bay communities
- Bring MDTA assets into a state of good repair





# I-895 AT FRANKFURST AVENUE INTERCHANGE IMPROVEMENTS PROJECT

## Anticipated Schedule







# I-895 AT FRANKFURST AVENUE INTERCHANGE IMPROVEMENTS PROJECT

## Existing I-895 Interchange







## Work Being Performed

Phase 1 (August 2024 - Summer 2025)

- Construct new I-895 toll gantry on I-895 north of the Harbor Tunnel
- Construct new toll gantries on the access ramps from Childs Street





# I-895 AT FRANKFURST AVENUE INTERCHANGE IMPROVEMENTS PROJECT

## Phase 1: Childs Street Toll Gantry







# I-895 AT FRANKFURST AVENUE INTERCHANGE IMPROVEMENTS PROJECT

## Proposed Overhead Toll Collection Gantry - North of Harbor Tunnel







## Work Being Performed

Phase 2 (Fall/Winter 2026 - Winter 2028)

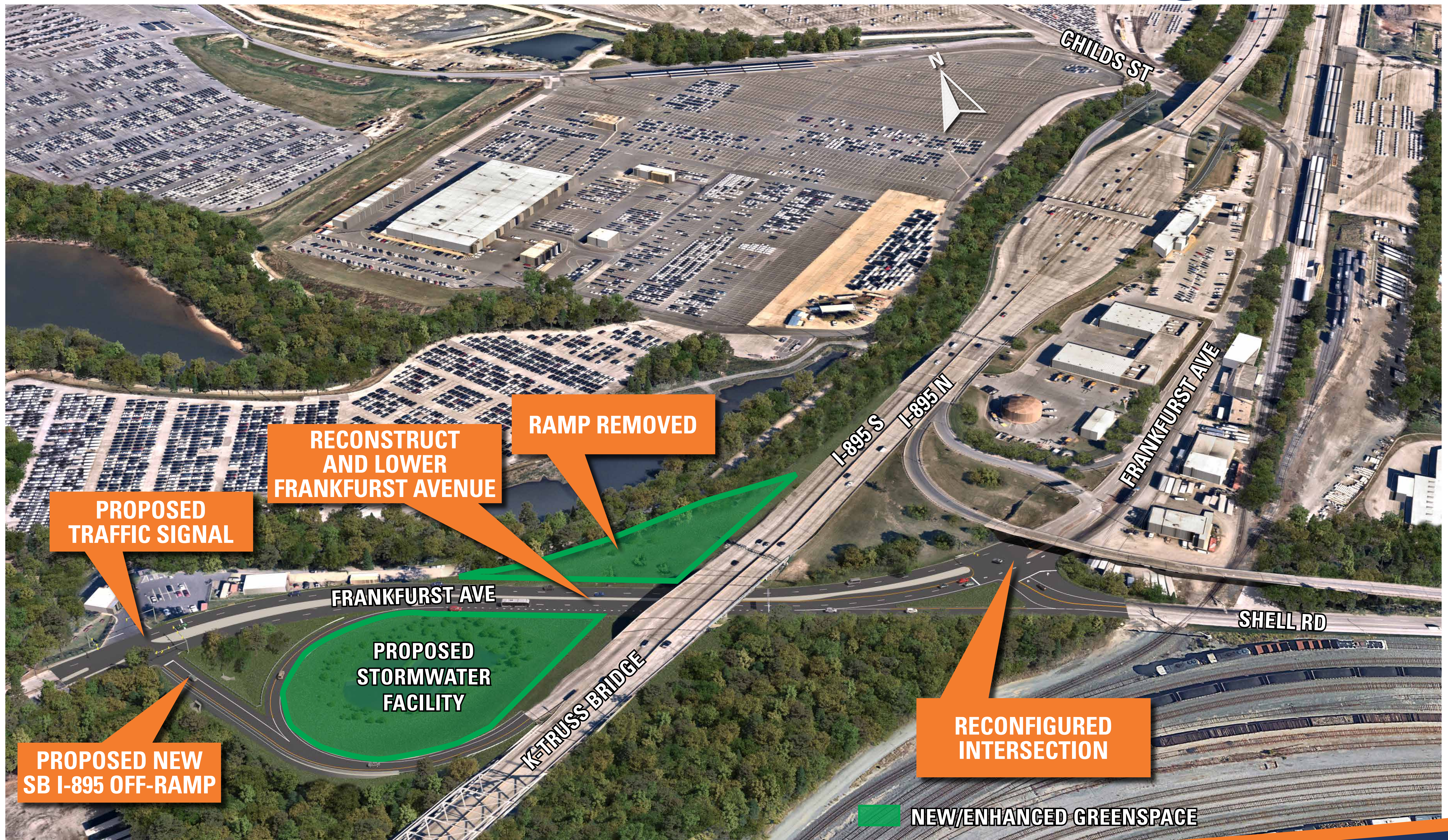
- Reconstruct Frankfurst Avenue
- Reconfigure Frankfurst Avenue and Shell Road intersection
- Install new traffic signal at the intersection of Frankfurst Avenue and the Masonville Cove Environmental Education Center
- Consolidate southbound I-895 off ramps to Frankfurst Avenue





# I-895 AT FRANKFURST AVENUE INTERCHANGE IMPROVEMENTS PROJECT

## Phase 2: Frankfurst Avenue Reconfiguration







## Work Being Performed

### Phase 3 (2029 - 2031)

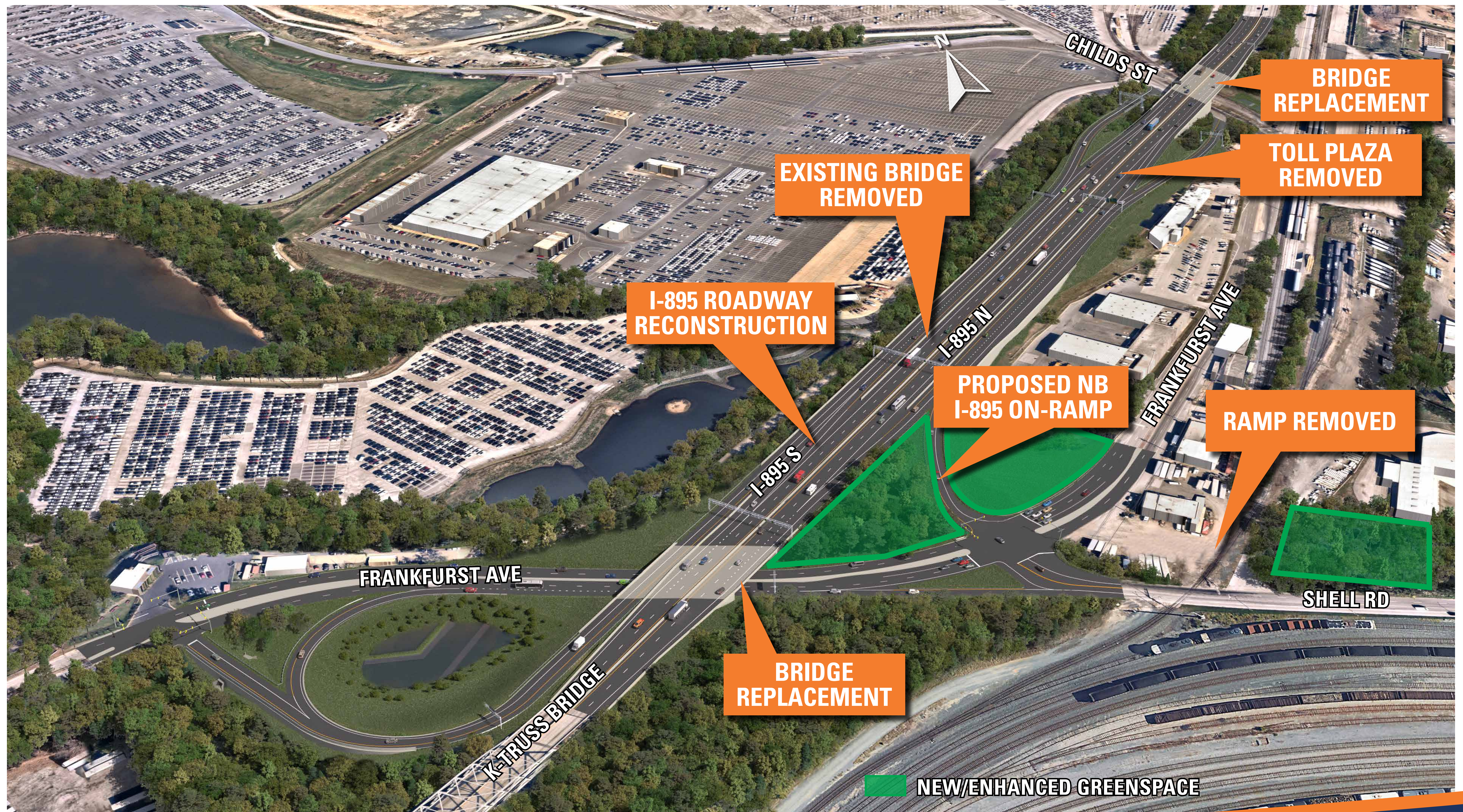
- Remove the Baltimore Harbor Tunnel toll plaza
- Consolidate I-895 northbound access ramps from Frankfurst Avenue and Shell Road
- Realign access ramps to I-895 from Childs Street
- Rehabilitate pavement on I-895
- Replace I-895 bridges at Frankfurst Avenue and Childs Street
- Remove the bridge over the maintenance yard
- Remove the Shell Road on-ramp to northbound I-895





# I-895 AT FRANKFURST AVENUE INTERCHANGE IMPROVEMENTS PROJECT

## Phase 3: Final I-895 Bridge Replacement and Configuration







## What Drivers Need to Know

### Phase 1

**August 2024 - Summer 2025**

- Night and weekend closures of Childs Street on and off ramps at various times
- Night lane or tunnel closures on I-895 at various times

### Phase 2

**Fall/Winter 2026 - Winter 2028**

- Frankfurst Avenue will be reduced to one lane in each direction for most of the construction duration

### Phase 3

(After the rebuilt Key Bridge is open to traffic)


**2029 - 2031**

- I-895 will be reduced to one lane in each direction for up to 12 months
- Night and off-peak lane and shoulder closures on I-895
- Frankfurst Avenue will be reduced to one lane in each direction for most of the construction duration





## Expect Longer Rush-Hour Periods & Delays



**Baltimore Commuters: Expect Delays.**

**Plan ahead.**

Help reduce the impact of the Key Bridge closure.

### Heavy Commute Times Southbound

<b>MONDAY - THURSDAY</b> 6 - 10 a.m. 4 - 6 p.m.	<b>FRIDAY</b> 7 - 9 a.m. 2 - 6 p.m.
---	---

### Heavy Commute Times Northbound

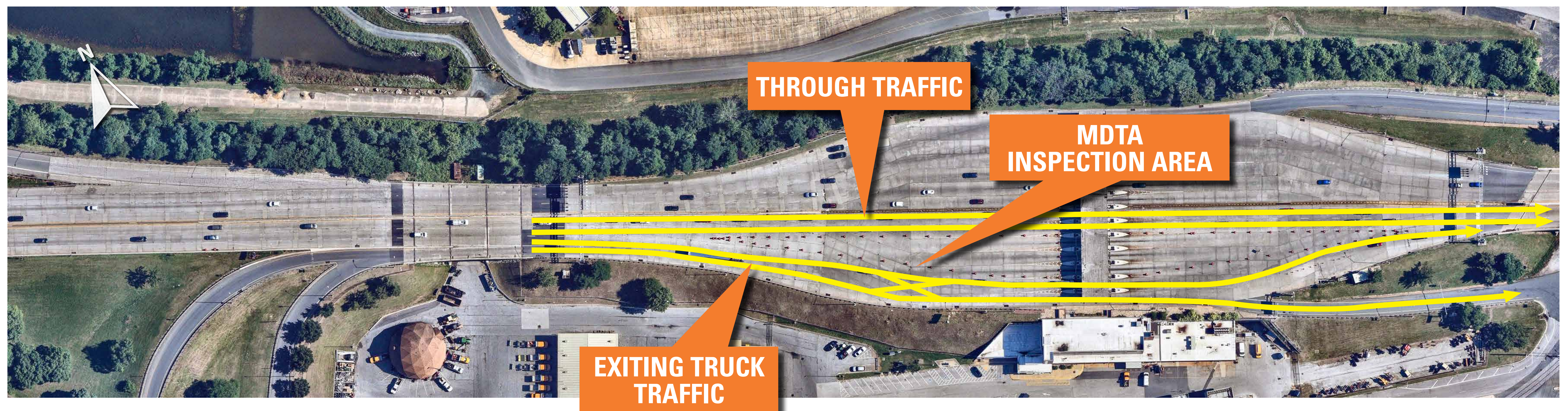
<b>MONDAY - THURSDAY</b> 2 - 7 p.m.	<b>FRIDAY</b> 12 - 7 p.m.
--	------------------------------

<https://mdta.maryland.gov/HarborCrossings>





## What is MDTA Doing to Minimize Traffic Effects?



### I-895 Traffic Management

- Reduced merging conflicts across toll plaza
- Collecting feedback to make adjustments
- Evaluating impact of future planned construction





# I-895 AT FRANKFURST AVENUE INTERCHANGE IMPROVEMENTS PROJECT

## Old Pennington Avenue Permanent Rail Crossing Closure











## Title VI

### What is Title VI?

- Title VI of the Civil Rights Act of 1964 provides that no person shall on the ground of race, color, national origin, sex, English proficiency, or disabilities be excluded from participation in, be denied the benefits of, or be subjected to discrimination under any program or activity.

**Should you need LEP assistance or if you believe the MDTA is not meeting the expectations of Title VI, you may direct questions, concerns, or file a complaint with:**

**Maryland Transportation Authority  
Office of Equal Opportunity  
2310 Broening Highway  
Baltimore, MD 21224  
410-537-5660 (Direct) | MD Relay: 7-1-1  
MDTAeeo@MDTA.state.md.us**

### Why is Title VI Important?

- Title VI ensures that public services, including transportation, are provided in an equitable and nondiscriminatory manner.
- Title VI provides opportunities for public participation in decision-making without regard to race, color, or national origin, including populations with Limited English Proficiency (LEP).

**Please Fill Out a Survey by Clicking or Scanning the QR Code Below.**

**The MDTA strives to involve all groups relevant to this project in its public involvement activities. Please fill out a Demographic Information Survey to assist the MDTA in planning outreach to communities during construction.**







## We want to hear from you

Please submit your questions or comments via:



Email [I895tollplaza@mdta.maryland.gov](mailto:I895tollplaza@mdta.maryland.gov)



Call **(800) 851-1060**



Comment forms available:

At today's Informational Open House

Project Website [mdta.maryland.gov/I895TollPlaza](https://mdta.maryland.gov/I895TollPlaza)

***Comment period regarding the proposed railroad crossing closures ends February 28, 2025.***





# I-895 AT FRANKFURST AVENUE INTERCHANGE IMPROVEMENTS PROJECT

## Stay Informed

Sign up for email alerts at



[mdta.maryland.gov/I895TollPlaza](https://mdta.maryland.gov/I895TollPlaza)



View real-time traffic camera images on MDTA roadways at [mdta.Maryland.gov](https://mdta.Maryland.gov).

