

Overnight deck work beginning Spring 2024

BAY BRIDGE EASTBOUND DECK REPLACEMENT PROJECT

Work will be done during off-peak & overnight hours.



CONSTRUCTION SEQUENCE 3: STRUCTURAL REHABILITATION OF STEEL SUPERSTRUCTURE

Construction is underway for the rehabilitation of the Eastbound Bay Bridge deck trusses. The new deck trusses will improve load carrying capacity and enhance the structure's ability to efficiently withstand the loads of the widened roadway deck and the heavy trucks that cross the bridge. The rehabilitation of the deck trusses will also extend the service-life of the truss members.

Truss member rehabilitating includes:

- rehabilitating 72 truss members by installing 584 steel plates, and
- using approximately 117 tons of steel and over 31,000 high-strength bolts.

Truss gusset plate rivet replacements includes:

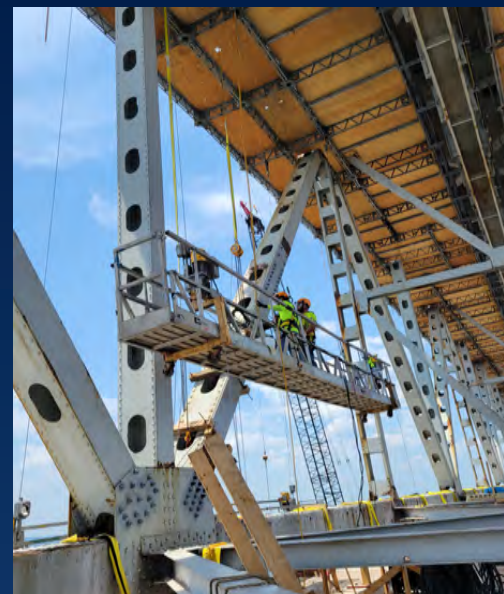
- replacing 19,112 rivets at over 256 gusset plate locations, and
- using high-strength bolts to improve load carrying capacity.

To sign-up for public and mariner alerts, visit www.baybridge.com.

The MDTA thanks the public for their patience as the Eastbound Bay Bridge deck is replaced.

Driver's Note: With major overnight and off-peak work expected to start spring 2024 for the Eastbound Bay Bridge Deck Replacement project, cranes began to arrive spring 2023 and are staged near the bridge span. **Drivers will be able to see the cranes when crossing the bridge and MUST pay attention to the road ahead and obey overhead lane use signals at all times.**

- **Keep your eyes on the road.**
- **Obey posted speed limits.**
- **Stay alert and adhere to overhead lane-use signals.**



The Maryland Transportation Authority (MDTA) is replacing the 40-year-old deck on the Eastbound William Preston Lane, Jr. Memorial Bridge (Bay Bridge). Major construction for this portion of Phase 1 is expected to begin in spring 2024 with anticipated completion in spring 2025. The majority of the work will take place during off-peak and overnight hours. The MDTA has designed the project to limit traffic impacts while maximizing safety for our contractors and customers.

This project will:

- extend the service life of the existing Eastbound Bay Bridge deck,
- improve the overall ride quality and safety of the Eastbound Bay Bridge, and
- minimize traffic impacts by replacing the deck in sections without the need for 24/7 closures.