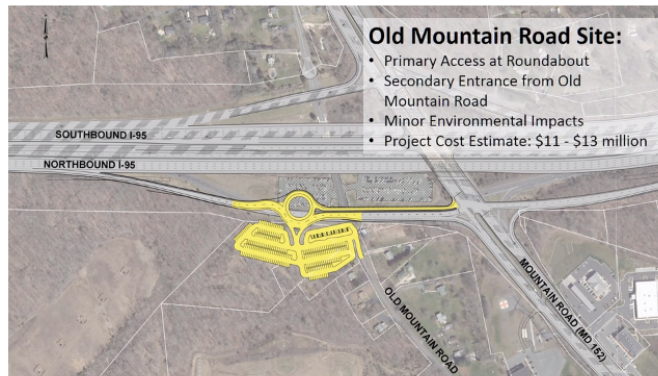




Old Mountain Road Option for new MD 152 Park and Ride Moves Forward

A Virtual Public Meeting was held on June 11, 2020, to discuss the options under consideration for the MD 152 Park and Ride. **Based on additional technical analysis and input from the public, a determination has been made to move forward with the Old Mountain Road location and to drop the Franklinville Road site location.**



The existing MD 152 Park and Ride facility has 309 spaces and is highly used today. The park and ride will be impacted by the interchange improvements proposed as part of the I-95 Express Toll Lanes (ETL) Northbound Extension program and cannot remain in its current location. The existing MD 152 Park and Ride will be closed when construction begins on the MD 152 interchange improvements, which are anticipated to begin in Winter 2021/2022.

At the Virtual Public Meeting, three options were discussed for a park and ride along MD 152:

- **No Build Option:** A No-Build Option would not build a new park and ride and therefore there would be no replacement of the existing park and ride lot once it was removed
- **Franklinville Road Option:** The Franklinville Road Option proposed a park and ride located near the intersection of MD 152 and Franklinville Road.
- **Old Mountain Road Option:** The Old Mountain Road Option proposed a park and ride located near the existing park and ride location with access from a newly constructed roundabout that is proposed within the interchange reconfiguration.

93 individuals attended the June 11 Virtual Public Meeting and comments were received through e-mail in advance of and after the meeting, during the meeting, and through completion of the comment form associated with the meeting.

Please visit <https://mdta.maryland.gov/I95ETLNB/home.html> to learn more about the project.