



I-95 Express Toll Lanes Northbound Extension

Traffic Advisory Fall 2022

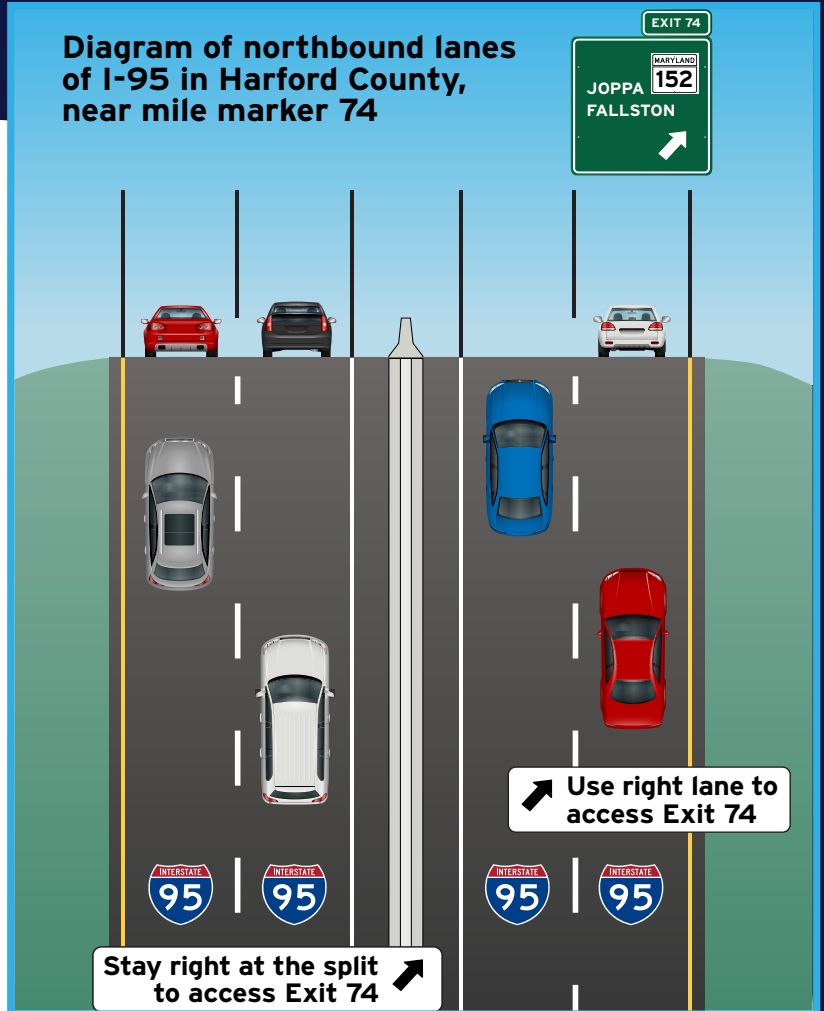
Split Traffic Pattern on Northbound I-95 between Mile Marker 73 and Mile Marker 75

As part of the Maryland Transportation Authority's (MDTA) ongoing \$1.1 billion program to relieve congestion and improve travel along I-95 between Baltimore and Harford counties, northbound I-95 at the MD 152 interchange (Exit 74) will shift to a new traffic pattern. Anticipated to begin in early December (weather dependent), and continuing through June 2023, traffic will split with two lanes to the left and two lanes to the right of the work zone separated by barrier on northbound I-95 between mile marker 73 and mile marker 75. The split pattern will allow crews a safe work zone to continue construction of the new MD 152 overpass as part of the overall reconstruction of the I-95/MD 152 interchange.

Motorists exiting at MD 152/Mountain Road (Exit 74) MUST stay in the right two lanes as they approach mile marker 73. Northbound I-95 access will continue from all four travel lanes within the split pattern.

Temporary signs will be installed to direct motorists approaching the traffic split. The MDTA reminds drivers to plan ahead and travel off-peak to avoid delays as this critical work continues. Traffic delays are typical in this area during afternoon peak periods. On average, motorists historically experience northbound Friday afternoon travel delays up to 20 minutes with queues up to nine miles.

Diagram of northbound lanes of I-95 in Harford County, near mile marker 74

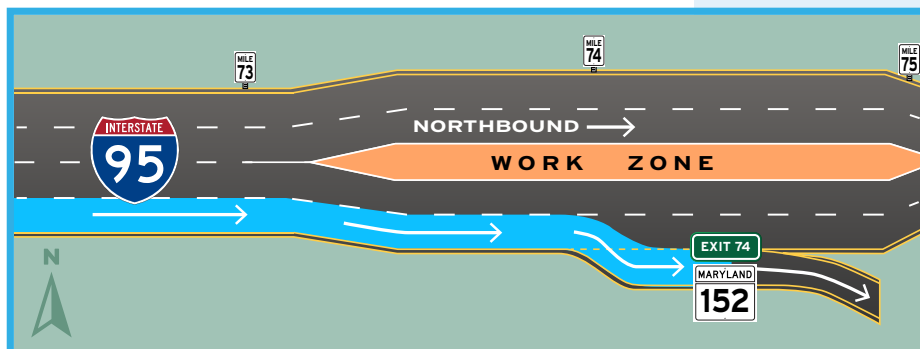


WHAT TO EXPECT DURING CONSTRUCTION

Ground-mounted roadway signs and portable changeable message signs will inform motorists of the new traffic pattern prior to the switch. Due to the new traffic pattern, motorists should use extra caution while approaching the area. Stay up-to-date on this switch and other traffic changes and ramp openings along I-95.

■ Visit mdta.maryland.gov/I95ETLNB/home.html

- ✓ Access the latest traffic advisories
- ✓ Get construction updates
- ✓ Send us your comments or questions
- Check out current traffic conditions at traffic.md.gov



For more information, visit mdta.maryland.gov/I95ETLNB/home.html



Maryland Transportation Authority

