



I-95 EXPRESS TOLL LANES (ETL) NORTHBOUND EXTENSION



I-95 ETL Northbound Extension Program MD 24 Northbound Auxiliary Lane Through Singer Road Intersection

Virtual Public Meeting February 4, 2021

mdta.maryland.gov/I95ETLNB/home.html

I95ETLNB@mdta.maryland.gov



Title VI Compliance

- Title VI of the Civil Rights Act of 1964 provides that no person shall on the grounds of race, color, national origin, sex, English proficiency, or disabilities be excluded from participation in, be denied the benefits of, or be subjected to discrimination under any program or activity.
- Title VI ensures that public services, including transportation, are provided in an equitable and nondiscriminatory manner.
- Title VI also provides opportunities for public participation in decision-making without regard to race, color, or national origin, including populations with Limited English Proficiency (LEP).

Should you need LEP assistance or if you believe MDTA is not meeting the expectations of Title VI, you may direct questions, concerns, or file a complaint with:

Ms. Sherrie Davis, Title VI LEP Program Coordinator

Division of Civil Rights and Fair Practices (CRFP)

Maryland Transportation Authority

2310 Broening Highway



Baltimore, MD 21224

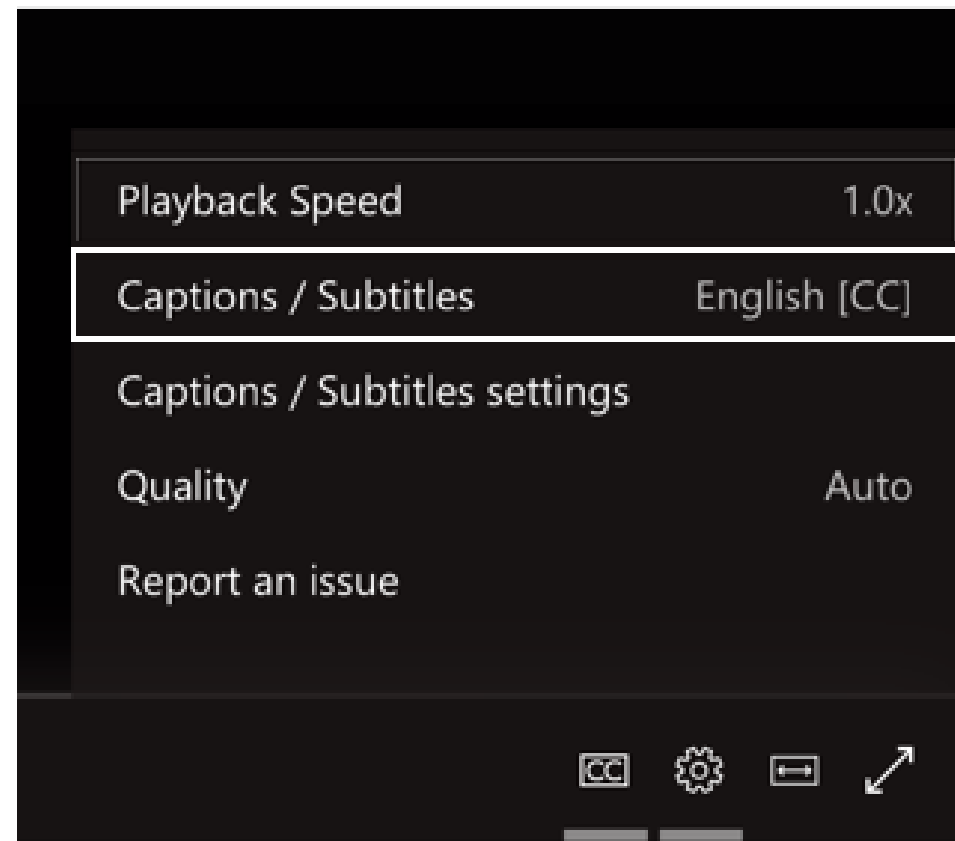
Email: sdavis18@mdta.state.md.us

Phone: 410-537-6714



Closed Captioning is Available for Tonight's Virtual Public Meeting

- To turn on live captions and subtitles, select **Captions/Subtitles On**  in your video controls.
- To change the caption language, select **Settings**  > **Captions/Subtitles**, and choose the language you want.





I-95 EXPRESS TOLL LANES (ETL) NORTHBOUND EXTENSION




James Harkness, PE, PTOE
Chief Engineer
Maryland Transportation Authority

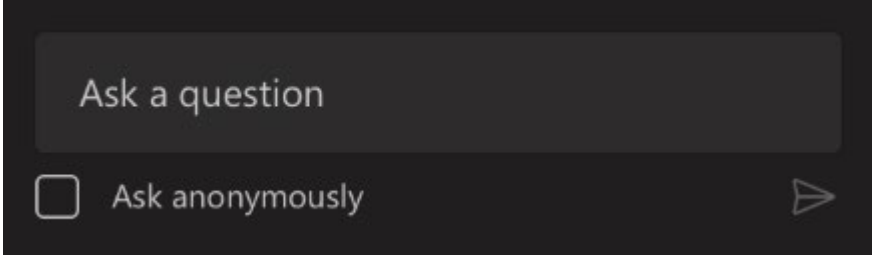


Brian Wolfe, PE
Director of Project Development
Maryland Transportation Authority



Asking Questions at Tonight's Virtual Public Meeting

- Select **Q&A**  on the right side of the screen
- Type your question in the compose box, then select **Send**
- If you want to remain anonymous, select **Ask anonymously**

A screenshot of a virtual meeting interface for asking questions. It features a dark grey background with a text input field containing the placeholder text "Ask a question". Below the input field is a checkbox labeled "Ask anonymously" and a right-pointing arrow icon.



Additional Feedback After Tonight

- Online Comment Form is available on the project website: mdta.maryland.gov/I95ETLNB/home.html
- Project Email: I95ETLNB@mdta.maryland.gov
- Comment forms and feedback are due by **January 28**





Purpose of Meeting

- Provide information about the MD 24 Northbound Auxiliary Lane Through Singer Road Intersection project as a part of the I-95 ETL Northbound Extension Program
- Provide information about the next steps for potential Noise Wall Improvements





Tonight's Meeting

- I-95 ETL Northbound Extension Program Overview
- MD 24 Northbound Auxiliary Lane through Singer Road Intersection Project Overview
- Major Project Elements
 - Transportation Improvements
 - Potential Noise Walls





Tonight's Meeting

- Anticipated Project Schedule
- Construction Information
- Question & Answer Session
- Stay Connected





I-95 ETL Northbound Extension Program

Part of “Baltimore’s Traffic Relief Plan” announced by Governor Larry Hogan. The \$1.1 billion expanded program will provide two Express Toll Lanes (ETL) for more than 10 miles from north of MD 43 in Baltimore County to north of MD 24 in Harford County.

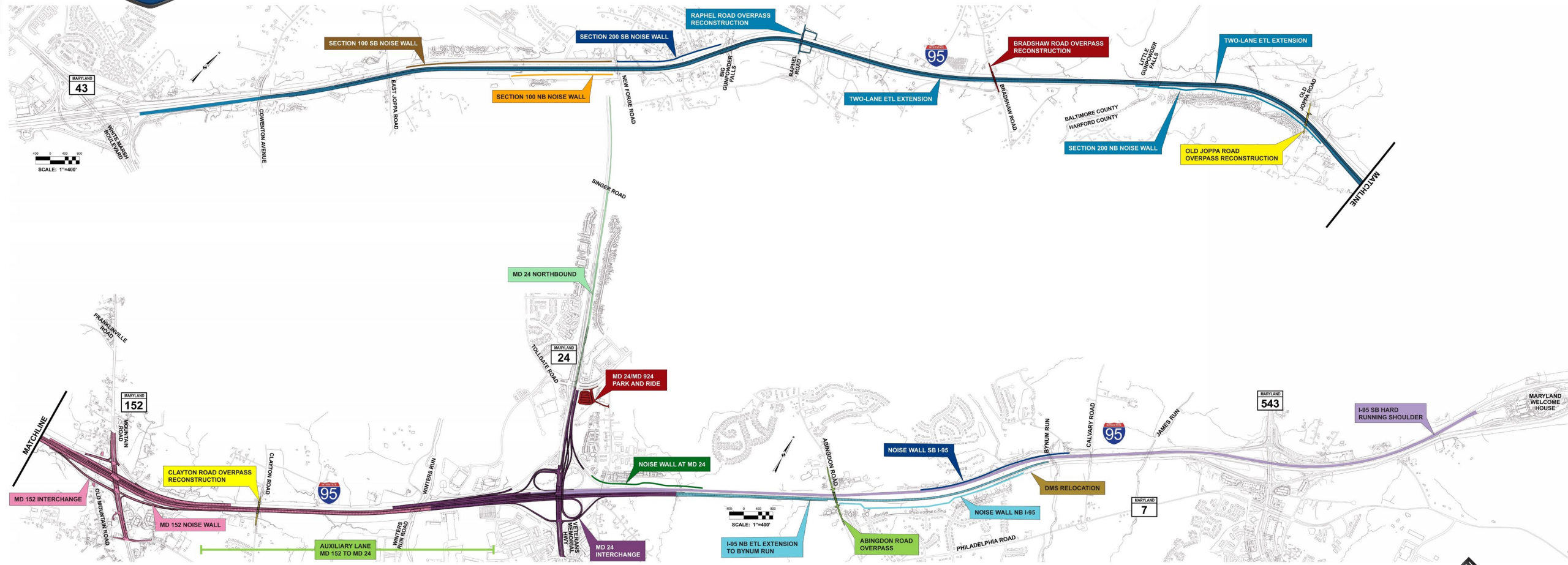
These improvements will:

- Provide traffic congestion relief
- Improve safety along the corridor
- Provide better service
- Enhance the quality of life
- Replace or rehabilitate 50-year-old bridges



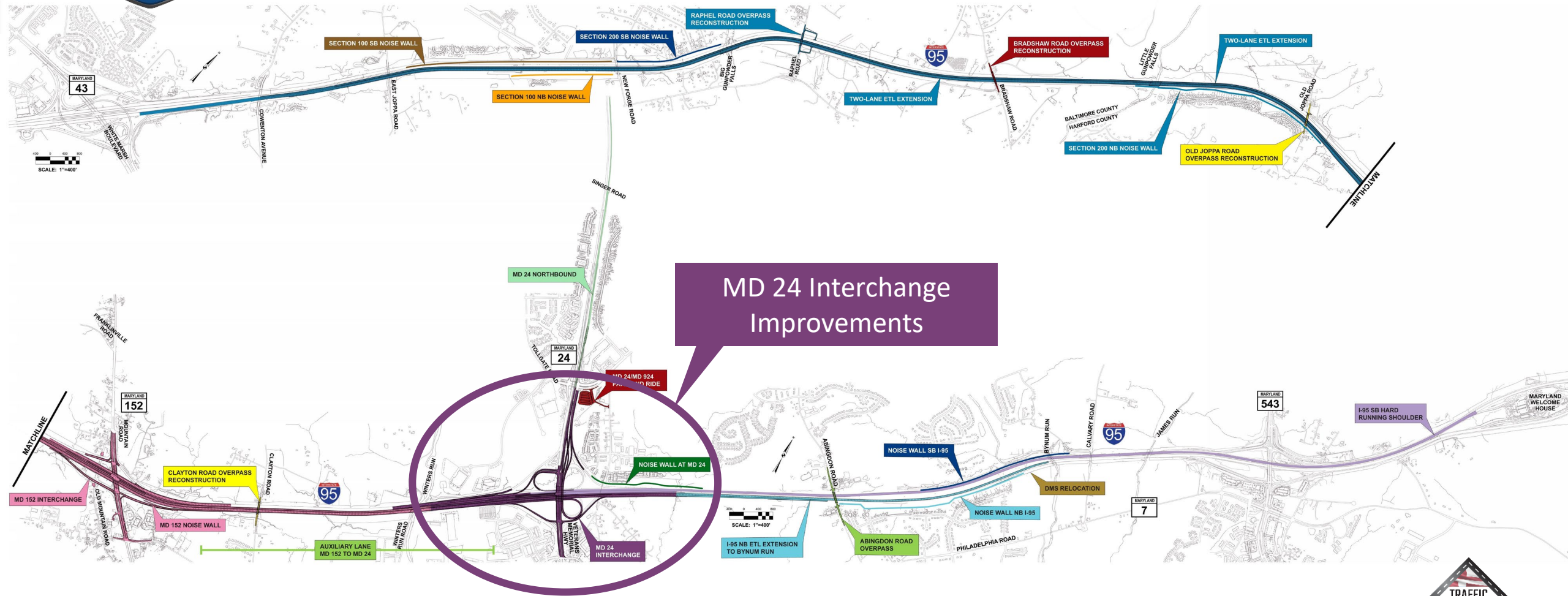


I-95 EXPRESS TOLL LANES (ETL) NORTHBOUND EXTENSION



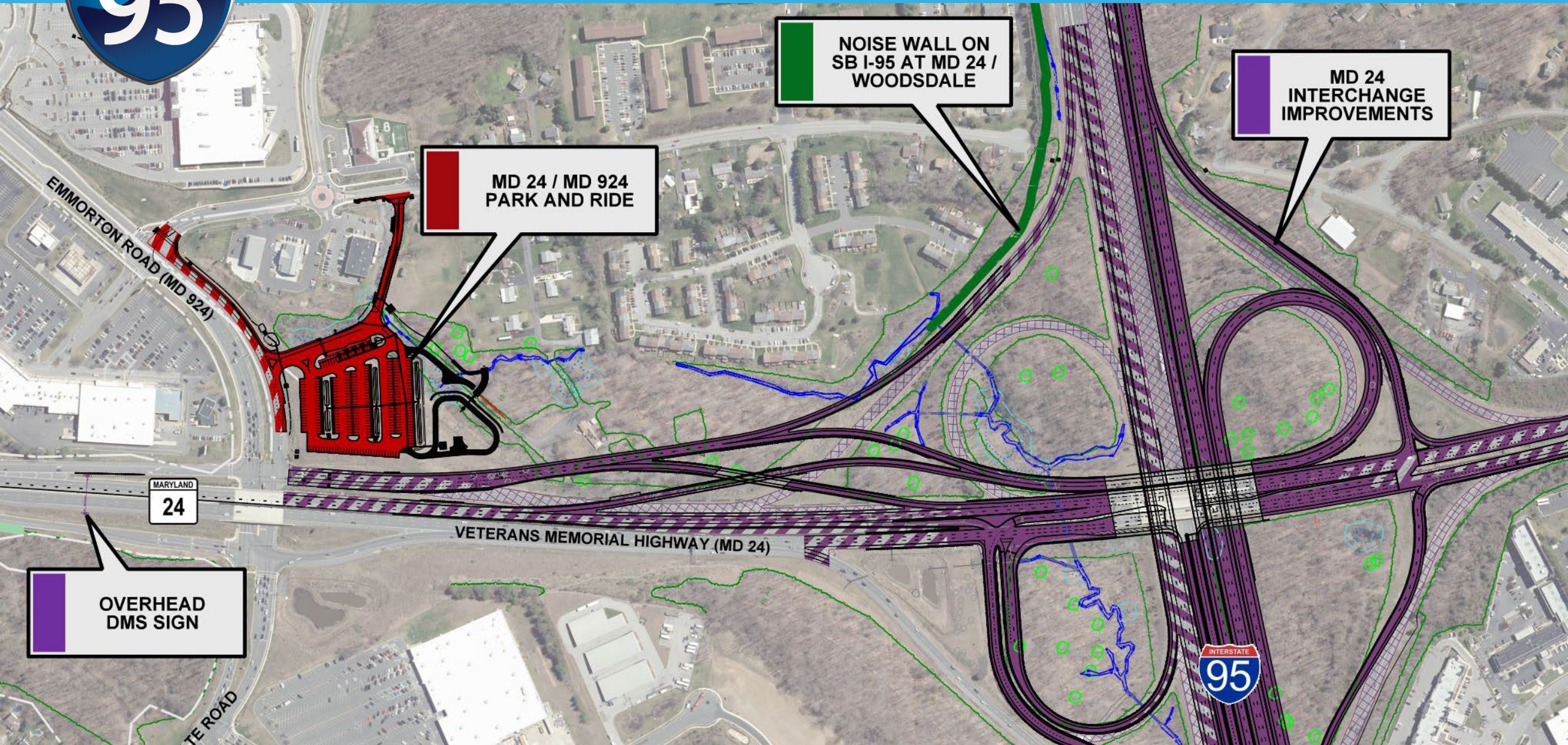


I-95 EXPRESS TOLL LANES (ETL) NORTHBOUND EXTENSION





I-95 EXPRESS TOLL LANES (ETL) NORTHBOUND EXTENSION



**MD 24 / MD 924
PARK AND RIDE**

**NOISE WALL ON
SB I-95 AT MD 24 /
WOODSDALE**

**MD 24
INTERCHANGE
IMPROVEMENTS**

**OVERHEAD
DMS SIGN**



Dynamic Message Sign (DMS)



Existing DMS Sign on Southbound MD 43

- Proposed Location on Southbound MD 24 north of MD 924
- Connected to I-95 Intelligent Transportation System (ITS)



Project Benefits



Provide congestion relief and reduce travel times



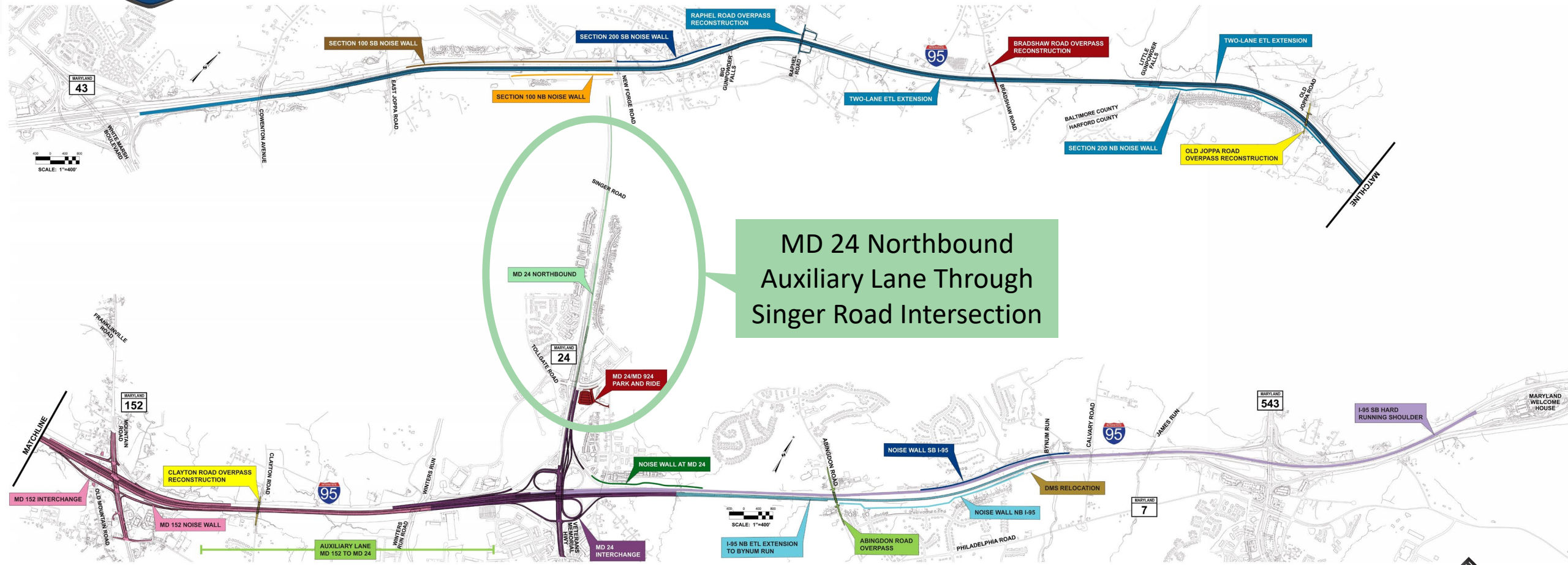
Improve safety for users



Increase quality of life



I-95 EXPRESS TOLL LANES (ETL) NORTHBOUND EXTENSION



MD 24 Northbound
Auxiliary Lane Through
Singer Road Intersection





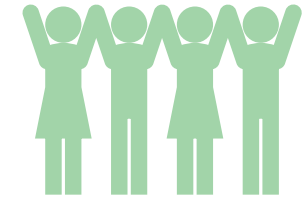
Project Benefits



Provide congestion relief
and reduce travel times



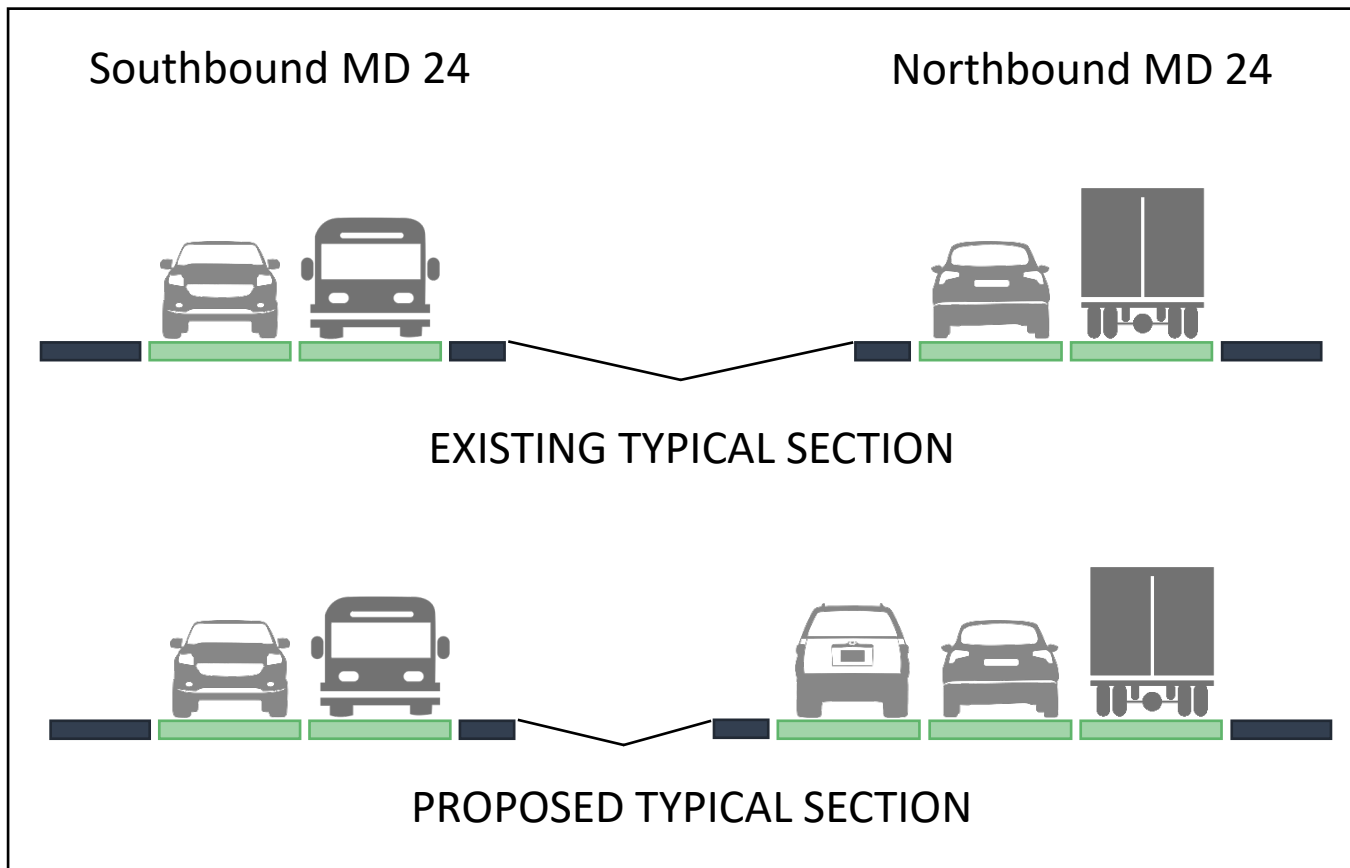
Improve safety for users



Increase quality of life



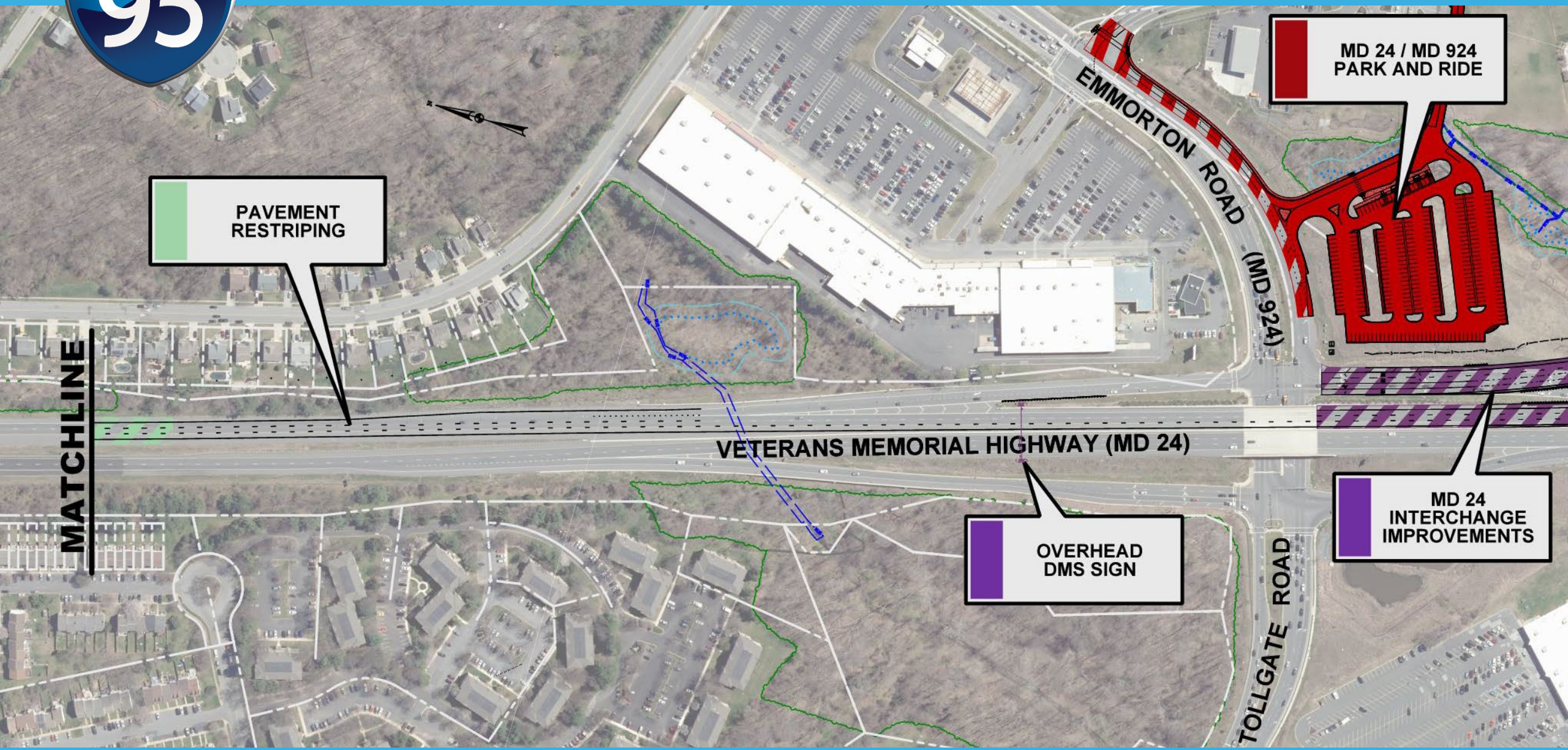
Transportation Improvements



- Extend Auxiliary Lane Northbound on MD 24 from MD 924 through the Singer Road Intersection
- Roadway Widening and Resurfacing
- Traffic Signal Modification at Singer Road



I-95 EXPRESS TOLL LANES (ETL) NORTHBOUND EXTENSION



PAVEMENT
RESTRIPING

MATCHLINE

VETERANS MEMORIAL HIGHWAY (MD 24)

OVERHEAD
DMS SIGN

MD 24 / MD 924
PARK AND RIDE

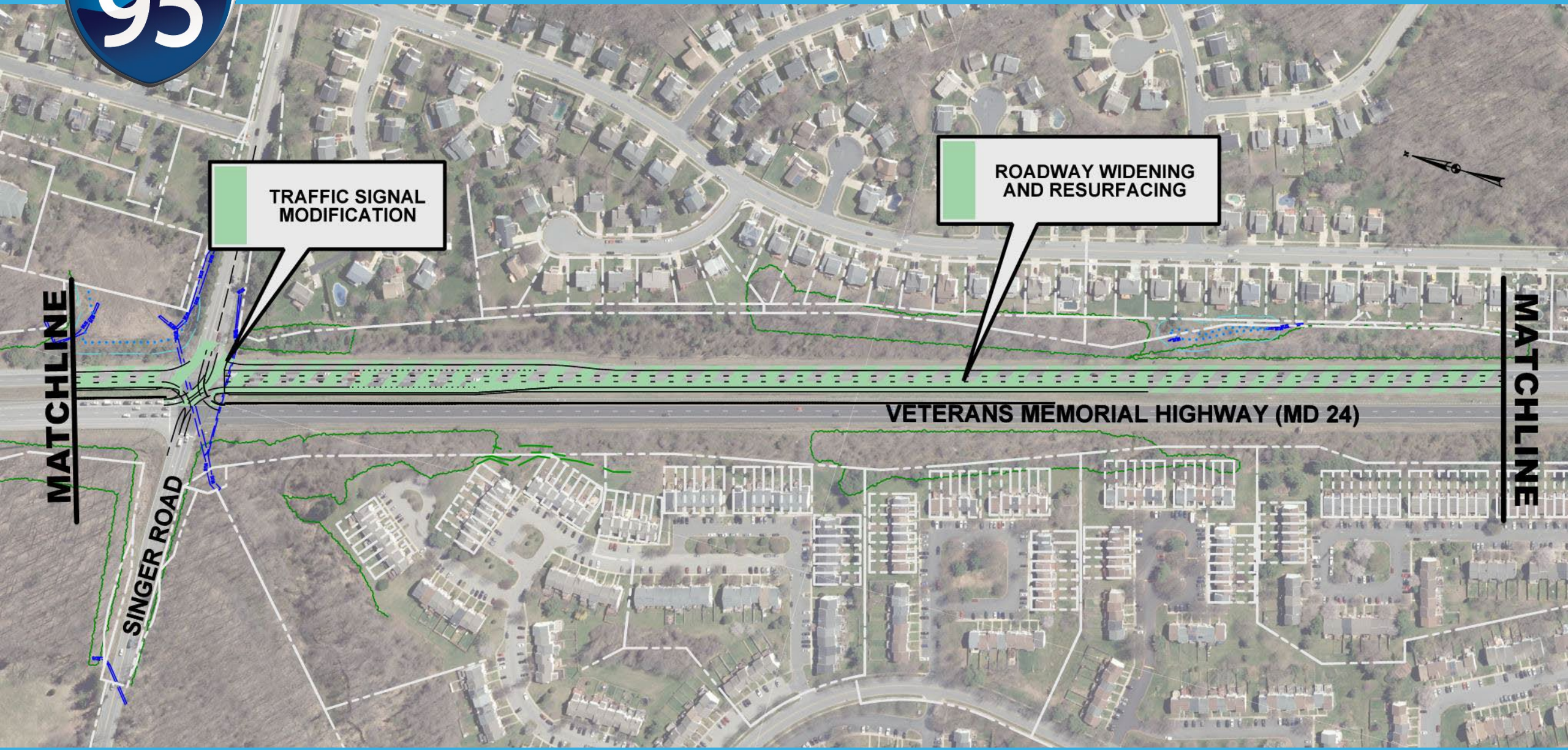
MD 24
INTERCHANGE
IMPROVEMENTS

EMMORTON ROAD (MD 924)

TOLLGATE ROAD



I-95 EXPRESS TOLL LANES (ETL) NORTHBOUND EXTENSION



TRAFFIC SIGNAL
MODIFICATION

ROADWAY WIDENING
AND RESURFACING

MATCHLINE

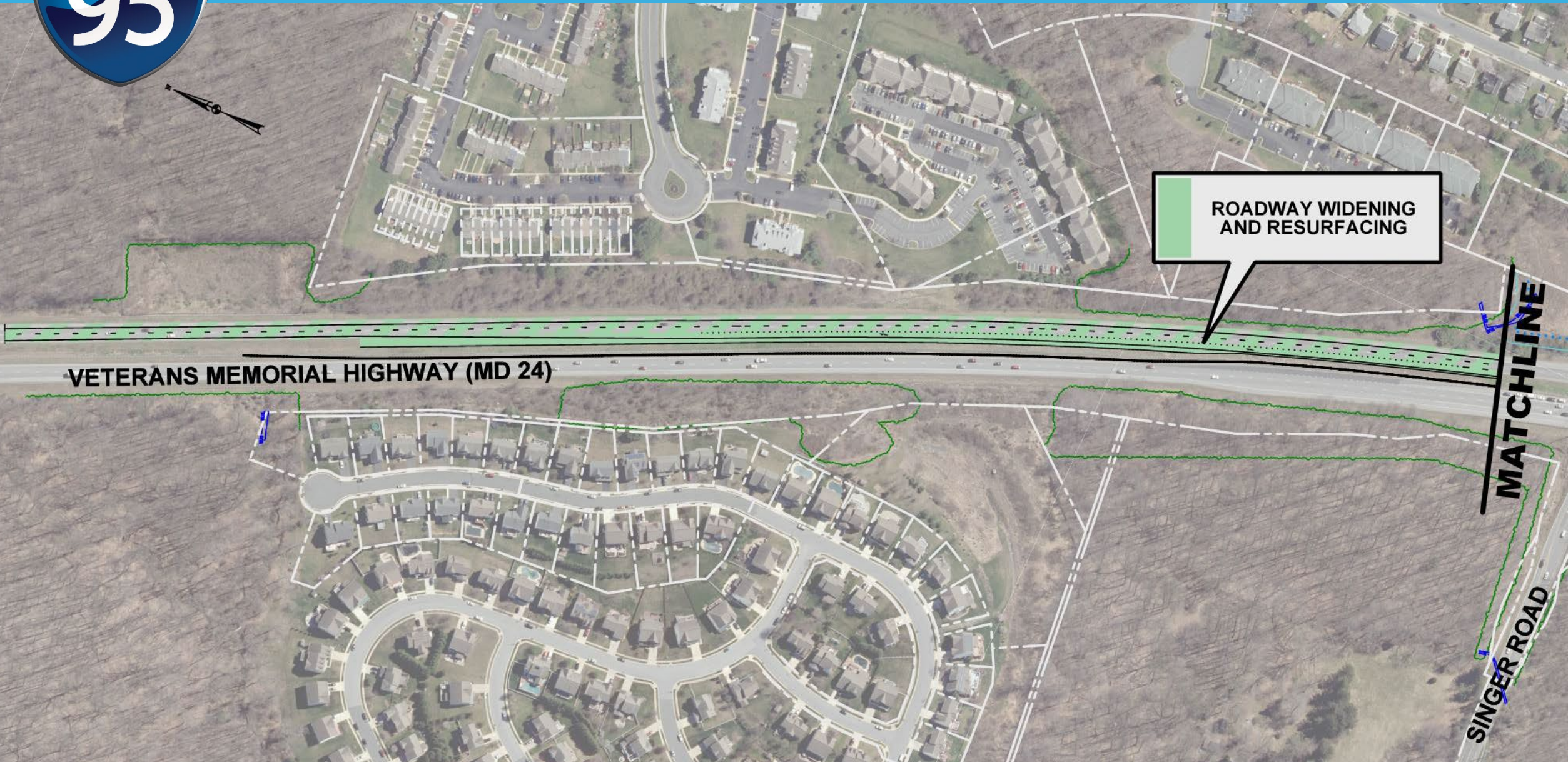
MATCHLINE

VETERANS MEMORIAL HIGHWAY (MD 24)

SINGER ROAD



I-95 EXPRESS TOLL LANES (ETL) NORTHBOUND EXTENSION



ROADWAY WIDENING AND RESURFACING

VETERANS MEMORIAL HIGHWAY (MD 24)

MATCHLINE
SINGER ROAD



Noise Analysis Process



- 1 ■ **IDENTIFY** existing areas affected by noise from the highway - these are called *Noise Sensitive Areas (NSAs)*
- 2 ■ **MONITOR** existing noise levels
- 3 ■ **PREDICT** future noise by predicting future traffic volumes
- 4 ■ **DETERMINE** the degree and extent of traffic noise impacts
- 5 ■ **EVALUATE** methods to reduce noise impacts



MDOT Highway Noise Policy



- Noise Walls are considered when highway projects result in a ‘substantial increase’ in noise levels or noise levels over 66 decibels
- Noise Walls must be proven both **Feasible** and **Reasonable** based on cost and number of benefitted residences

Noise walls do not eliminate traffic noise but will reduce the level of the traffic noise.



Noise Walls

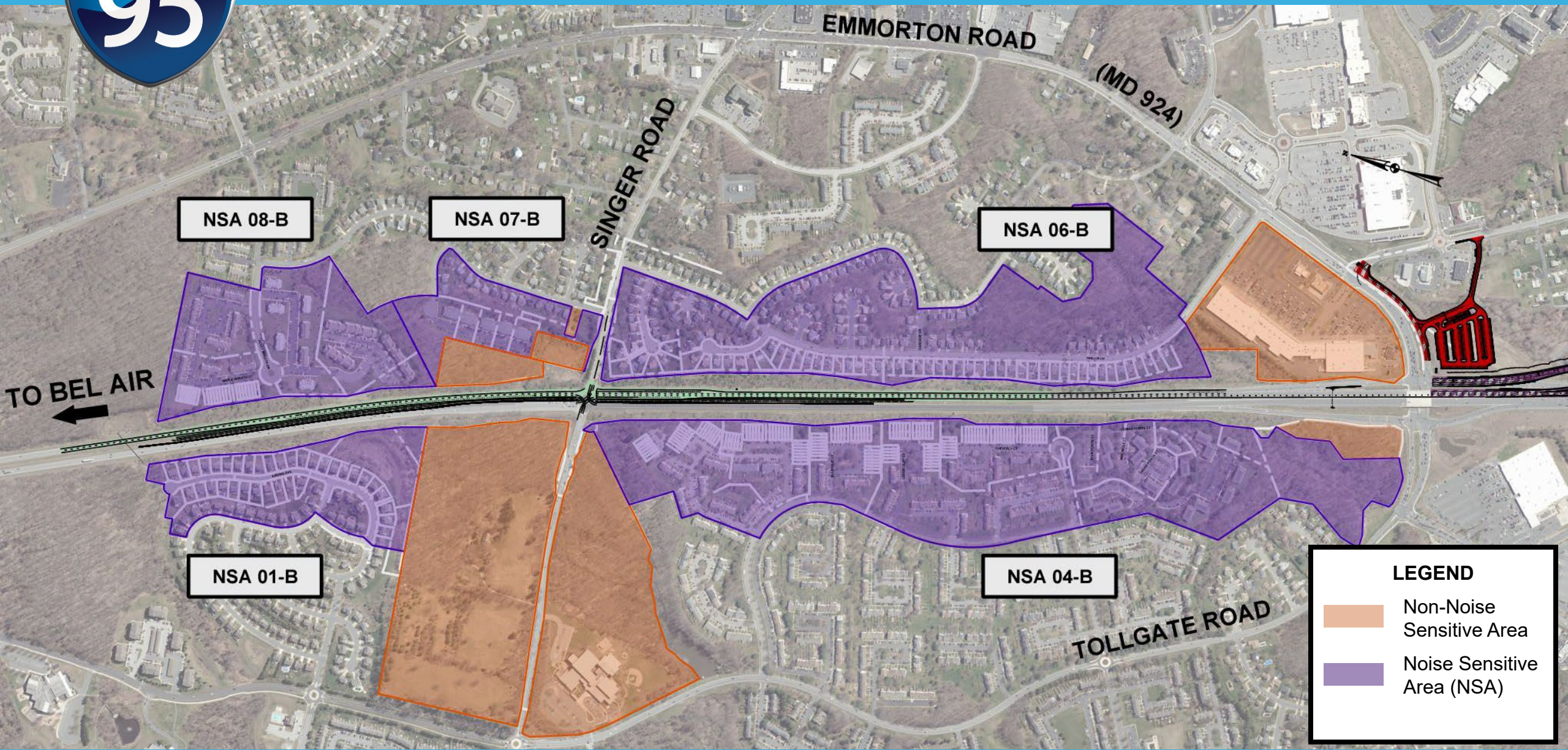


Noise Measurements at Existing Berms

- Existing site conditions, including earth berms and trees, act as natural noise abatement and visual barrier along the project corridor



I-95 EXPRESS TOLL LANES (ETL) NORTHBOUND EXTENSION





Noise Wall Evaluation

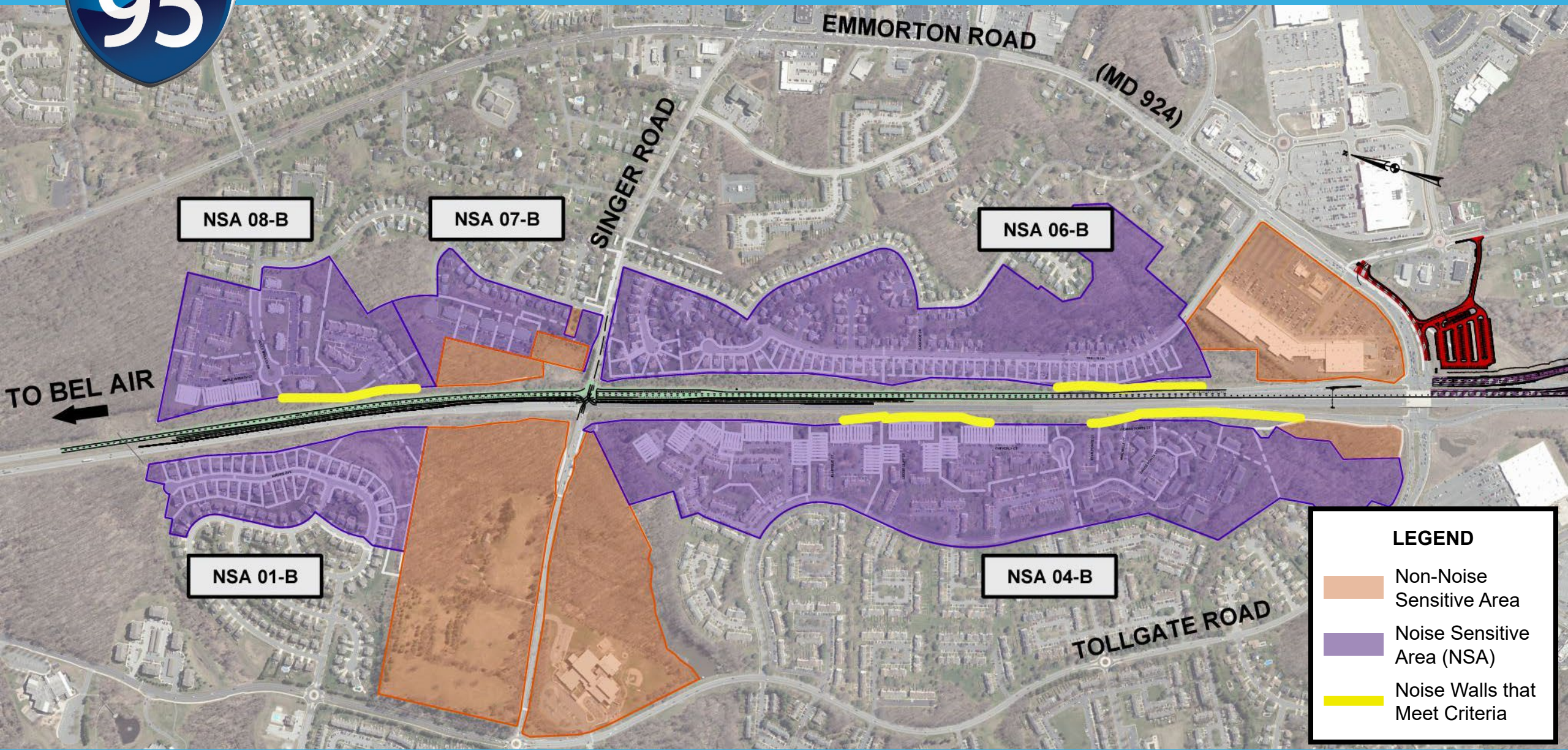


Noise Measurements

- Noise model developed to evaluate 138 locations along project corridor
- Evaluated to determine areas with significant increases in noise level, or noise levels over 66 dBA
- Three potential noise walls meet State criteria and are both **Feasible** and **Reasonable**



I-95 EXPRESS TOLL LANES (ETL) NORTHBOUND EXTENSION

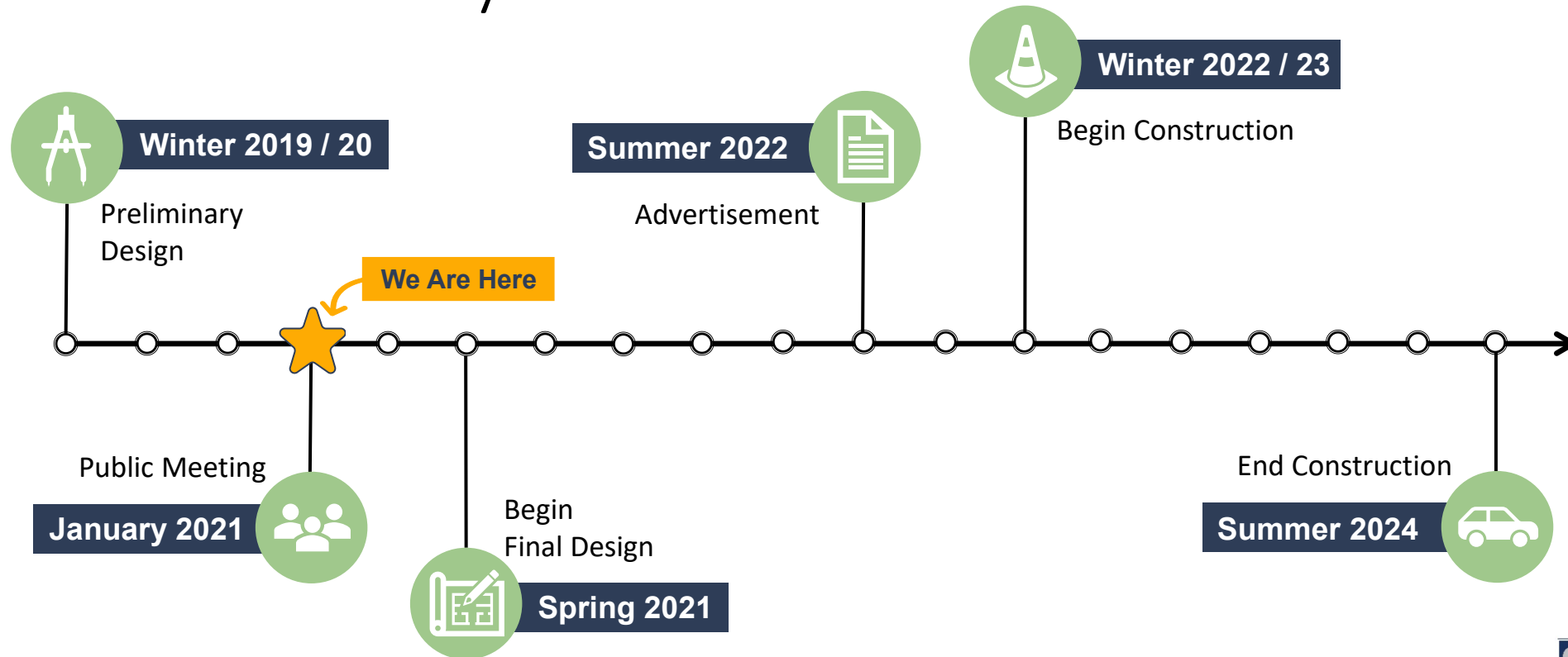


LEGEND

- Non-Noise Sensitive Area
- Noise Sensitive Area (NSA)
- Noise Walls that Meet Criteria



Anticipated Project Schedule for the MD 24 Northbound Auxiliary Lane






Construction Information



- Construction Start
Winter 2022/23
- Estimated Duration
18 months
- No Peak Hour Road Closures or
Detours
- Occasional Lane Closures
- Shoulder Closures



Asking Questions at tonight's Virtual Public Meeting

- Select **Q&A**  on the right side of the screen
- Type your question in the compose box, then select **Send**
- If you want to remain anonymous, select **Ask anonymously**

A screenshot of a virtual meeting interface showing a dark grey text input field with the placeholder text "Ask a question". Below the input field is a checkbox labeled "Ask anonymously" and a right-pointing arrow button.



I-95 EXPRESS TOLL LANES (ETL) NORTHBOUND EXTENSION



Comment Forms are due by
February 18, 2021

Submit Comments and Questions on our Website

mdta.maryland.gov/I95ETLNB/home.html

Project Email

I95ETLNB@mdta.maryland.gov