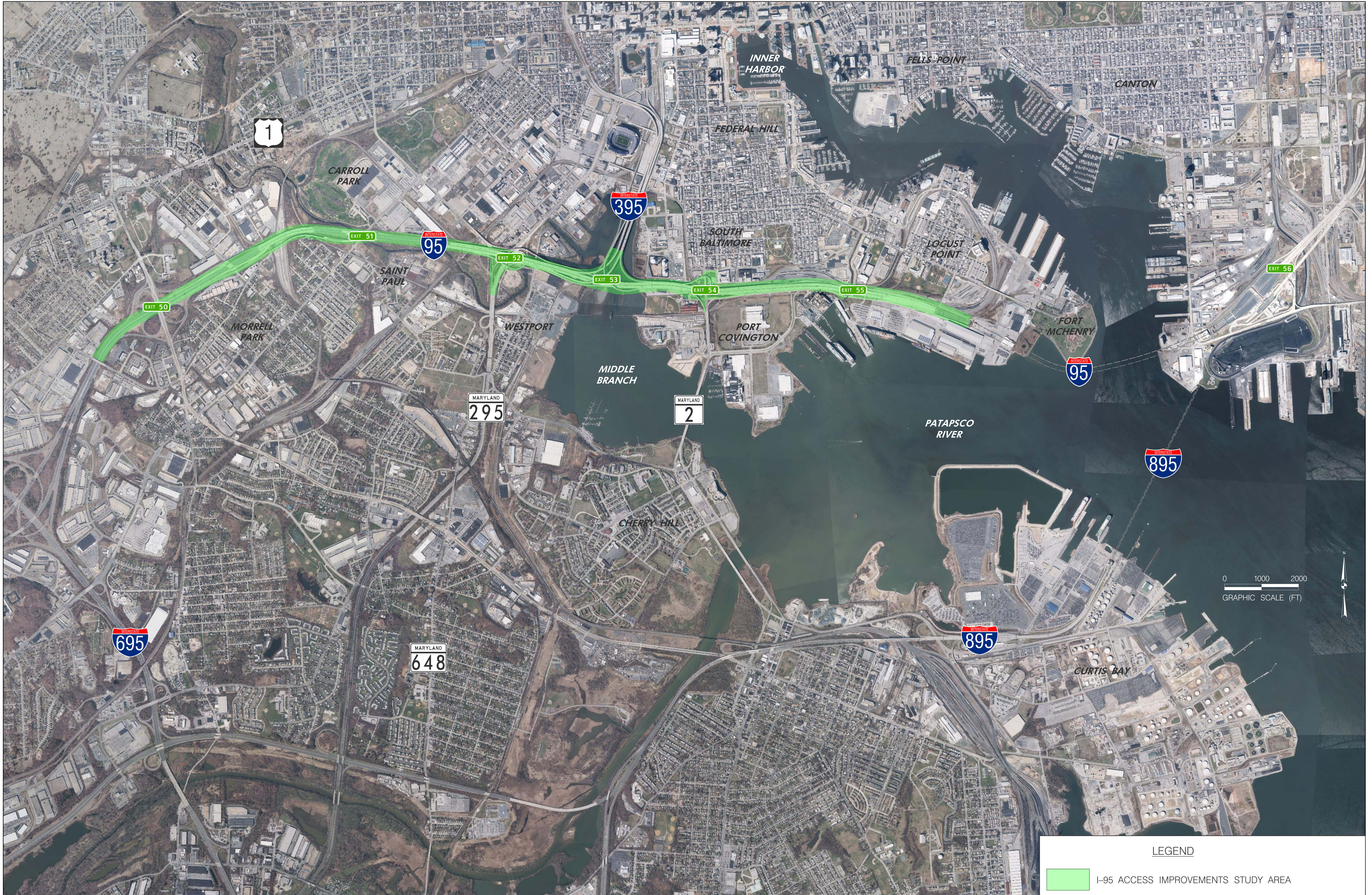
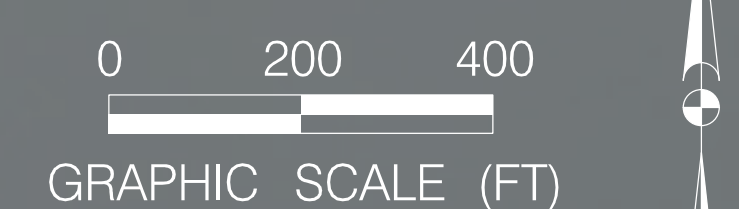
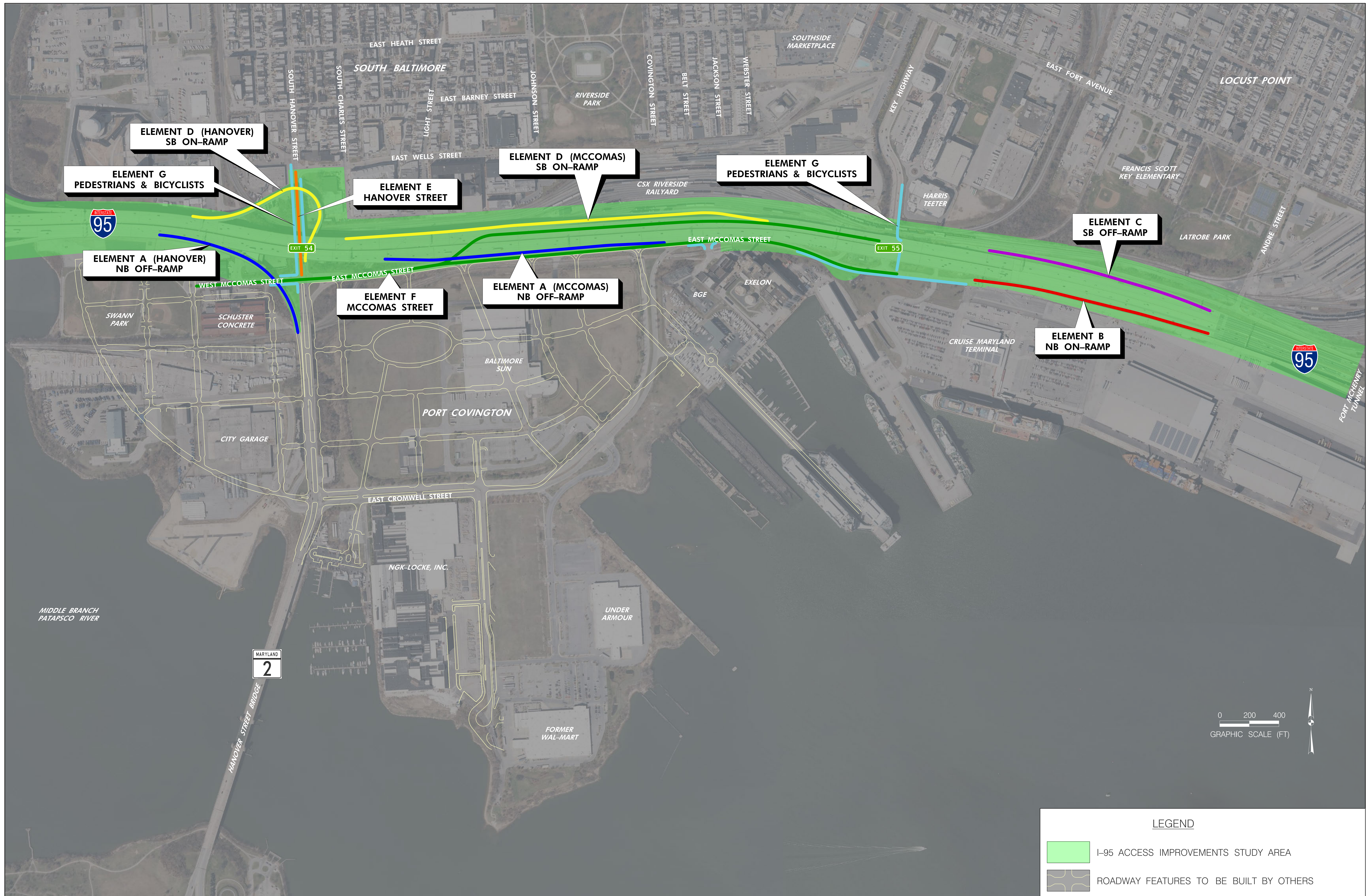


# STUDY AREA MAP

# INTERSTATE 95 ACCESS IMPROVEMENTS STUDY





LEGEND	
	I-95 ACCESS IMPROVEMENTS STUDY AREA
	ROADWAY FEATURES TO BE BUILT BY OTHERS

# SUMMARY OF ELEMENTS & OPTIONS



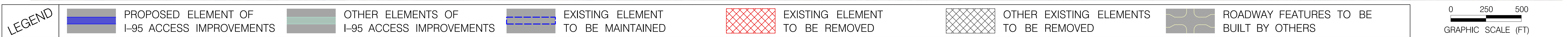
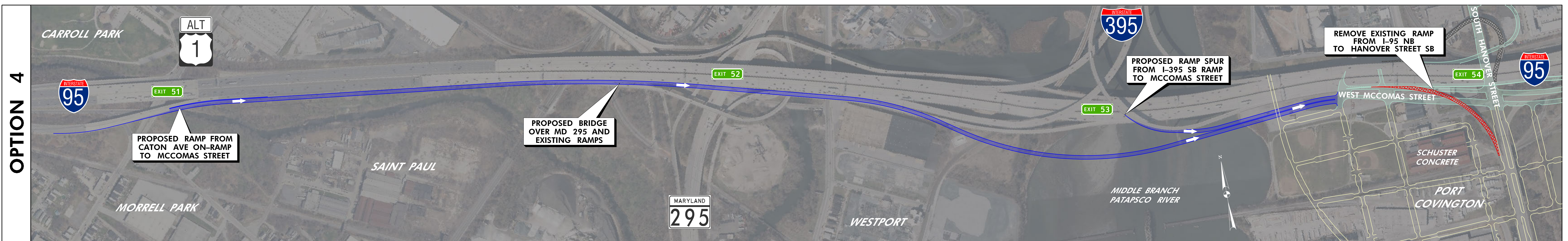
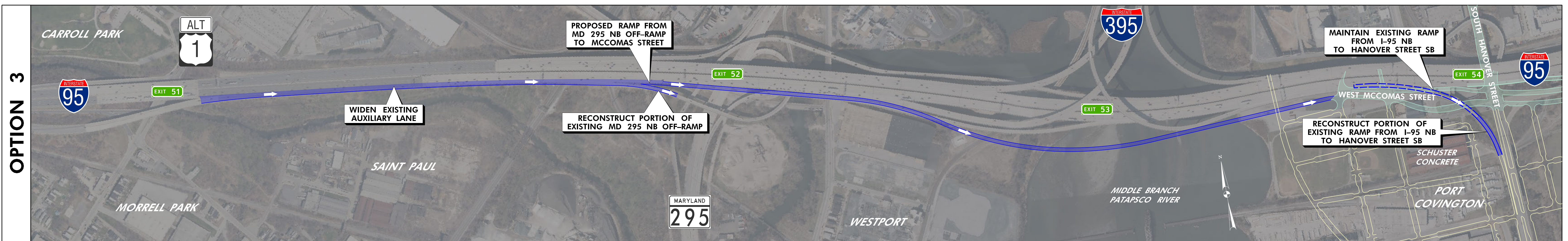
# INTERSTATE 95 ACCESS IMPROVEMENTS STUDY



	Element A NB Off-Ramps: Hanover St & McComas St	Element B NB On-Ramps: Key Highway	Element C SB Off-Ramps: Key Highway	Element D SB On-Ramps: Hanover St & McComas St	Element E Hanover St	Element F McComas St	Element G Pedestrians & Bicyclists
Option 1 / No-Build	Maintain Existing Ramp from I-95 NB to Hanover St SB <hr/> Maintain Existing Ramp from I-95 NB to McComas St EB	Maintain Existing Ramp from Key Hwy/E McComas St to I-95 NB	Maintain Existing Ramp from I-95 SB to Key Hwy/E McComas St	Maintain Existing Ramp from Hanover St NB to I-95 SB <hr/> Maintain Existing Ramp from E McComas St WB to I-95 SB	Maintain Existing S Hanover St	Maintain Existing Two-Way Portion of E McComas St <hr/> Maintain Existing EB and WB One-Way Portions of E McComas St	Maintain Existing Sidewalks on Hanover St and Key Hwy
Option 2	Proposed Ramp Spur from I-395 NB Ramp to McComas St & Proposed Ramp Spur from MD 295 NB Ramp to McComas St <hr/> Proposed Ramp from I-95 NB to Two-Way McComas St	Proposed Ramp from Hanover St to I-95 NB with Spur from E McComas St & Maintain Existing Ramp from Key Hwy/E McComas St to I-95 NB	Proposed Widening of Existing Ramp from I-95 SB to Key Hwy/E McComas St	Widen Portion of Existing Ramp from Hanover St NB to I-95 SB <hr/> Maintain Existing Ramp from E McComas St WB to I-95 SB	Widen Existing S Hanover St & Match Proposed Two-Lane Ramp	Proposed Two-Way E McComas St <hr/> Maintain Existing WB One-Way Portion of E McComas St	Widen Existing Sidewalks on Hanover St and Key Hwy & Proposed Sidewalk Adjacent to E McComas St & Proposed Share Use Path Over CSX Tracks/Under I-95
Option 3	Proposed Ramp from MD 295 NB Off-Ramp to McComas St & Maintain Existing Ramp from I-95 NB to Hanover St SB <hr/> Proposed Ramp from I-95 NB to Two-Way McComas St, Weaving Between I-95 Piers	Proposed Ramp from E McComas St to I-95 NB & Maintain Existing Ramp from Key Hwy/E McComas St to I-95 NB	Proposed Two-Lane Exit Ramp from I-95 SB to Key Hwy/E McComas St	Proposed Ramp from Hanover St @ Wells St Intersection to I-95 SB <hr/> Reconstruct Portion of Existing Ramp from E McComas St WB to I-95 SB	Widen Existing S Hanover St & Match Existing Ramp	Proposed Two-Way E McComas St & Weave Around Existing Ramp Piers <hr/> Maintain Existing WB One-Way Portion of E McComas St	Widen Existing Sidewalks on Hanover St and Key Hwy & Proposed Sidewalk Adjacent to E McComas St & Proposed Share Use Path Over CSX Tracks/Under I-95
Option 4	Proposed Ramp from Caton Ave On-Ramp & Proposed Ramp Spur from I-395 SB Ramp to McComas St <hr/> Proposed Ramp from I-95 NB to Diverging McComas St & Proposed Spur to Access Port Covington		Proposed Ramp from I-95 SB to Key Hwy/E McComas St & Maintain Existing Ramp from I-95 SB to Key Hwy/E McComas St		Widen Existing S Hanover St & Match Proposed Realigned Ramp	Proposed Two-Way E McComas St with Diverging Section <hr/> Maintain Existing WB One-Way Portion of E McComas St	Widen Existing Sidewalks on Hanover St and Key Hwy & Proposed Sidewalk Adjacent to Diverging E McComas St & Proposed Share Use Path Over CSX Tracks/Under I-95

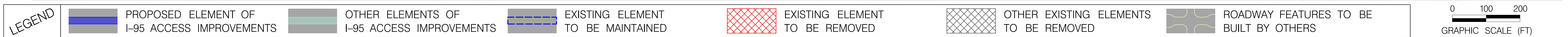
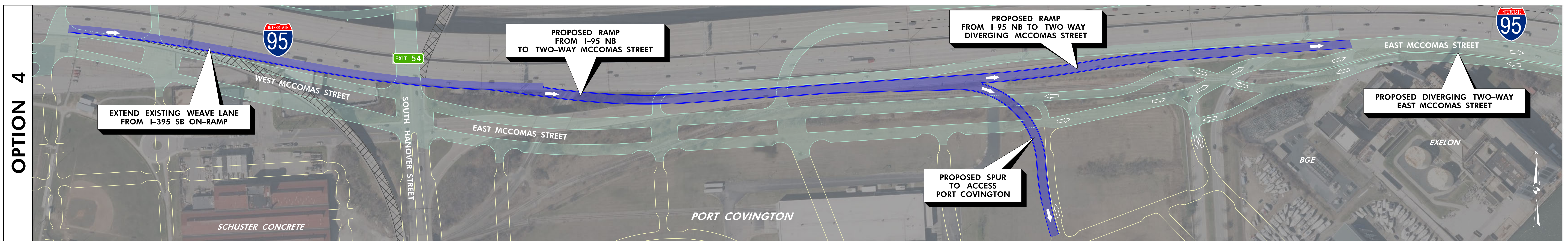
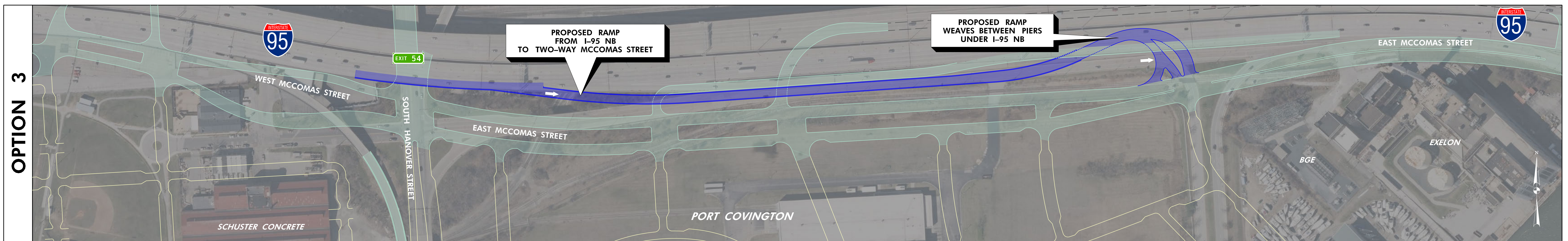
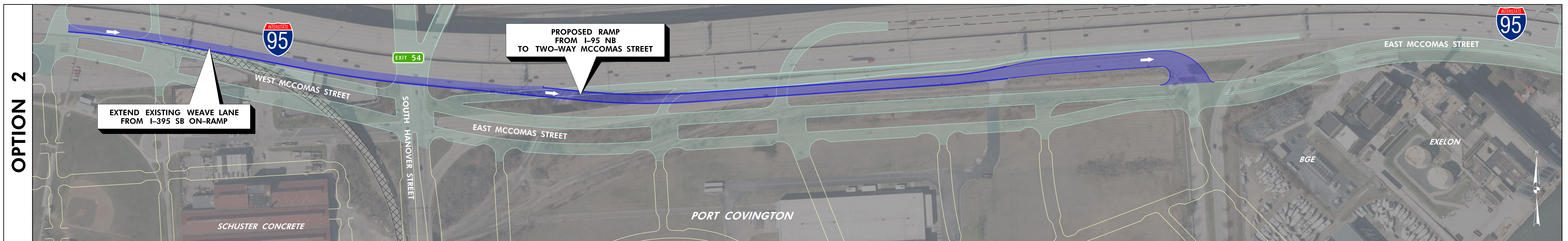
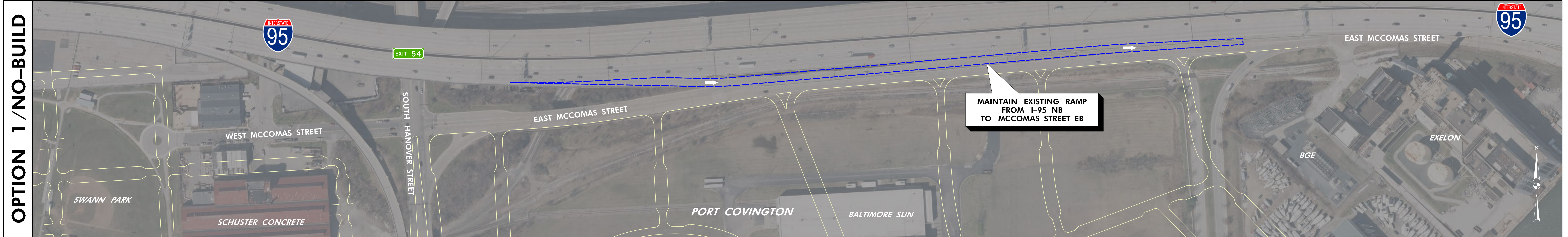
# ELEMENT A (HANOVER) – NORTHBOUND OFF-RAMP

# INTERSTATE 95 ACCESS IMPROVEMENTS STUDY



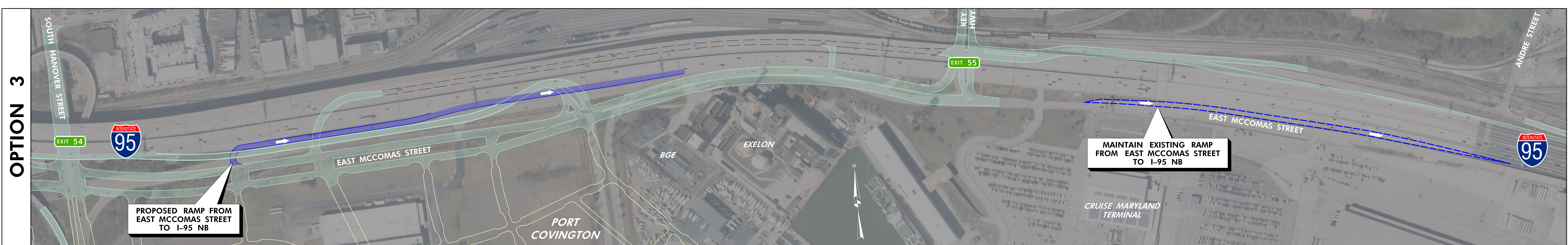
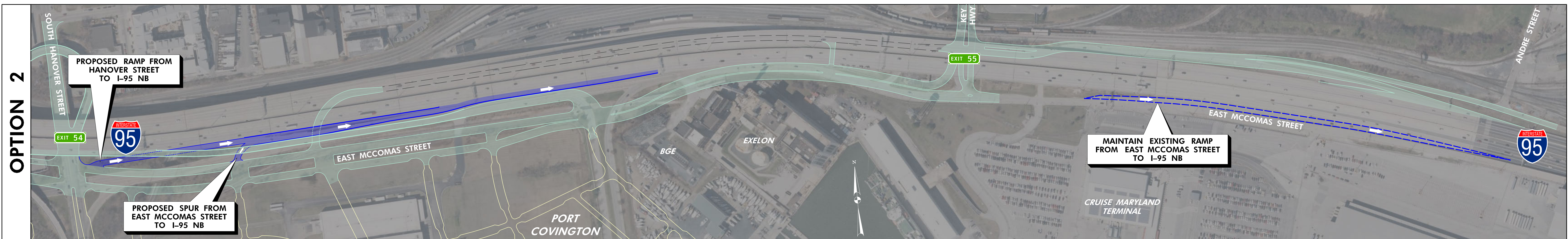
# ELEMENT A (MCCOMAS) – NORTHBOUND OFF-RAMP

# INTERSTATE 95 ACCESS IMPROVEMENTS STUDY

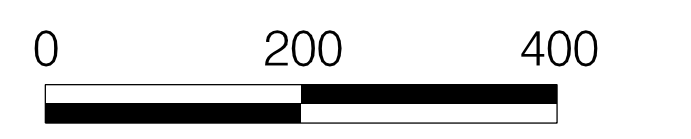


# ELEMENT B – NORTHBOUND ON-RAMPS

# INTERSTATE 95 ACCESS IMPROVEMENTS STUDY

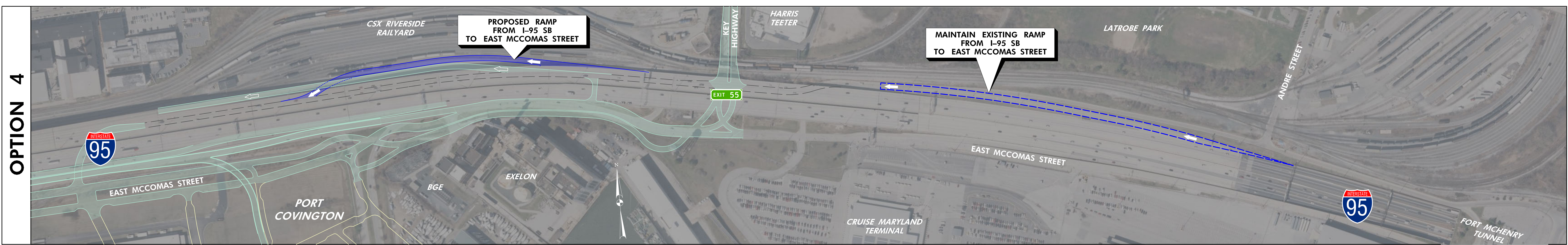
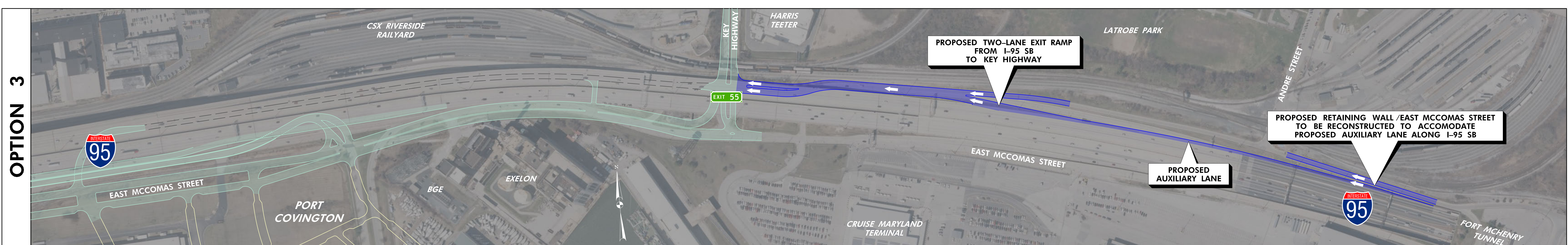
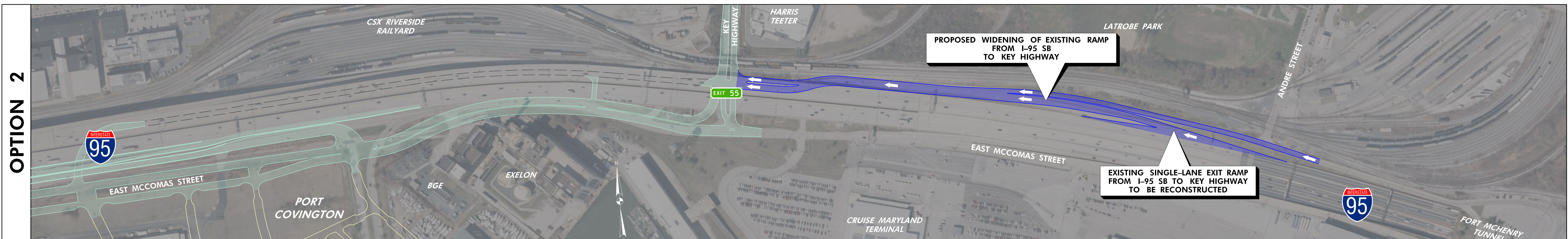
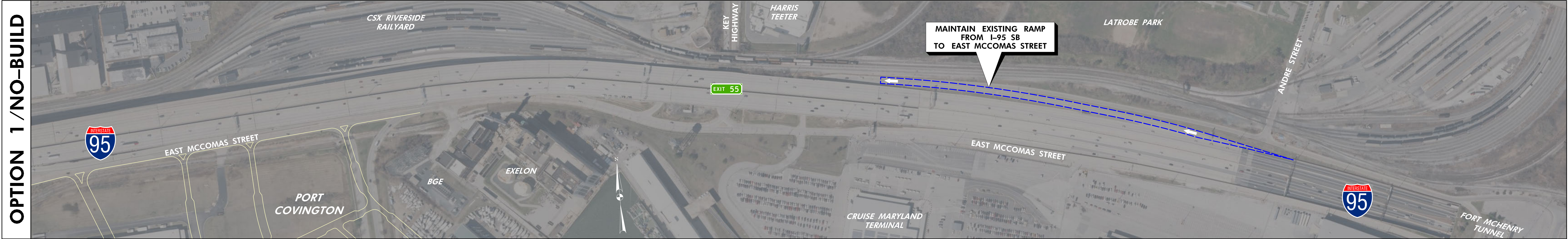


LEGEND	PROPOSED ELEMENT OF I-95 ACCESS IMPROVEMENTS	OTHER ELEMENTS OF I-95 ACCESS IMPROVEMENTS	EXISTING ELEMENT TO BE MAINTAINED	EXISTING ELEMENT TO BE REMOVED	OTHER EXISTING ELEMENTS TO BE REMOVED	ROADWAY FEATURES TO BE BUILT BY OTHERS



# ELEMENT C – SOUTHBOUND OFF-RAMPS

# INTERSTATE 95 ACCESS IMPROVEMENTS STUDY



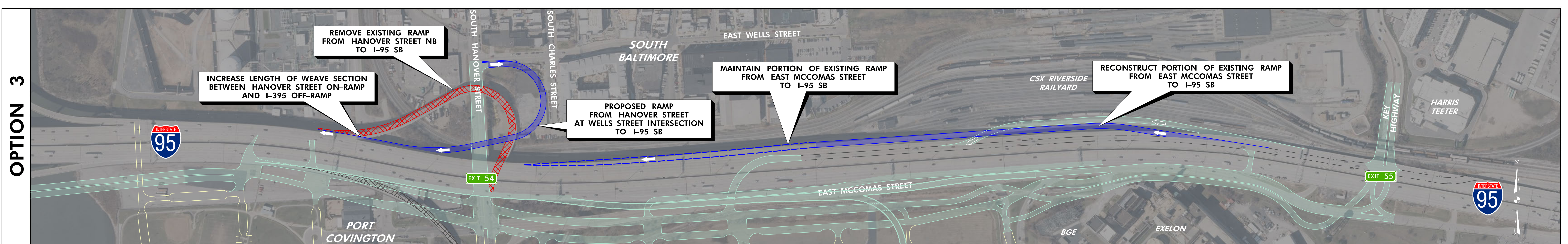
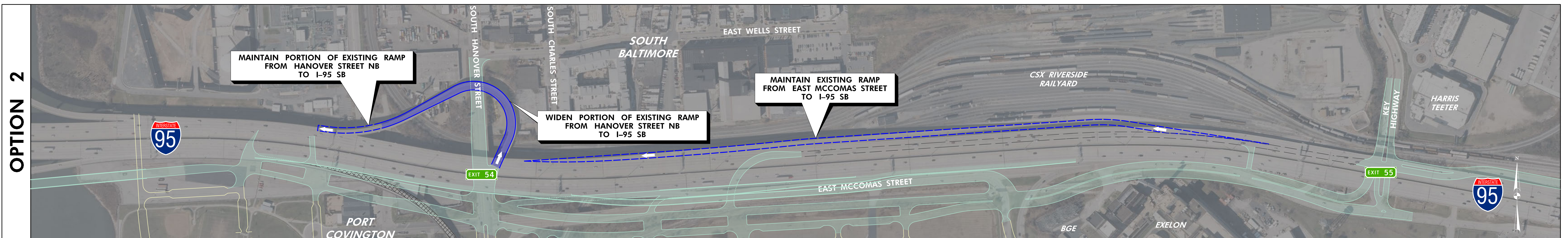
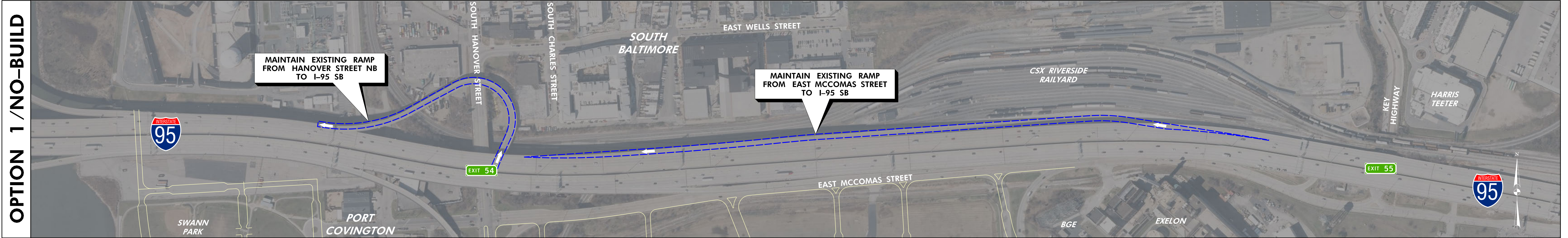
**LEGEND**

	PROPOSED ELEMENT OF I-95 ACCESS IMPROVEMENTS		OTHER ELEMENTS OF I-95 ACCESS IMPROVEMENTS		EXISTING ELEMENT TO BE MAINTAINED		EXISTING ELEMENT TO BE REMOVED		OTHER EXISTING ELEMENTS TO BE REMOVED		ROADWAY FEATURES TO BE BUILT BY OTHERS
--	--	--	--	--	-----------------------------------	--	--------------------------------	--	---------------------------------------	--	--

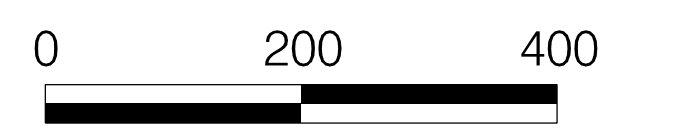
0 200 400

# ELEMENT D – SOUTHBOUND ON-RAMPS

# INTERSTATE 95 ACCESS IMPROVEMENTS STUDY

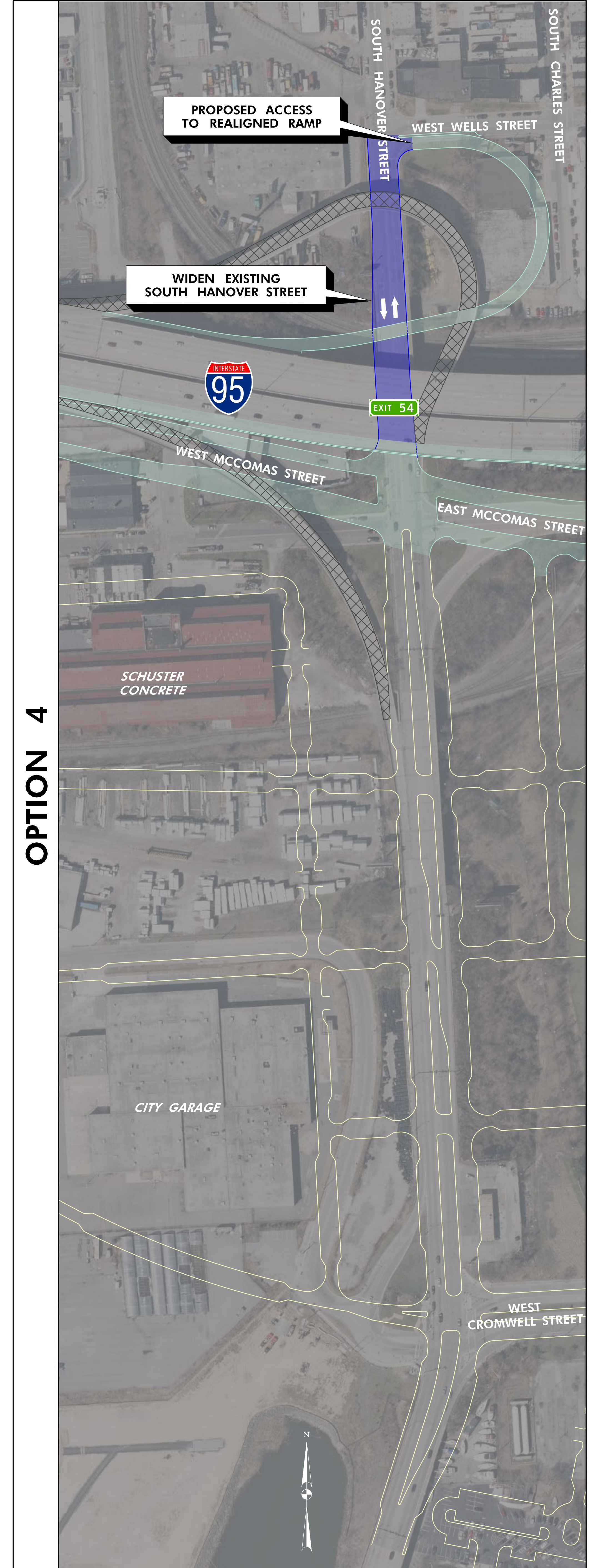
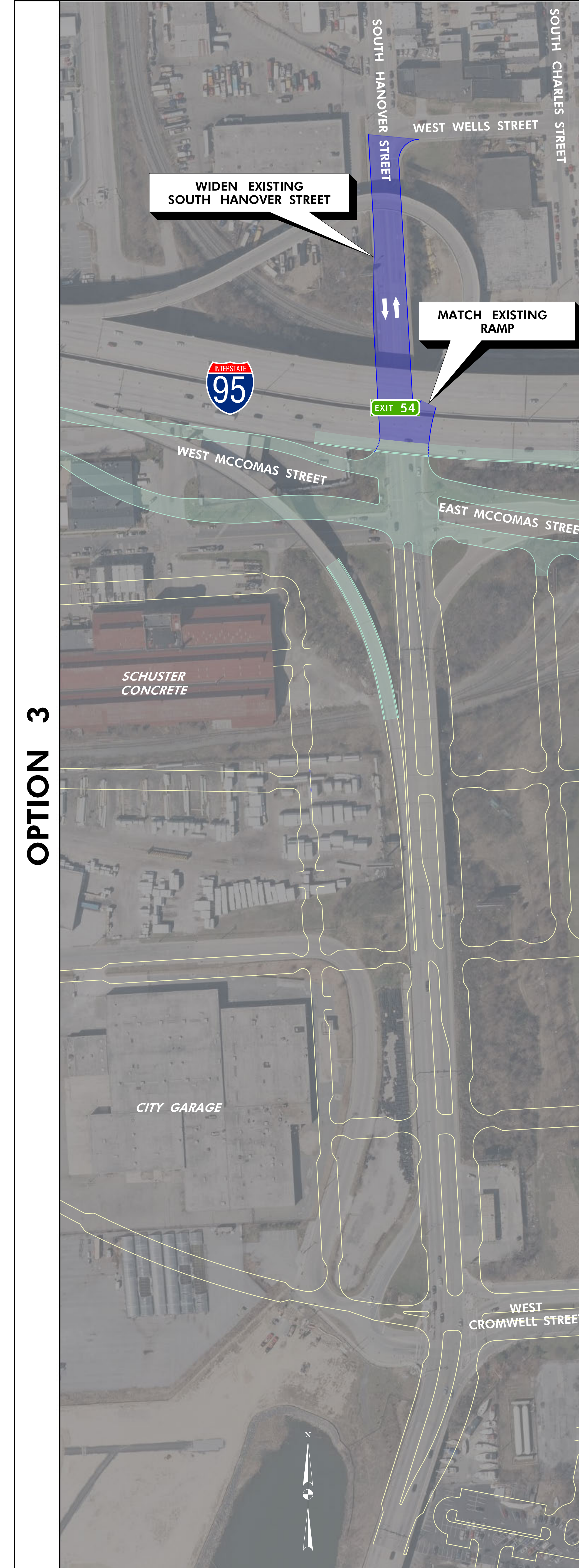
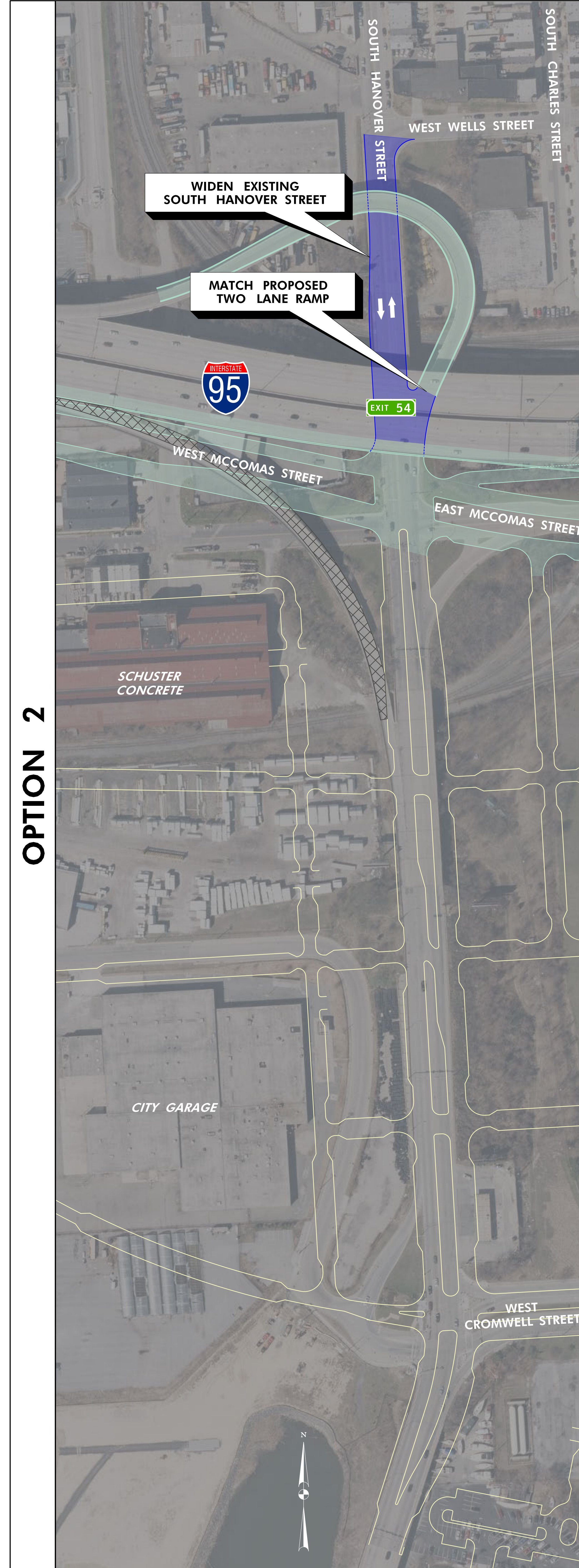


LEGEND	PROPOSED ELEMENT OF I-95 ACCESS IMPROVEMENTS	OTHER ELEMENTS OF I-95 ACCESS IMPROVEMENTS	EXISTING ELEMENT TO BE MAINTAINED	EXISTING ELEMENT TO BE REMOVED	OTHER EXISTING ELEMENTS TO BE REMOVED	ROADWAY FEATURES TO BE BUILT BY OTHERS





# ELEMENT E – HANOVER STREET

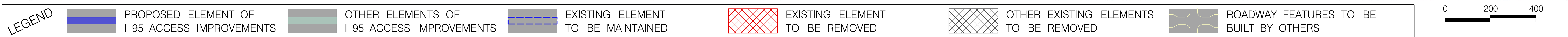
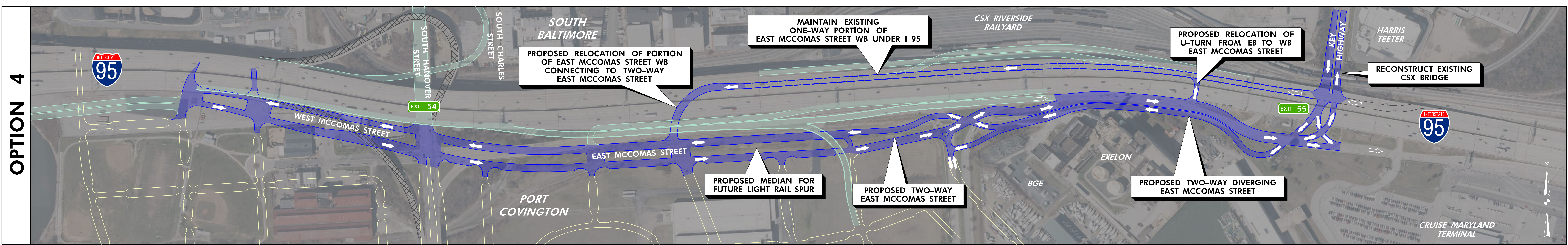
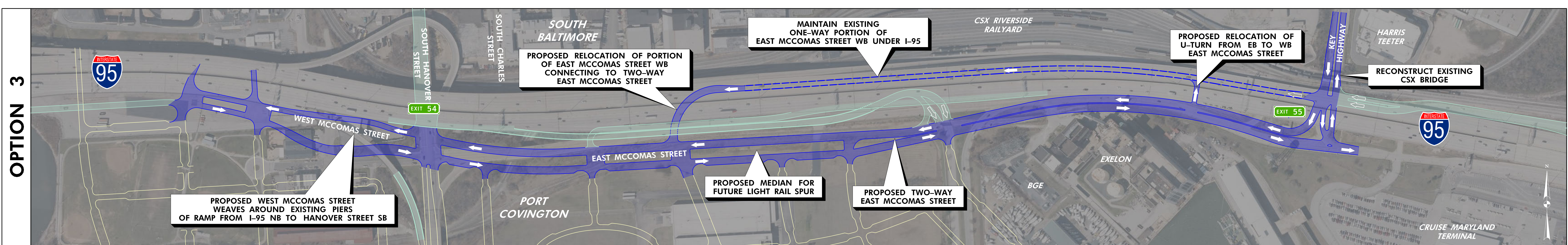
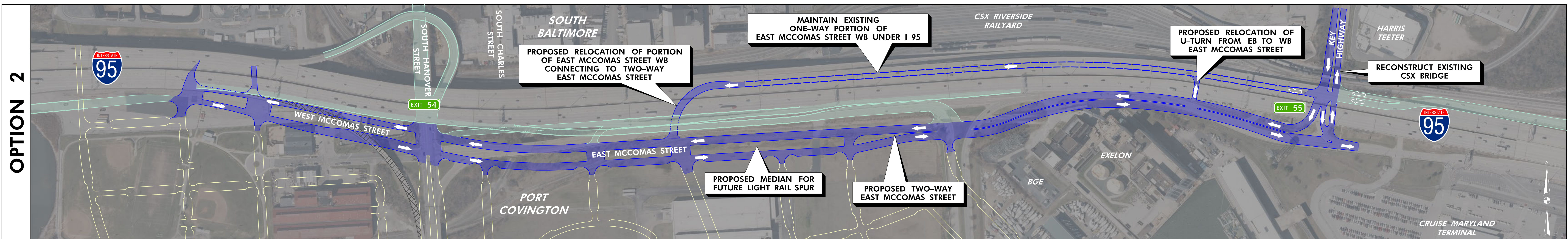
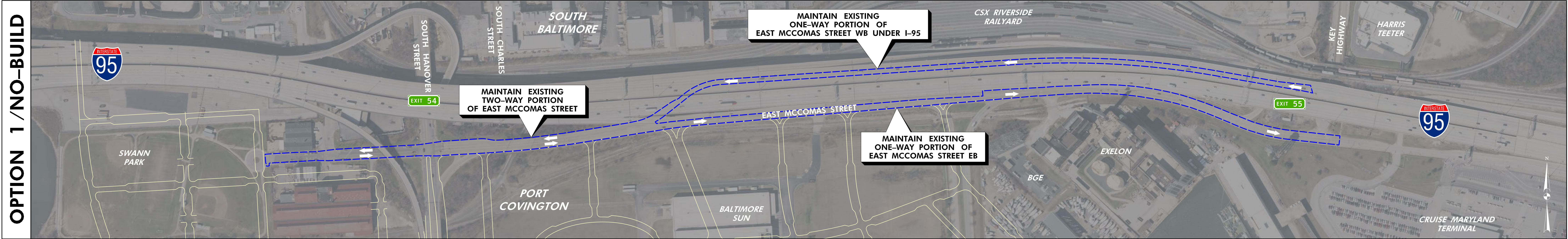


**LEGEND**

	PROPOSED ELEMENT OF I-95 ACCESS IMPROVEMENTS		OTHER ELEMENTS OF I-95 ACCESS IMPROVEMENTS		EXISTING ELEMENT TO BE MAINTAINED		EXISTING ELEMENT TO BE REMOVED		OTHER EXISTING ELEMENTS TO BE REMOVED		ROADWAY FEATURES TO BE BUILT BY OTHERS
--	--	--	--	--	-----------------------------------	--	--------------------------------	--	---------------------------------------	--	--

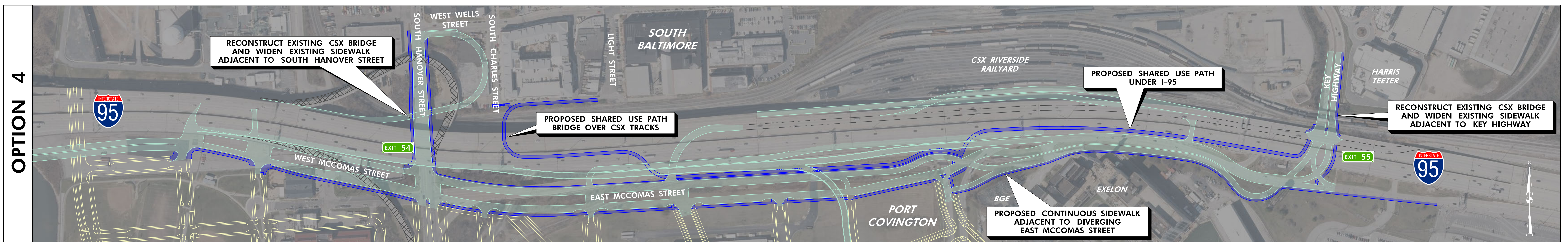
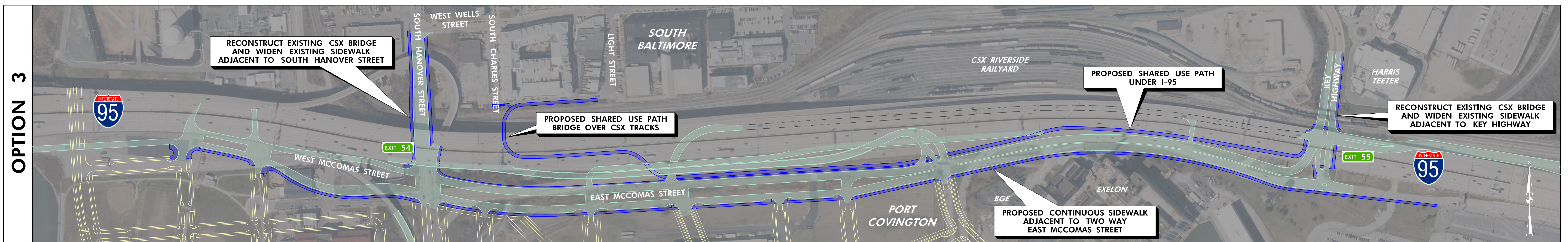
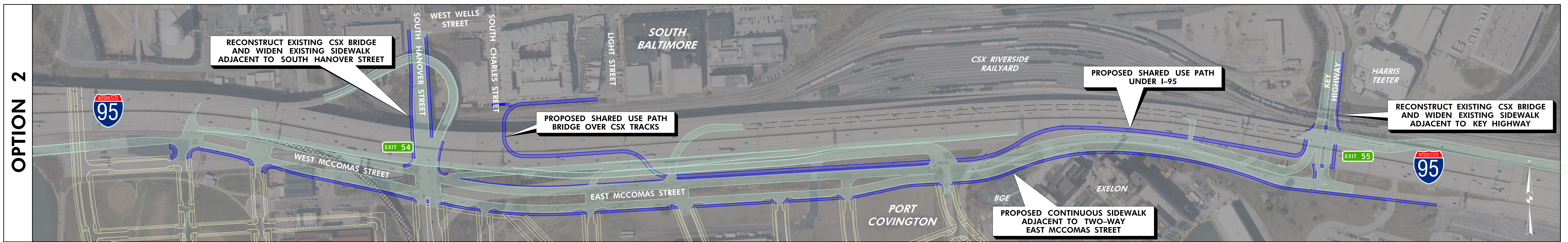
0 100 200  
GRAPHIC SCALE (FT)

# ELEMENT F – MCCOMAS STREET



# ELEMENT G – PEDESTRIANS & BICYCLISTS

# INTERSTATE 95 ACCESS IMPROVEMENTS STUDY



**LEGEND**

	PROPOSED ELEMENT OF I-95 ACCESS IMPROVEMENTS		OTHER ELEMENTS OF I-95 ACCESS IMPROVEMENTS		EXISTING ELEMENT TO BE MAINTAINED		EXISTING ELEMENT TO BE REMOVED		OTHER EXISTING ELEMENTS TO BE REMOVED		ROADWAY FEATURES TO BE BUILT BY OTHERS
--	--	--	--	--	-----------------------------------	--	--------------------------------	--	---------------------------------------	--	--

0 200 400