

Environmental Assessment Public Hearing

WEDNESDAY, APRIL 25, 2018

6 – 8 p.m.

National Federation of the Blind
200 Wells Street
Baltimore, MD 21230

SATURDAY, APRIL 28, 2018

10 a.m. – noon

Dr. Carter G. Woodson Elementary/Middle School
2501 Seabury Road
Baltimore, MD 21225

Sponsored by the:
Baltimore City Department of Transportation
Maryland Transportation Authority
Federal Highway Administration



U.S. Department of Transportation
Federal Highway Administration

Welcome to Today's Meeting

The Maryland Transportation Authority (MDTA) and Baltimore City Department of Transportation (Baltimore City DOT) are pleased you have joined us for a very important meeting! Today's meeting is an opportunity for you to learn about the I-95 Access Improvements project and to share your comments on the study and the Recommended Preferred Alternative. At today's meeting we encourage you to:

- **Review the maps and graphics.** These exhibits are on display in the meeting space. A map of the study corridor and the Recommended Preferred Alternative are also included in this handout.
- **Talk with study team representatives.** Ask any questions you may have about the proposed project. All project representatives are wearing name tags for easy identification.
- **Share your comments with us.** You can do this in several ways: by providing formal testimony during the formal hearing portion of the meeting; by submitting written comments at today's meeting or by contacting us by email, mail or through the project web page.

Purpose and Need

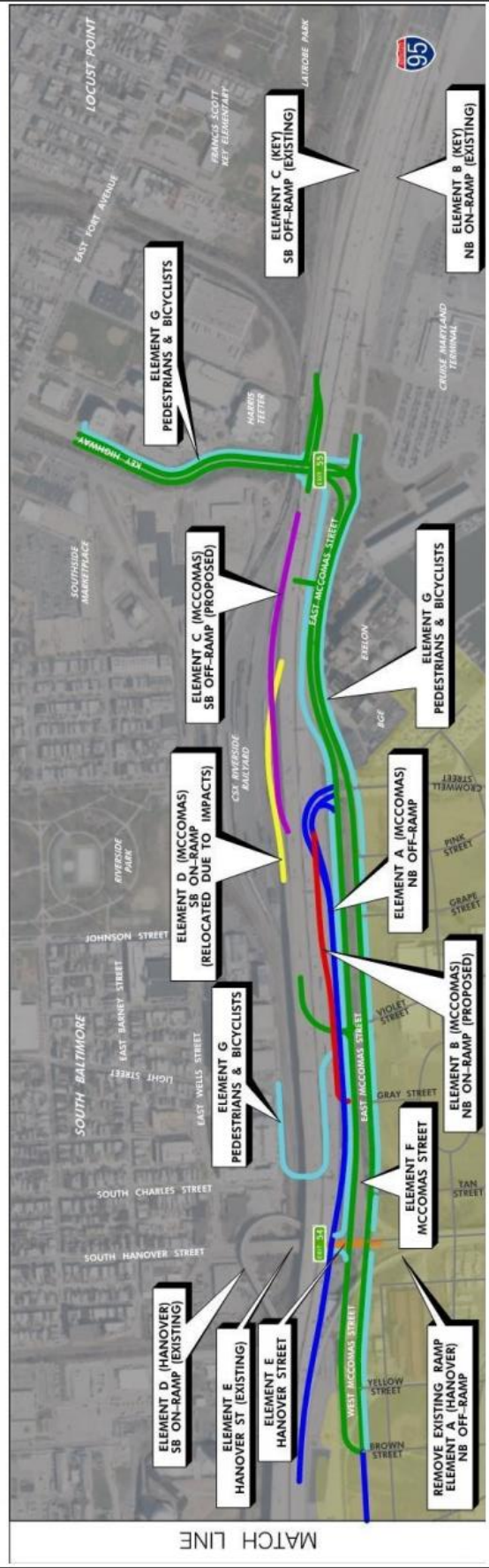
The purpose of the study is to address the following needs:

1. Ongoing and planned development in the Port Covington peninsula will result in **increased transportation demand** to Port Covington and increased traffic on I-95
2. Existing **capacity and roadway geometry not adequate** to meet projected traffic demands
3. Support for **economic development and land use changes** at Port Covington
4. **Limited multi-modal connections** around and across I-95 in the vicinity of Port Covington in Baltimore

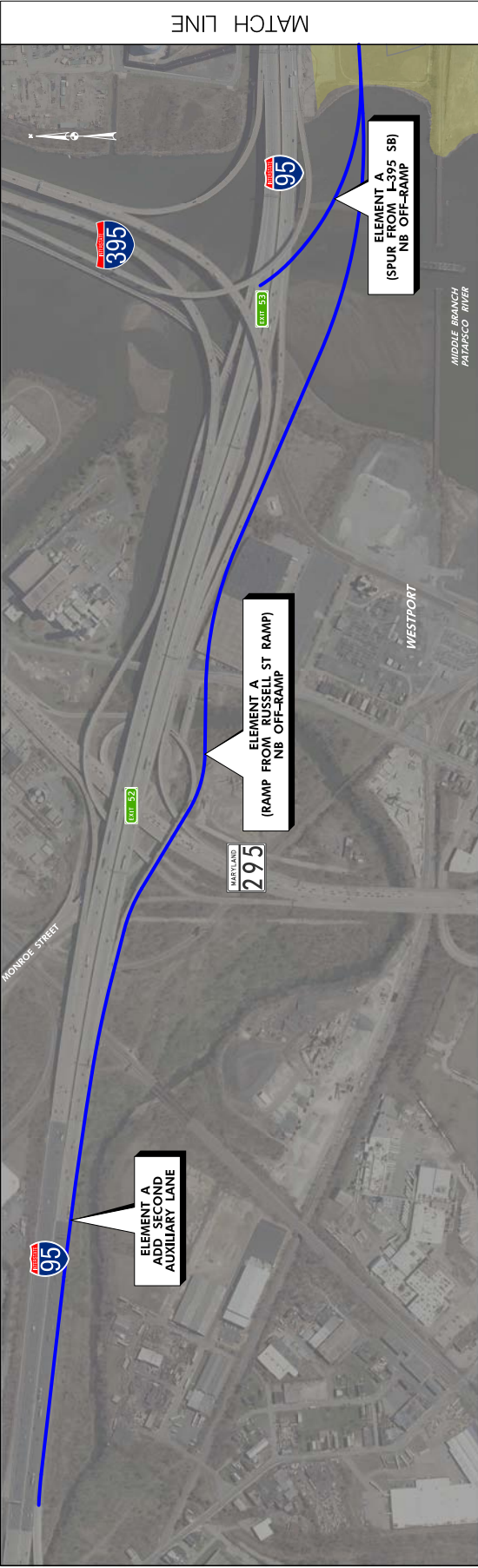
THE RECOMMENDED PREFERRED ALTERNATIVE INCLUDES:

- New I-95 northbound off ramps
- New I-95 northbound on ramps
- New I-95 southbound off ramps
- A realigned I-95 southbound on ramp from McComas Street
- Improvements to Hanover Street, north of McComas Street
- Improvements to McComas Street and Key Highway
- New pedestrian and bicycle connections

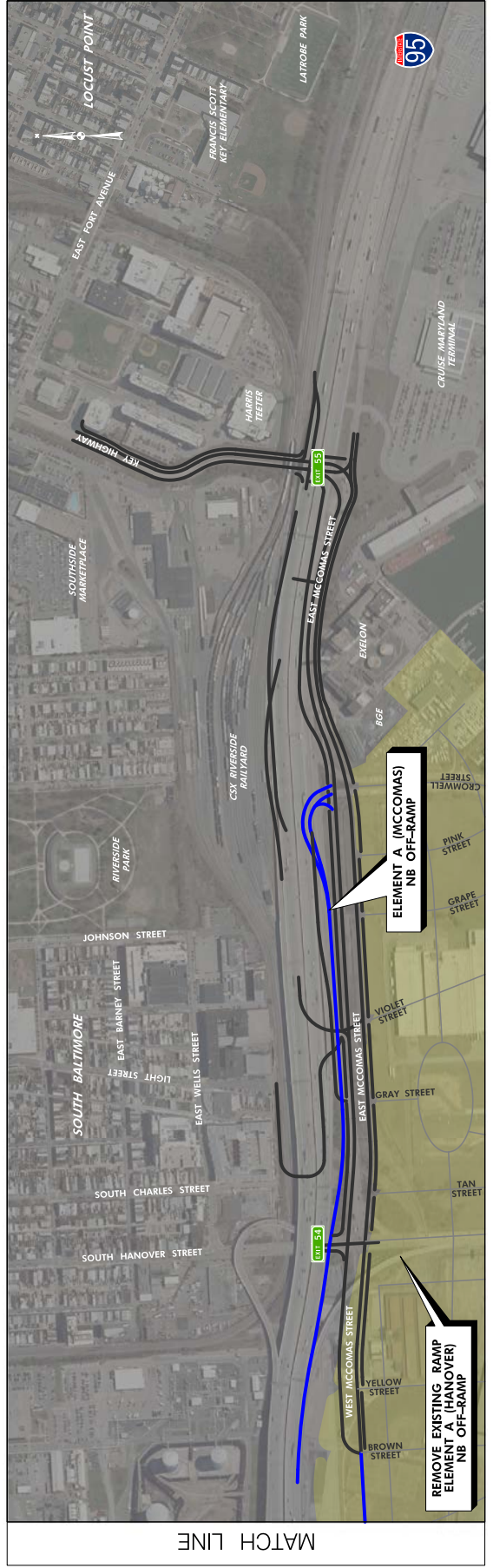
Recommended Preferred Alternative



Element A: I-95 Northbound Off-Ramps



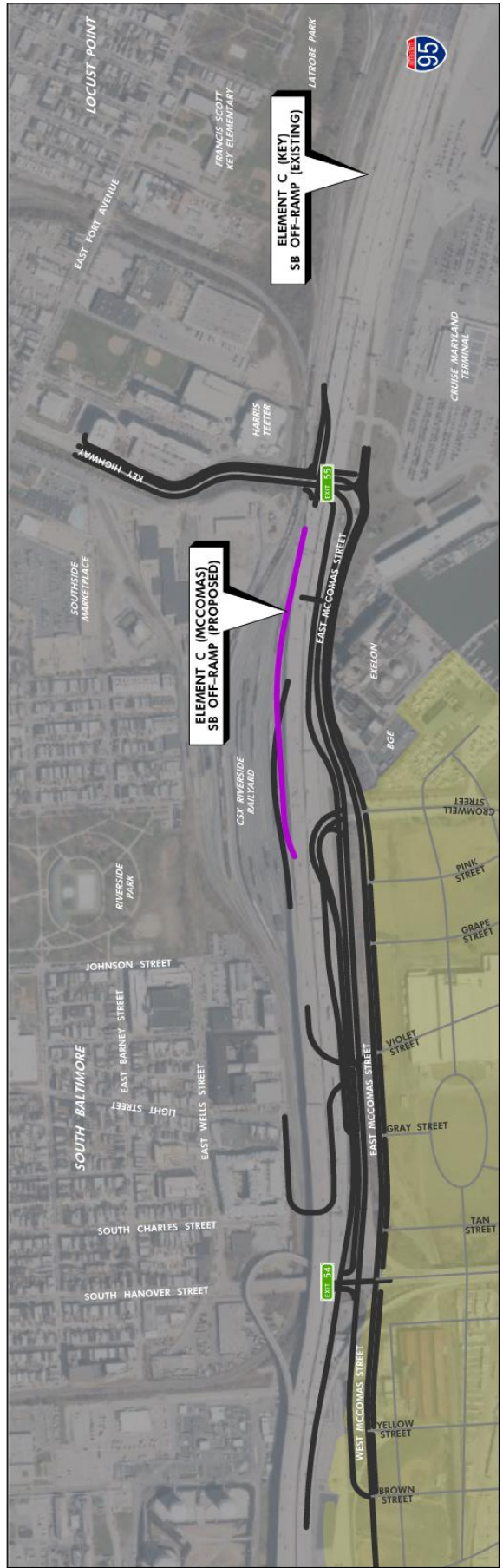
Element A: I-95 Northbound Off-Ramps



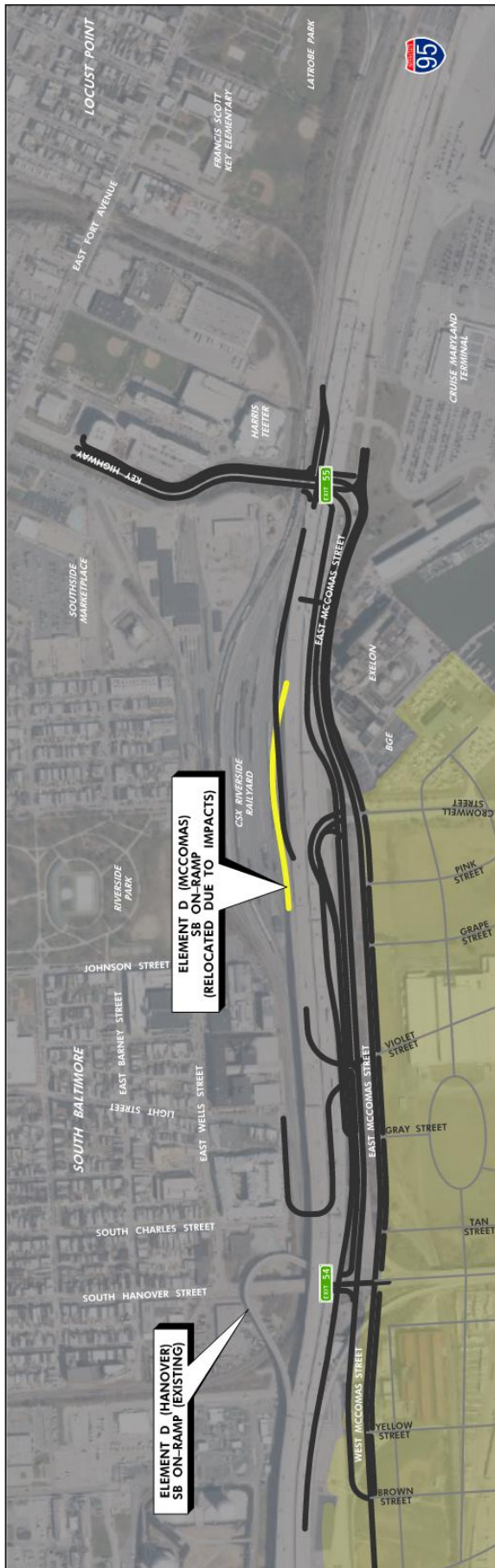
Element B: I-95 Northbound On-Ramps



Element C: I-95 Southbound Off-Ramps



Element D: I-95 Southbound On-Ramps



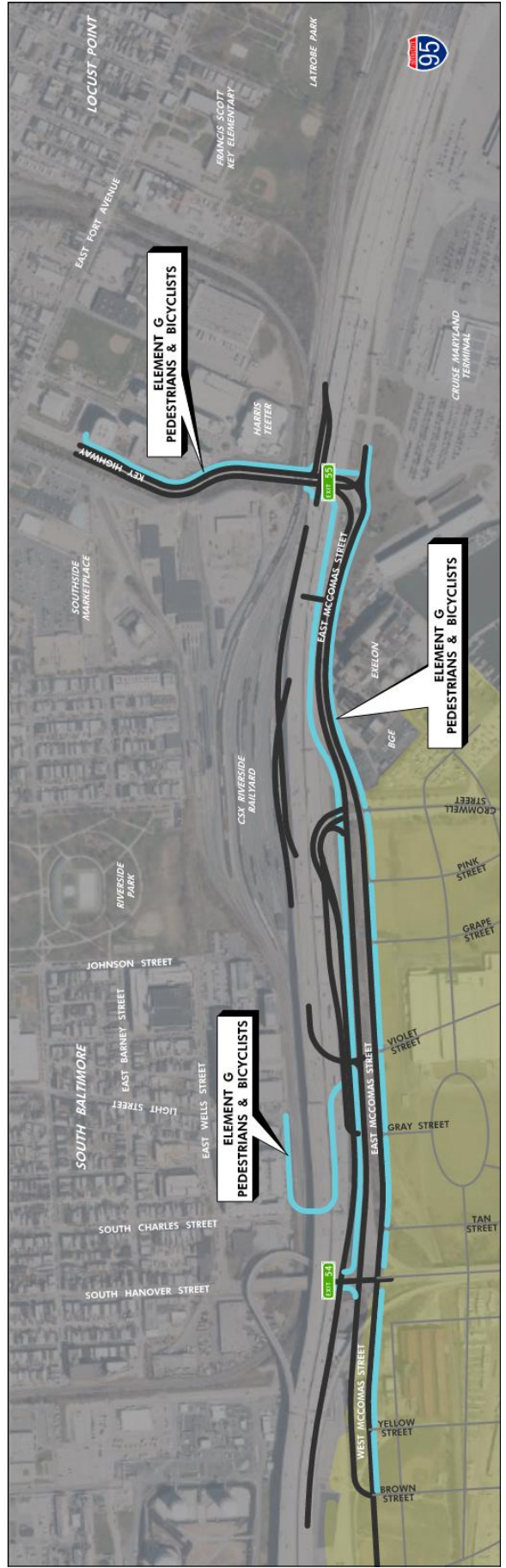
Element E: Hanover Street



Element F: McComas Street and Key Highway



Element G: Pedestrians and Bicycles



Estimated Project Costs

PROJECT ELEMENT	ESTIMATED TOTAL COST
Right-of-Way	\$15-\$20 million
A. NB I-95 Exit Movements	\$300-\$315 million
B. NB I-95 Entrance Movements	\$20-\$25 million
C. SB I-95 Exit Movements	\$25-\$30 million
D. SB I-95 Entrance Movements	\$10-\$15 million
E. Hanover Street North of McComas Street	\$0
F. McComas Street	\$60-\$65 million
G. Pedestrian and Bicycle Improvements	\$20-\$25 million
TOTAL	\$450-\$495 million

What is NEPA?

This project is following the Federal National Environmental Policy Act (NEPA) process. Federal agencies must comply with NEPA before they make decisions about actions that could result in adverse effects on the human and natural environment. NEPA requires Federal agencies to determine if their proposed actions may have significant adverse environmental effects and to consider the environmental and related social and economic effects of their proposed actions. The NEPA process calls for the evaluation of reasonable alternatives to a proposed Federal action; solicitation of input from organizations and individuals that could potentially be affected; and the presentation of direct, indirect and cumulative environmental impacts.

We analyzed potential effects in many categories:

- Air Quality
- Construction Impacts
- Contaminated Materials
- Cultural Resources: Historic Structures, Archeological Resources
- Environmental Justice
- Indirect and Cumulative Effects
- Land Use
- Natural Environmental: Wetlands, Streams and Water Resources
- Noise
- Socio-Economic: Community Resources, Neighborhoods, and Community Cohesion
- Visual Character

The findings indicate no significant adverse impacts anticipated in any analysis category.

Project Timeline

MILESTONE	TIME
Project kick-off Public Meetings	Fall 2016
Identify Alternatives	Fall 2016
Environmental Analyses	Fall 2016 – Fall 2017
Publish Environmental Assessment (EA)	March 2018
Public Hearings (TODAY)	April 2018
Public Comment Period Closes	May 18, 2018
Respond to Comments	Summer 2018
Final EA/Finding of No Significant Impact	Summer 2018

Next Steps

The public comment period closes on May 18, 2018. We want to hear from you! Following the public hearing, MDTA and Baltimore City DOT will again review all public and agency comments and then make a final decision about the best alternative, or “Preferred Alternative” for the project.

STAY INVOLVED!

Please visit the Project webpage at mdta.maryland.gov/Capital_Projects/I-95_Access_Study/Home.html for up to date project information or email us at I-95AccessStudy@mdta.maryland.gov.

We look forward to your continued participation in this project. Please contact the study team at any time with questions, comments, or concerns. I-95AccessStudy@mdta.maryland.gov

Ms. Melissa Bogdan
Community Relations Project Manager
Division of Project Planning and Program Development
Maryland Transportation Authority
2310 Broening Highway
Baltimore, MD 21224
410.537.5675

Ms. Nikia Mack
Community Liaison Officer
Baltimore City Department of Transportation
417 East Fayette Street, 5th Floor
Baltimore, MD 21202
443.984.4095

Mr. Russell Walto
Planning & Community Relations Manager
Division of Project Planning and Program Development
Maryland Transportation Authority
2310 Broening Highway
Baltimore, MD 21224
410.537.5670