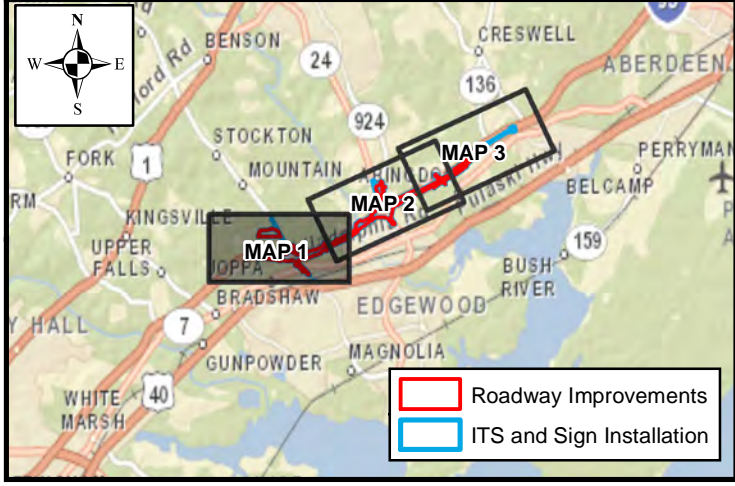


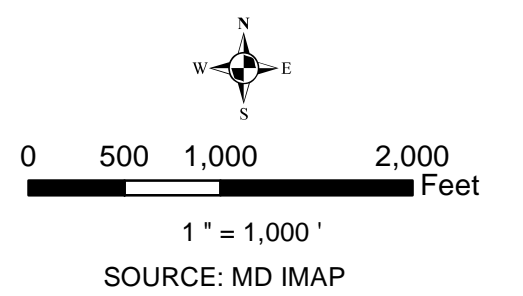
I-95 ETL NORTHBOUND EXTENSION PHASE II ROADWAY IMPROVEMENTS VICINITY MAP 1

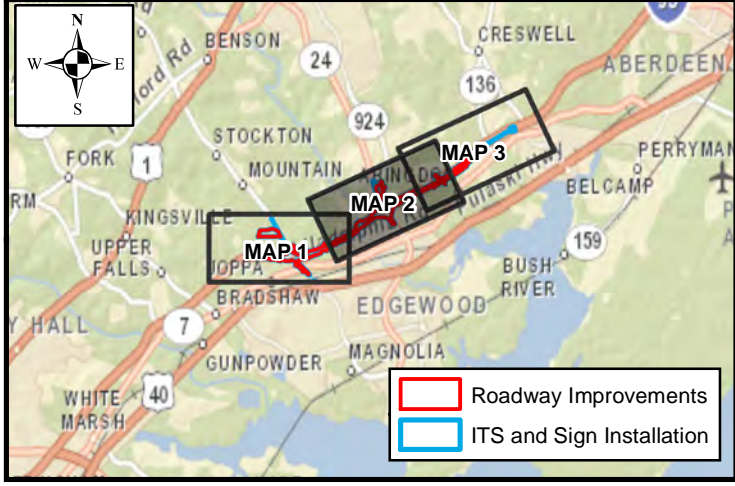
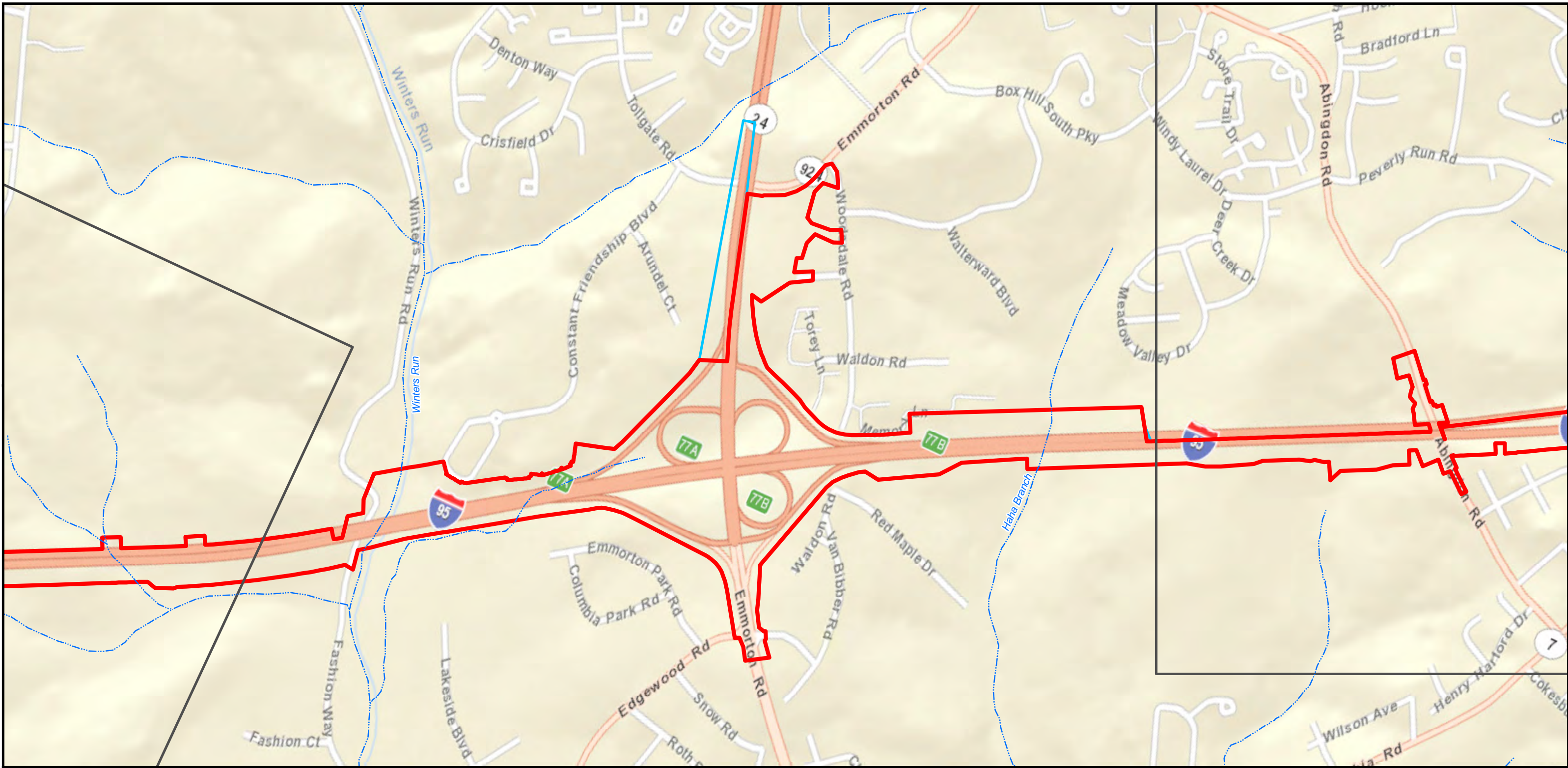


- Legend**
- Roadway Improvements
 - ITS and Sign Installation
 - USGS Mapped Streams



DATE: JULY 2019



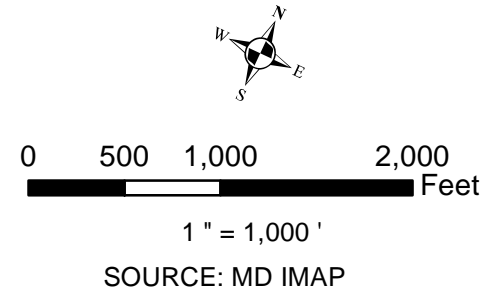


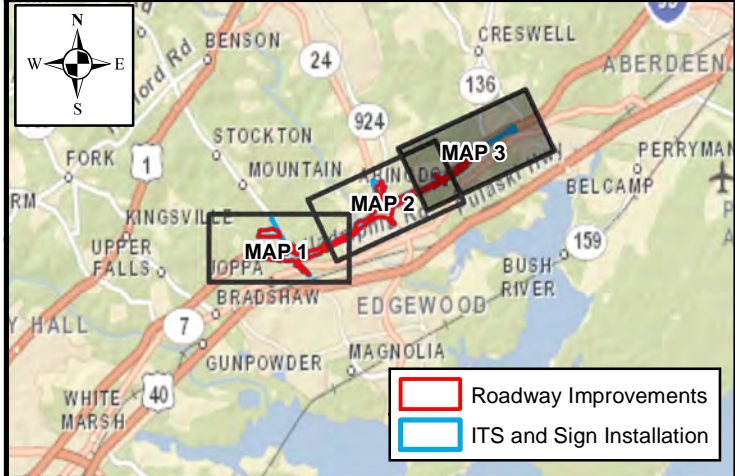
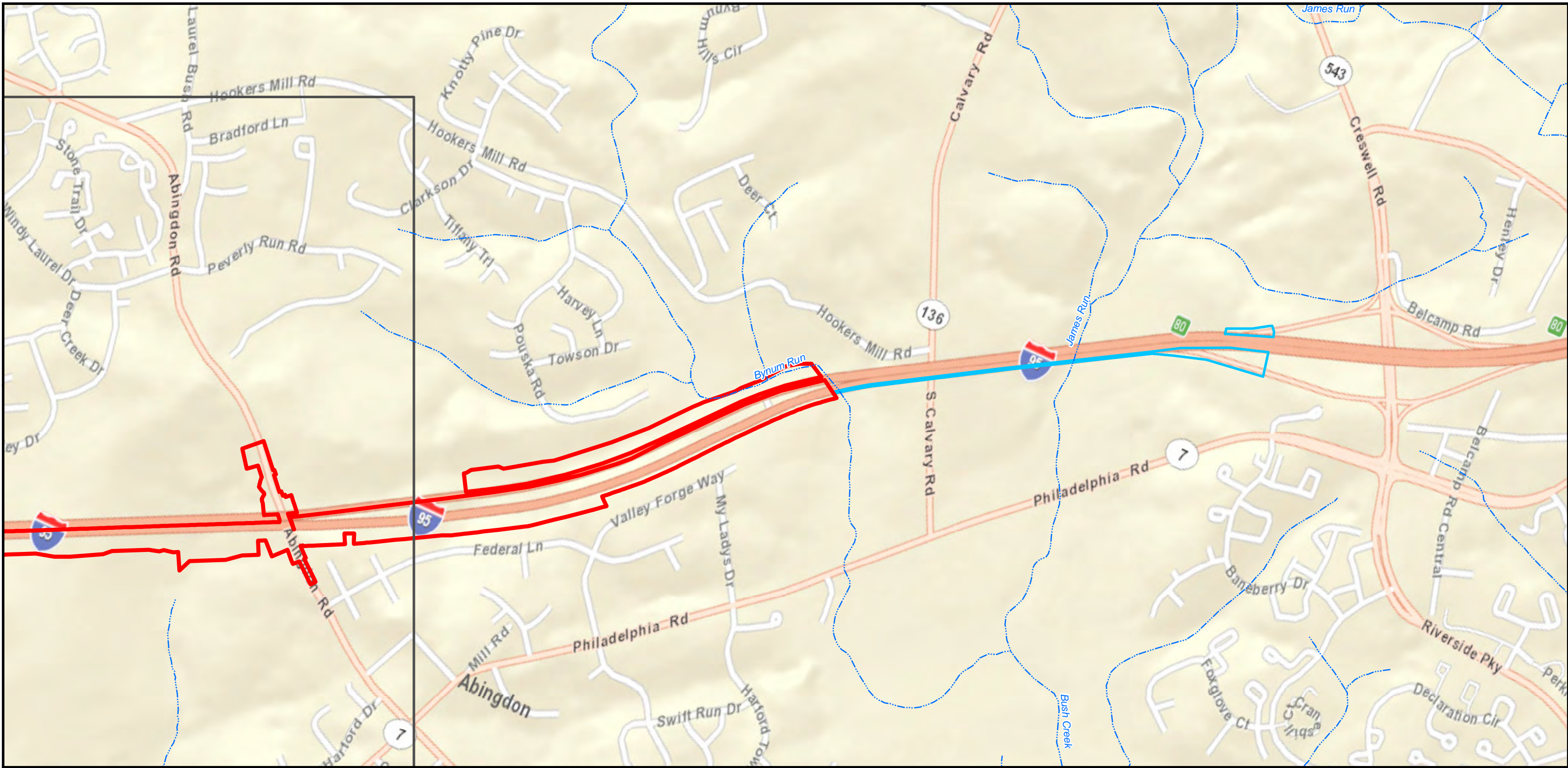
I-95 ETL NORTHBOUND EXTENSION PHASE II ROADWAY IMPROVEMENTS VICINITY MAP 2

- Legend**
- Roadway Improvements
 - ITS and Sign Installation
 - USGS Mapped Streams



DATE: JULY 2019



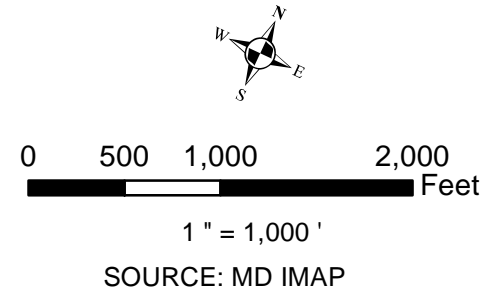


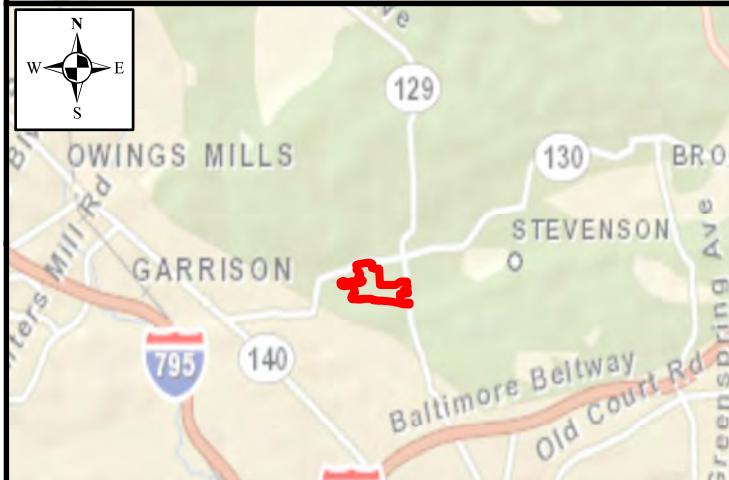
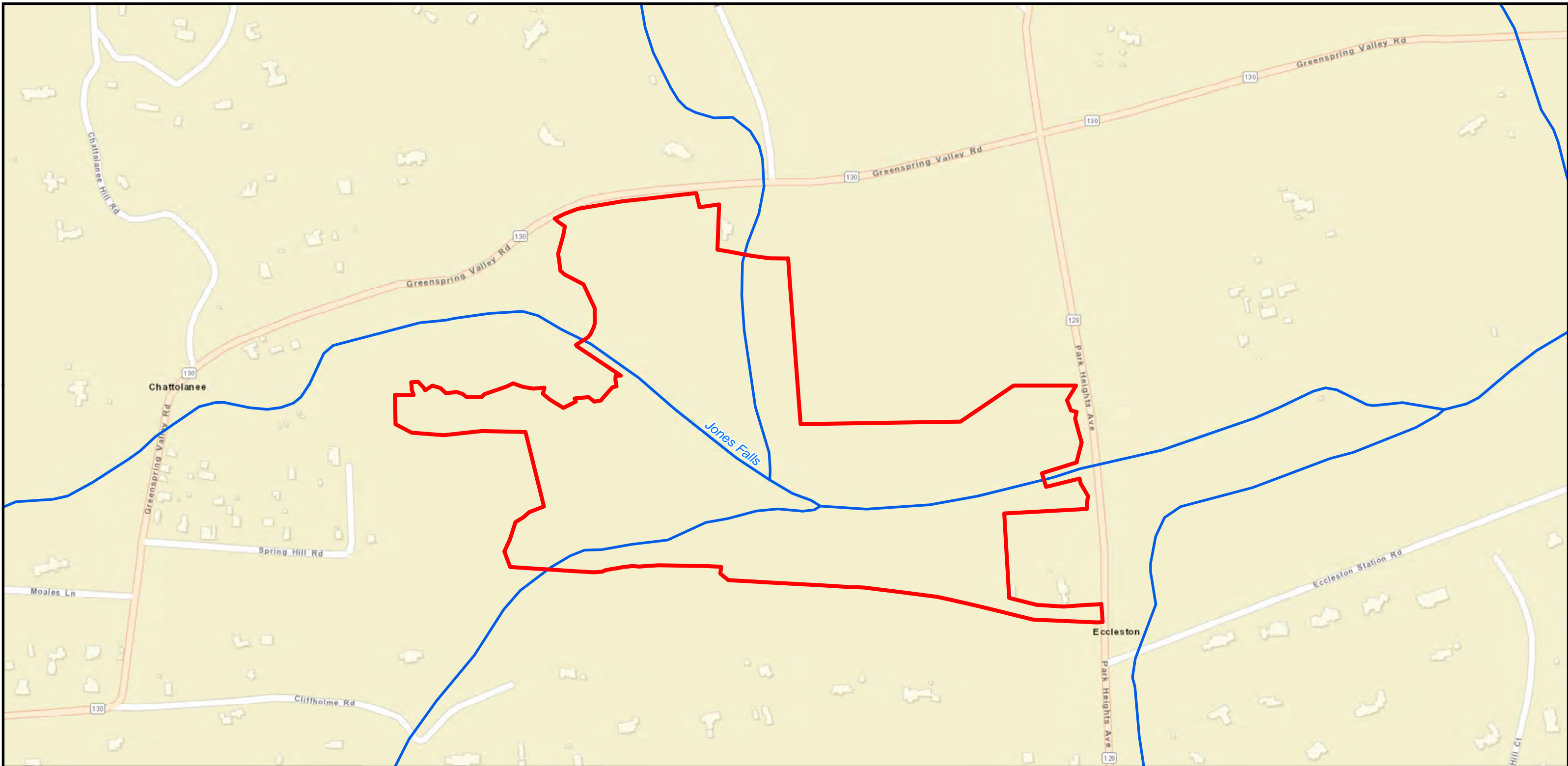
I-95 ETL NORTHBOUND EXTENSION PHASE II ROADWAY IMPROVEMENTS VICINITY MAP 3

- Legend**
- Roadway Improvements
 - ITS and Sign Installation
 - USGS Mapped Streams



DATE: JULY 2019





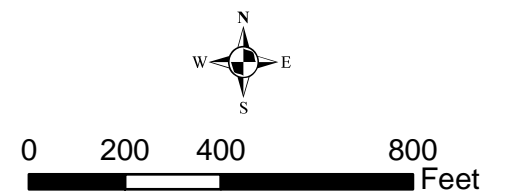
I-95 ETL NORTHBOUND EXTENSION PHASE II MITIGATION SITE VICINITY MAP: ECCLESTON

Legend

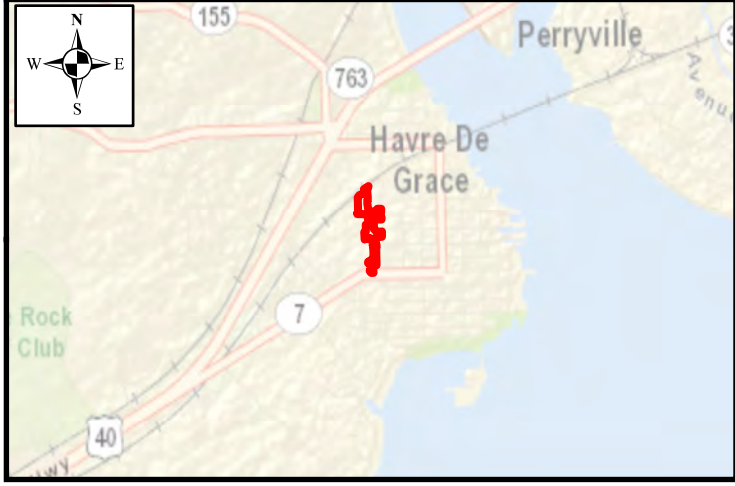
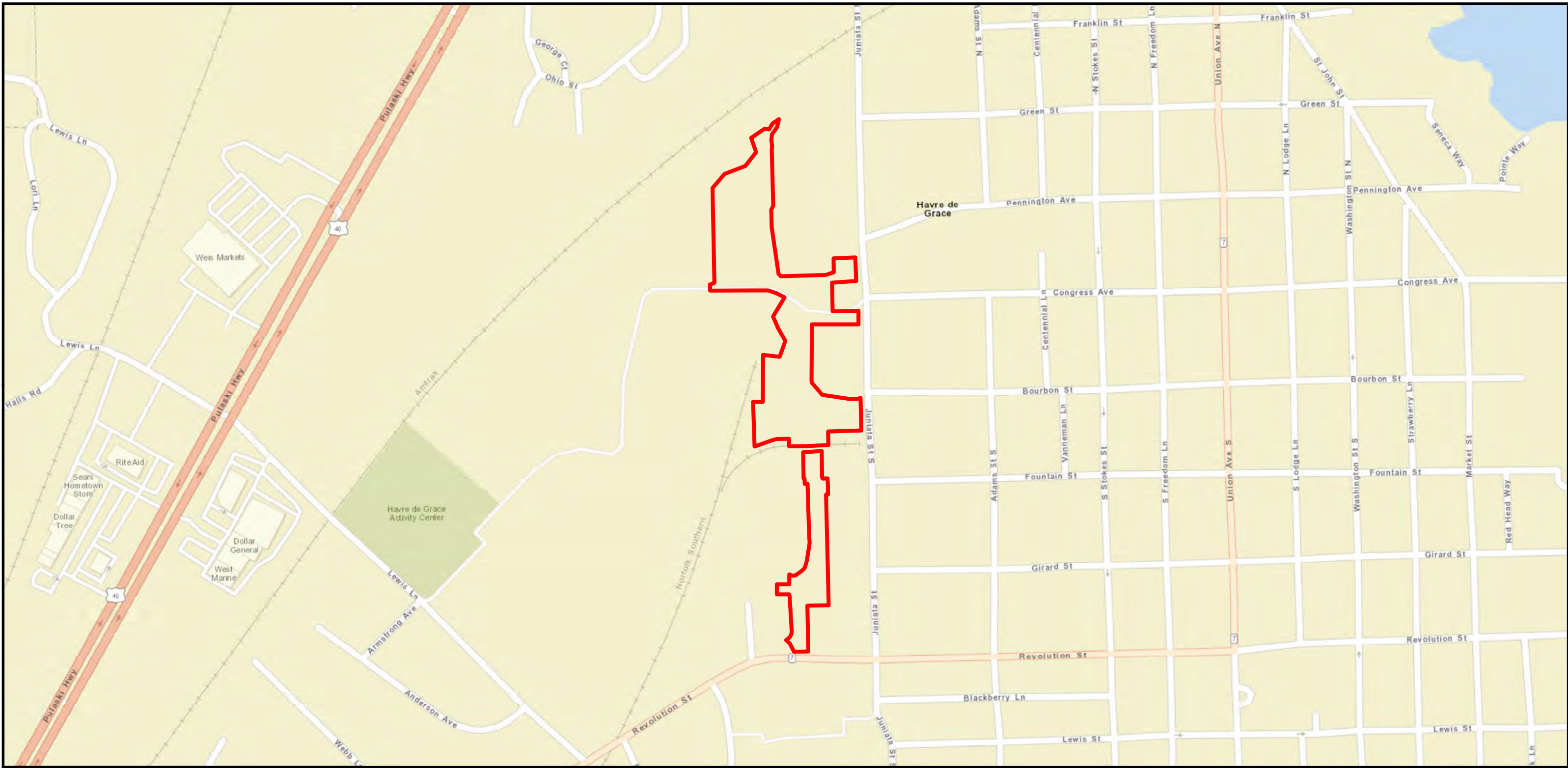
- Approximate Mitigation Site
- USGS Mapped Streams



DATE: JULY 2019



SOURCE: ESRI, BALTIMORE COUNTY

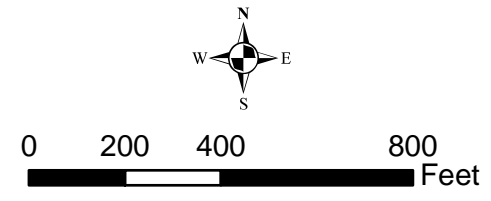


I-95 ETL NORTHBOUND EXTENSION PHASE II MITIGATION SITE VICINITY MAP: LILLY RUN

- Legend**
- Approximate Mitigation Site
 - USGS Mapped Streams



DATE: JULY 2019



1" = 400'
SOURCE: ESRI, HARFORD COUNTY