

IMPACT PLATE KEYMAP

**I-95 ETL NORTHBOUND EXTENSION
PHASE II
ECCLESTON MITIGATION SITE
BALTIMORE COUNTY, MARYLAND**



**MARYLAND
TRANSPORTATION AUTHORITY**

CONTRACT NO.: KH-30XX

SCALE: 1" = 400'

DATE: JULY 2019

FILE: Q:\2017\1710977_001_Eccleston_Mitigation\CADD\N&CR\Plates\KEYMAP.dgn
DATE: Monday, July 22, 2019 AT 10:49 AM

EXISTING 100-YEAR FLOODPLAIN



WETLAND



WETLAND BUFFER



WATERS OF THE US



HEDGE /TREE LINE



PROPERTY BOUNDARY



EXISTING GROUND CONTOURS (1')



PROPOSED GROUND CONTOURS (1')



LIMIT OF DISTURBANCE



ROCK CROSS VANE



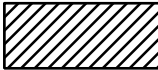
STREAM IMPACTS PERMANENT



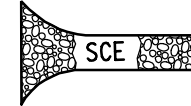
WETLAND IMPACTS PERMANENT



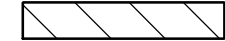
WETLAND IMPACTS TEMPORARY



STABILIZED CONSTRUCTION ENTRANCE



ACCESS ROAD



STAGING AND STOCKPILE AREA



PROPOSED STREAM CHANNEL CENTERLINE



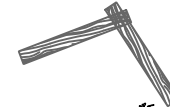
LOG VANE



BOULDERS



ROCK AND ROLL LOGS



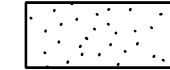
LOG VANE WITH ROCK J HOOK



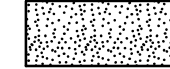
LIVE FASCINE



BUFFER IMPACTS TEMPORARY



BUFFER IMPACTS PERMANENT



EXISTING PIPE



LEGEND

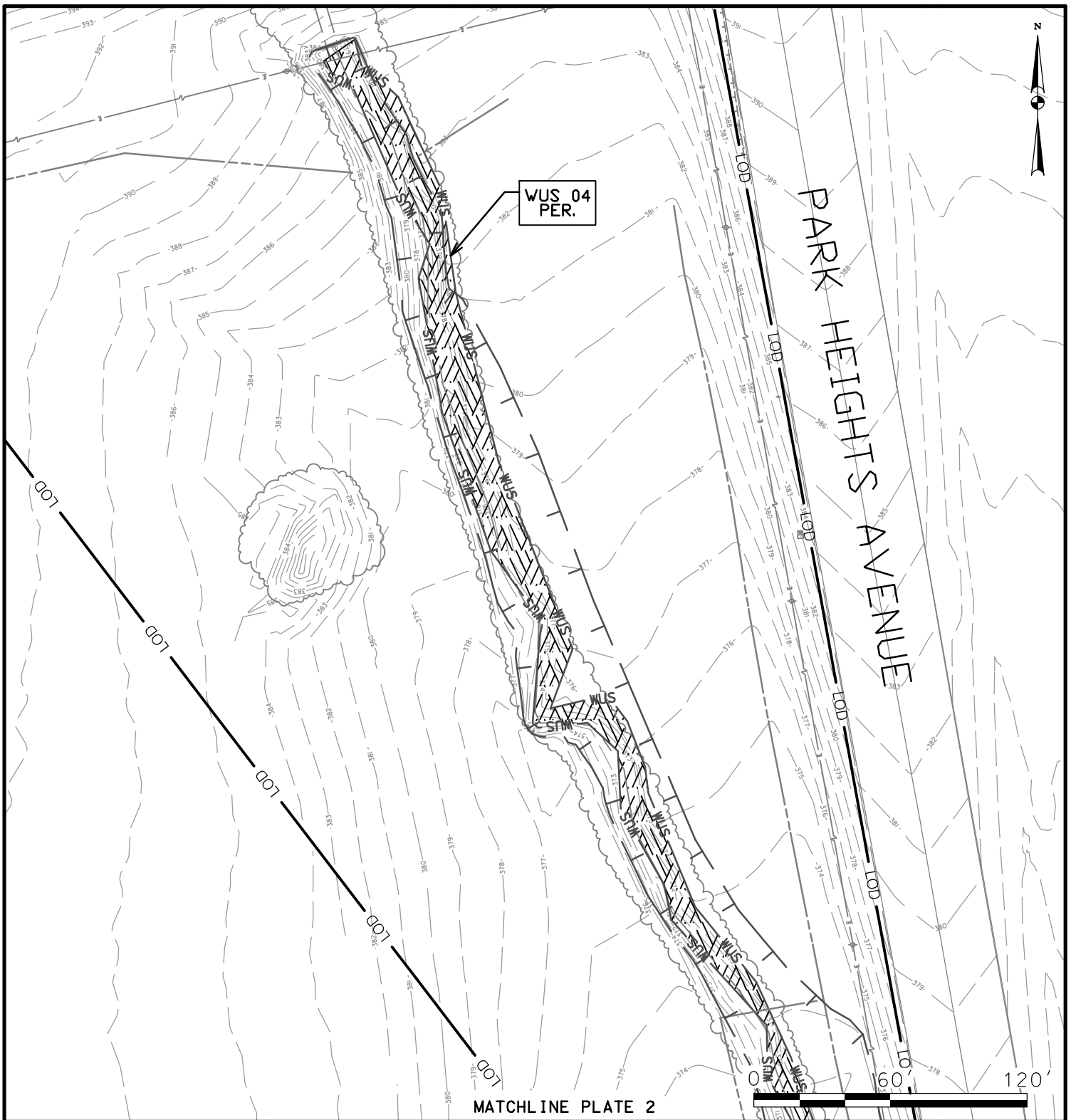
ECCLESTON MITIGATION
SITE
BALTIMORE COUNTY, MD



**MARYLAND
TRANSPORTATION AUTHORITY**

SCALE: N.T.S.

DATE: JULY 2019



IMPACTS ON THIS PLATE

	TEMPORARY		PERMANENT	
PFO WETLAND	0	SF	0	SF
PSS WETLAND	0	SF	0	SF
PEM WETLAND	0	SF	0	SF
PERENNIAL WUS	0	LF/SF	549/6,963	LF/SF
INTERMITTENT WUS	0	LF/SF	0	LF/SF
EPHEMERAL WUS	0	LF/SF	0	LF/SF
WETLAND BUFFER	0	SF	0	SF
100-YEAR FLOODPLAIN	10,459	SF	0	SF

*100-YEAR FLOODPLAIN IMPACTS ARE NOT HATCHED

WETLAND IMPACT PLATE

I-95 ETL NORTHBOUND EXTENSION
 PHASE II
 ECCLESTON MITIGATION SITE
 BALTIMORE COUNTY, MARYLAND



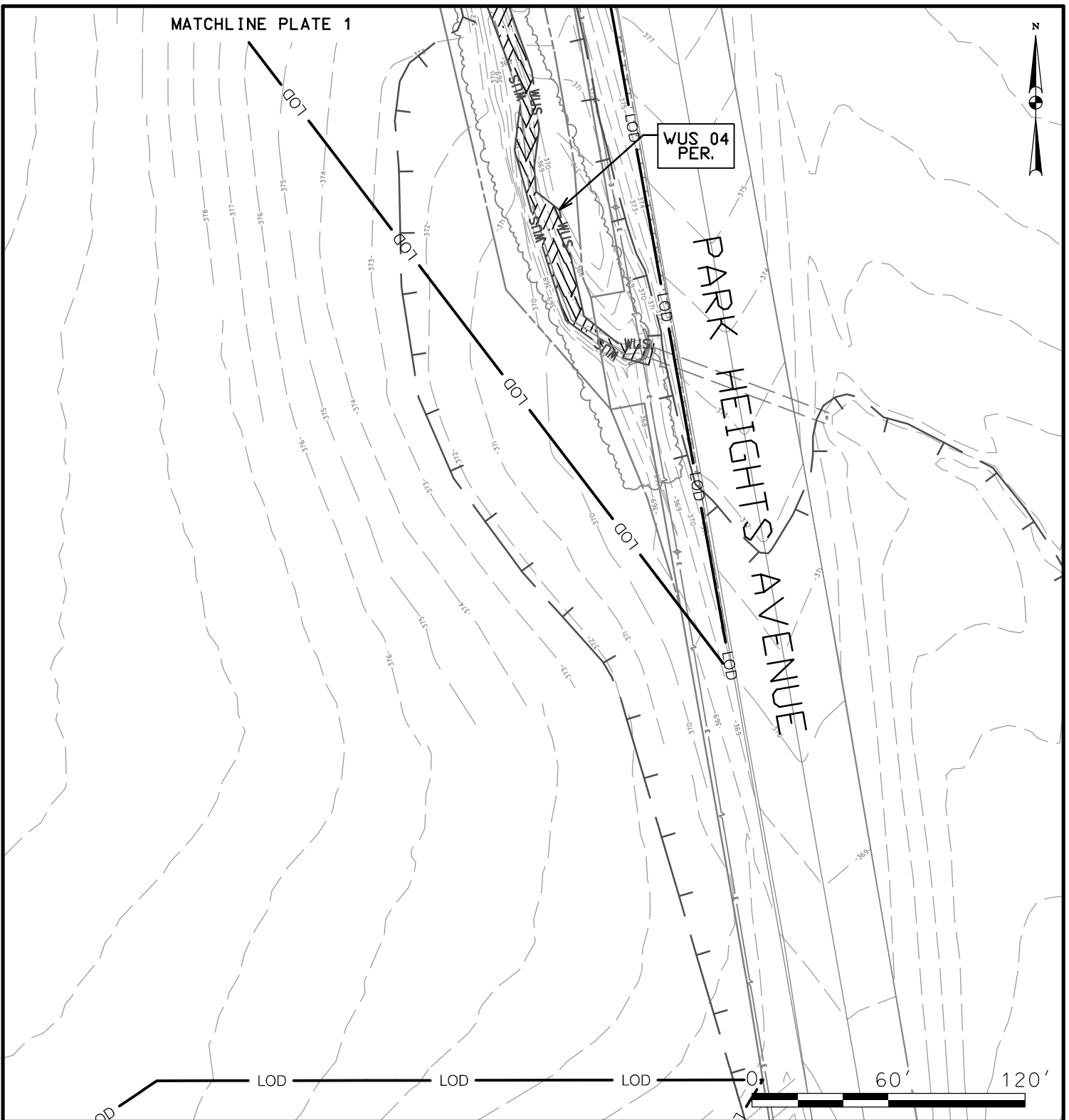
**MARYLAND
 TRANSPORTATION AUTHORITY**

SCALE: 1" = 60'

CONTRACT NO.: KH-30XX

DATE: JULY 2019

PLATE 1 OF 14



IMPACTS ON THIS PLATE

	TEMPORARY		PERMANENT	
	0	SF	0	SF
PFO WETLAND	0	SF	0	SF
PSS WETLAND	0	SF	0	SF
PEM WETLAND	0	SF	0	SF
PERENNIAL WUS	0	LF/SF	186/1,494	LF/SF
INTERMITTENT WUS	0	LF/SF	0	LF/SF
EPHEMERAL WUS	0	LF/SF	0	LF/SF
WETLAND BUFFER	0	SF	0	SF
100-YEAR FLOODPLAIN	17,357	SF	0	SF

*100-YEAR FLOODPLAIN IMPACTS ARE NOT HATCHED

WETLAND IMPACT PLATE

I-95 ETL NORTHBOUND EXTENSION
 PHASE II
 ECCLESTON MITIGATION SITE
 BALTIMORE COUNTY, MARYLAND



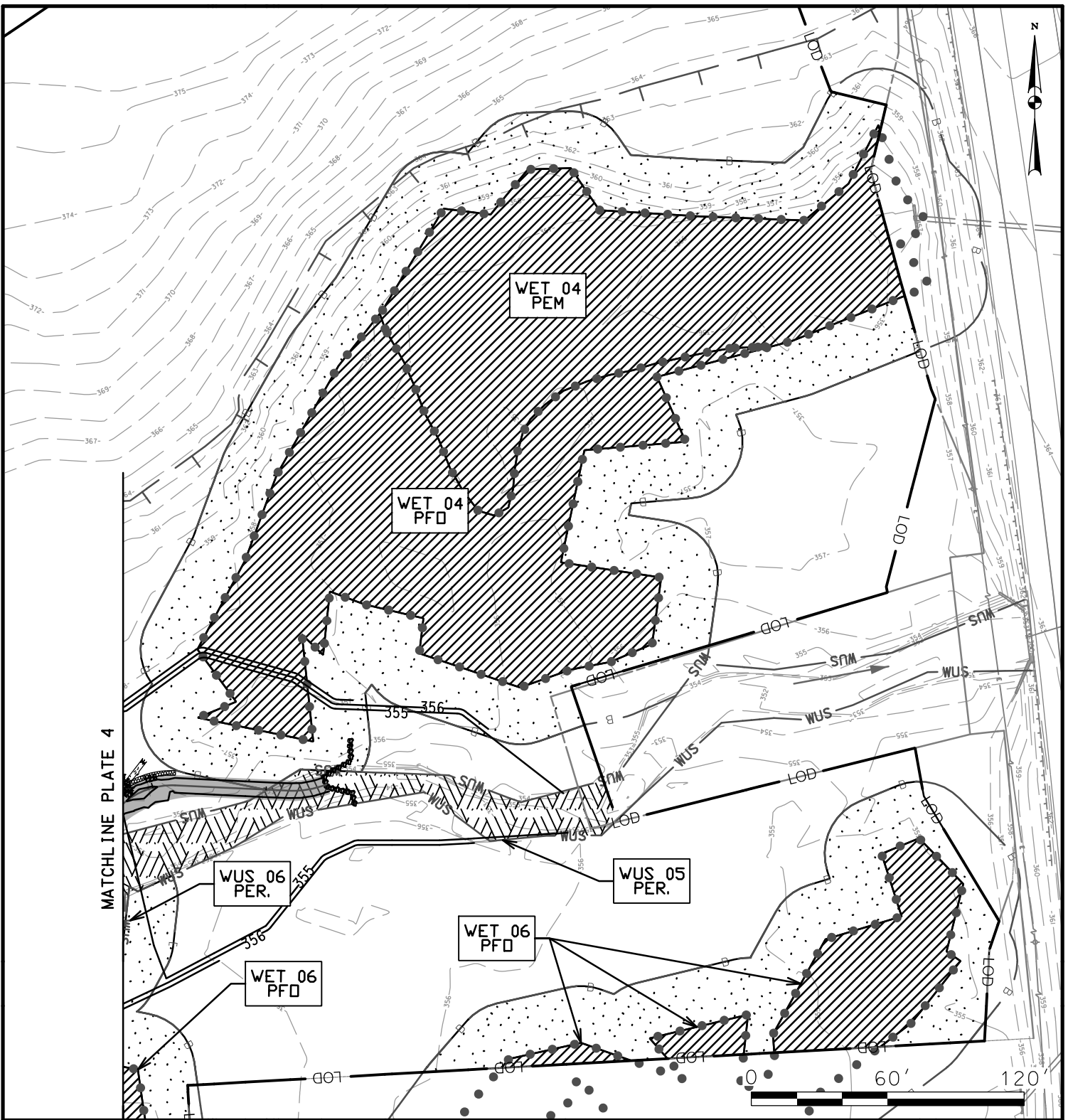
**MARYLAND
 TRANSPORTATION AUTHORITY**

SCALE: 1" = 60'

CONTRACT NO.: KH-30XX

DATE: JULY 2019

PLATE 2 OF 14



IMPACTS ON THIS PLATE

	TEMPORARY		PERMANENT	
PFO WETLAND	23,930	SF	0	SF
PSS WETLAND	0	SF	0	SF
PEM WETLAND	16,917	SF	0	SF
PERENNIAL WUS	0	LF/SF	237/3,883	LF/SF
INTERMITTENT WUS	0	LF/SF	0	LF/SF
EPHEMERAL WUS	0	LF/SF	0	LF/SF
WETLAND BUFFER	37,112	SF	0	SF
100-YEAR FLOODPLAIN	123,418	SF	0	SF

*100-YEAR FLOODPLAIN IMPACTS ARE NOT HATCHED

WETLAND IMPACT PLATE

I-95 ETL NORTHBOUND EXTENSION
 PHASE II
 ECCLESTON MITIGATION SITE
 BALTIMORE COUNTY, MARYLAND



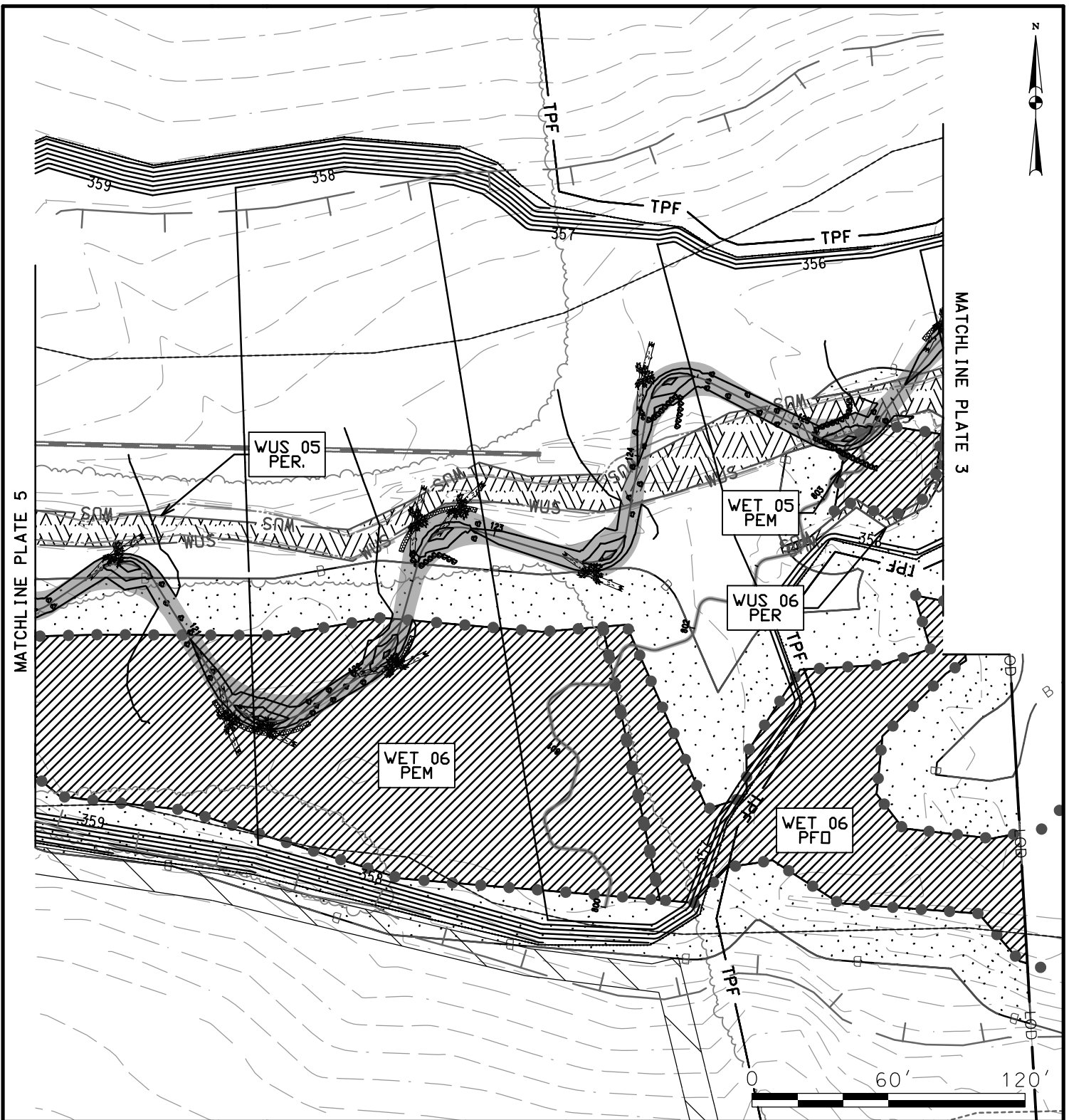
**MARYLAND
 TRANSPORTATION AUTHORITY**

SCALE: 1" = 60'

CONTRACT NO.: KH-30XX

DATE: JULY 2019

PLATE 3 OF 14



IMPACTS ON THIS PLATE

	TEMPORARY		PERMANENT	
PFO WETLAND	11,608	SF	0	SF
PSS WETLAND	0	SF	0	SF
PEM WETLAND	26,760	SF	0	SF
PERENNIAL WUS	0	LF/SF	504/6,523	LF/SF
INTERMITTENT WUS	0	LF/SF	0	LF/SF
EPHEMERAL WUS	0	LF/SF	0	LF/SF
WETLAND BUFFER	29,759	SF	0	SF
100-YEAR FLOODPLAIN	136,809	SF	0	SF

*100-YEAR FLOODPLAIN IMPACTS ARE NOT HATCHED

WETLAND IMPACT PLATE

I-95 ETL NORTHBOUND EXTENSION
 PHASE II
 ECCLESTON MITIGATION SITE
 BALTIMORE COUNTY, MARYLAND



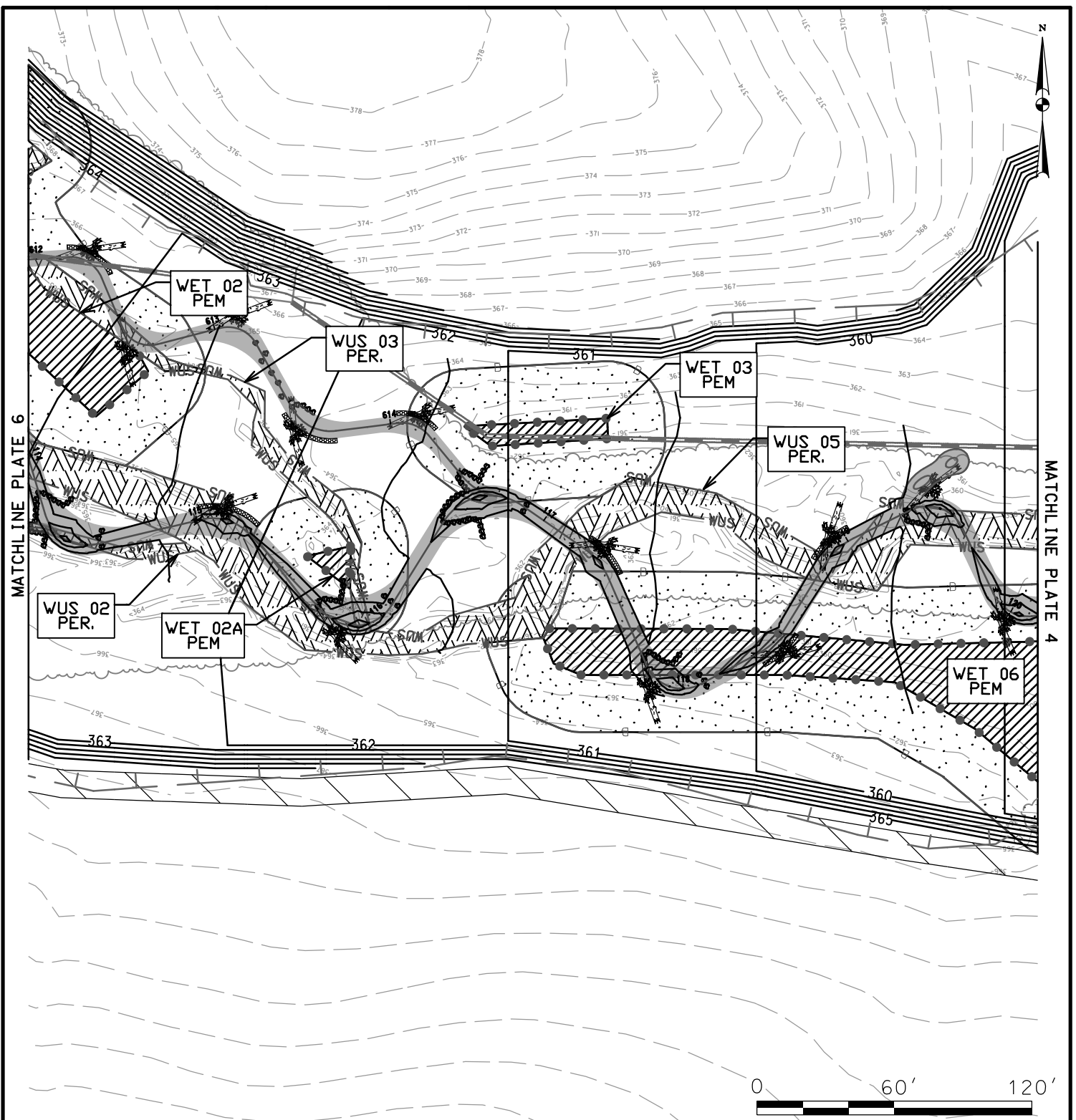
**MARYLAND
 TRANSPORTATION AUTHORITY**

SCALE: 1" = 60'

CONTRACT NO.: KH-30XX

DATE: JULY 2019

PLATE 4 OF 14



IMPACTS ON THIS PLATE

	TEMPORARY		PERMANENT	
		SF		SF
PFO WETLAND	0	SF	0	SF
PSS WETLAND	0	SF	0	SF
PEM WETLAND	7,452	SF	0	SF
PERENNIAL WUS	0	LF/SF	815/10,215	LF/SF
INTERMITTENT WUS	0	LF/SF	0	LF/SF
EPHEMERAL WUS	0	LF/SF	0	LF/SF
WETLAND BUFFER	24,157	SF	0	SF
100-YEAR FLOODPLAIN	83,693	SF	0	SF

*100-YEAR FLOODPLAIN IMPACTS ARE NOT HATCHED

WETLAND IMPACT PLATE

I-95 ETL NORTHBOUND EXTENSION
 PHASE II
 ECCLESTON MITIGATION SITE
 BALTIMORE COUNTY, MARYLAND



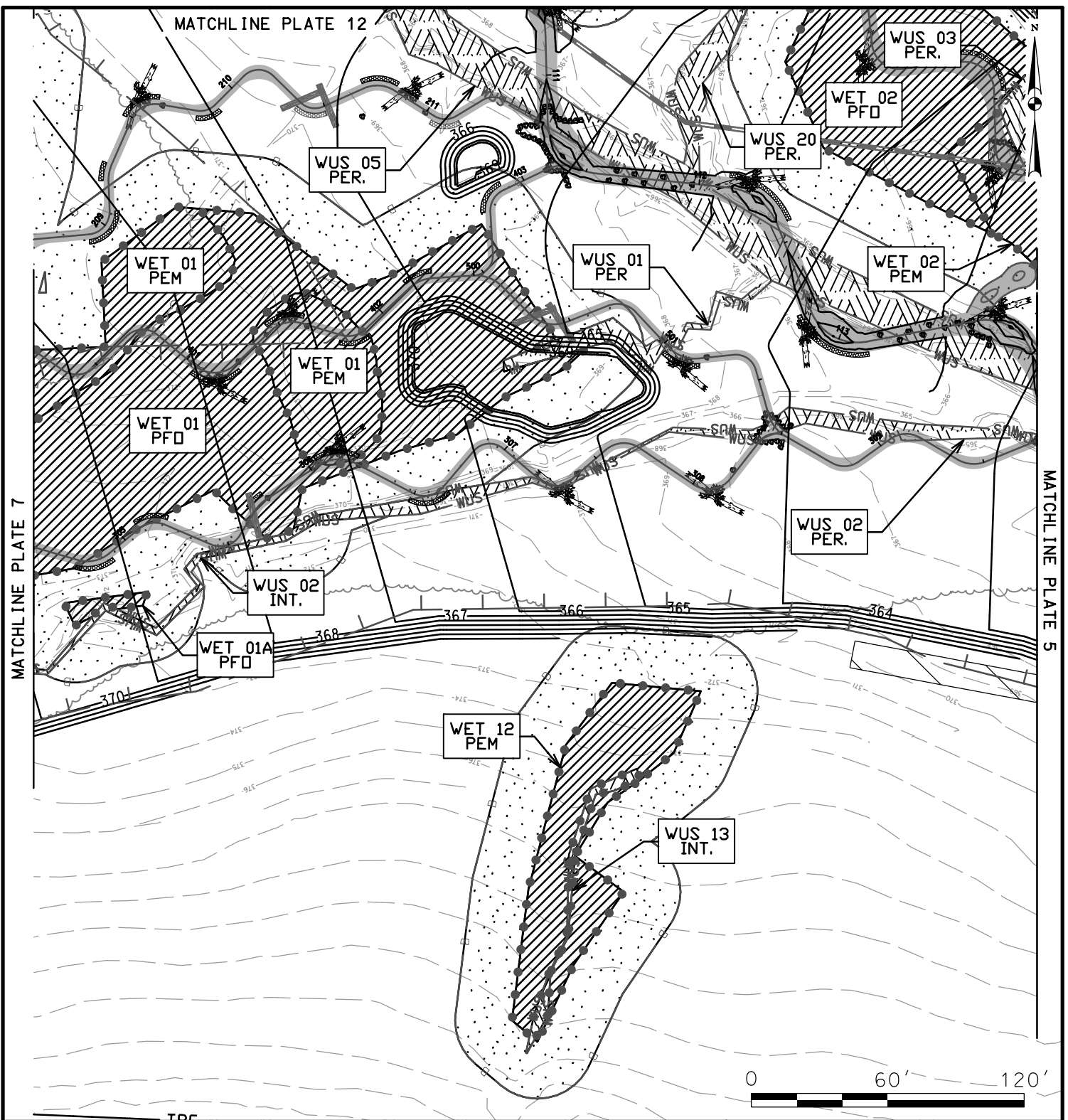
**MARYLAND
 TRANSPORTATION AUTHORITY**

SCALE: 1" = 60'

CONTRACT NO.: KH-30XX

DATE: JULY 2019

PLATE 5 OF 14



IMPACTS ON THIS PLATE

	TEMPORARY		PERMANENT	
PFO WETLAND	23,276	SF	0	SF
PSS WETLAND	0	SF	0	SF
PEM WETLAND	11,674	SF	0	SF
PERENNIAL WUS	0	LF/SF	935/8,836	LF/SF
INTERMITTENT WUS	0	LF/SF	289/741	LF/SF
EPHEMERAL WUS	0	LF/SF	0	LF/SF
WETLAND BUFFER	36,757	SF	0	SF
100-YEAR FLOODPLAIN	72,747	SF	0	SF

*100-YEAR FLOODPLAIN IMPACTS ARE NOT HATCHED

WETLAND IMPACT PLATE

I-95 ETL NORTHBOUND EXTENSION
 PHASE II
 ECCLESTON MITIGATION SITE
 BALTIMORE COUNTY, MARYLAND



**MARYLAND
 TRANSPORTATION AUTHORITY**

SCALE: 1" = 60'

CONTRACT NO.: KH-30XX

DATE: JULY 2019

PLATE 6 OF 14

WET 01
PSS

WET 01
PEM

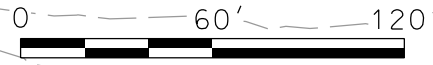
WUS 01
PER.

WET 01
PFD

WUS 02
INT.

MATCHLINE PLATE 8

MATCHLINE PLATE 6



IMPACTS ON THIS PLATE

	TEMPORARY		PERMANENT	
PFO WETLAND	7,118	SF	0	SF
PSS WETLAND	6,011	SF	0	SF
PEM WETLAND	11,079	SF	0	SF
PERENNIAL WUS	0	LF/SF	356/1,652	LF/SF
INTERMITTENT WUS	0	LF/SF	82/216	LF/SF
EPHEMERAL WUS	0	LF/SF	0	LF/SF
WETLAND BUFFER	17,053	SF	0	SF
100-YEAR FLOODPLAIN	60,725	SF	0	SF

*100-YEAR FLOODPLAIN IMPACTS ARE NOT HATCHED

WETLAND IMPACT PLATE

I-95 ETL NORTHBOUND EXTENSION
PHASE II
ECCLESTON MITIGATION SITE
BALTIMORE COUNTY, MARYLAND



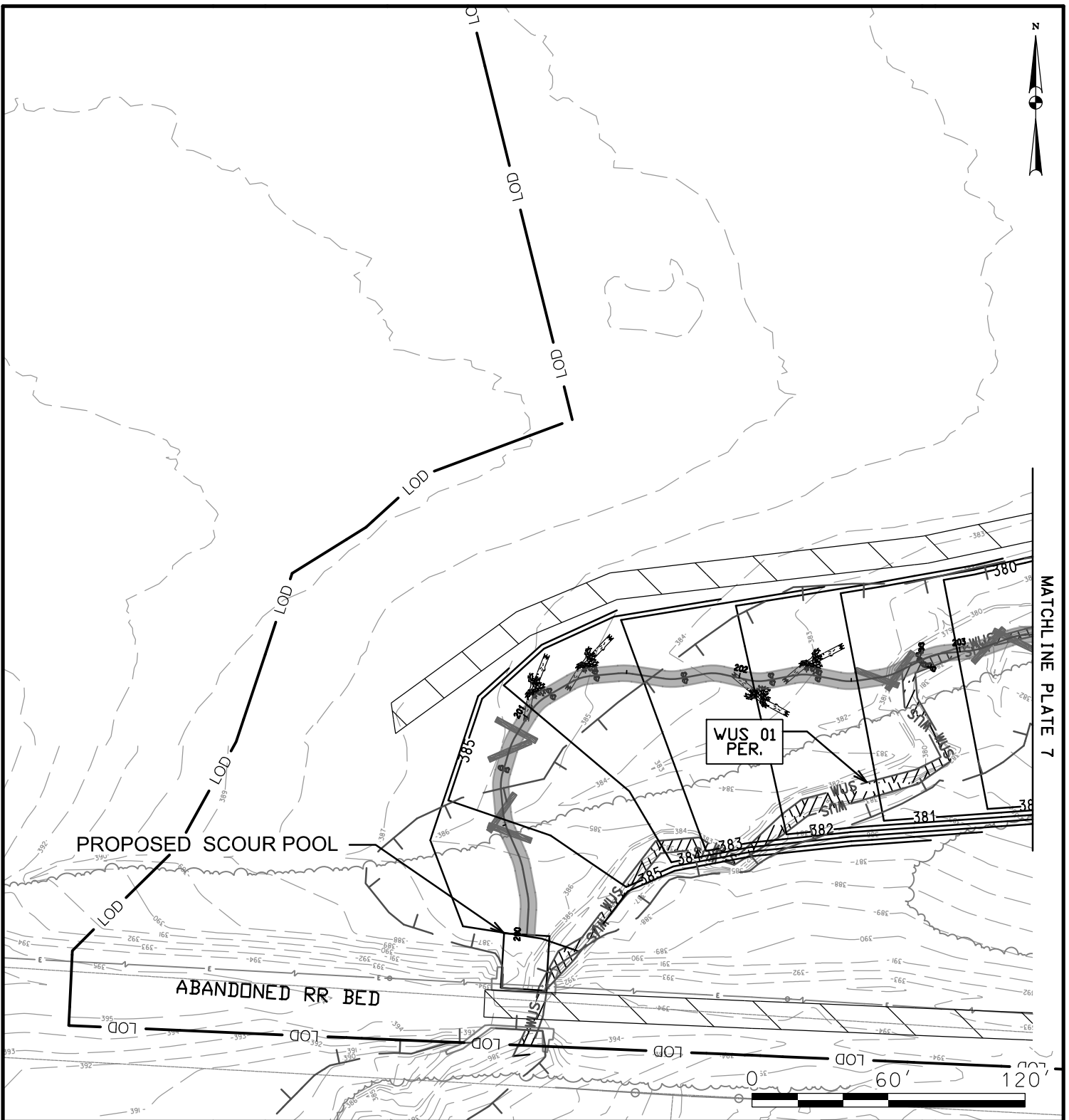
**MARYLAND
TRANSPORTATION AUTHORITY**

SCALE: 1" = 60'

CONTRACT NO.: KH-30XX

DATE: JULY 2019

PLATE 7 OF 14



IMPACTS ON THIS PLATE

	TEMPORARY		PERMANENT	
	0	SF	0	SF
PFO WETLAND	0	SF	0	SF
PSS WETLAND	0	SF	0	SF
PEM WETLAND	0	SF	0	SF
PERENNIAL WUS	0	LF/SF	343/1,727	LF/SF
INTERMITTENT WUS	0	LF/SF	0	LF/SF
EPHEMERAL WUS	0	LF/SF	0	LF/SF
WETLAND BUFFER	0	SF	0	SF
100-YEAR FLOODPLAIN	25,048	SF	0	SF

*100-YEAR FLOODPLAIN IMPACTS ARE NOT HATCHED

WETLAND IMPACT PLATE

I-95 ETL NORTHBOUND EXTENSION
 PHASE II
 ECCLESTON MITIGATION SITE
 BALTIMORE COUNTY, MARYLAND



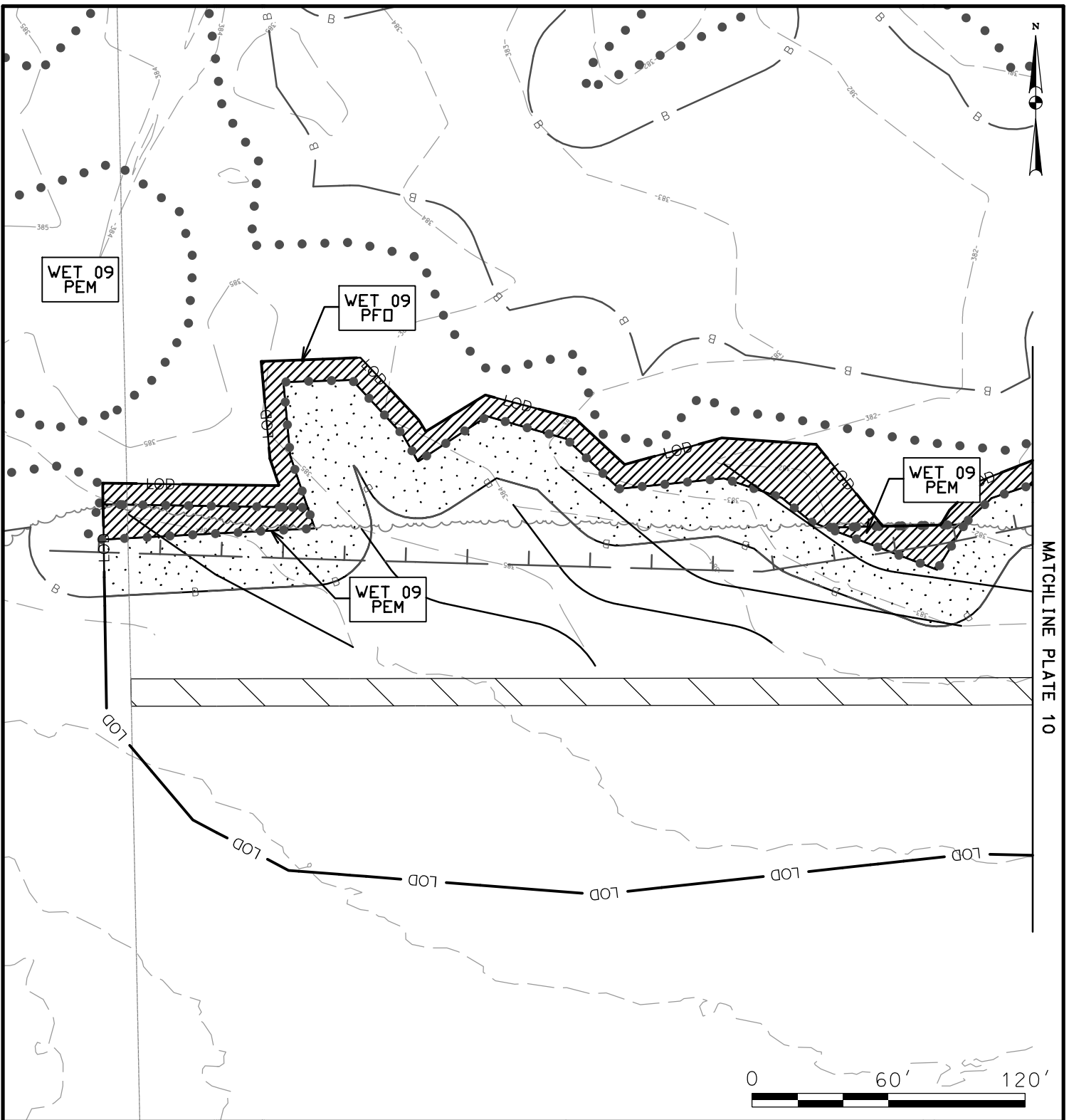
**MARYLAND
 TRANSPORTATION AUTHORITY**

SCALE: 1" = 60'

CONTRACT NO.: KH-30XX

DATE: JULY 2019

PLATE 8 OF 14



IMPACTS ON THIS PLATE

	TEMPORARY		PERMANENT	
PFO WETLAND	5,553	SF	0	SF
PSS WETLAND	0	SF	0	SF
PEM WETLAND	1,720	SF	0	SF
PERENNIAL WUS	0	LF/SF	0	LF/SF
INTERMITTENT WUS	0	LF/SF	0	LF/SF
EPHEMERAL WUS	0	LF/SF	0	LF/SF
WETLAND BUFFER	13,434	SF	0	SF
100-YEAR FLOODPLAIN	18,437	SF	0	SF

*100-YEAR FLOODPLAIN IMPACTS ARE NOT HATCHED

WETLAND IMPACT PLATE

I-95 ETL NORTHBOUND EXTENSION
 PHASE II
 ECCLESTON MITIGATION SITE
 BALTIMORE COUNTY, MARYLAND



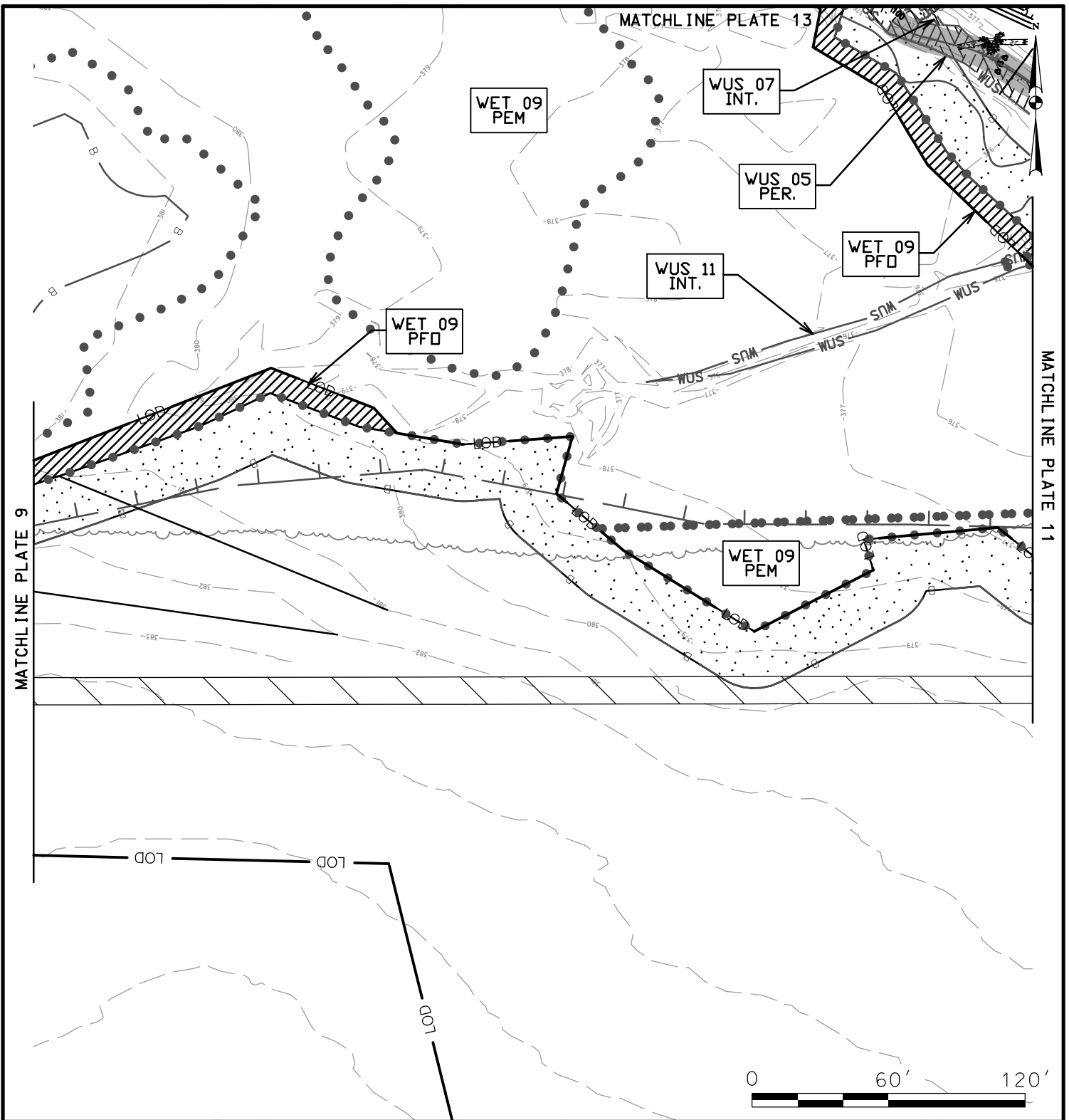
**MARYLAND
 TRANSPORTATION AUTHORITY**

SCALE: 1" = 60'

CONTRACT NO.: KH-30XX

DATE: JULY 2019

PLATE 9 OF 14



IMPACTS ON THIS PLATE

	TEMPORARY		PERMANENT	
PFO WETLAND	3,163	SF	0	SF
PSS WETLAND	0	SF	0	SF
PEM WETLAND	0	SF	0	SF
PERENNIAL WUS	0	LF/SF	78/884	LF/SF
INTERMITTENT WUS	0	LF/SF	10/21	LF/SF
EPHEMERAL WUS	0	LF/SF	0	LF/SF
WETLAND BUFFER	15,407	SF	0	SF
100-YEAR FLOODPLAIN	12,549	SF	0	SF

*100-YEAR FLOODPLAIN IMPACTS ARE NOT HATCHED

WETLAND IMPACT PLATE

I-95 ETL NORTHBOUND EXTENSION
 PHASE II
 ECCLESTON MITIGATION SITE
 BALTIMORE COUNTY, MARYLAND



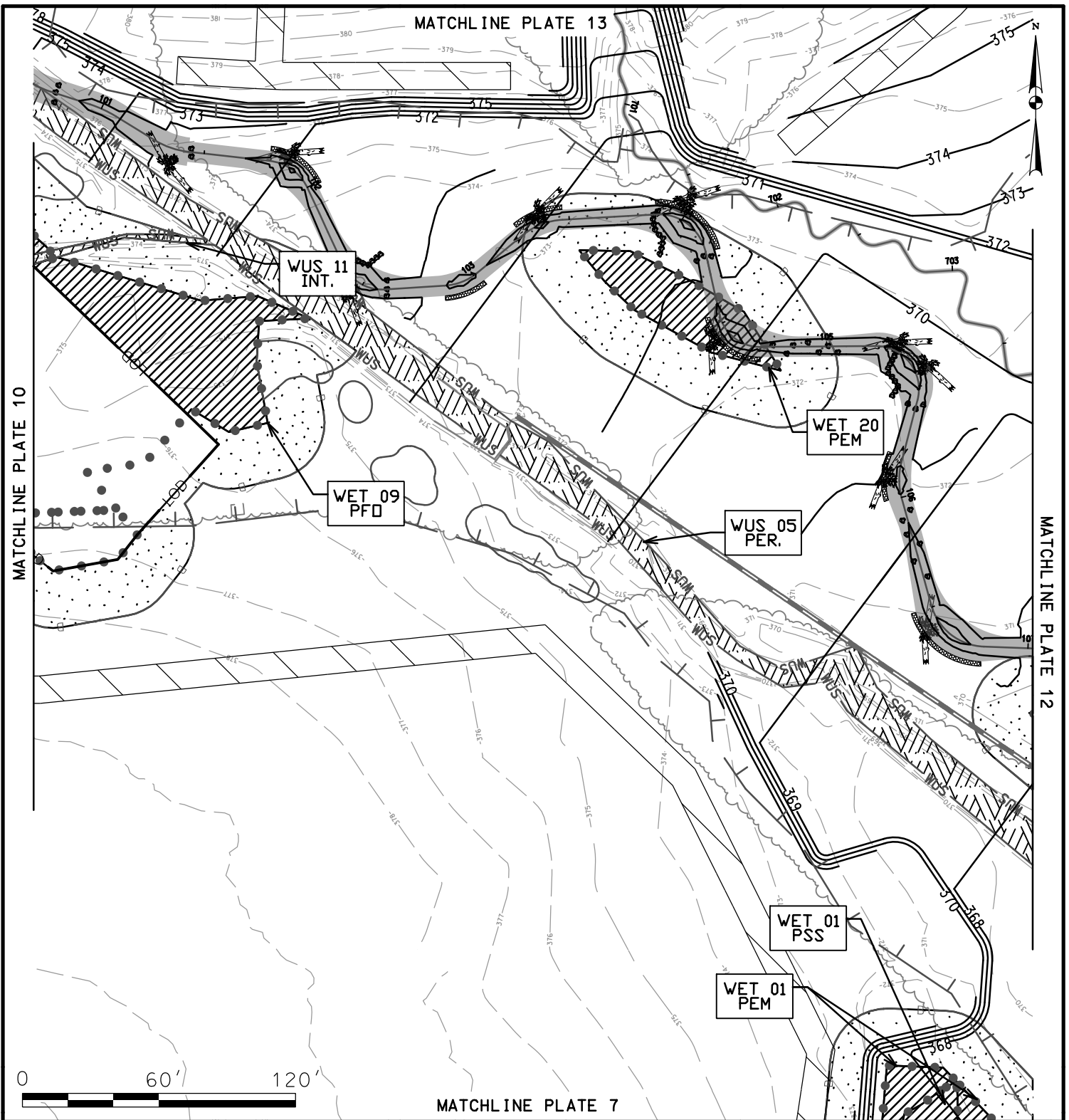
**MARYLAND
 TRANSPORTATION AUTHORITY**

SCALE: 1" = 60'

CONTRACT NO.: KH-30XX

DATE: JULY 2019

PLATE 10 OF 14



IMPACTS ON THIS PLATE

	TEMPORARY		PERMANENT	
PFO WETLAND	3,863	SF	0	SF
PSS WETLAND	247	SF	0	SF
PEM WETLAND	2,289	SF	0	SF
PERENNIAL WUS	0	LF/SF	561/7,321	LF/SF
INTERMITTENT WUS	0	LF/SF	89/248	LF/SF
EPHEMERAL WUS	0	LF/SF	0	LF/SF
WETLAND BUFFER	18,798	SF	0	SF
100-YEAR FLOODPLAIN	92,860	SF	0	SF

*100-YEAR FLOODPLAIN IMPACTS ARE NOT HATCHED

WETLAND IMPACT PLATE

I-95 ETL NORTHBOUND EXTENSION
 PHASE II
 ECCLESTON MITIGATION SITE
 BALTIMORE COUNTY, MARYLAND



**MARYLAND
 TRANSPORTATION AUTHORITY**

SCALE: 1" = 60'

CONTRACT NO.: KH-30XX

DATE: JULY 2019

PLATE 11 OF 14

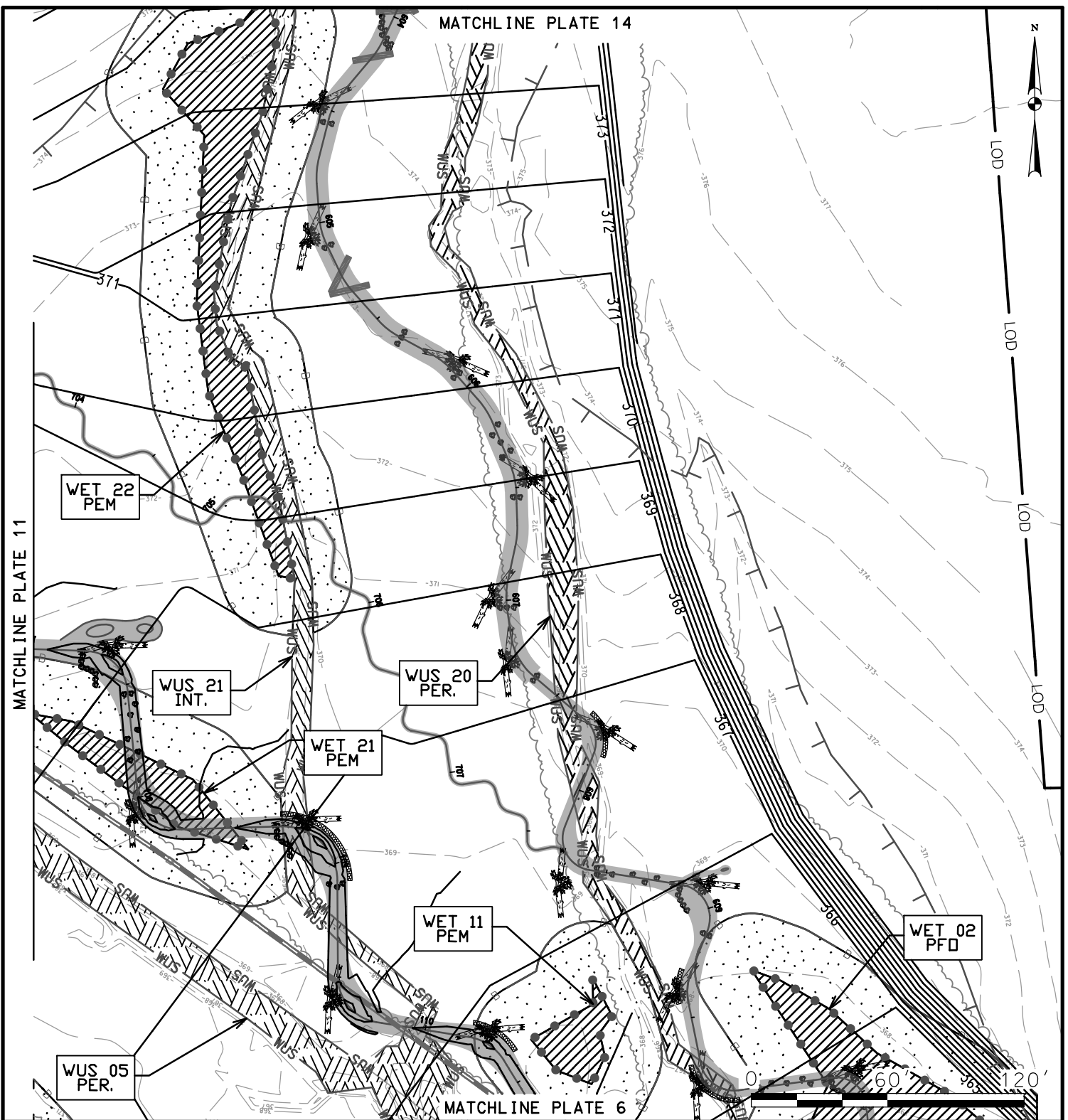
MATCHLINE PLATE 14



LOD
LOD
LOD
LOD

MATCHLINE PLATE 11

MATCHLINE PLATE 6



IMPACTS ON THIS PLATE

	TEMPORARY		PERMANENT	
PFO WETLAND	2,284	SF	0	SF
PSS WETLAND	0	SF	0	SF
PEM WETLAND	6,439	SF	0	SF
PERENNIAL WUS	0	LF/SF	743/7,248	LF/SF
INTERMITTENT WUS	0	LF/SF	518/4,920	LF/SF
EPHEMERAL WUS	0	LF/SF	0	LF/SF
WETLAND BUFFER	29,246	SF	0	SF
100-YEAR FLOODPLAIN	137,767	SF	0	SF

*100-YEAR FLOODPLAIN IMPACTS ARE NOT HATCHED

WETLAND IMPACT PLATE

I-95 ETL NORTHBOUND EXTENSION
PHASE II
ECCLESTON MITIGATION SITE
BALTIMORE COUNTY, MARYLAND



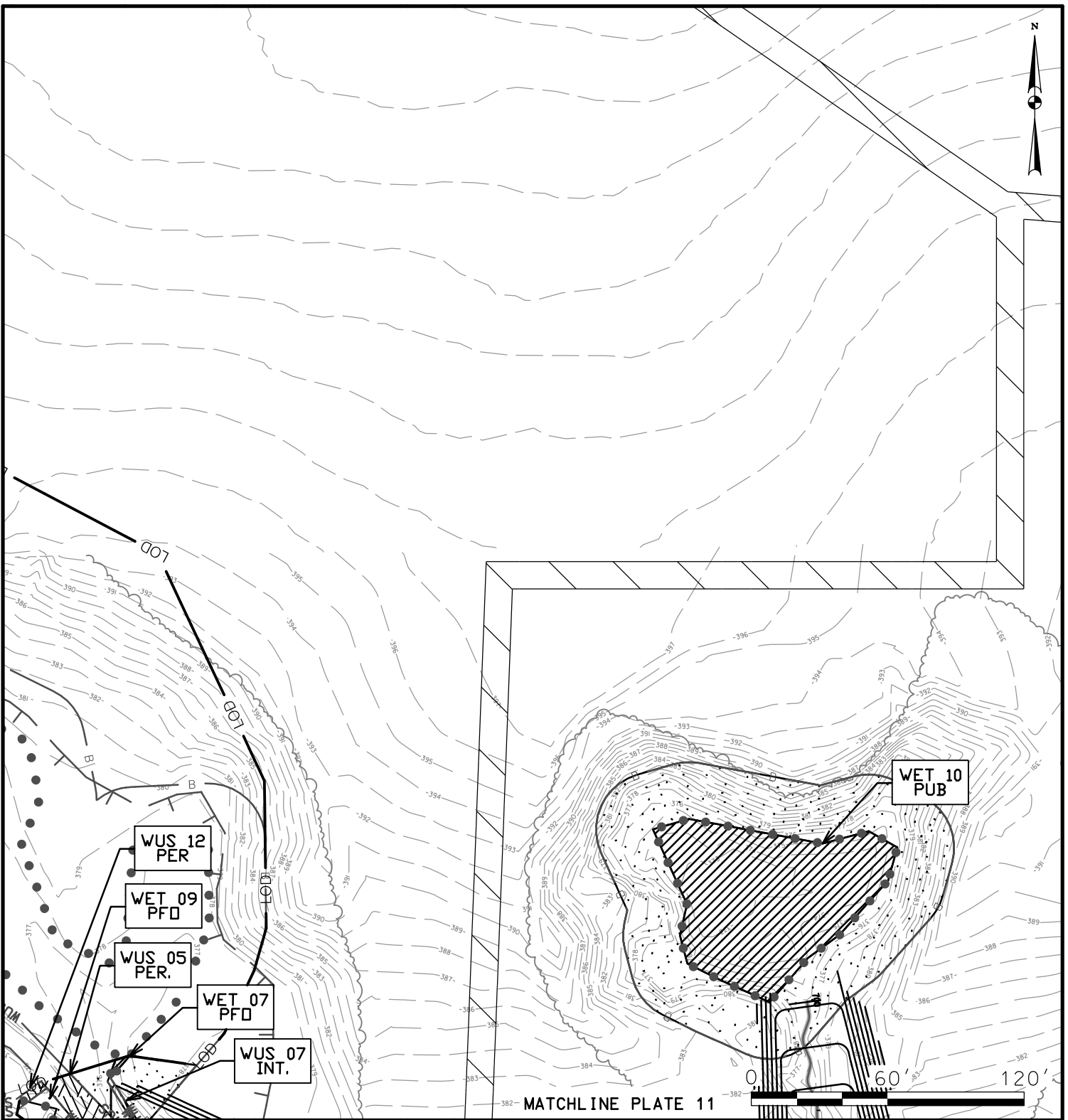
**MARYLAND
TRANSPORTATION AUTHORITY**

SCALE: 1" = 60'

CONTRACT NO.: KH-30XX

DATE: JULY 2019

PLATE 12 OF 14



MATCHLINE PLATE 11

IMPACTS ON THIS PLATE

	TEMPORARY		PERMANENT	
PFO WETLAND	129	SF	0	SF
PUB WETLAND	5,235	SF	0	SF
PEM WETLAND	0	SF	0	SF
PERENNIAL WUS	0	LF/SF	36/358	LF/SF
INTERMITTENT WUS	0	LF/SF	19/38	LF/SF
EPHEMERAL WUS	0	LF/SF	0	LF/SF
WETLAND BUFFER	10,487	SF	0	SF
100-YEAR FLOODPLAIN	1,385	SF	0	SF

*100-YEAR FLOODPLAIN IMPACTS ARE NOT HATCHED

WETLAND IMPACT PLATE

I-95 ETL NORTHBOUND EXTENSION
 PHASE II
 ECCLESTON MITIGATION SITE
 BALTIMORE COUNTY, MARYLAND



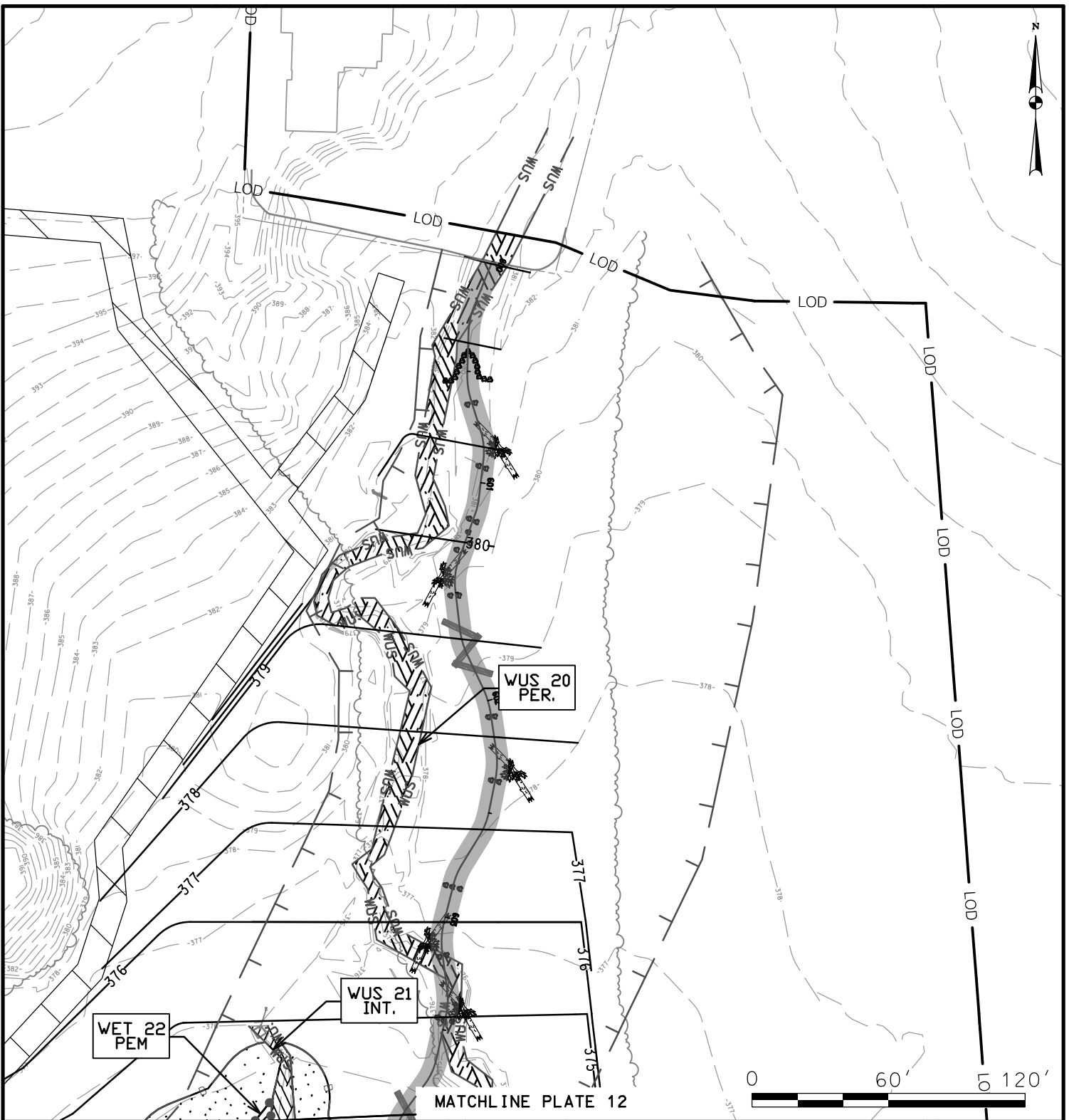
**MARYLAND
 TRANSPORTATION AUTHORITY**

SCALE: 1" = 60'

CONTRACT NO.: KH-30XX

DATE: JULY 2019

PLATE 13 OF 14



MATCHLINE PLATE 12

IMPACTS ON THIS PLATE

	TEMPORARY		PERMANENT	
		SF		SF
PFO WETLAND	0	SF	0	SF
PSS WETLAND	0	SF	0	SF
PEM WETLAND	35	SF	0	SF
PERENNIAL WUS	0	LF/SF	491/3,967	LF/SF
INTERMITTENT WUS	0	LF/SF	45/311	LF/SF
EPHEMERAL WUS	0	LF/SF	0	LF/SF
WETLAND BUFFER	1,505	SF	0	SF
100-YEAR FLOODPLAIN	67,978	SF	0	SF

*100-YEAR FLOODPLAIN IMPACTS ARE NOT HATCHED

WETLAND IMPACT PLATE

I-95 ETL NORTHBOUND EXTENSION
 PHASE II
 ECCLESTON MITIGATION SITE
 BALTIMORE COUNTY, MARYLAND



**MARYLAND
 TRANSPORTATION AUTHORITY**

SCALE: 1" = 60'

CONTRACT NO.: KH-30XX

DATE: JULY 2019

PLATE 14 OF 14