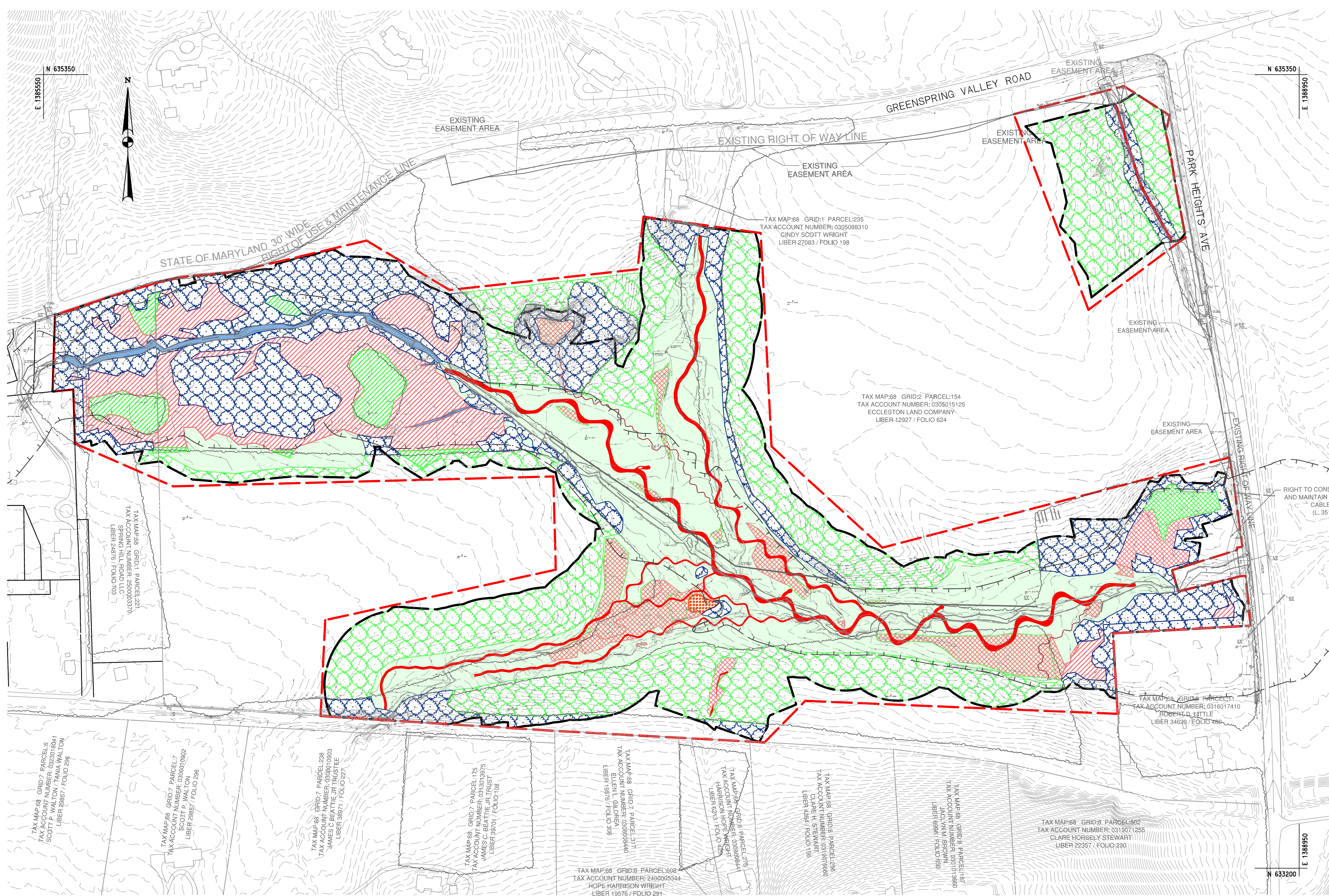




APPENDIX E ECCLESTON DESIGN

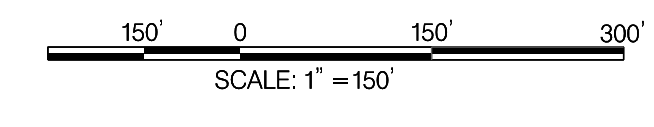


LEGEND

- PROPOSED EASEMENT
- STREAM /WETLAND BUFFER
- FORESTED BUFFER PRESERVATION 12.03 ac.
- BUFFER ENHANCEMENT 15.22 ac.
- WETLAND REMOVAL AREA* 0.22 ac.
- PERENNIAL STREAM RESTORATION 7,486.47 LF
- STREAM CREATION 1,117.53 LF
- PERENNIAL STREAM PRESERVATION 1,456.65 LF
- PFO RESTORATION 13.05 ac.
- PFO ENHANCEMENT 3.00 ac.
- PFO PRESERVATION 4.50 ac.
- PEM ENHANCEMENT 0.32 ac.
- PEM PRESERVATION 1.21 ac.

*INCLUDES AREAS OF WETLAND REMOVAL DUE TO NEW STREAM LOCATIONS (NOT HATCHED).

OWNER / DEVELOPER INFORMATION
JOHNSON MIRMIRAN AND THOMPSON 40 WIGHT AVE. COCKEYSVILLE, MD 21030
CONTACT
JEREMY KOSER 40 WIGHT AVE HUNT VALLEY, MD 21030 TEL: 410-329-3100



MARYLAND COORDINATE SYSTEM - HOR. NAD 83/91 MD STATE PLANE VERT. NAVD 88

GREENSPRING VALLEY ROAD
SW CORNER PARK HEIGHTS AVE
OWINGS MILLS, MD 21117
BALTIMORE COUNTY ELECTION DISTRICT: 3 COUNCILMANIC DISTRICT 2

MITIGATION CREDIT MAP

SCALE AS SHOWN	DATE JULY 2019	PROJECT NO. 17-10977-001
DESIGNED BY JM	COUNTY BALTIMORE COUNTY	
DRAWN BY KNH	LOGMILE	
CHECKED BY JJ CD G	HORIZONTAL SCALE N/A	
F.A.P. NO. SEE TITLE SHEET	VERTICAL SCALE N/A	
DRAWING NO.	OF	SHEET NO. xx OF xx

REVISIONS

CONCEPT SUBMISSION

NOT FOR CONSTRUCTION

ECCLESTON MITIGATION SITE

DESIGN PROFESSIONAL
JEREMY KOSER
JOHNSON MIRMIRAN & THOMPSON INC.
40 WIGHT AVENUE, HUNT VALLEY, MD 21030
TEL: 410-329-3100
EMAIL: JKoser@jmt.com

PROFESSIONAL CERTIFICATION
I HEREBY CERTIFY THAT THESE DOCUMENTS WERE PREPARED OR APPROVED BY ME AND THAT I AM A DULY LICENSED PROFESSIONAL ENGINEER UNDER THE LAWS OF THE STATE OF MARYLAND, LICENSE NO. 31183, EXPIRATION DATE: 1/13/2021.



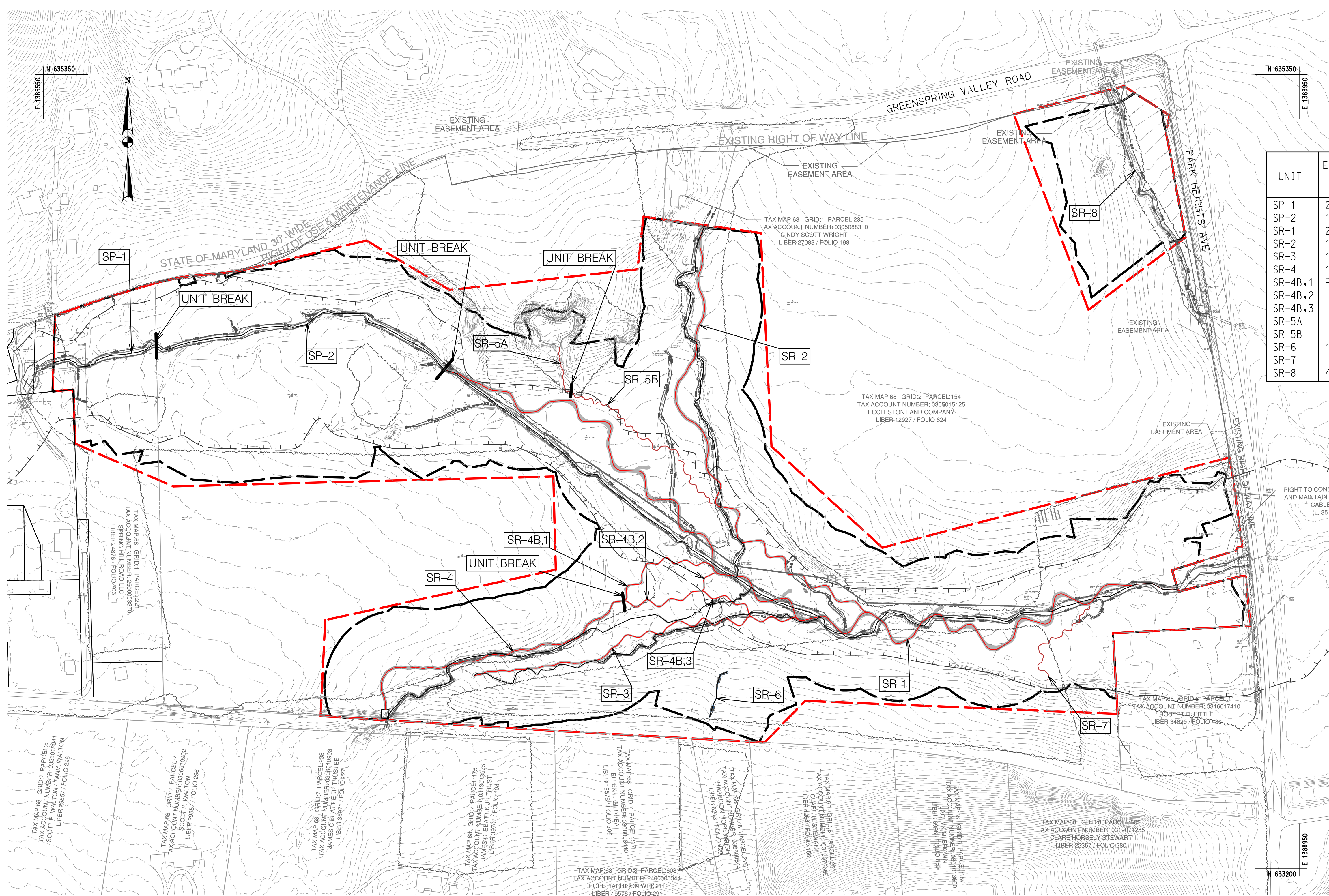
BY: PCrawford

C:\2017\170977_001 Eccleston_Mitigation\CAD\CredMap\CSRF-Credit_Map_0001_Eccleston.dgn Friday, October 11, 2019 AT 10:54 AM

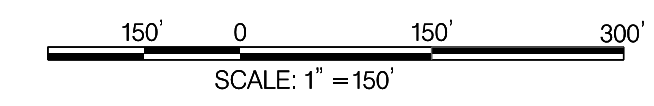
LEGEND

- PROPOSED EASEMENT
- STREAM /WETLAND BUFFER

UNIT	EXISTING LINEAR FEET	PROPOSED LINEAR FEET	PROPOSED MITIGATION ACTIVITY	STREAM TYPE	RATIO	PROPOSED CREDIT
SP-1	299.65	299.65	PRESERVATION	PERENNIAL	10:1	29.97
SP-2	1157.00	1157.00	PRESERVATION	PERENNIAL	10:1	115.70
SR-1	2324.25	2796.24	RESTORATION	PERENNIAL	1:1	2796.24
SR-2	1111.36	1459.47	RESTORATION	PERENNIAL	1:1	1459.47
SR-3	1076.02	989.61	RESTORATION	PERENNIAL	1:1	989.61
SR-4	1171.81	815.87	RESTORATION	PERENNIAL	1:1	815.87
SR-4B,1	-	348.27	RESTORATION	PERENNIAL	1:1	348.27
SR-4B,2	-	327.10	RESTORATION	PERENNIAL	-	-
SR-4B,3	-	178.35	RESTORATION	PERENNIAL	-	-
SR-5A	-	140.30	CREATION	INTERMITTENT	1.25:1	112.24
SR-5B	-	635.00	CREATION	PERENNIAL	1:1	635.00
SR-6	141.36	141.36	RESTORATION	PERENNIAL	1:1	141.36
SR-7	-	342.23	CREATION	PERENNIAL	1:1	342.23
SR-8	430.20	430.20	RESTORATION	PERENNIAL	1:1	430.20



RIGHT TO CONSTRUCT, OPERATE AND MAINTAIN YORK-BALTIMORE CABLE SYSTEM (L. 3511/F. 509)



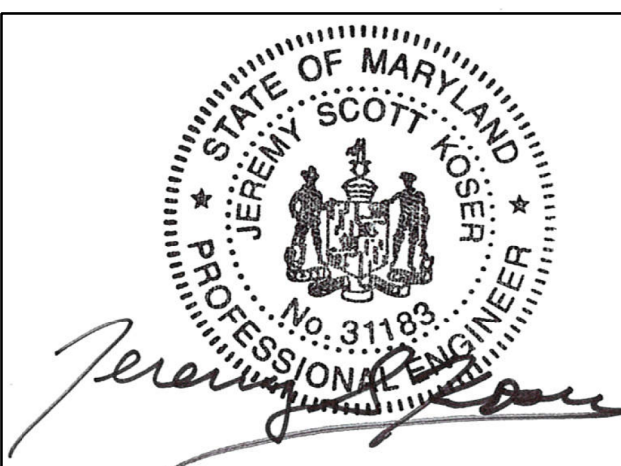
OWNER / DEVELOPER INFORMATION
JOHNSON MIRMIRAN AND THOMPSON 40 WIGHT AVE. COCKEYSVILLE, MD 21030
CONTACT
JEREMY KOSER 40 WIGHT AVE. HUNT VALLEY, MD 21030 TEL: 410-329-3100

MARYLAND COORDINATE SYSTEM - HOR. NAD 83/91 MD STATE PLANE VERT. NAVD 88

GREENSPRING VALLEY ROAD
SW CORNER PARK HEIGHTS AVE
OWINGS MILLS, MD 21117
BALTIMORE COUNTY ELECTION DISTRICT: 3 COUNCILMANIC DISTRICT 2

MITIGATION CREDIT MAP

SCALE AS SHOWN	DATE OCTOBER 2019	PROJECT NO. 17-10977-001
DESIGNED BY JM	COUNTY BALTIMORE COUNTY	
DRAWN BY KNH	LOGMILE	
CHECKED BY JJ CD G	HORIZONTAL SCALE N/A	
F.A.P. NO. SEE TITLE SHEET	VERTICAL SCALE N/A	
DRAWING NO.	OF	SHEET NO. xx OF xx



DESIGN PROFESSIONAL
 JEREMY KOSER
 JOHNSON MIRMIRAN & THOMPSON INC.
 40 WIGHT AVENUE, HUNT VALLEY, MD 21030
 TEL: 410-329-3100
 EMAIL: JKoser@jmt.com

PROFESSIONAL CERTIFICATION
 I HEREBY CERTIFY THAT THESE DOCUMENTS WERE PREPARED OR APPROVED BY ME AND THAT I AM A DULY LICENSED PROFESSIONAL ENGINEER UNDER THE LAWS OF THE STATE OF MARYLAND, LICENSE NO. 31183, EXPIRATION DATE: 1/13/2021.

ECCLESTON MITIGATION SITE

REVISIONS

CONCEPT SUBMISSION

NOT FOR CONSTRUCTION

BY: PCrawford

C:\2017\170977_001 Eccleston_Mitigation\CADD\CredMap\SSR-Credit Map_0001.Eccleston.dgn Friday, October 11, 2019 AT 11:03 AM