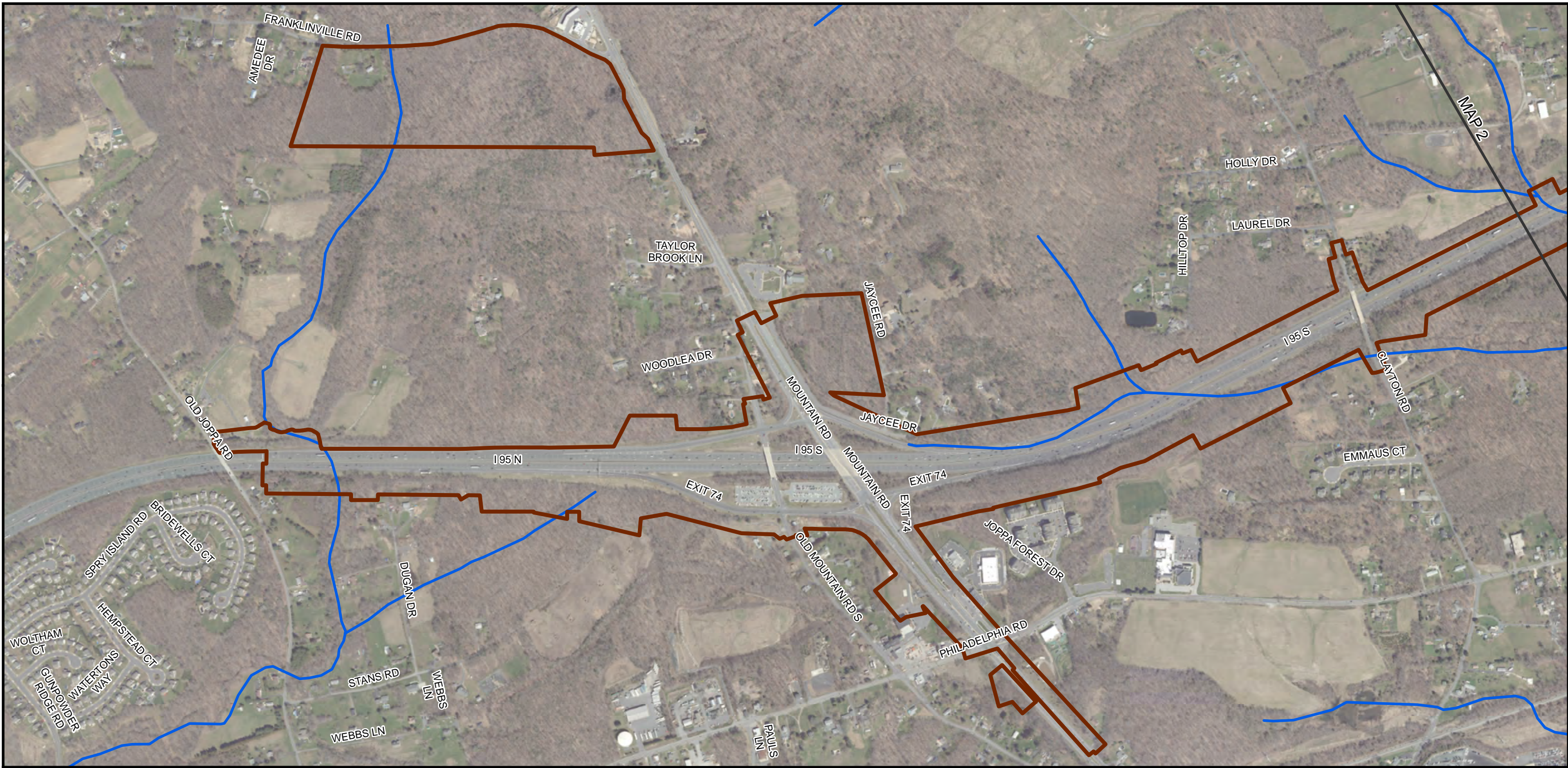
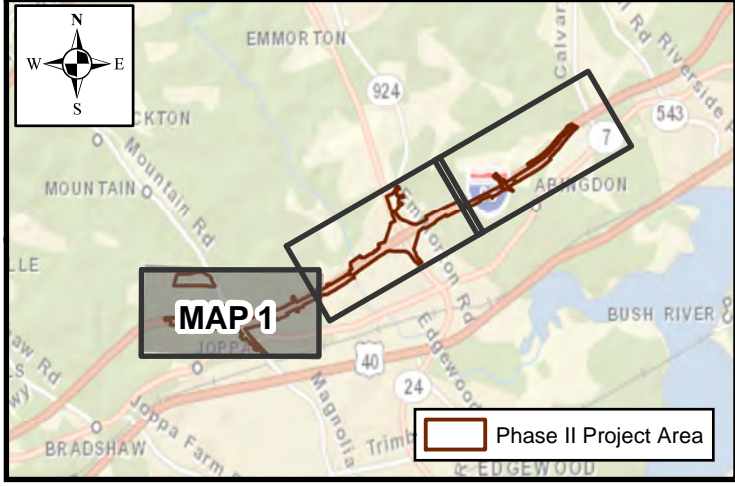




## APPENDIX A FIGURES AND SOIL MAPPING UNITS



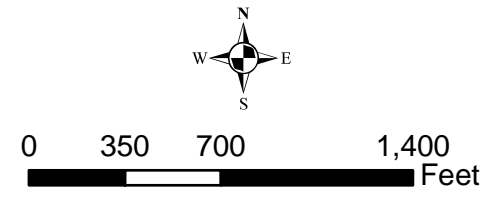
## I-95 ETL NORTHBOUND EXTENSION PHASE II FIGURE 1A - VICINITY MAP 1



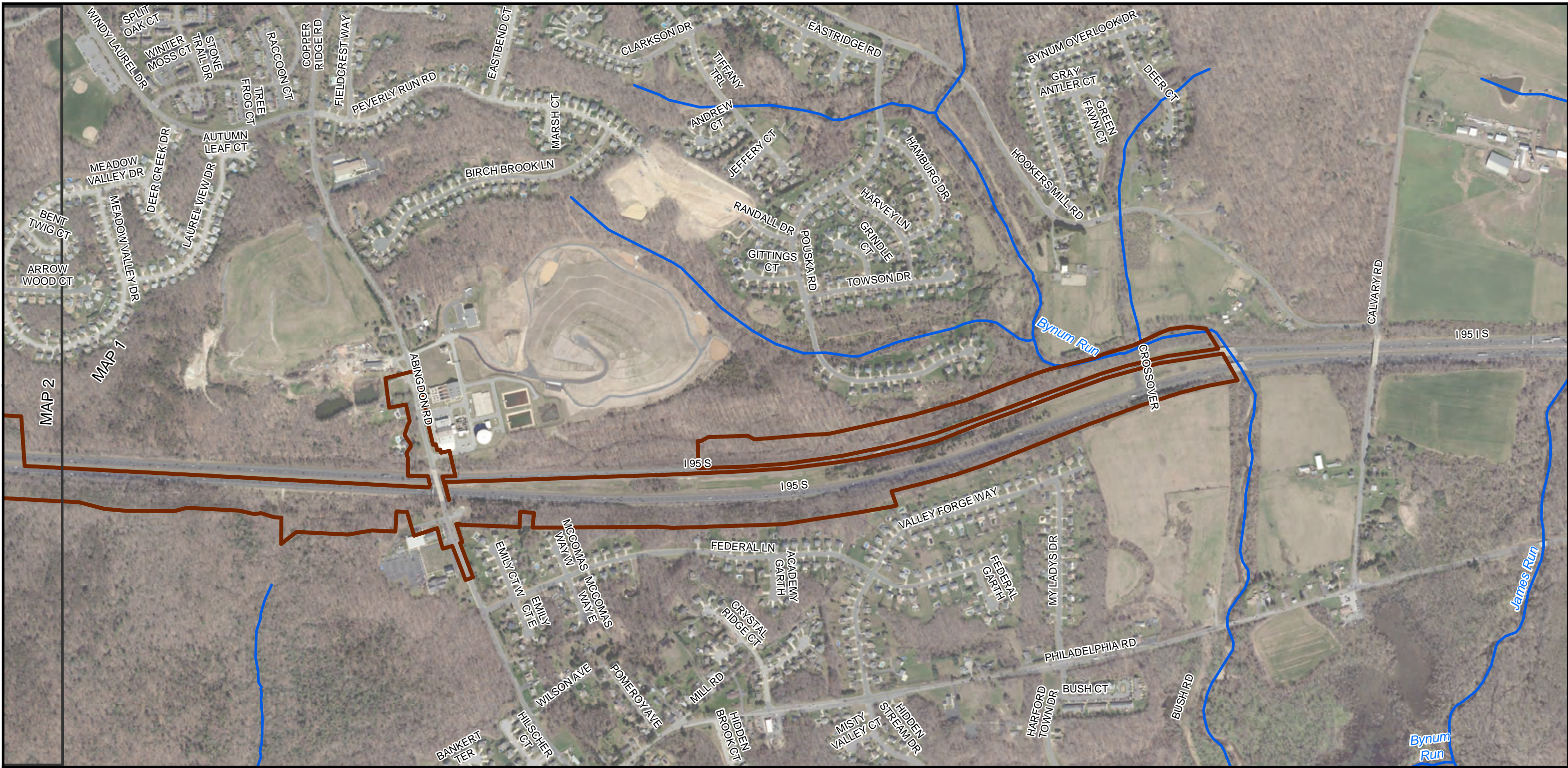
- Legend**
- Phase II Project Area
  - Matchline
  - MDE Streams



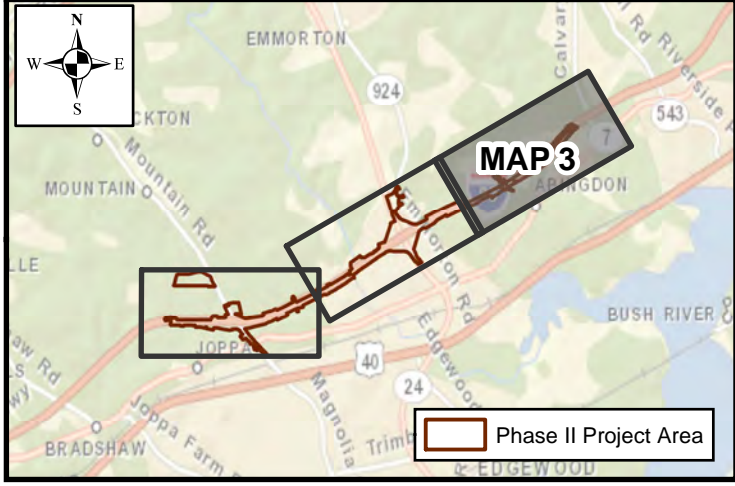
DATE: APRIL 2019







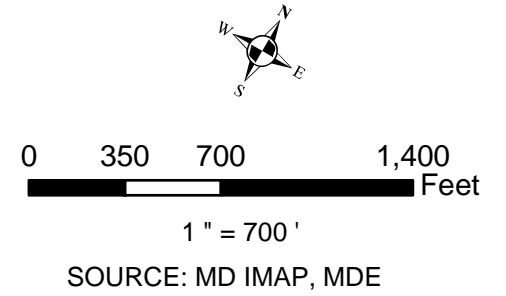
## I-95 ETL NORTHBOUND EXTENSION PHASE II FIGURE 1C - VICINITY MAP 3

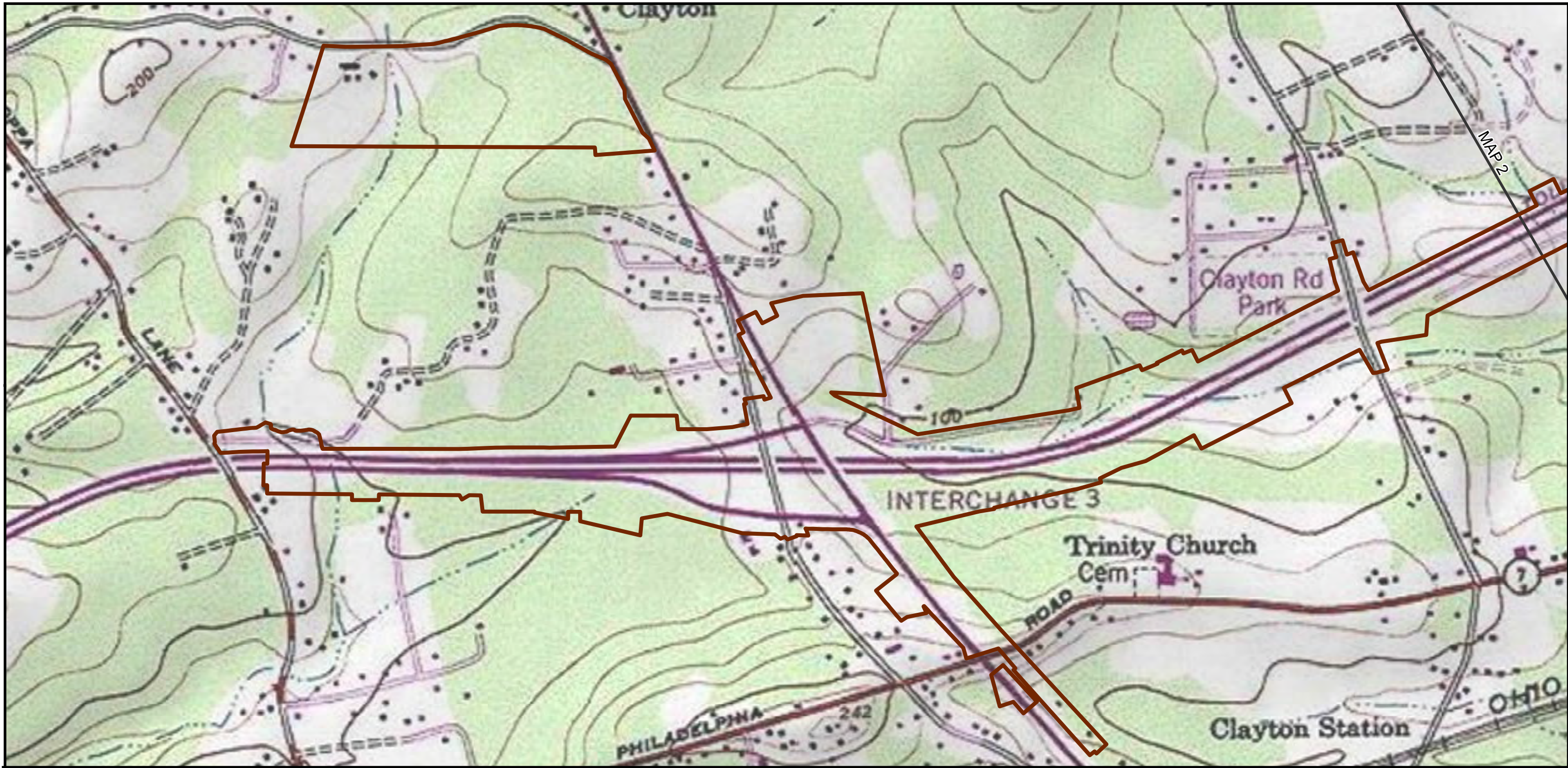


- Legend**
- Phase II Project Area
  - Matchline
  - MDE Streams

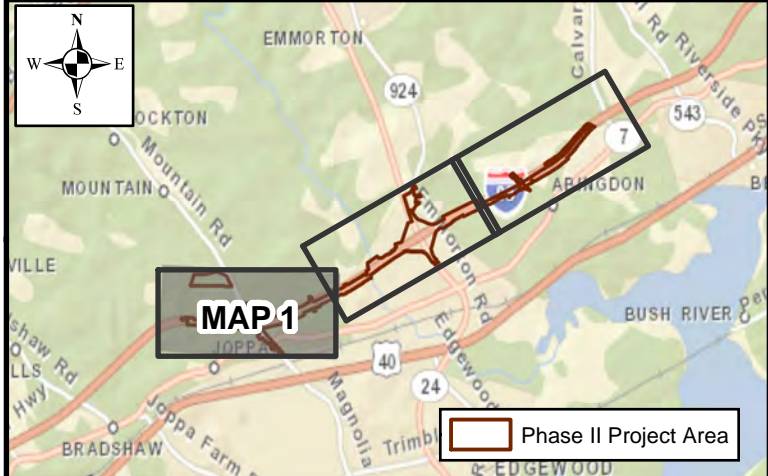


DATE: APRIL 2019





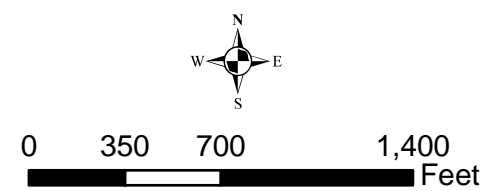
**I-95 ETL NORTHBOUND EXTENSION PHASE II  
FIGURE 2A - USGS TOPOGRAPHIC MAP 1**



- Legend**
- Phase II Project Area
  - Matchline



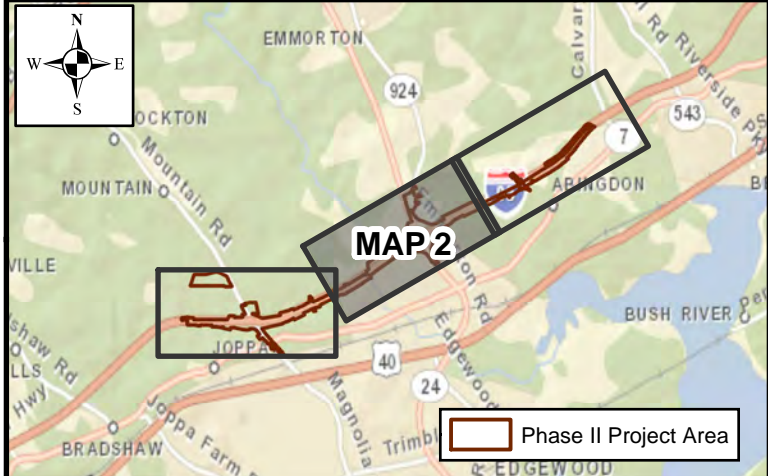
DATE: APRIL 2019





1" = 700'  
SOURCE: USGS



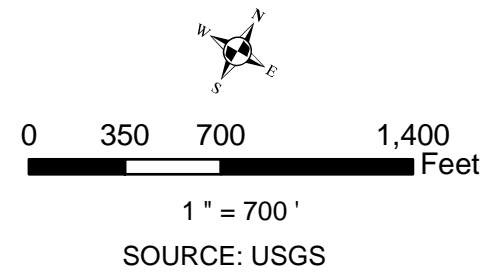
**I-95 ETL NORTHBOUND EXTENSION PHASE II  
FIGURE 2B - USGS TOPOGRAPHIC MAP 2**



- Legend**
-  Phase II Project Area
  -  Matchline

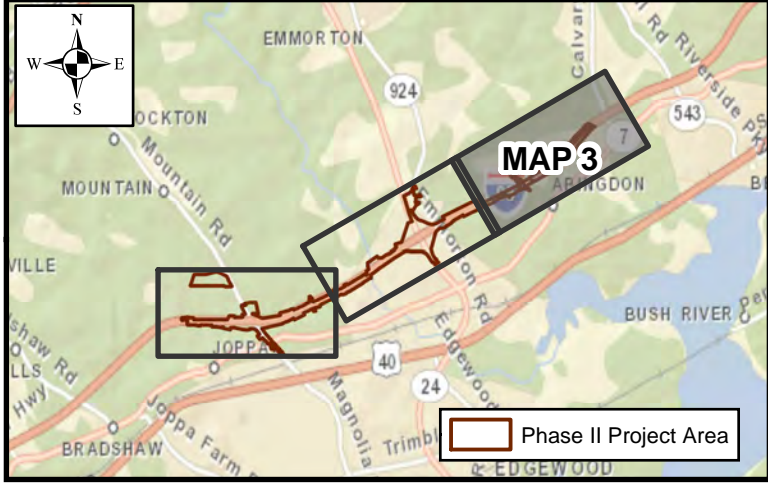




DATE: APRIL 2019





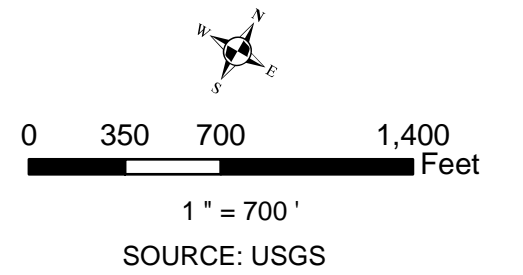
**I-95 ETL NORTHBOUND EXTENSION PHASE II  
FIGURE 2C - USGS TOPOGRAPHIC MAP 3**

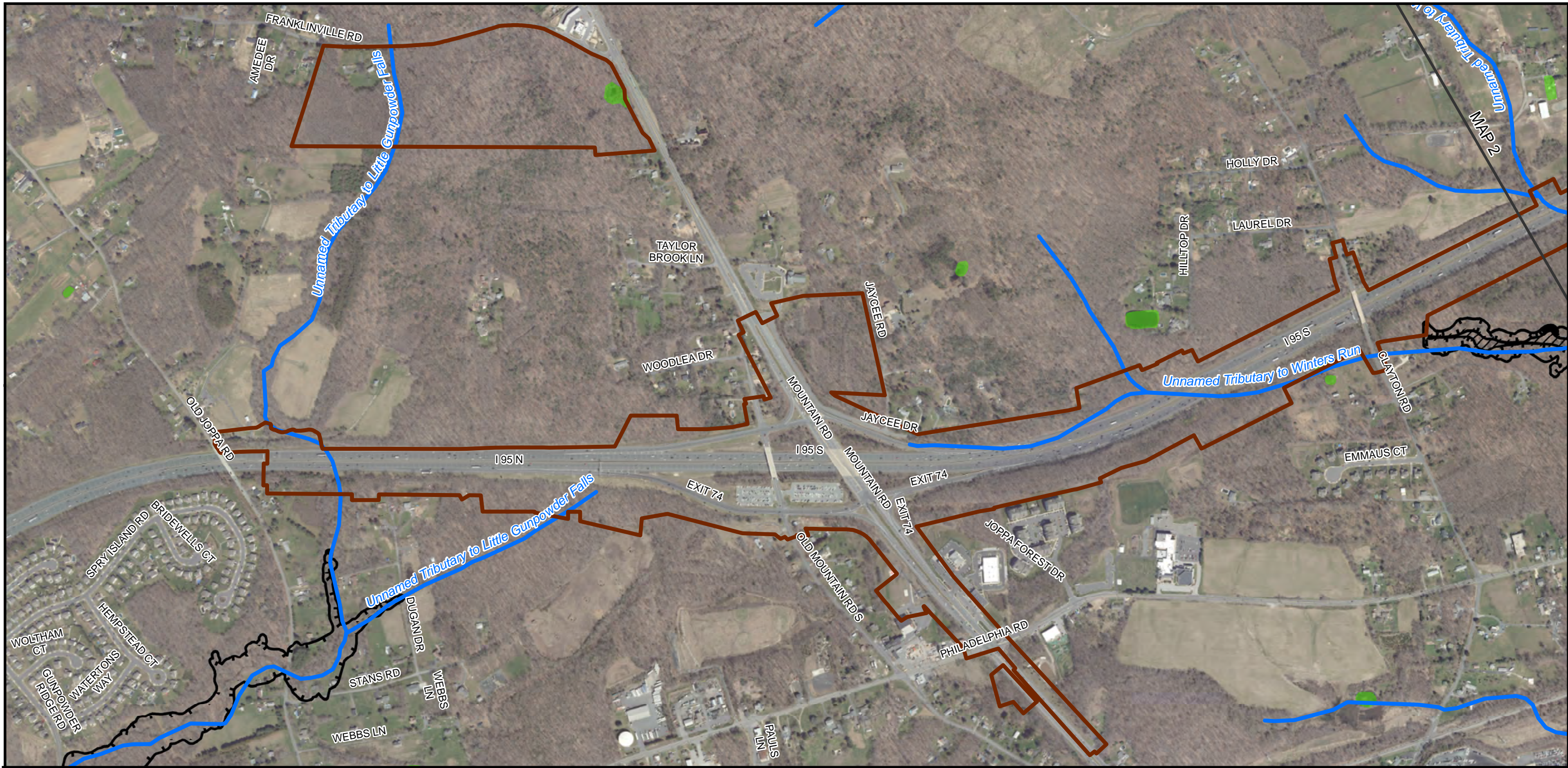


- Legend**
-  Phase II Project Area
  -  Matchline

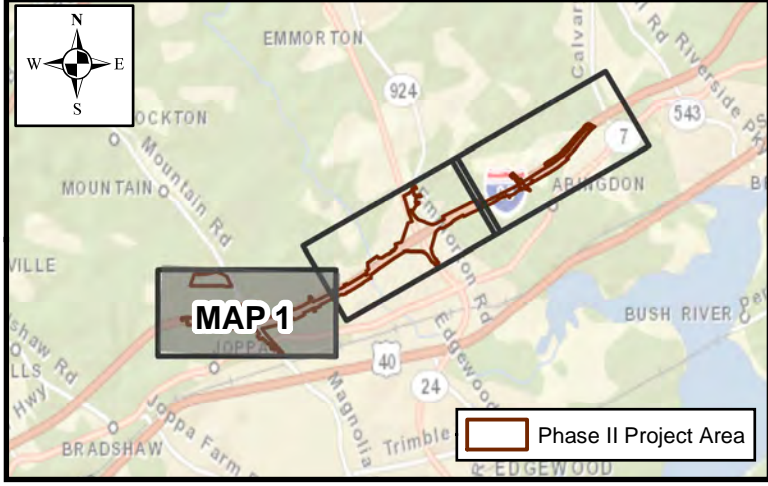


DATE: APRIL 2019





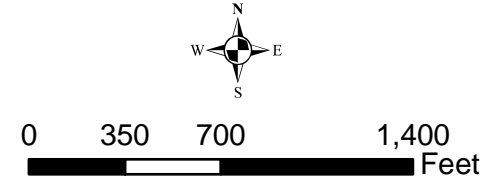
## I-95 ETL NORTHBOUND EXTENSION PHASE II FIGURE 3A - PUBLISHED WATER RESOURCES MAP 1



Legend	
	Phase II Project Area
	Matchline
	MDE Streams
	100-Year Floodplain
	Floodway
Wetlands - National Wetlands Inventory	
	Estuarine
	Lacustrine
	Marine
	Palustrine
	Riverine

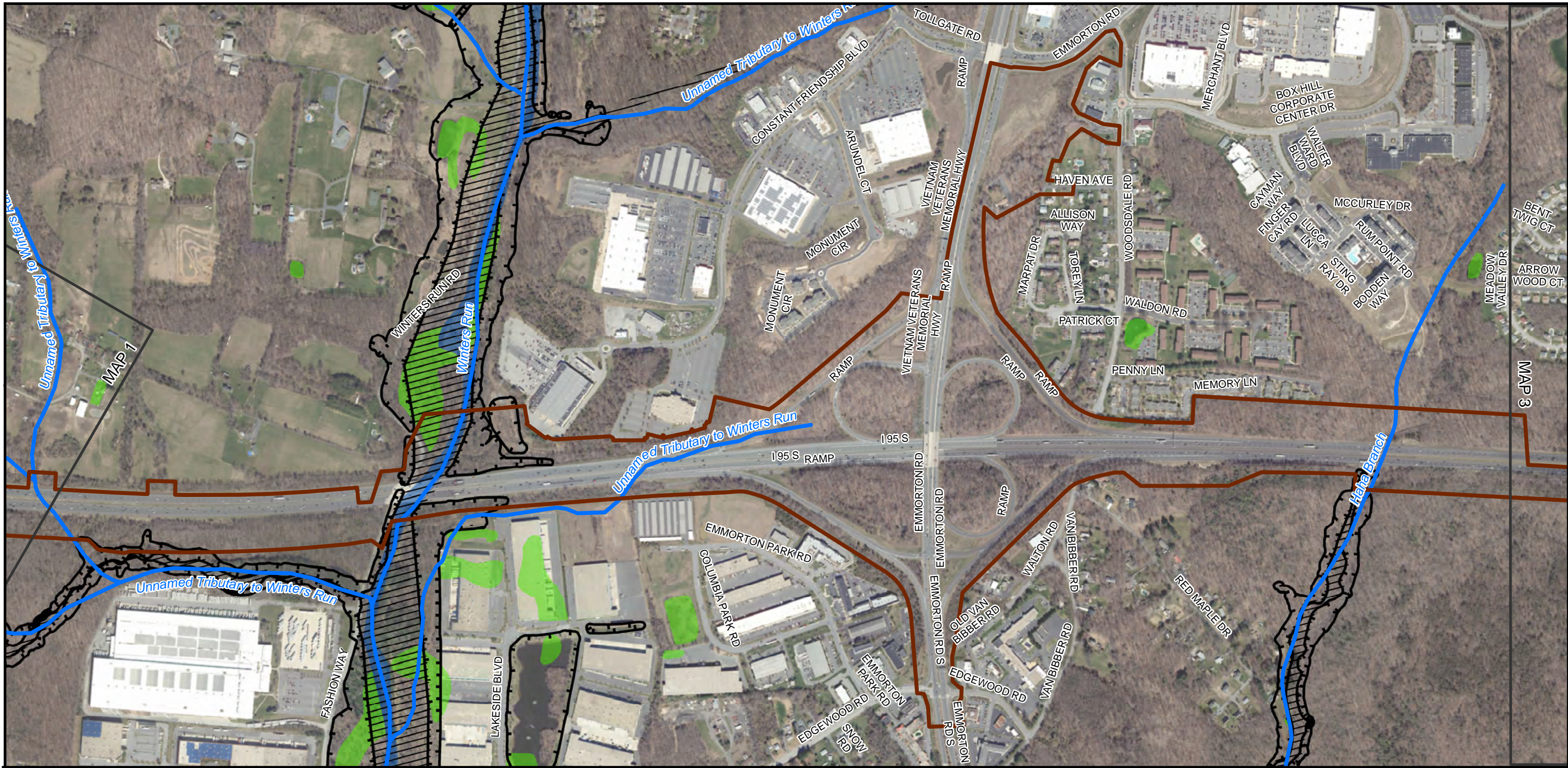


DATE: APRIL 2019

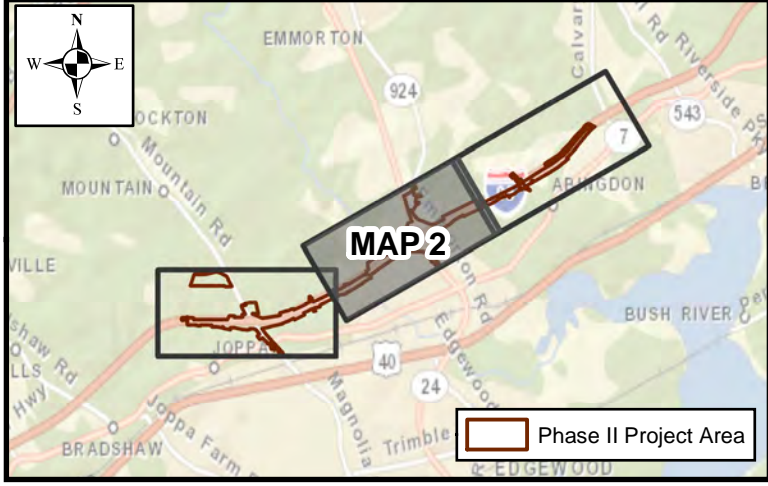


1" = 700'  
SOURCE: MD IMAP, FEMA, DNR, USFWS, NWI, MDE





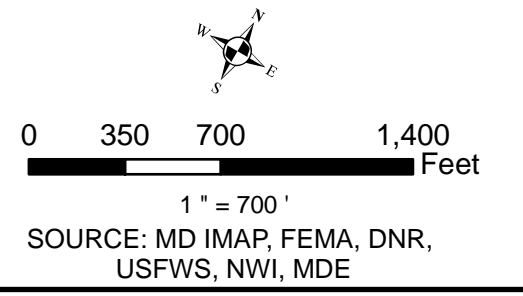
**I-95 ETL NORTHBOUND EXTENSION PHASE II  
FIGURE 3B - PUBLISHED WATER RESOURCES MAP 2**

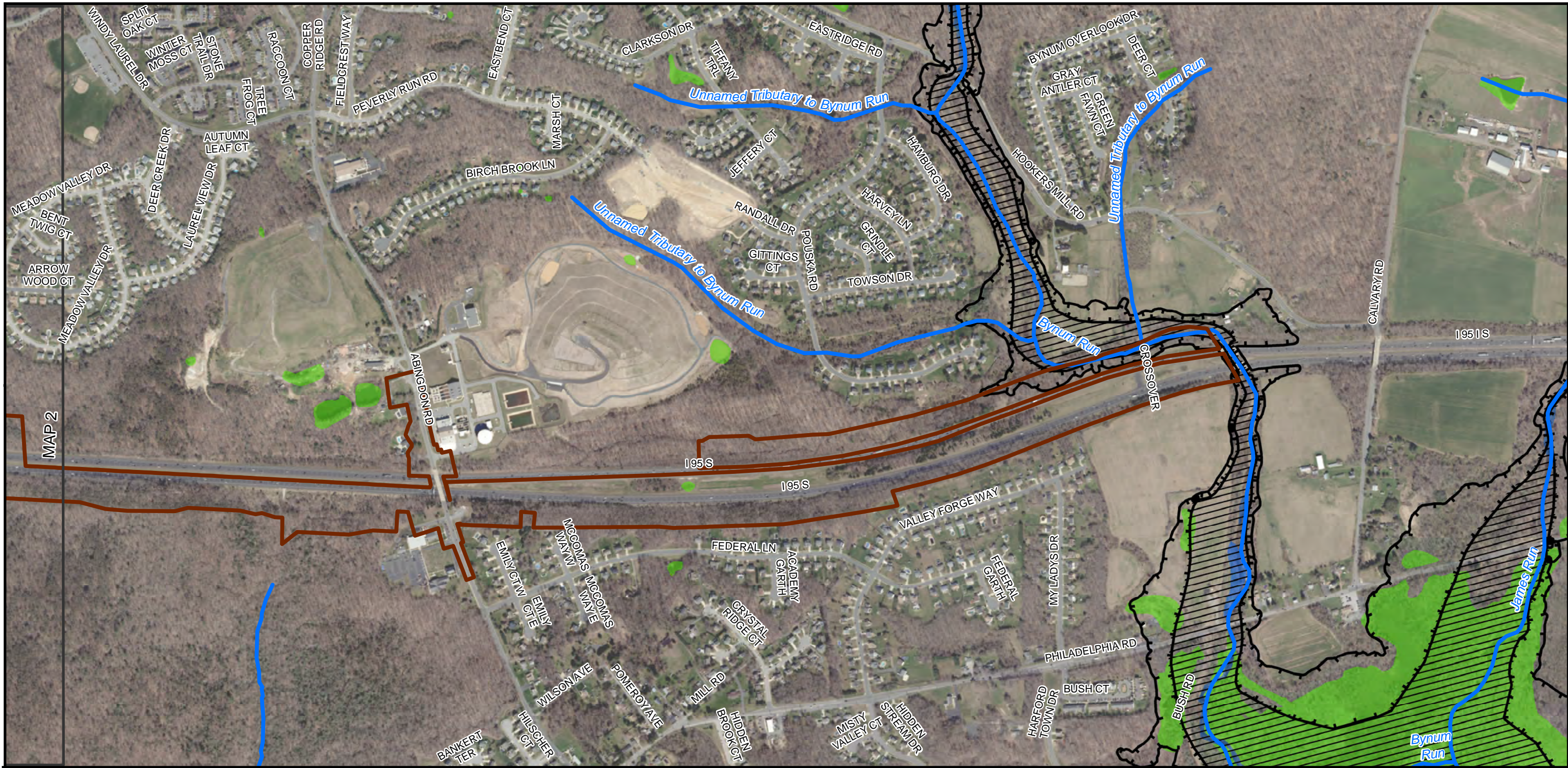


Legend	
Phase II Project Area	<b>Wetlands - National Wetlands Inventory</b>
Matchline	Estuarine
MDE Streams	Lacustrine
100-Year Floodplain	Marine
Floodway	Palustrine
	Riverine

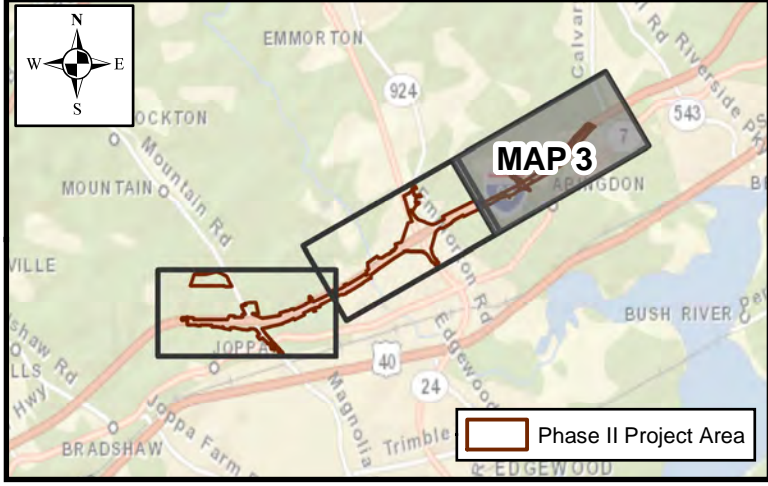


DATE: APRIL 2019





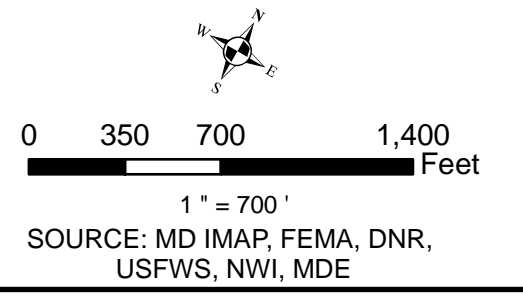
## I-95 ETL NORTHBOUND EXTENSION PHASE II FIGURE 3C - PUBLISHED WATER RESOURCES MAP 3

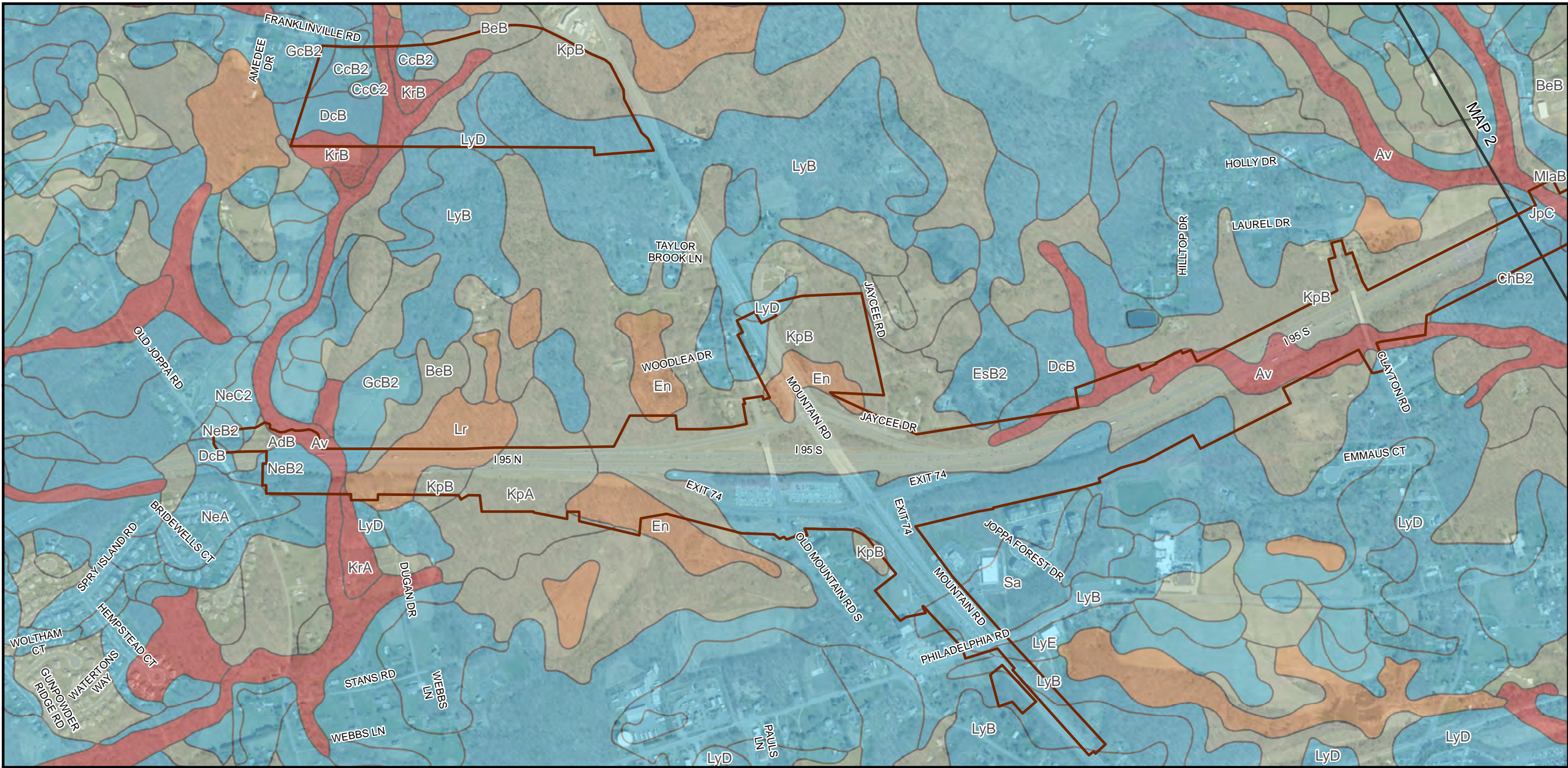


Legend	
Phase II Project Area	<b>Wetlands - National Wetlands Inventory</b>
Matchline	Estuarine
MDE Streams	Lacustrine
100-Year Floodplain	Marine
Floodway	Palustrine
	Riverine

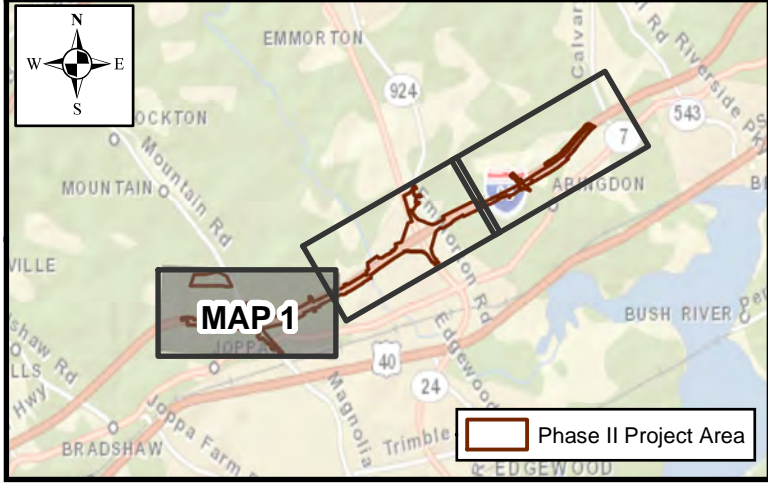


DATE: APRIL 2019





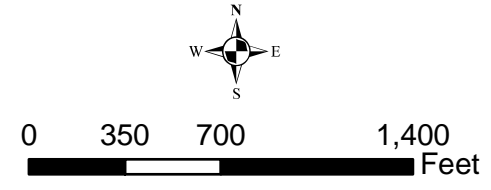
**I-95 ETL NORTHBOUND EXTENSION PHASE II  
FIGURE 4A - SOIL SURVEY MAP MAP 1**



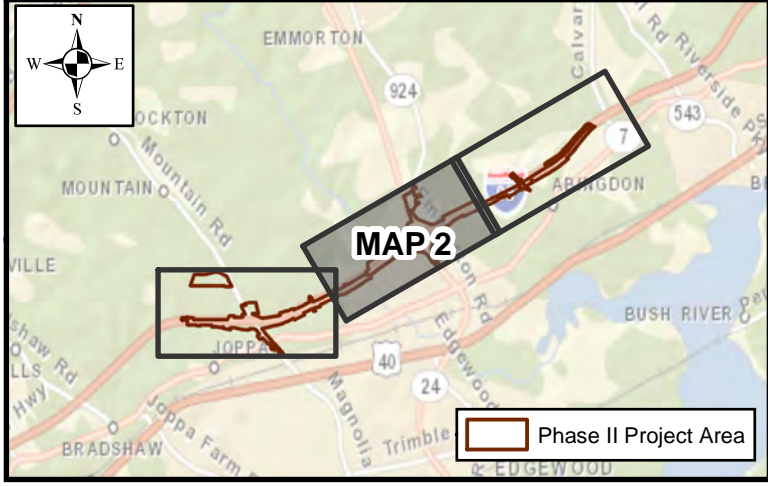
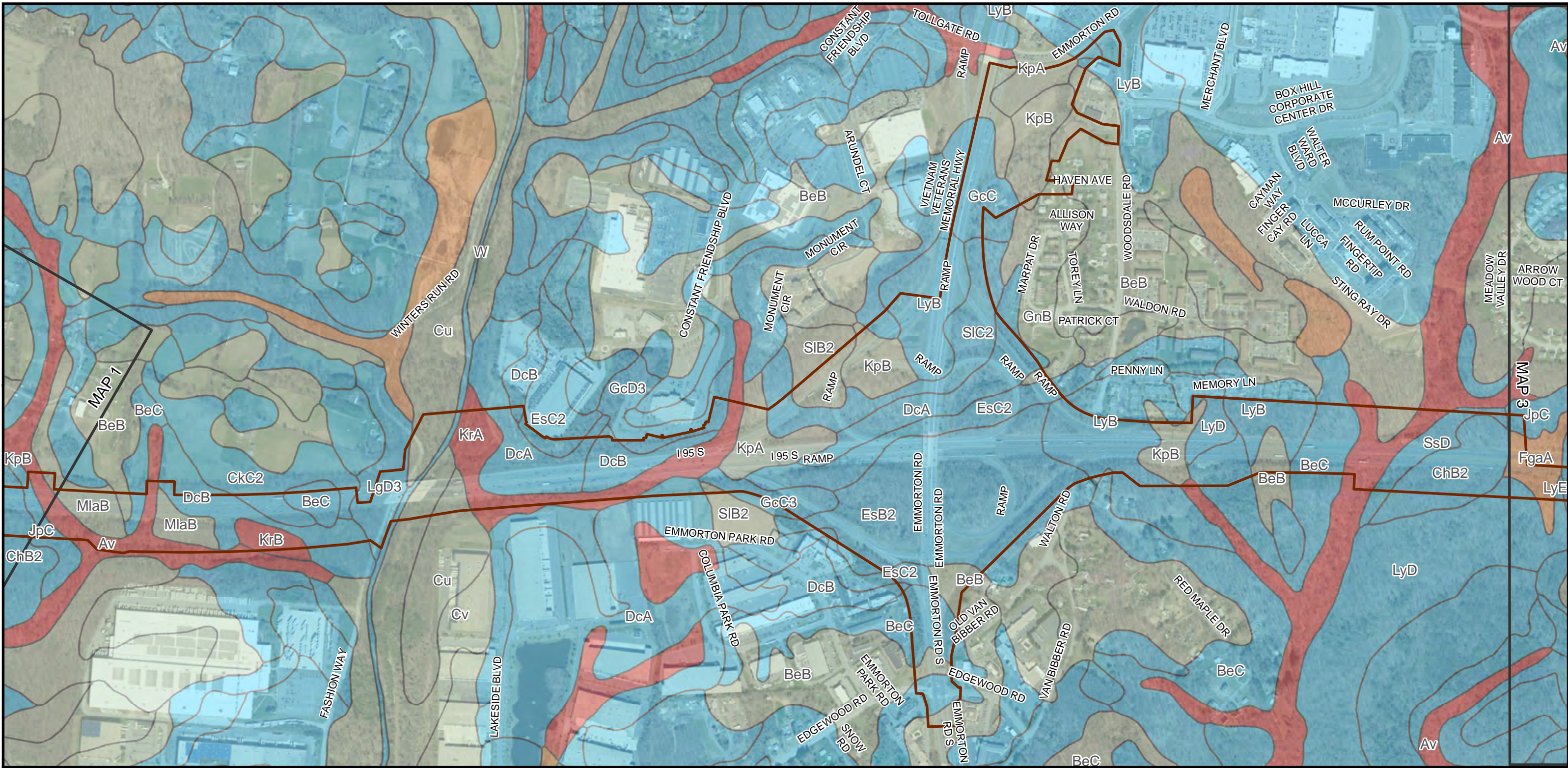
- Legend**
- Phase II Project Area
  - Matchline
- Soil Mapping Units**
- Not hydric (0%)
  - Predominantly non-hydric (1 - 32%)
  - Partially hydric (33 - 65%)
  - Predominantly hydric (66 - 99%)
  - Hydric (100%)



DATE: APRIL 2019



1" = 700'  
SOURCE: NRCS

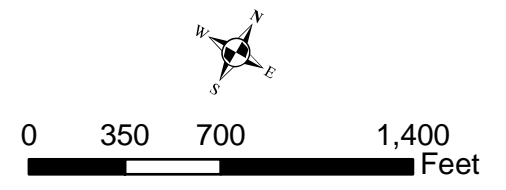


## I-95 ETL NORTHBOUND EXTENSION PHASE II FIGURE 4B - SOIL SURVEY MAP MAP 2

- Legend**
- Phase II Project Area
  - Matchline
  - Not hydric (0%)
  - Predominantly non-hydric (1 - 32%)
  - Partially hydric (33 - 65%)
  - Predominantly hydric (66 - 99%)
  - Hydric (100%)

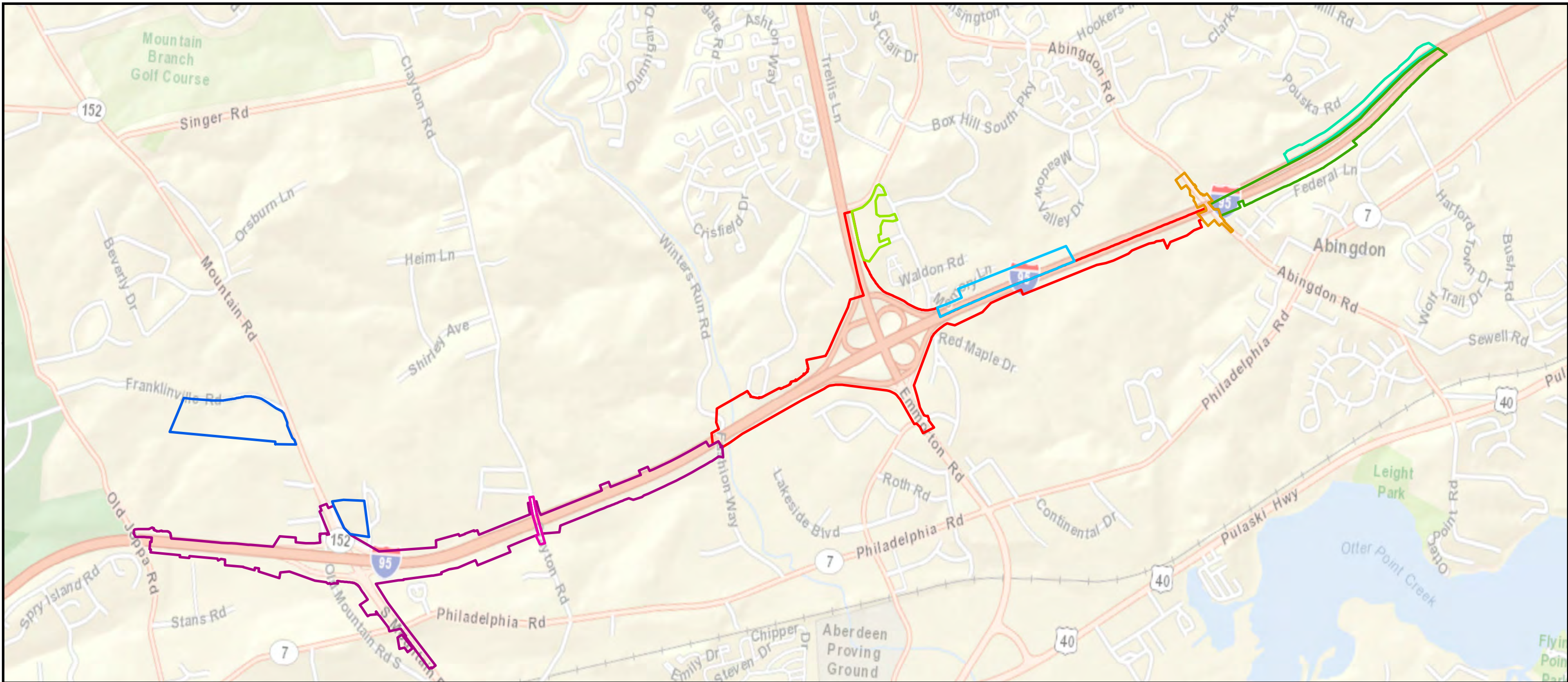


DATE: APRIL 2019





Soil Mapping Units					
Map Unit Symbol	Map Unit Name	Farm Class	Hydric Rating - Percent Present	K Factor - Whole Soil	Hydric Classification
AdB	Aldino silt loam, 3 to 8 percent slopes	Farmland of statewide importance	5	0.49	Predominantly non-hydric (1 - 32%)
Av	Alluvial land	Not prime farmland	100	0.43	Hydric (100%)
BeB	Beltsville silt loam, 2 to 5 percent slopes	Farmland of statewide importance	5	0.37	Predominantly non-hydric (1 - 32%)
BeC	Beltsville silt loam, 5 to 10 percent slopes	Farmland of statewide importance	0	0.43	Not hydric (0%)
CcB2	Chester silt loam, 3 to 8 percent slopes	All areas are prime farmland	0	0.32	Not hydric (0%)
CcC2	Chester silt loam, 8 to 15 percent slopes	Farmland of statewide importance	0	0.32	Not hydric (0%)
ChB2	Chillum silt loam, 2 to 5 percent slopes, moderately eroded	All areas are prime farmland	0	0.32	Not hydric (0%)
CkC2	Chillum-Neshaminy silt loams, 5 to 10 percent slopes, moderately eroded	Farmland of statewide importance	0	0.49	Not hydric (0%)
Cu	Codorus silt loam	Prime farmland if protected from flooding or not frequently flooded during the growing season	15	0.32	Predominantly non-hydric (1 - 32%)
DcA	Delanco silt loam, 0 to 3 percent slopes	All areas are prime farmland	0	0.37	Not hydric (0%)
DcB	Delanco silt loam, 3 to 8 percent slopes	All areas are prime farmland	0	0.37	Not hydric (0%)
En	Elkton silt loam	Not prime farmland	95	0.43	Predominantly hydric (66 - 99%)
EsB2	Elsinboro loam, 2 to 5 percent slopes, moderately eroded	All areas are prime farmland	0	0.49	Not hydric (0%)
EsC2	Elsinboro loam, 5 to 10 percent slopes, moderately eroded	Farmland of statewide importance	0	0.49	Not hydric (0%)
FgaA	, 0 to 2 percent slopes, Northern Coastal Plain	Farmland of statewide importance	85	NA	Predominantly hydric (66 - 99%)
GcB2	Glenelg loam, 3 to 8 percent slopes	All areas are prime farmland	0	0.24	Not hydric (0%)
GcC	Glenelg loam, 8 to 15 percent slopes	Farmland of statewide importance	0	0.24	Not hydric (0%)
GcC3	Glenelg loam, 8 to 15 percent slopes, severely eroded	Not prime farmland	0	0.32	Not hydric (0%)
GcD3	Glenelg loam, 15 to 25 percent slopes, severely eroded	Not prime farmland	0	0.32	Not hydric (0%)
GnB	Glenville silt loam, 3 to 8 percent slopes	All areas are prime farmland	10	0.37	Predominantly non-hydric (1 - 32%)
JpC	Joppa gravelly sandy loam, 5 to 10 percent slopes	Farmland of statewide importance	0	0.1	Not hydric (0%)
KpA	Keyport silt loam, 0 to 2 percent slopes	Farmland of statewide importance	5	0.49	Predominantly non-hydric (1 - 32%)
KpB	Keyport silt loam, 2 to 5 percent slopes	Farmland of statewide importance	5	0.49	Predominantly non-hydric (1 - 32%)
KrA	Kinkora silt loam, 0 to 3 percent slopes	Not prime farmland	100	0.43	Hydric (100%)
KrB	Kinkora silt loam, 3 to 8 percent slopes	Not prime farmland	100	0.43	Hydric (100%)
LgD3	Legore silty clay loam 15 to 25 percent slopes, severely eroded	Not prime farmland	0	0.37	Not hydric (0%)
Lr	Leonardtown silt loam	Not prime farmland	85	0.37	Predominantly hydric (66 - 99%)
LyB	Loamy and clayey land, 0 to 5 percent slopes	Not prime farmland	0	0.28	Not hydric (0%)
LyD	Loamy and clayey land, 5 to 15 percent slopes	Not prime farmland	0	0.28	Not hydric (0%)
LyE	Loamy and clayey land, 15 to 30 percent slopes	Not prime farmland	0	0.28	Not hydric (0%)
MlaB	Mattapex silt loam, 2 to 5 percent slopes, Northern Coastal Plain	All areas are prime farmland	5	0.49	Predominantly non-hydric (1 - 32%)
NeA	Neshaminy silt loam, 0 to 3 percent slopes	All areas are prime farmland	0	0.37	Not hydric (0%)
NeB2	Neshaminy silt loam, 3 to 8 percent slopes, moderately eroded	All areas are prime farmland	0	0.37	Not hydric (0%)
NeC2	Neshaminy silt loam, 8 to 15 percent slopes, moderately eroded	Farmland of statewide importance	0	0.37	Not hydric (0%)
Sa	Sand and gravel pits	Not prime farmland	0	NA	Not hydric (0%)
SIB2	Sassafras loam, 2 to 5 percent slopes	All areas are prime farmland	4	0.32	Predominantly non-hydric (1 - 32%)
SIC2	Sassafras loam, 5 to 10 percent slopes, moderately eroded	Farmland of statewide importance	0	0.32	Not hydric (0%)
SsD	Sassafras and Joppa soils, 10 to 15 percent slopes	Farmland of statewide importance	0	0.49	Not hydric (0%)
SsE	Sassafras and Joppa soils, 15 to 30 percent slopes	Not prime farmland	0	0.49	Not hydric (0%)
W	Water	NA	0	NA	Not hydric (0%)



**Legend**

- A. KH-3019: MD 152 Interchange / I-95 NB ETL Two-lane Extension / MD 152 Noise Wall
- B. KH-3022: Clayton Road Overpass Reconstruction
- C. KH-3021: MD 24 Interchange / Two-Lane ETL / Winters Run Bridge
- D. KH-3029: Abingdon Road Overpass
- E. KH-3027: MD 152 Park and Ride Facility Relocation
- F. KH-3023: MD 24/MD 924 Park & Ride
- G. KH-3020: I-95 NB ETL Extension to Bynum Run / Noise Wall on NB I-95 North of Abingdon Road
- H. KH-3031: Noise Wall on SB I-95 South of Calvary Road
- I. KH-3030: Noise Wall on SB I-95 at MD 24/Woodsdale

**I-95 ETL NORTHBOUND EXTENSION PHASE II  
FIGURE 5: CONTRACT STUDY AREA MAP**



DATE: APRIL 2019



0 1,000 2,000 4,000 Feet

1" = 2,000'

SOURCE: MD IMAP