

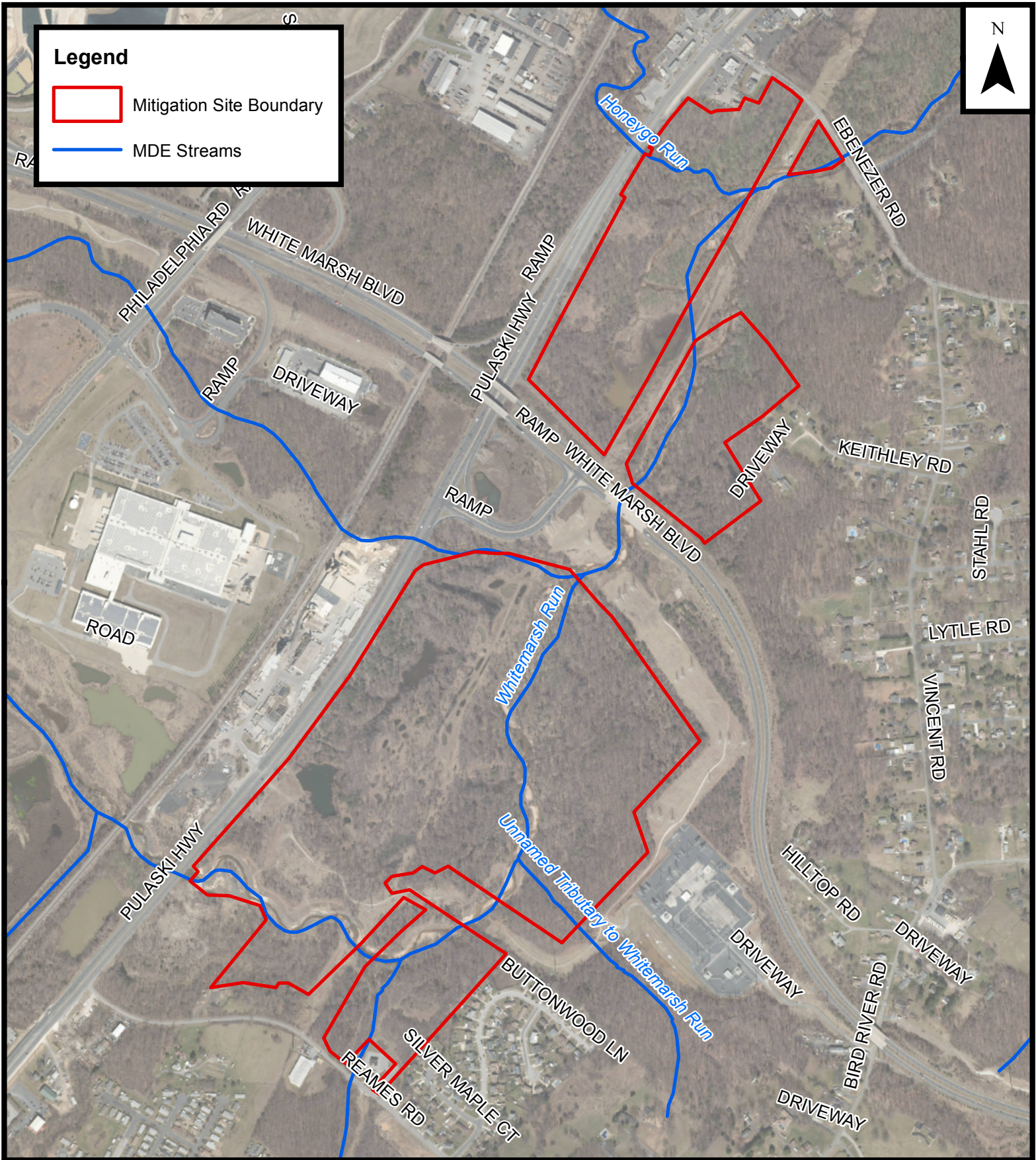
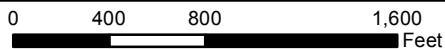


Legend

-  Mitigation Site Boundary
-  MDE Streams



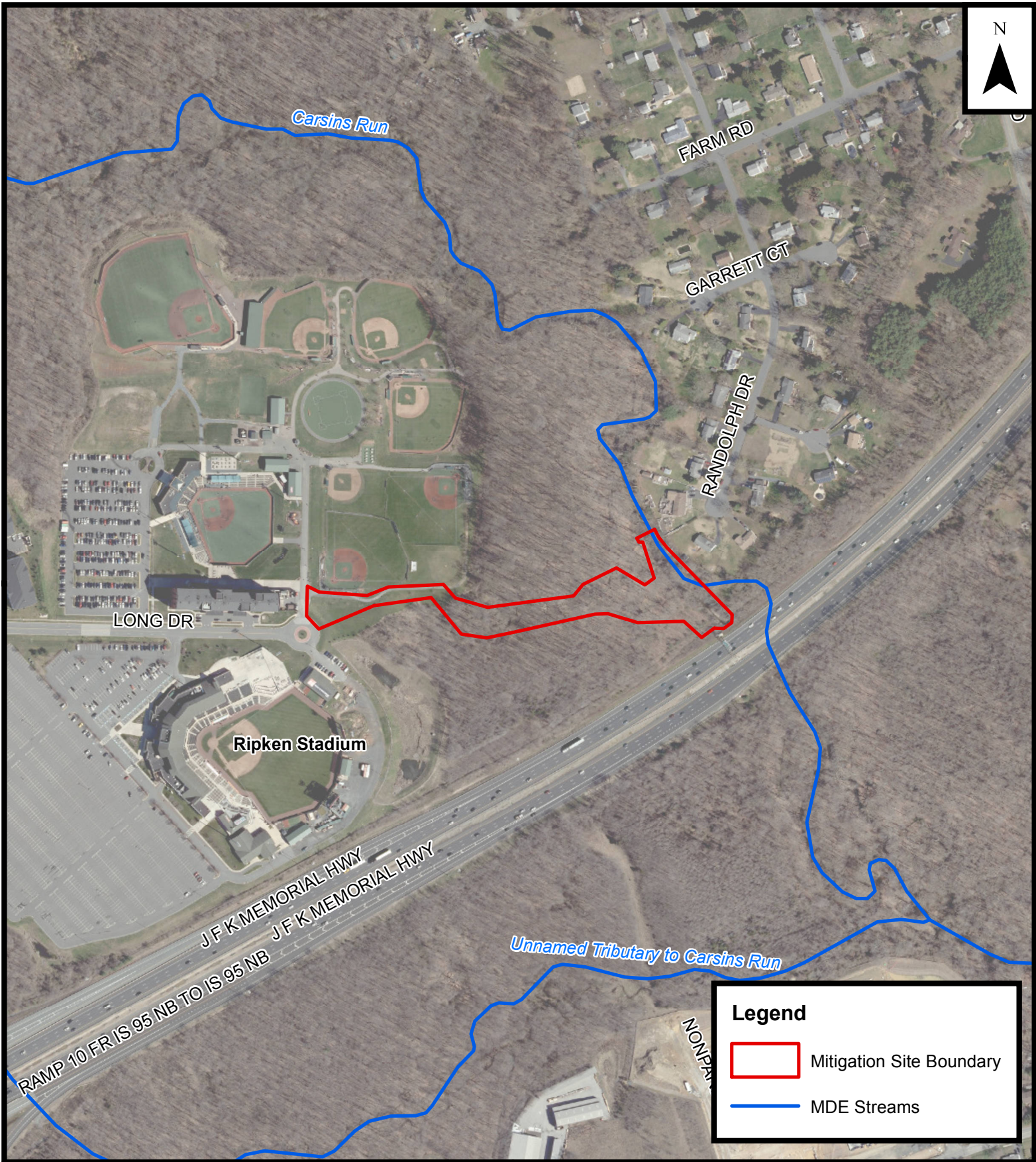
**FIGURE 5: WHITEMARSH RUN
MITIGATION SITE**
**I-95 ETL NORTHBOUND EXTENSION
HARFORD/BALTIMORE COUNTY, MARYLAND**



SOURCE: ESRI

DATE: MAY 2018

SCALE: 1" = 800'



**FIGURE 6: CARSINS RUN
MITIGATION SITE**

**I-95 ETL NORTHBOUND EXTENSION
HARFORD/BALTIMORE COUNTY, MARYLAND**

0 200 400 800 Feet

SOURCE: ESRI

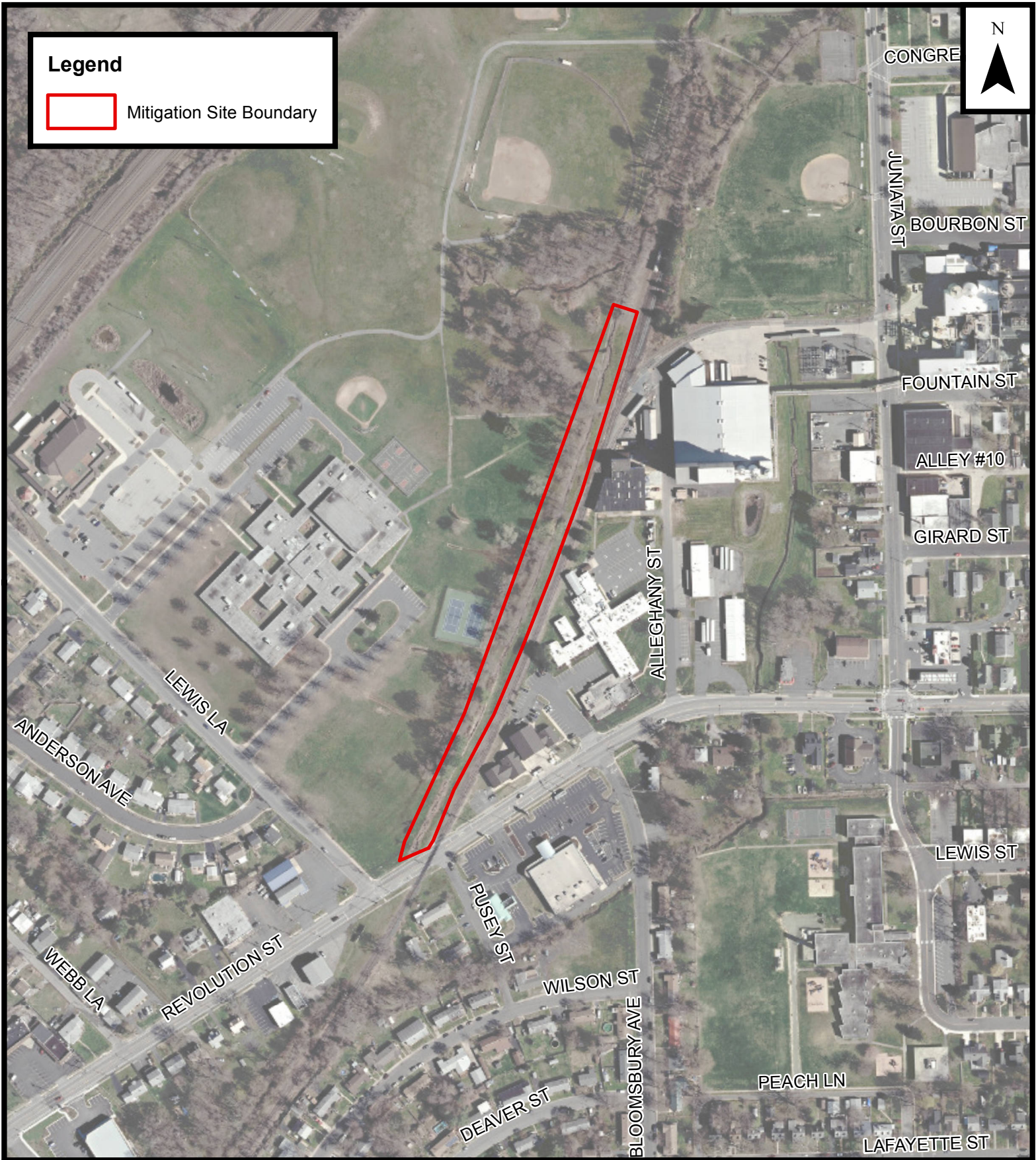
DATE: MAY 2018

SCALE: 1" = 400'



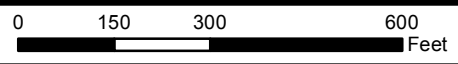
Legend

 Mitigation Site Boundary



**FIGURE 7: LILLY RUN
MITIGATION SITE**

**I-95 ETL NORTHBOUND EXTENSION
HARFORD/BALTIMORE COUNTY, MARYLAND**



SOURCE: ESRI

DATE: MAY 2018

SCALE: 1" = 300'

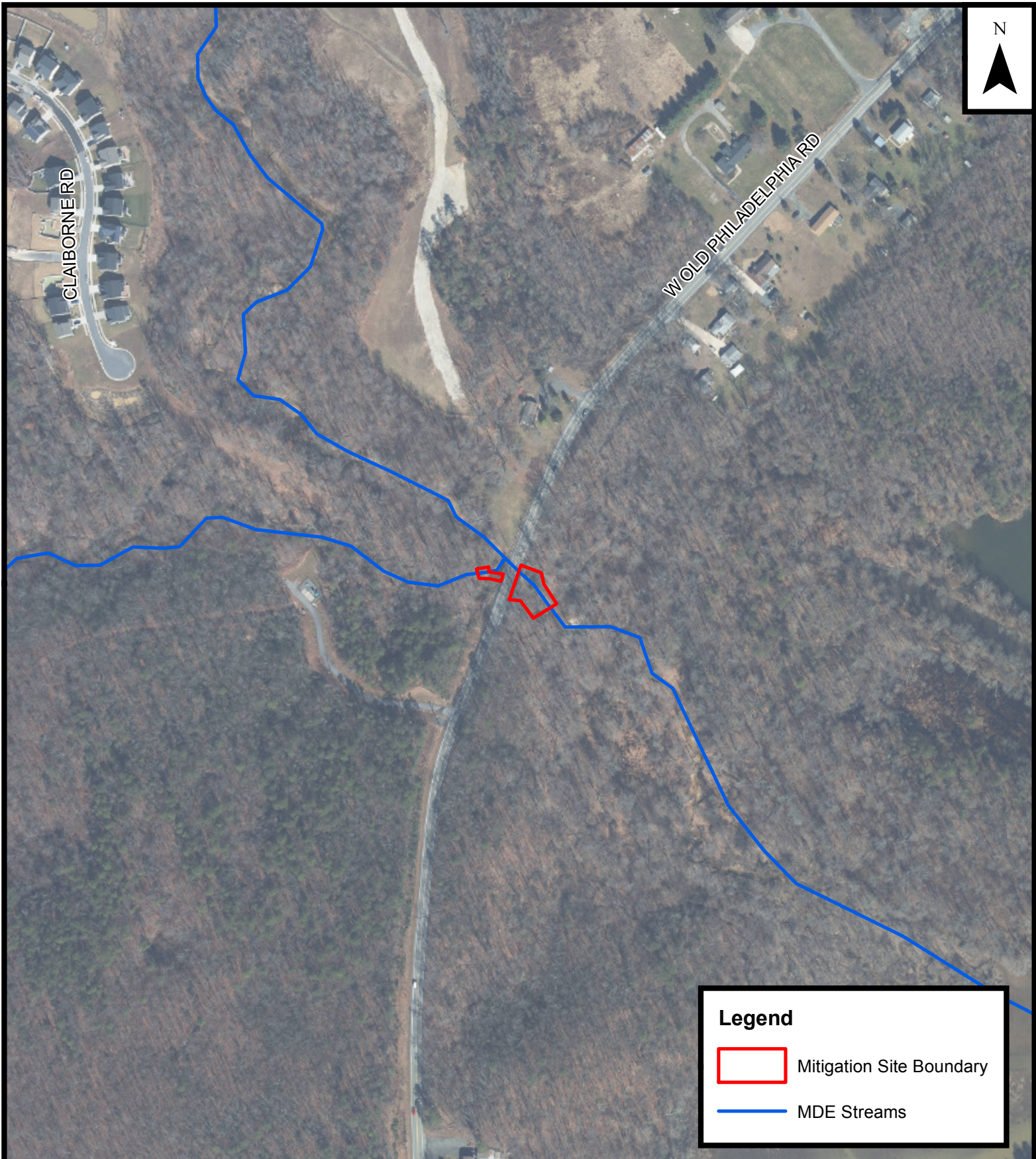


FIGURE 8: MD 7 IN CHARLESTOWN MITIGATION SITE

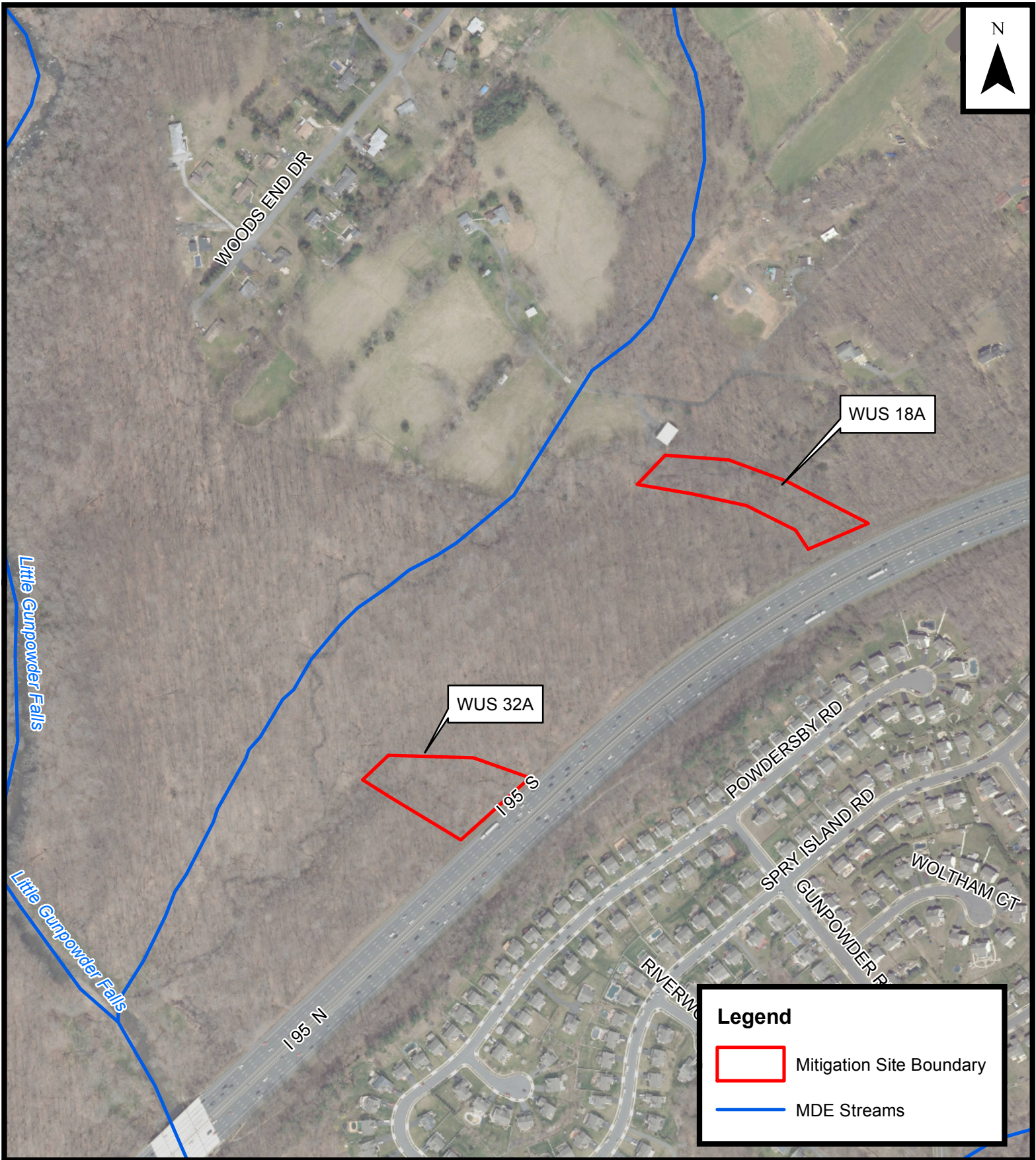
I-95 ETL NORTHBOUND EXTENSION
HARFORD/BALTIMORE COUNTY, MARYLAND

0 150 300 600 Feet

SOURCE: ESRI

DATE: MAY 2018

SCALE: 1" = 300'



Legend



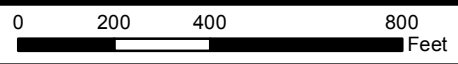
-  Mitigation Site Boundary
-  MDE Streams



FIGURE 9: WUS 18A AND WUS 32A MITIGATION SITES
I-95 ETL NORTHBOUND EXTENSION
HARFORD/BALTIMORE COUNTY, MARYLAND



SOURCE: ESRI

DATE: MAY 2018

SCALE: 1" = 400'