



## EXISTING TRAFFIC SUMMARIES

---

**Classification Count**

Location: William Preston Lane Bridge (Bay Bridge)  
 Direction: Eastbound  
 Date: Saturday, August 18, 2001

Beginning Hour	Heavy Vehicles										Total Heavy Vehicles	Total
	Motorcycles	Passenger Cars	Buses	Single Unit Trucks	WB40	WB50	WB60	Length > 66'				
0:00	0	766	6	34	9	27	8	1			79	851
01:00	0	405	12	14	6	32	5	1			58	475
02:00	0	340	7	20	7	23	3	1			54	401
03:00	0	277	20	26	11	26	7	2			72	369
04:00	2	303	22	35	14	38	7	1			95	422
05:00	1	626	30	63	13	29	11	2			118	775
06:00	3	1500	28	61	14	47	8	5			135	1666
07:00	3	2751	25	90	23	21	18	4			156	2935
08:00	6	3364	29	96	22	40	13	2			173	3572
09:00	5	3466	37	67	23	33	19	3			145	3653
10:00	8	3354	28	71	17	30	14	2			134	3524
11:00	11	3285	32	57	22	28	7	1			115	3443
12:00	6	3336	30	80	21	20	13	2			136	3508
13:00	5	2882	25	46	12	23	16	1			98	3010
14:00	6	2956	11	68	20	14	6	2			110	3083
15:00	9	3421	25	79	19	37	10	4			149	3604
16:00	14	3272	29	85	16	37	9	5			152	3467
17:00	6	1843	17	70	17	21	9	2			119	1985
18:00	3	2071	14	74	11	23	4	1			113	2201
19:00	2	1646	17	67	12	28	4	1			112	1777
20:00	1	1369	15	45	13	23	9	4			94	1479
21:00	0	1218	8	42	6	24	9	2			83	1309
22:00	1	981	3	23	5	15	3	1			47	1032
23:00	0	687	2	33	4	19	3	1			60	749
<b>Total:</b>	<b>92</b>	<b>46119</b>	<b>472</b>	<b>1346</b>	<b>337</b>	<b>658</b>	<b>215</b>	<b>51</b>			<b>2607</b>	<b>49290</b>
<b>Percentage:</b>	<b>0.20%</b>	<b>93.57%</b>	<b>0.96%</b>	<b>2.73%</b>	<b>0.68%</b>	<b>1.33%</b>	<b>0.44%</b>	<b>0.10%</b>			<b>5.29%</b>	

Total Motorcycles, Cars and Buses:	46683
Percentage Motorcycles, Cars and Buses:	94.71%

Total Heavy Vehicles:	2607
Percentage Heavy Vehicles:	5.29%

**Classification Count**

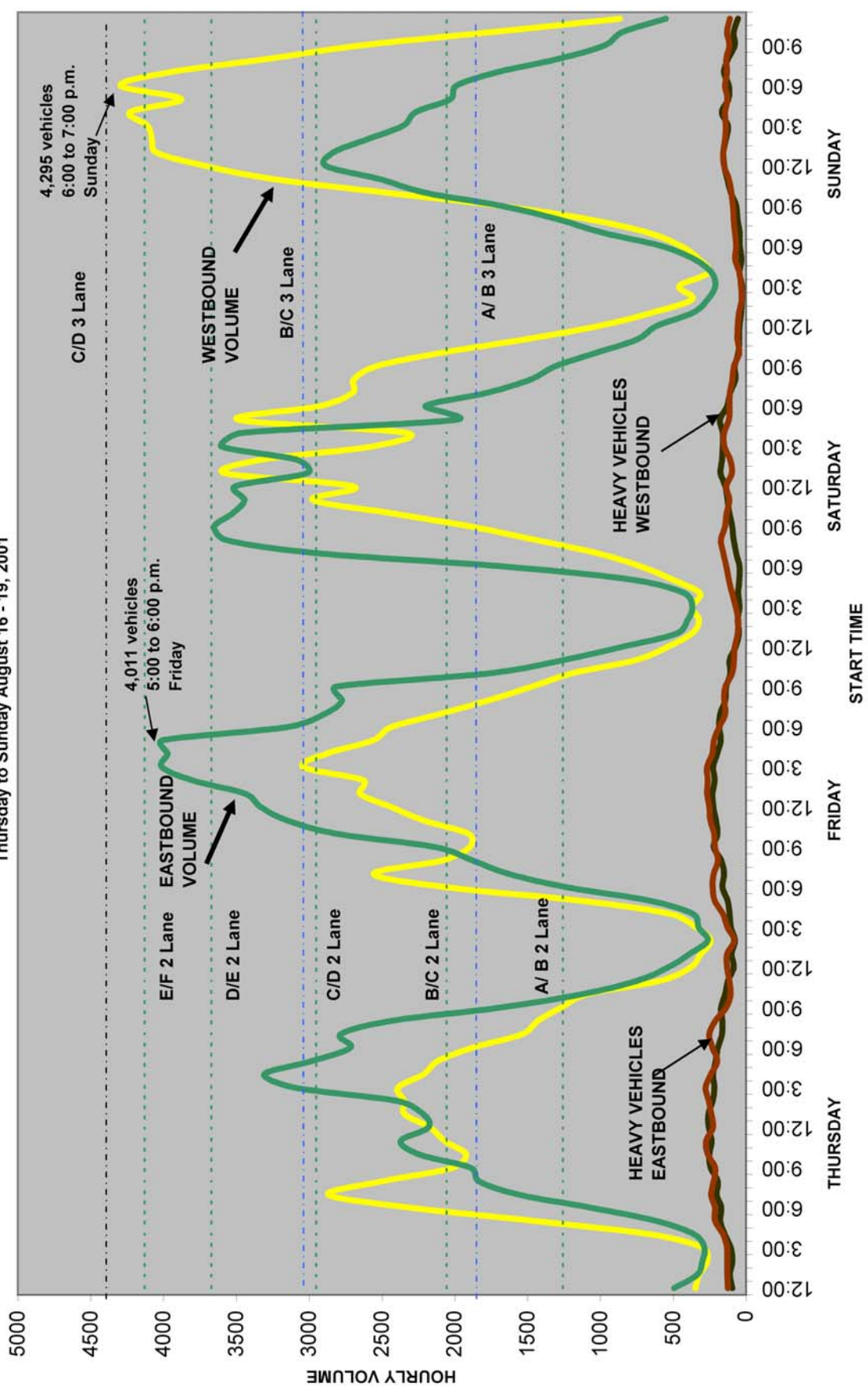
Location: William Preston Lane Bridge (Bay Bridge)  
 Direction: Westbound  
 Date: Saturday, August 18, 2001

Beginning Hour	Heavy Vehicles										Total Heavy Vehicles	Total
	Motorcycles	Passenger Cars	Buses	Single Unit Trucks	WB40	WB50	WB60	Length > 66'	Total Heavy Vehicles			
0:00	0	462	6	18	11	31	11	0	71	71	539	
01:00	0	319	4	10	9	20	9	0	49	49	372	
02:00	1	256	10	10	11	27	11	1	57	57	324	
03:00	0	319	7	10	6	19	6	1	46	46	372	
04:00	1	260	2	6	10	31	10	2	54	54	317	
05:00	0	450	4	17	5	18	5	2	47	47	501	
06:00	1	669	6	20	8	13	8	2	46	46	722	
07:00	1	942	9	15	14	19	14	2	67	67	1019	
08:00	2	1340	17	28	13	32	13	4	86	86	1445	
09:00	0	1765	26	30	16	28	16	4	96	96	1887	
10:00	4	2297	24	41	24	31	24	3	114	114	2439	
11:00	1	2803	47	59	35	24	35	2	127	127	2978	
12:00	5	2511	37	114	17	8	17	1	142	142	2695	
13:00	3	3355	51	138	26	5	26	1	176	176	3585	
14:00	4	3124	40	94	36	20	36	4	165	165	3333	
15:00	9	2352	44	127	21	7	21	1	160	160	2565	
16:00	6	2124	37	123	20	6	20	4	160	160	2327	
17:00	5	3238	65	117	32	19	32	1	180	180	3488	
18:00	4	2743	54	61	16	31	16	4	130	130	2931	
19:00	5	2546	42	50	13	31	13	1	110	110	2703	
20:00	2	2597	22	37	13	14	13	1	73	73	2694	
21:00	0	2446	17	41	10	23	10	1	78	78	2541	
22:00	2	2031	10	27	11	11	11	2	54	54	2097	
23:00	4	1462	9	20	6	15	6	1	47	47	1522	
<b>Total:</b>	<b>60</b>	<b>42411</b>	<b>590</b>	<b>1213</b>	<b>383</b>	<b>483</b>	<b>383</b>	<b>45</b>	<b>2335</b>	<b>2335</b>	<b>45396</b>	
<b>Percentage:</b>	<b>0.13%</b>	<b>93.42%</b>	<b>1.30%</b>	<b>2.67%</b>	<b>0.84%</b>	<b>1.06%</b>	<b>0.84%</b>	<b>0.10%</b>	<b>5.14%</b>	<b>5.14%</b>		

Total Motorcycles, Cars and Buses:	43061
Percentage Motorcycles, Cars and Buses:	94.86%

Total Heavy Vehicles:	2335
Percentage Heavy Vehicles:	5.14%

**FIGURE E-1**  
**HOURLY VOLUME COMPOSITE CHART - BAY BRIDGE**  
 Thursday to Sunday August 16 - 19, 2001



**Classification Count**

Location: William Preston Lane Bridge (Bay Bridge)  
 Direction: Eastbound  
 Date: Wednesday, October 17, 2001

Beginning Hour	Heavy Vehicles										Total Heavy Vehicles	Total
	Motorcycles	Passenger Cars	Buses	Single Unit Trucks	WB40	WB50	WB60	Length > 66'				
0:00	0	240	4	17	17	66	30	0	130		374	
01:00	0	96	2	15	7	46	27	0	95		193	
02:00	2	67	4	11	11	47	31	0	100		173	
03:00	2	69	2	18	15	56	28	2	119		192	
04:00	0	107	4	18	18	82	27	2	147		258	
05:00	1	248	12	39	21	83	28	2	173		434	
06:00	2	651	21	62	30	58	23	3	176		850	
07:00	0	1010	24	83	20	67	13	4	187		1221	
08:00	2	1183	31	85	21	62	21	0	189		1405	
09:00	0	1070	16	73	25	68	29	1	196		1282	
10:00	0	1124	25	78	34	81	25	3	221		1370	
11:00	0	1343	27	84	25	75	38	4	226		1596	
12:00	1	1310	12	82	31	62	39	7	221		1544	
13:00	3	1495	22	99	23	71	36	3	232		1752	
14:00	2	1556	23	75	28	73	29	6	211		1792	
15:00	3	1940	19	92	26	65	37	3	223		2185	
16:00	3	2350	24	99	19	78	24	2	222		2599	
17:00	0	2836	15	102	27	72	29	1	231		3082	
18:00	3	2864	23	125	30	81	54	1	291		3181	
19:00	2	1603	17	66	25	54	35	0	180		1802	
20:00	2	1247	17	66	20	70	34	2	192		1458	
21:00	1	938	9	38	8	53	29	2	130		1078	
22:00	2	672	10	45	6	52	23	5	131		815	
23:00	0	410	11	41	7	43	35	4	130		551	
<b>Total:</b>	<b>31</b>	<b>26429</b>	<b>374</b>	<b>1513</b>	<b>494</b>	<b>1565</b>	<b>724</b>	<b>57</b>	<b>4353</b>		<b>31187</b>	
<b>Percentage:</b>	<b>0.10%</b>	<b>84.74%</b>	<b>1.20%</b>	<b>4.85%</b>	<b>1.58%</b>	<b>5.02%</b>	<b>2.32%</b>	<b>0.18%</b>	<b>13.96%</b>			

Total Motorcycles, Cars and Buses:	26834
Percentage Motorcycles, Cars and Buses:	86.04%

Total Heavy Vehicles:	4353
Percentage Heavy Vehicles:	13.96%

**Classification Count**

Location: William Preston Lane Bridge (Bay Bridge)  
 Direction: Westbound  
 Date: Wednesday, October 17, 2001

Beginning Hour	Heavy Vehicles										Total
	Motorcycles	Passenger Cars	Buses	Single Unit Trucks	WB40	WB50	WB60	Length > 66'	Total Heavy Vehicles		
0:00	0	106	4	9	11	57	24	1	102	212	
01:00	1	96	3	8	6	47	12	1	74	174	
02:00	0	85	5	8	15	56	8	1	88	178	
03:00	2	149	3	25	16	47	10	3	101	255	
04:00	1	382	3	36	13	52	14	4	119	505	
05:00	4	1207	22	59	17	58	16	7	157	1390	
06:00	1	2267	14	86	26	45	15	6	178	2460	
07:00	1	2727	9	70	24	41	14	5	154	2891	
08:00	0	2290	18	93	30	59	12	3	197	2505	
09:00	4	1535	9	86	29	87	29	2	233	1781	
10:00	1	1332	19	61	33	90	35	0	219	1571	
11:00	2	1249	17	72	29	107	28	1	237	1505	
12:00	2	1211	6	60	34	102	32	2	230	1449	
13:00	5	1365	18	73	21	95	31	5	225	1613	
14:00	1	1484	23	73	28	80	23	4	208	1716	
15:00	0	1517	23	69	30	90	29	3	221	1761	
16:00	0	1485	19	63	26	74	29	2	194	1698	
17:00	2	1395	19	60	18	55	20	7	160	1576	
18:00	1	1146	11	63	14	74	19	1	171	1329	
19:00	2	818	11	39	12	69	31	2	153	984	
20:00	0	613	6	29	10	74	24	5	142	761	
21:00	1	483	5	29	14	72	41	4	160	649	
22:00	0	314	1	12	8	59	32	3	114	429	
23:00	0	198	5	19	12	68	20	0	119	322	
<b>Total:</b>	<b>31</b>	<b>25454</b>	<b>273</b>	<b>1202</b>	<b>476</b>	<b>1658</b>	<b>548</b>	<b>72</b>	<b>3956</b>	<b>29714</b>	
<b>Percentage:</b>	<b>0.10%</b>	<b>85.66%</b>	<b>0.92%</b>	<b>4.05%</b>	<b>1.60%</b>	<b>5.58%</b>	<b>1.84%</b>	<b>0.24%</b>	<b>13.31%</b>		

Total Motorcycles, Cars and Buses:	25758
Percentage Motorcycles, Cars and Buses:	86.69%

Total Heavy Vehicles:	3956
Percentage Heavy Vehicles:	13.31%

**FIGURE E-2**  
**HOURLY VOLUME COMPOSITE CHART - BAY BRIDGE**  
 Tuesday to Wednesday October 16 - 17, 2001

