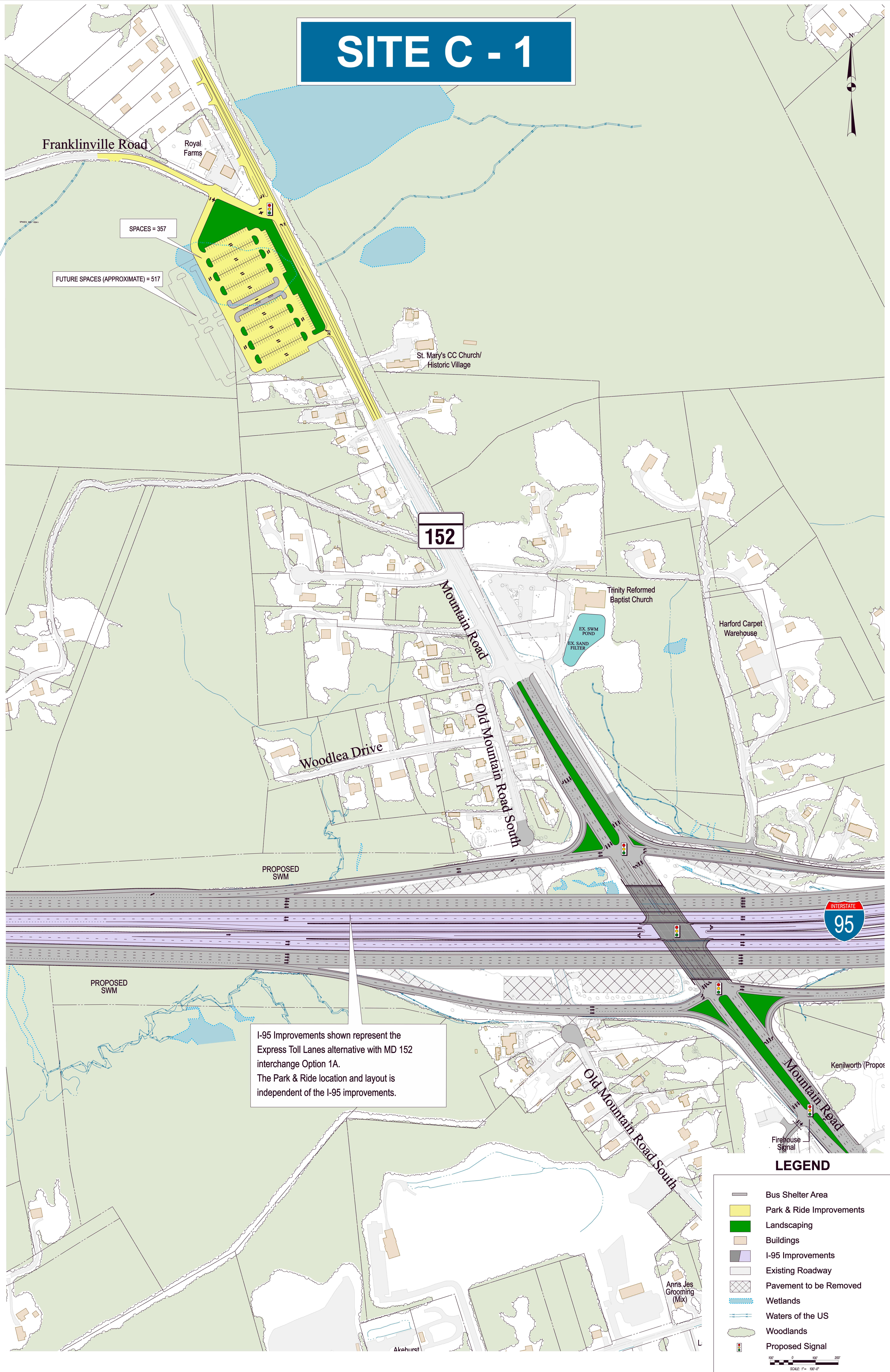


# SITE C - 1



SPACES = 357  
 FUTURE SPACES (APPROXIMATE) = 517

I-95 Improvements shown represent the Express Toll Lanes alternative with MD 152 interchange Option 1A. The Park & Ride location and layout is independent of the I-95 improvements.

### LEGEND

- Bus Shelter Area
- Park & Ride Improvements
- Landscaping
- Buildings
- I-95 Improvements
- Existing Roadway
- Pavement to be Removed
- Wetlands
- Waters of the US
- Woodlands
- Proposed Signal

SCALE: 1" = 100'-0"

