

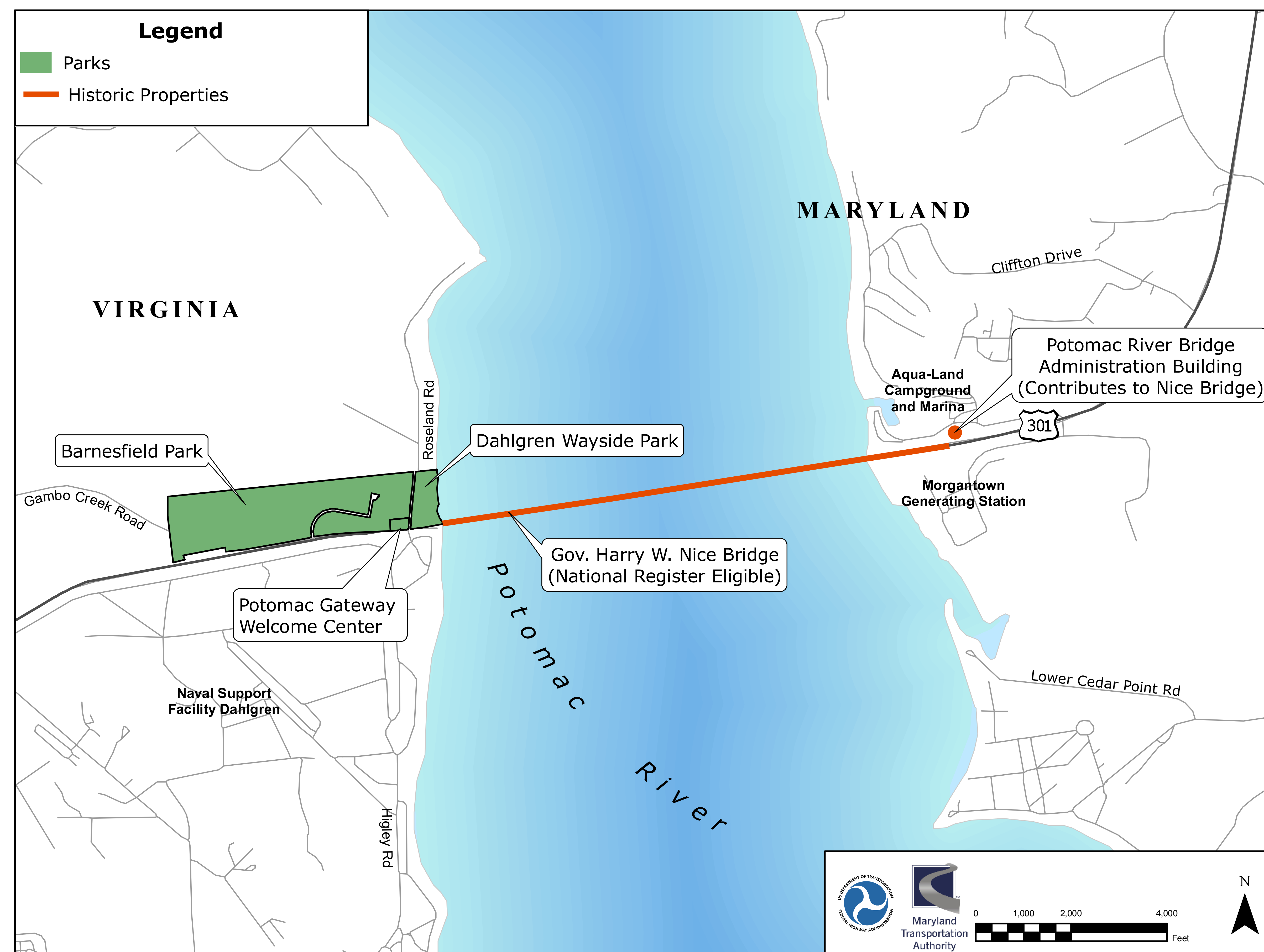
SECTION 4(f) – PROTECTION FOR PUBLIC PARKS & HISTORIC SITES

What is Section 4(f)?

Section 4(f) of the Department of Transportation Act of 1966 protects publicly owned parks and recreation areas, waterfowl and wildlife refuges, and historic sites.

Use of these lands for Federal transportation purposes may not be approved unless there is no feasible and prudent alternative to the use of Section 4(f) land; and the project includes all possible planning to minimize harm.

What are the Section 4(f) resources within the project area?



Impacts to Section 4(f) Resources

	Alternate 1	Alternate 2	Alternate 3	Alternate 4	Alternate 5	Alternate 6	Alternate 7
Section 4(f) Resource Avoidance?	No	No	No	No	No	No	No
Impact to historic Nice Bridge?	Initially, No; Long-term, Yes	Initially, No; Long-term, Yes	Yes	Initially, No; Long-term, Yes	Yes	Yes	Yes
Impact to Potomac River Bridge Administration Building?	No	Yes: 0.1 acre	Yes: 0.1 acre	Yes: 0.5 acre, demolition	Yes: 0.5 acre, demolition	Yes: 0.1 acre	Yes: 0.5 acre, demolition
Impact to Barnesfield Park	No	No	No	Yes: 0.4 acres	Yes: 0.4 acres	No	Yes: 2.2 acres
Impact to Dahlgren Wayside Park	No	No	No	Yes: 1.4 acres	Yes: 1.4 acres	No	Yes: 2.2 acres
Impact to Potomac Gateway Welcome Center	No	No	No	Yes: 2.1 acres	Yes: 2.1 acres	No	Yes: 2.1 acres
Likely pursue Section 4(f) <i>de minimis</i> finding?	No	No	No	Yes: Barnesfield Park	Yes: Barnesfield Park	No	Yes: Barnesfield Park

What is a *de minimis* impact finding?

FHWA can make a *de minimis* finding when they determine that the use of the Section 4(f) is so minimal the protected resource will not be adversely affected. A *de minimis* finding will likely be pursued for Barnesfield Park because the project would not affect any park facilities.

What Section 4(f) coordination is occurring?

The project team is working with Federal, State and local agency partners to address and resolve Section 4(f) issues. If appropriate, mitigation measures would be developed. Mitigation opportunities could include parkland replacement, enhancing existing parkland, or providing park amenities and facilities.