



100 years

is how long the new bridge is designed to last



18 million lbs.

of structural and reinforcing steel were used to build the new bridge – the equivalent weight of 5,100 midsized cars



65,000 cu. yd.

of concrete was produced at the on-site batch plant – keeping 5,000 large mixing trucks off the roads



100 acres

newly seeded oyster beds



82 vessels

were used in the Potomac River, including 75 floating barges – many of which were the size of a football field

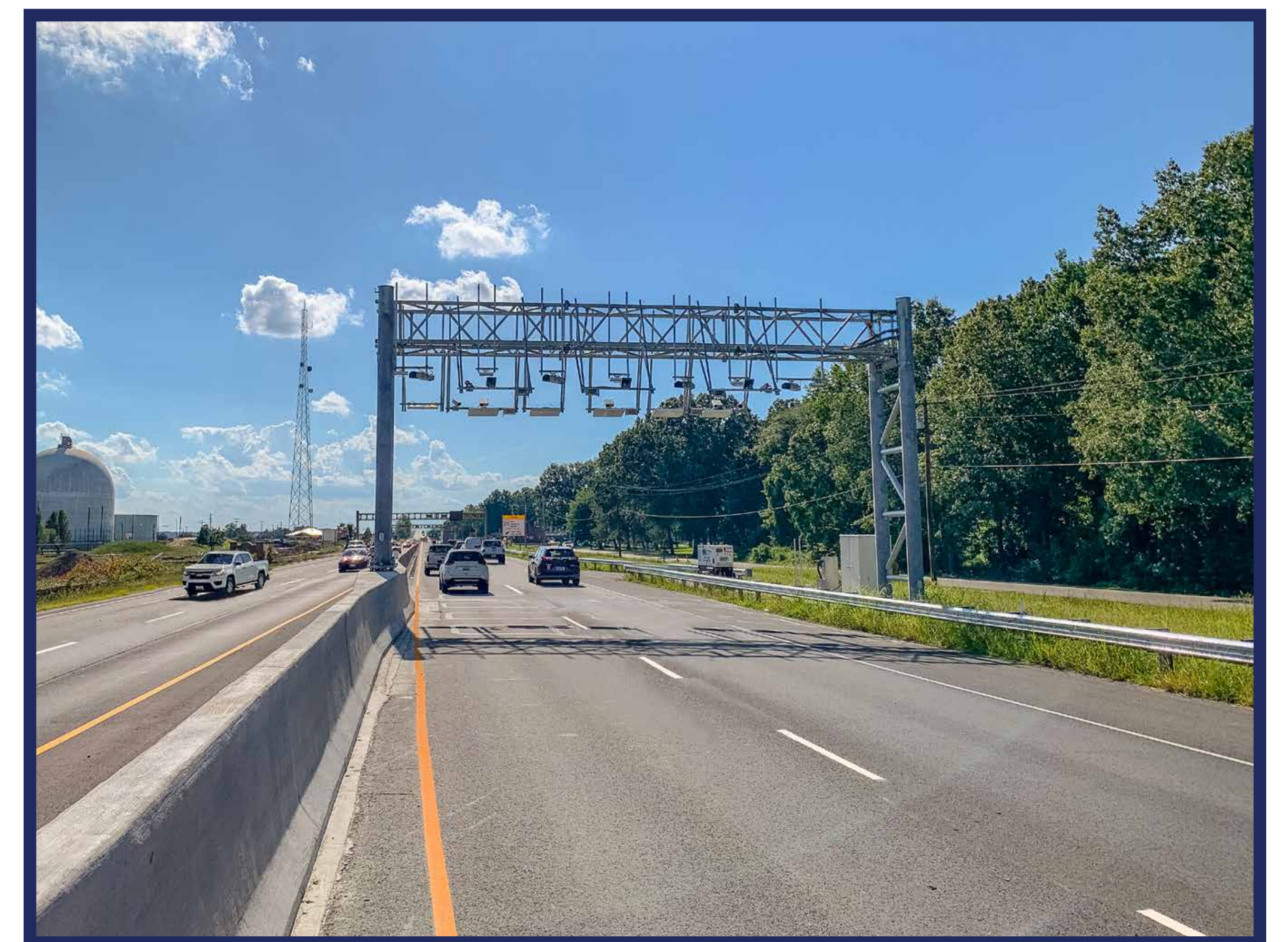


845 piles

were driven, ranging in length from 94 to 210 feet. If laid end-to-end, they would reach from the Project to Waldorf, Maryland

ALL-ELECTRONIC TOLLING

- The new Governor Harry W. Nice Memorial/Senator Thomas “Mac” Middleton Bridge is now all-electronic (cashless)
- Motorists pay tolls via *E-ZPass*, Pay-by-Plate, or Video Tolling
- Visit [DriveEzMD.com](https://www.driveezmd.com) for a list of locations to purchase an *E-ZPass*
- Benefits of all-electronic tolling:
 - Save up to 77% with Maryland *E-ZPass*
 - Free transponders and no monthly fees
 - Less idle time results in better fuel efficiency and savings at the pump
 - Faster commutes with less congestion and increased reliability
 - Increased safety and fewer crashes



Building the Bridge

◀◀◀ Then and Now ▶▶▶



Construction crew, 1939



Construction crew, 2022

Building the Bridge

◀◀◀ Then and Now ▶▶▶



Pier concrete footings, 1939



Pier concrete footings, 2021

Building the Bridge

◀◀◀ Then and Now ▶▶▶



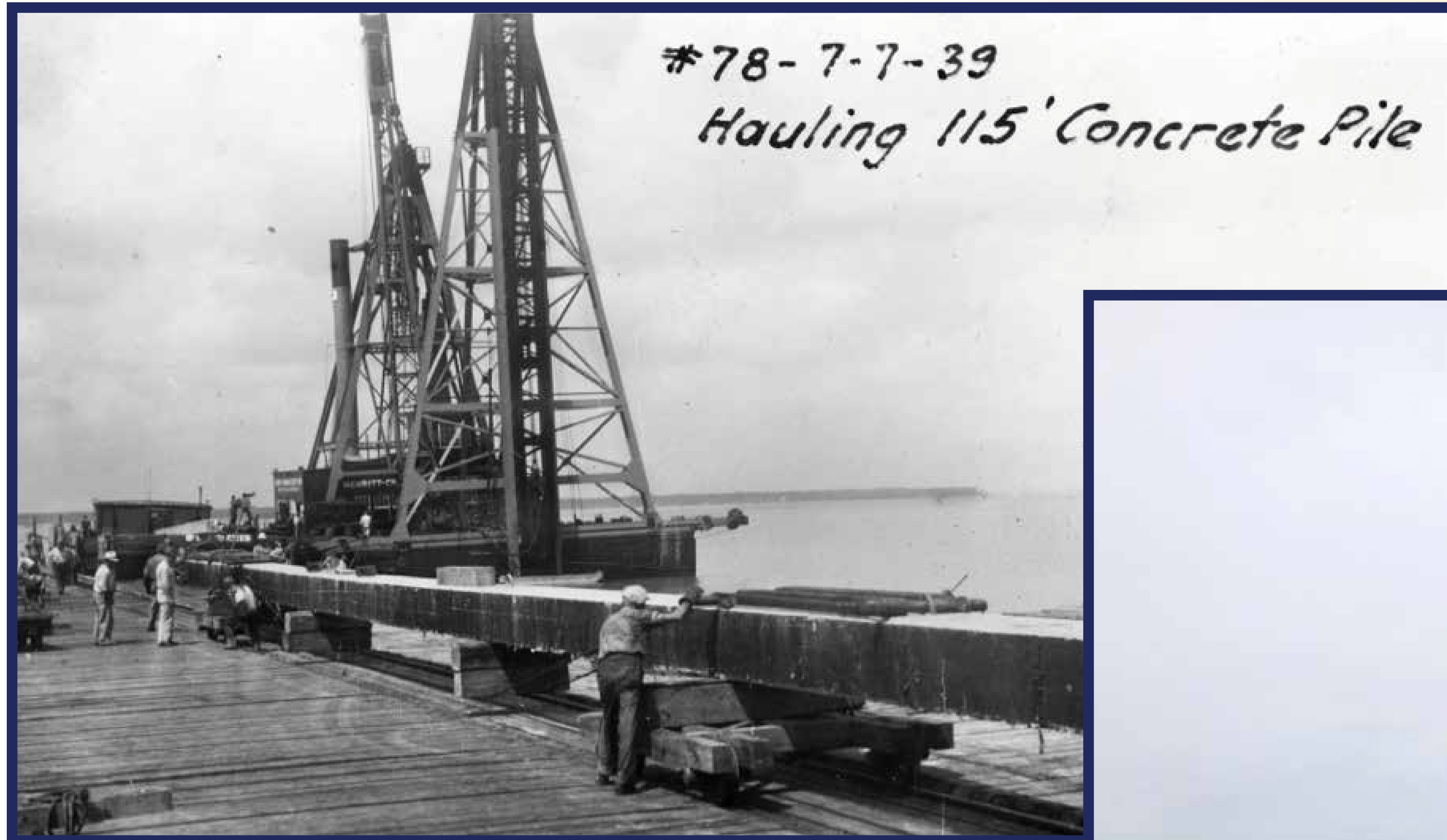
Maryland bridge abutment work, 1939



Maryland bridge abutment work, 2021

Building the Bridge

◀◀◀ Then and Now ▶▶▶



Bridge piles, 1939



Bridge piles, 2020

Building the Bridge

◀◀◀ Then and Now ▶▶▶



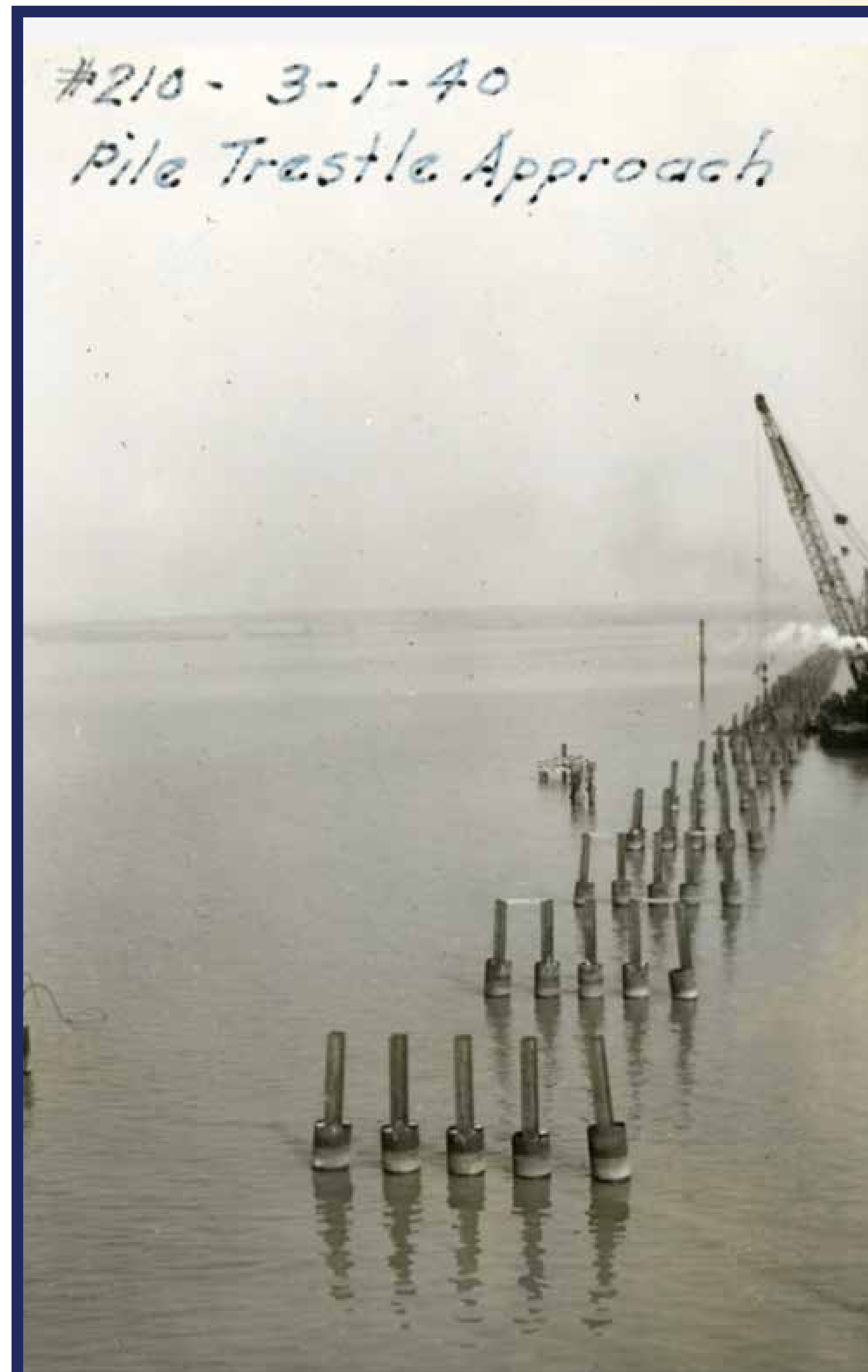
Form and footing placements, 1940



Form and footing placements, 2021

Building the Bridge

◀◀◀ Then and Now ▶▶▶



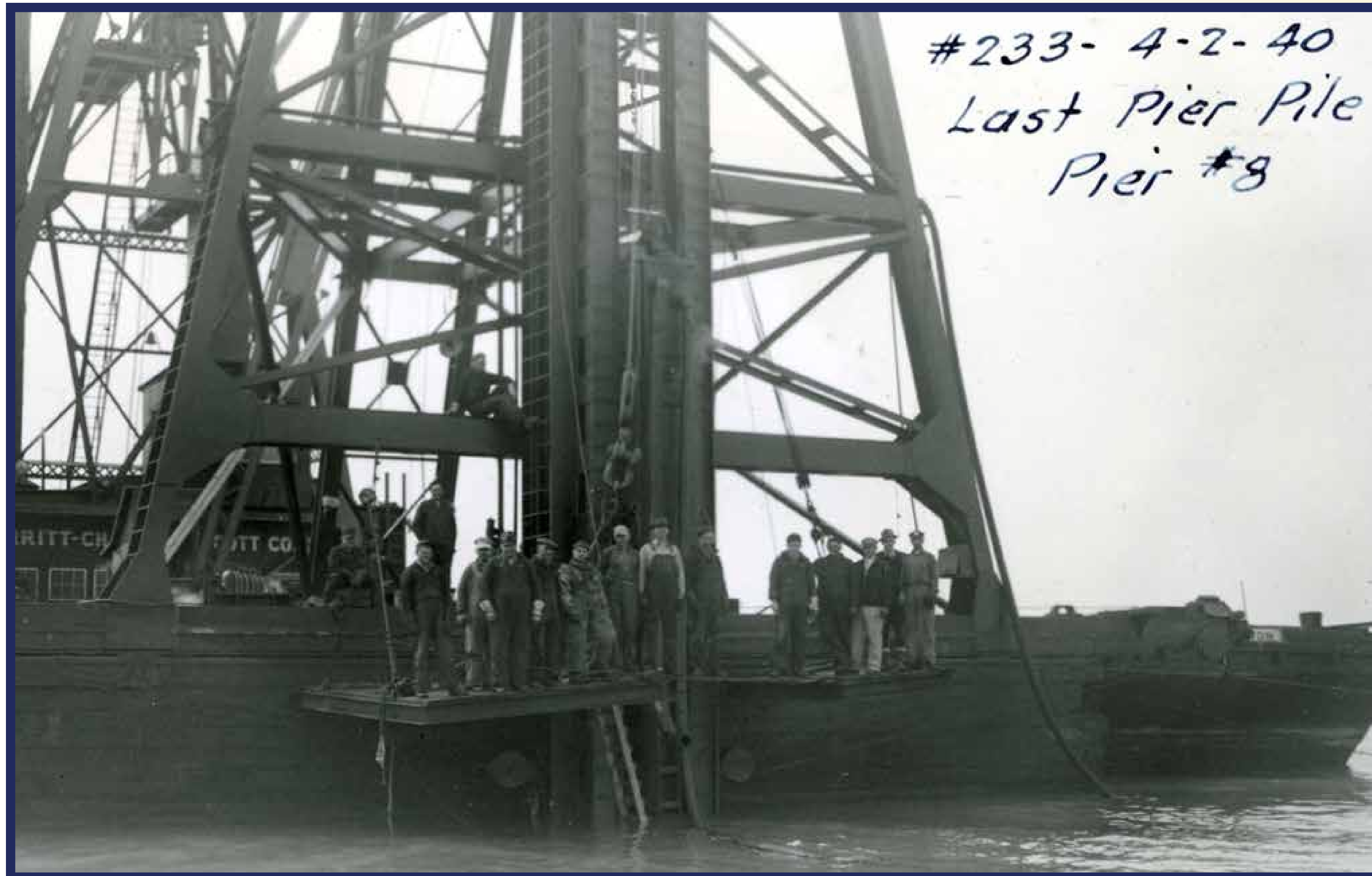
*Approaches taking
shape, 1940*



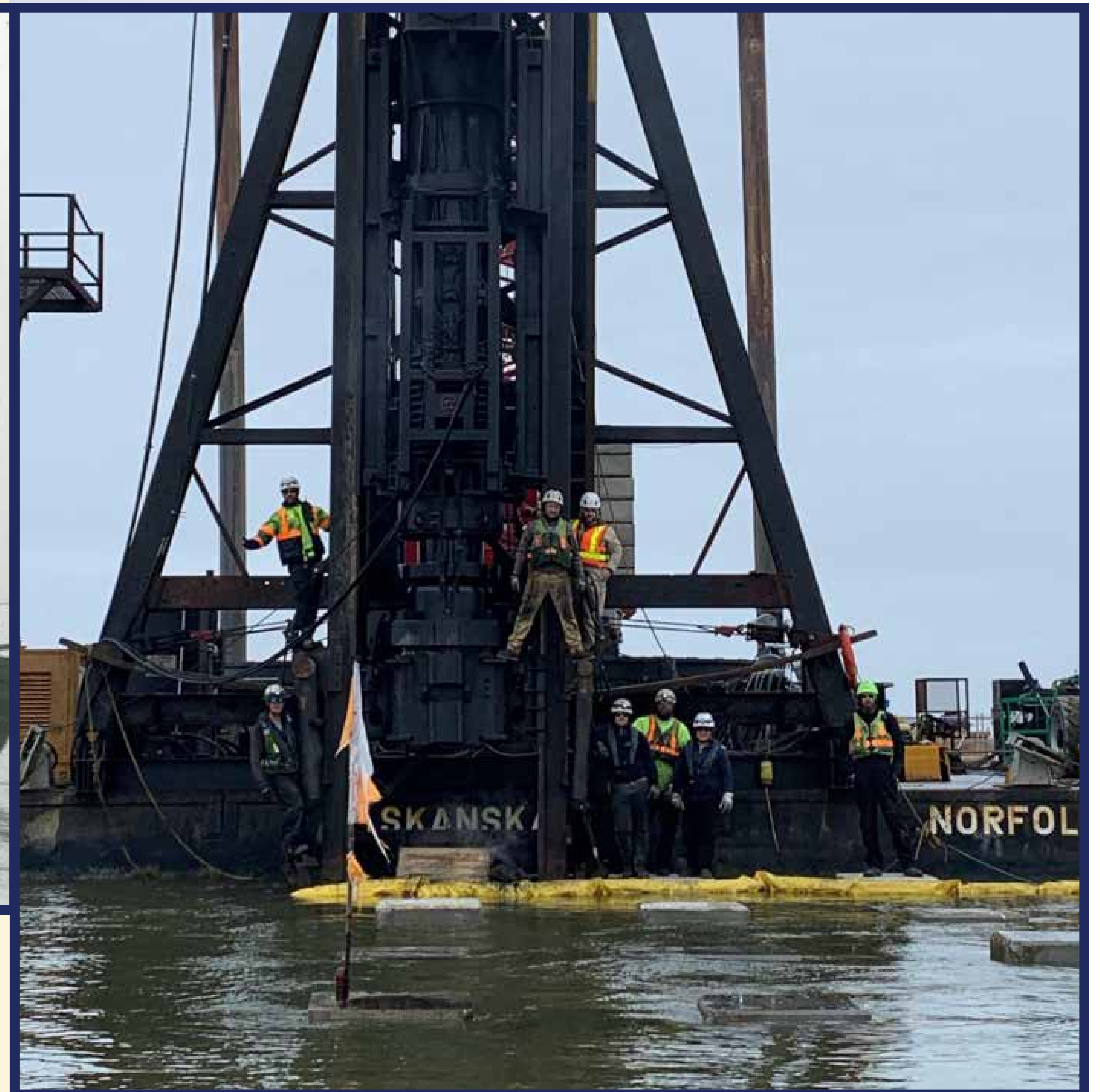
*Approaches taking
shape, 2022*

Building the Bridge

◀◀◀ Then and Now ▶▶▶



Last pile driven, 1940



Last pile driven, 2021

Building the Bridge

◀◀◀ Then and Now ▶▶▶



Steel erection, 1940



Steel erection, 2021

Building the Bridge

◀◀◀ Then and Now ▶▶▶



Paving approach, 1940



First deck pour, 2021

Building the Bridge

◀◀◀ Then and Now ▶▶▶



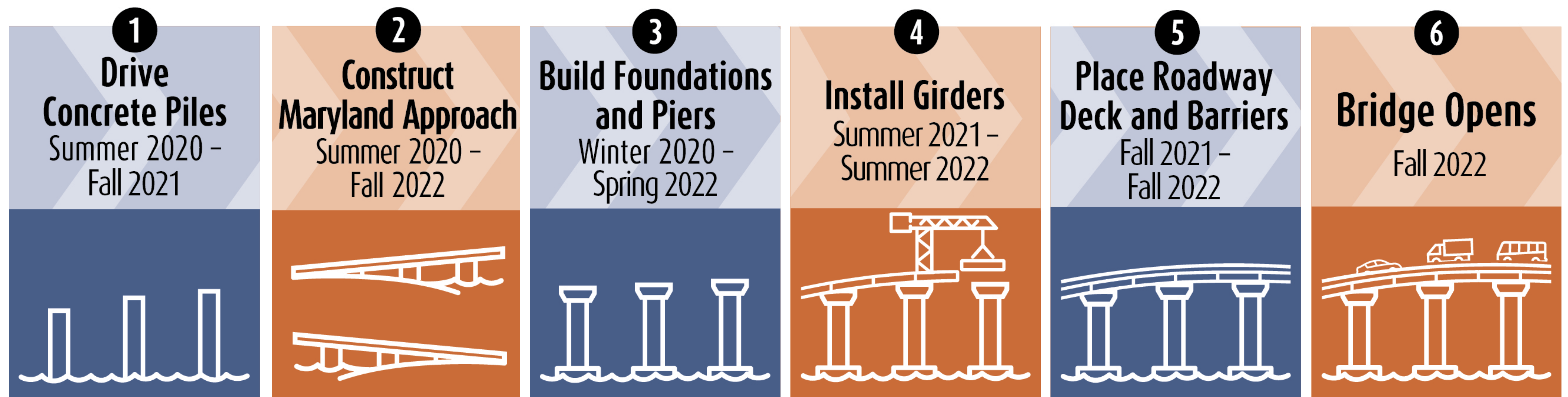
Original Maryland toll plaza, 1940



New overhead gantry for all-electronic tolling, 2022

CONSTRUCTION TIMELINE

- Opening almost three months **ahead of schedule and on budget**
- We built the wider, safer, better new bridge fast and with high-quality construction



**NEW NICE
MIDDLETON
BRIDGE**



September 2020



January 2021



June 2021



November 2021



May 2022



August 2022

*Please note: All photos were taken from drone video and are not high resolution.
Views are from the Maryland shore looking to Virginia.*